

HIDEAWAY

Designed by Wishwell for RK
www.robertkaufman.com

Featuring **TOPIA**
Wishwell
fabric for daydreamers



Finished quilt measures: 42" x 46"


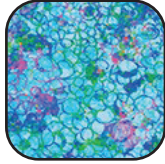



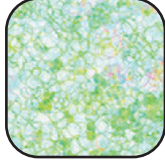

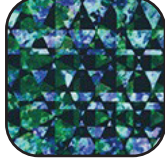


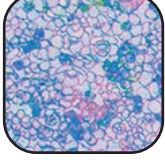

Difficulty Rating: **Advanced**

ROBERTKAUFMAN
F A B R I C S

For questions about this pattern, please email Patterns@RobertKaufman.com.

Fabric and Supplies Needed

Fabric amounts based on yardage that is 42" wide.

Color	Fabric	Name/SKU	Yardage	Color	Fabric	Name/SKU	Yardage
	A	WELD-19619-63 SKY	7/8 yard		G	WELD-19530-405 WATERFALL	1/4 yard
	B	WELD-19529-213 TEAL	1/4 yard		H	WELD-19531-17 IRIS	1/4 yard
	C	WELD-19526-286 WILD	1-1/3 yard		I	WELD-19530-43 LEAF	3/8 yard
	D	WELD-19528-235 HYACINTH	1/8 yard		J	WELD-19531-44 FOREST	1/4 yard
	E	WELD-19529-45 MOSS	1/3 yard		K	WELD-19531-63 SKY	1/3 yard
	F	WELD-19530-19 ORCHID	1/3 yard		Binding	WELD- 19525-286 WILD	3/8 yard
<p>Copyright 2020, Robert Kaufman For individual use only - Not for resale</p>				<p>You will also need: 3 yards for backing Paper backed fusible web (such as Heat N Bond) 3 yards</p>			

Notes Before You Begin

- Read through all of the instructions before beginning.
- All of the seam allowances are 1/4" unless otherwise noted.
- Press seam allowances open unless otherwise noted.
- Width of fabric (WOF) is equal to at least 42" wide.
- Right sides together has been abbreviated to RST.
- Remember to measure twice and cut once!

Cutting Instructions

From Fabric A, cut:

one 28-1/2" x 32-1/2" rectangle for the center panel



From Fabric B, cut:

four 1-1/2" x WOF strips. Subcut:

two 1-1/2" x 32-1/2" side
inner borders

two 1-1/2" x 30-1/2" top/bottom
inner borders

one of Piece 10

one of Piece 14

one of Piece 15

one of Piece 19

one of Piece 20

one of Piece 24

one of Piece 54



From Fabric C, fussy cut:

four 6-1/2" x LOE strips. Set aside for the outer borders.

From Fabric D, cut:

one of Piece 12
one of Piece 17
one of Piece 22
one of Piece 64
one of Piece 65
one of Piece 66



From Fabric E, cut:

one of Piece 2
one of Piece 6
one of Piece 9
one of Piece 40
one of Piece 41
one of Piece 55
one of Piece 59
one of Piece 60



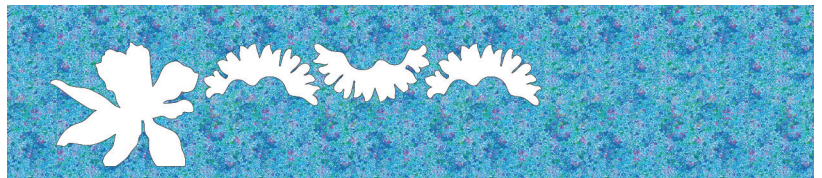
From Fabric F, cut:

one each of Pieces 25-27 and 29-38
one of Piece 44



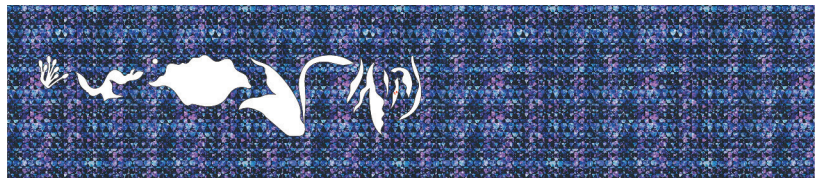
From Fabric G, cut:

one of Piece 11
one of Piece 16
one of Piece 21
one of Piece 61



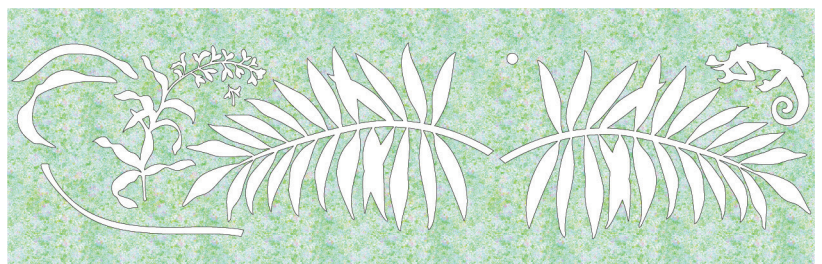
From Fabric H, cut:

one each of Pieces 45-50
one of Piece 51
one of Piece 53
one of Piece 58
one of Piece 62
one of Piece 63



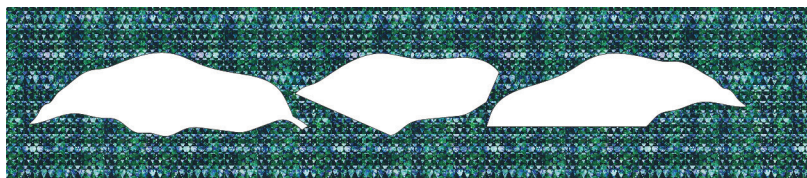
From Fabric I, cut:

one of Piece 1
one of Piece 4, reversed
one of Piece 28
one of Piece 39
one of Piece 42
one of Piece 43
one of Piece 52
one of Piece 56
one of Piece 57

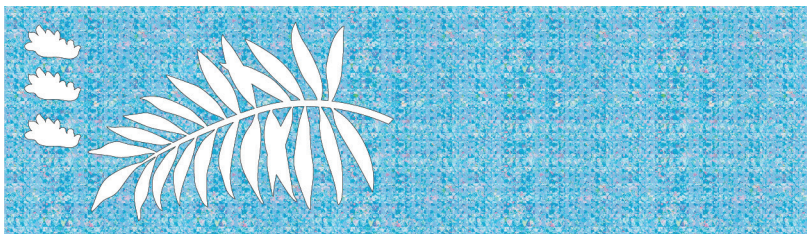


From Fabric J, cut:

one of Piece 5
one of Piece 7
one of Piece 8

**From Fabric K, cut:**

one of Piece 3, reversed
one of Piece 13
one of Piece 18
one of Piece 23

**From the Binding Fabric, cut:**

five 2-1/2" x WOF strips

Prepare the Templates

Step 1: Copy all templates at 100%.

Step 2: On the fusible web, trace the indicated number of each Template, as instructed on the Template sheets. Be sure to note the quantity and if the template should be traced in reverse. Tip: In addition to the piece number, include the fabric letter shown on the Template. This will help you to ensure you are fusing it to the correct fabric.

Step 3: Cut out each traced shape, leaving 1/4"-1/2" of excess fusible web outside the marked lines. You will NOT cut on the marked/traced lines at this point.

Step 4: Follow in the steps below to fuse each piece to the appropriate fabric. Fuse, following the manufacturer's instructions, then cut out each shape on the marked line.

Assemble the Quilt

Step 5: Using the Appliqué Placement diagram as a guide, place the assorted template pieces on the quilt top. Pin in place. One piece at a time, peel the paper backing and fuse to the quilt top. Continue adding appliqué pieces to the quilt until all templates are in place. Where pieces are layered, fuse the bottom layer to the quilt first, then add additional layers once the previous piece has cooled. Edge stitch the templates prior to quilting.

Step 6: Sew the side inner borders to the sides of the quilt center. Press toward the borders. Sew the top and bottom inner borders to the quilt center. Press toward the borders.

Step 7: Center and pin one side outer border to the quilt top. Sew the border, starting and stopping 1/4" from each end of the quilt top. Repeat with the remaining side outer border. Repeat with the top and bottom borders. Note: borders will extend beyond the quilt's edge.



Appliqué Placement Diagram

Step 8: Fold the quilt diagonally, right sides together and align two of the borders directly on top of each other.

Use your ruler to draw a line from the corner of the quilt to the edge of the border.



Step 9: Sew along this marked line, beginning at the point where your border stitching had ended and sew to the edge of the border. Check to be sure the mitered border presses flat from the front, then trim 1/4" away from the marked line, removing the excess border length.

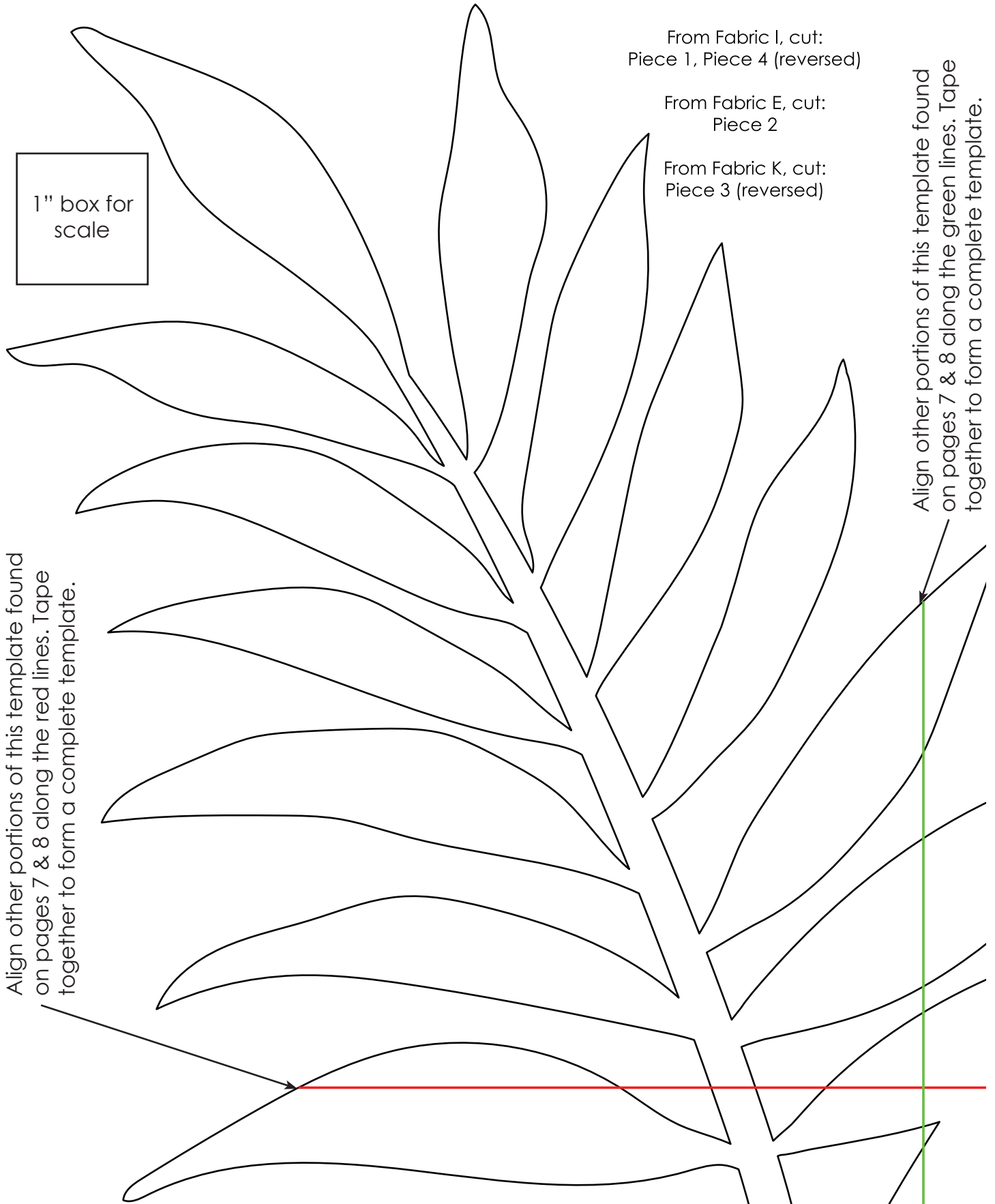


Your quilt top is complete! Baste, quilt, bind and enjoy!

Templates

Print at 100%.

Check size printed correctly using 1" box for scale prior to cutting fabric.



Align other portions of this template found on pages 6, 7 & 8 along the green lines. Tape together to form a complete template.

1" box for scale

Align other portions of this template found on pages 6, 7 & 8 along the red lines. Tape together to form a complete template.

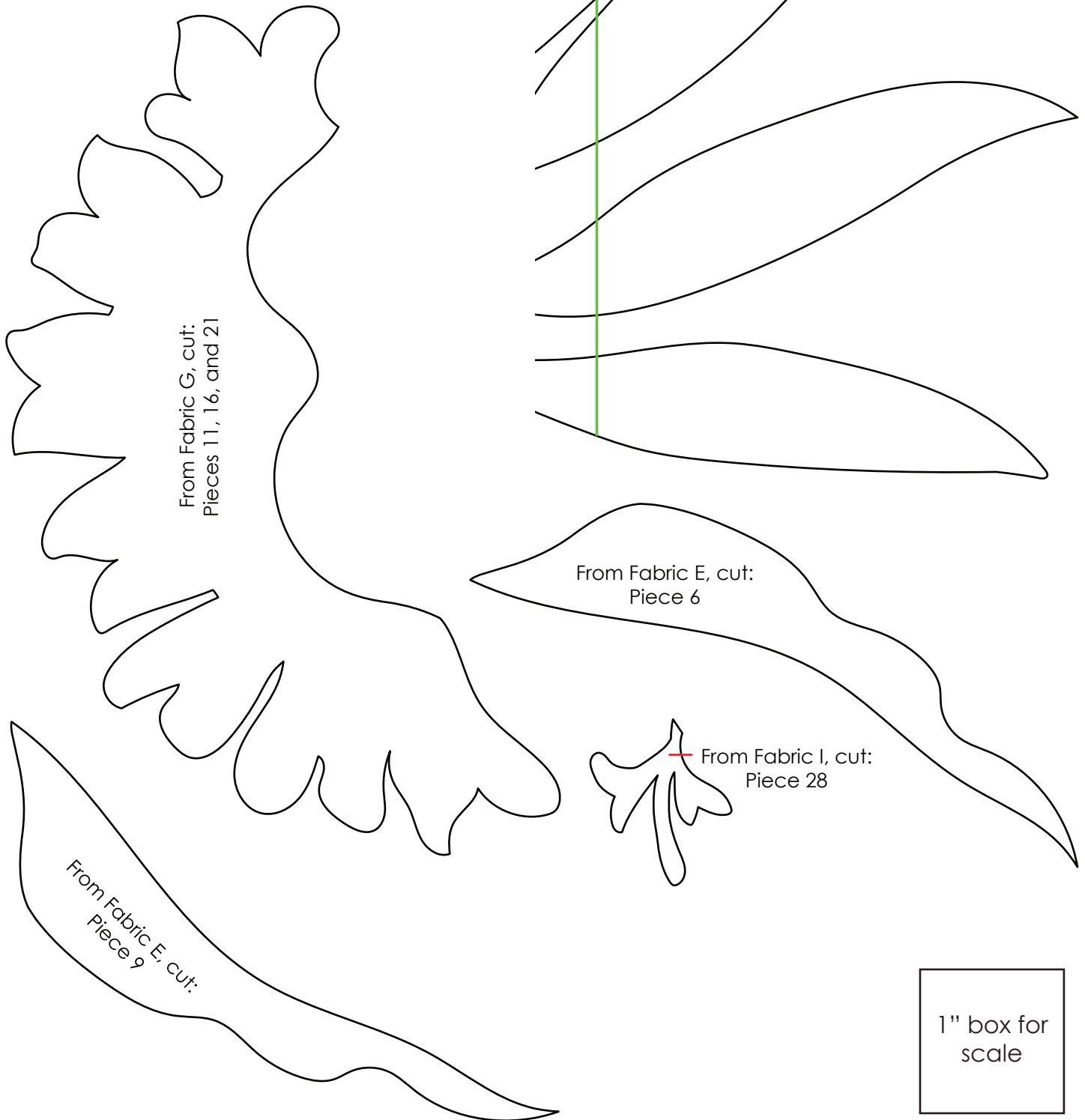


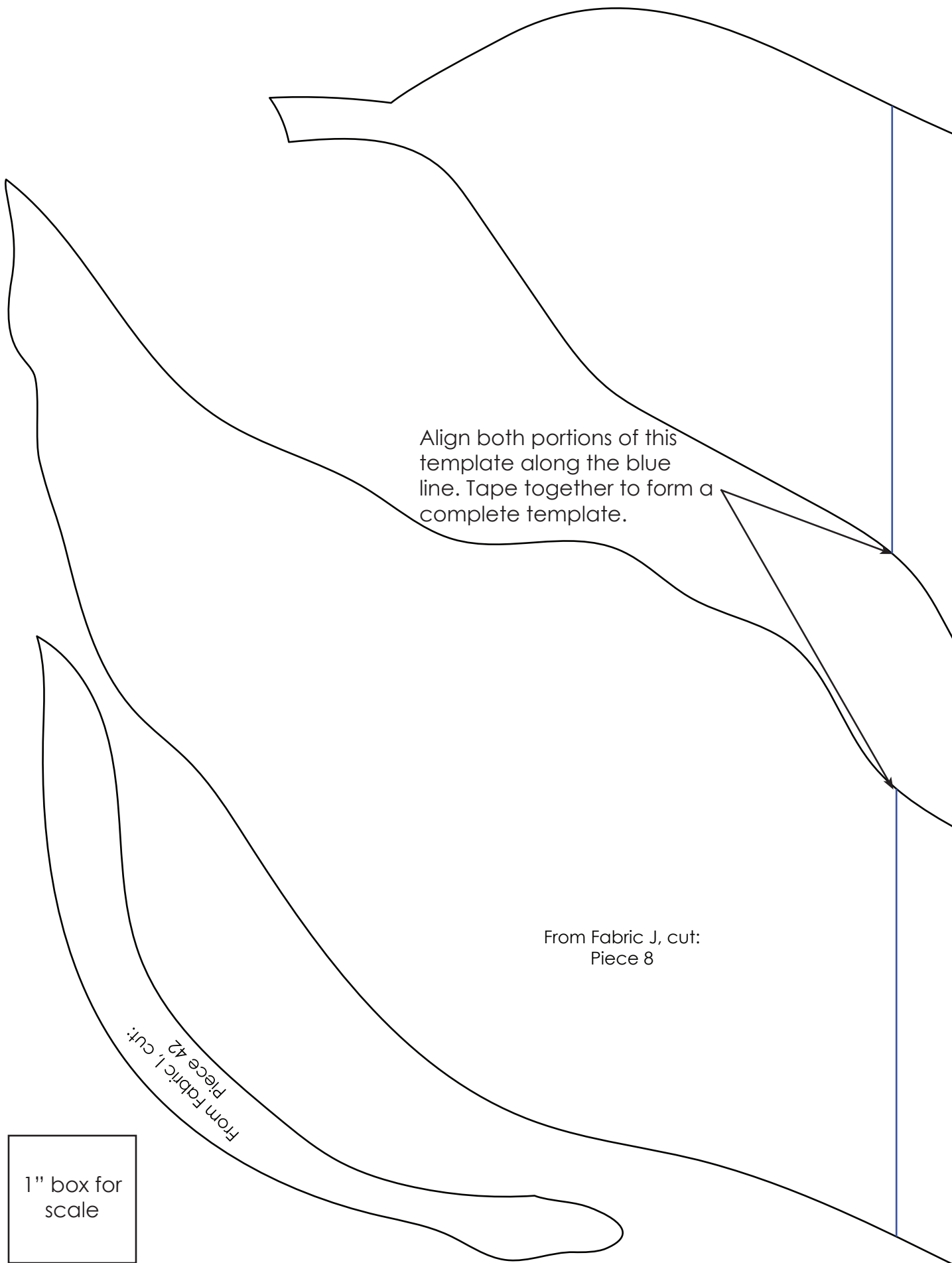
Align other portions of this template found on pages 6, 7 & 8 along the red lines. Tape together to form a complete template.

Align other portions of this template found on pages 6, 7 & 8 along the green lines. Tape together to form a complete template.

Align other portions of this template found on pages 6 & 7 along the red lines. Tape together to form a complete template.

Align other portions of this template found on pages 6 & 7 along the green lines. Tape together to form a complete template.





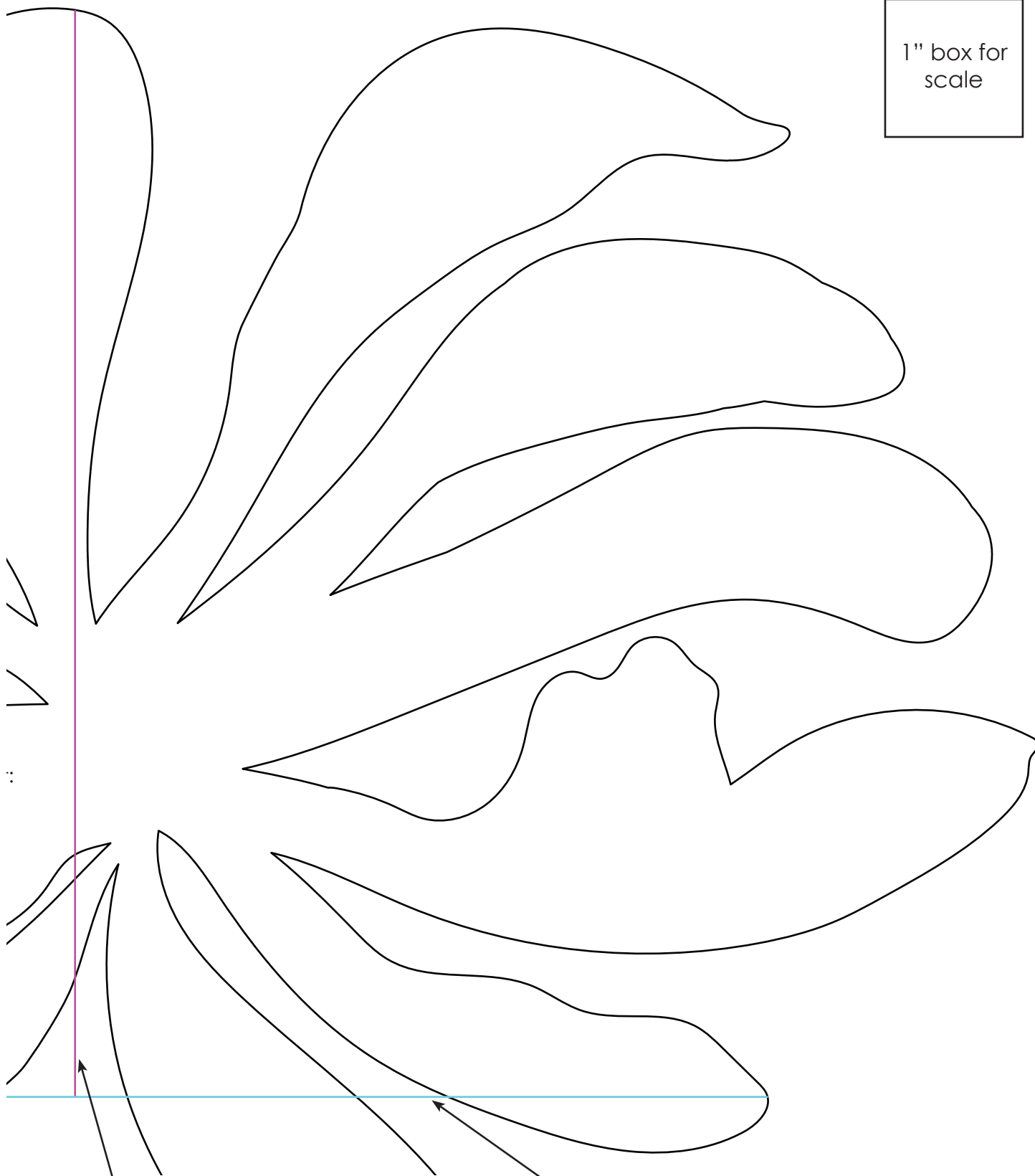
Align both portions of this template along the blue line. Tape together to form a complete template.

From Fabric J, cut:
Piece 8

From Fabric I, cut:
Piece 42

1" box for
scale

1" box for
scale



Align the portion of this
template found on page 11
along the magenta line. Tape
together to form a complete
template.

Align the portions of this
template found on page 11
along the light blue line. Tape
together to form a complete
template.

1" box for
scale

From Fabric I, cut:
Piece 43

From Fabric F, cut:
Piece 44

Align the portion of
this template found
on pages 10 along the
magenta line. Tape
together to form a
complete template.

Align the portions of this template along
the light blue line. Tape together to form
a complete template.

Align both portions of this template along the red lines. Tape together to form a complete template.

From Fabric B, cut:
Piece 10

From Fabric B, cut:
Piece 15

From Fabric B, cut:
Piece 20

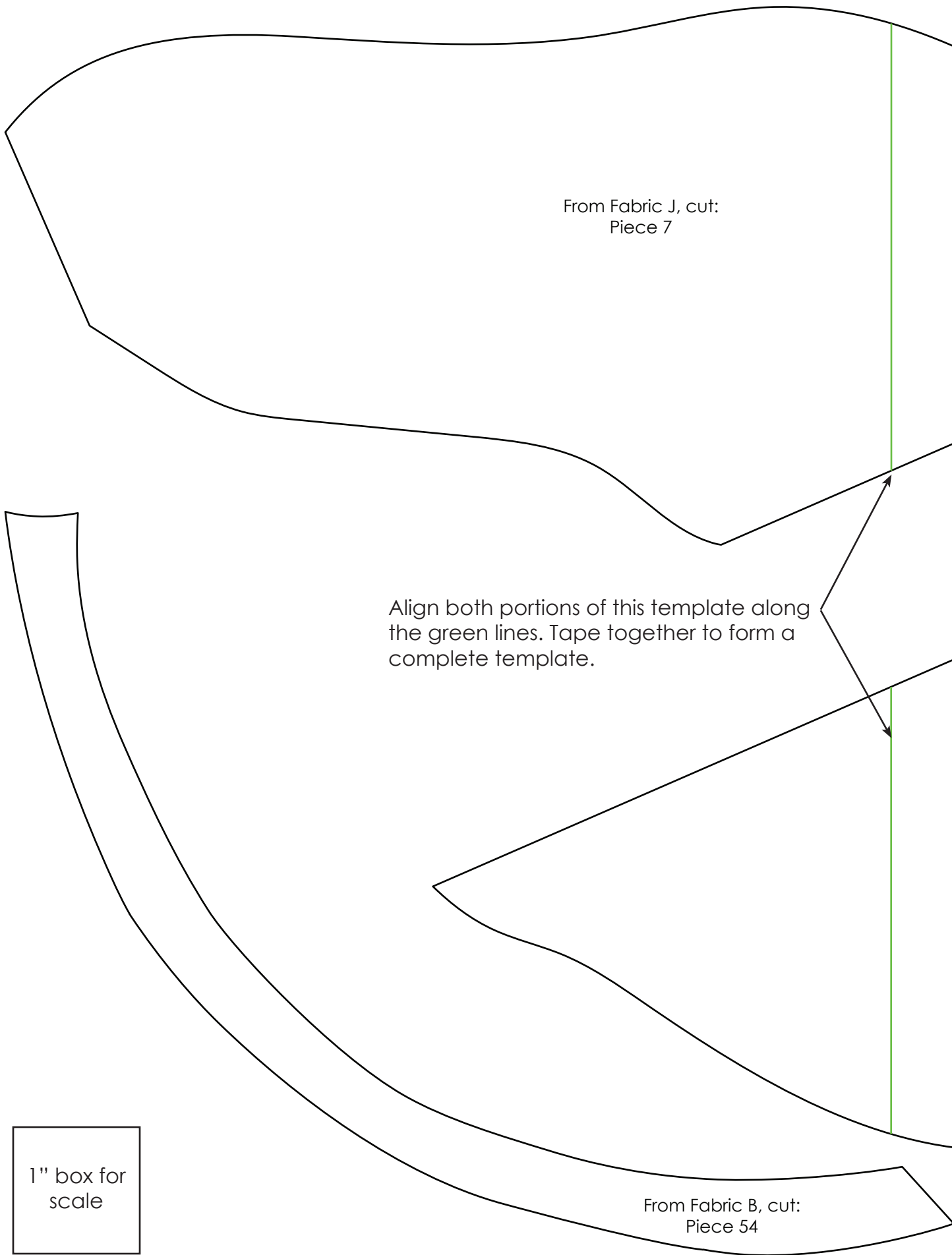
From Fabric D, cut:
Pieces 12, 17, and 22

From Fabric K, cut:
Pieces 13, 18, and 23

From Fabric B, cut:
Pieces 14, 19, and 24

From Fabric E, cut:
Piece 40

1" box for
scale



From Fabric J, cut:
Piece 7

Align both portions of this template along
the green lines. Tape together to form a
complete template.

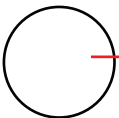
From Fabric B, cut:
Piece 54

1" box for
scale

1" box for
scale

From Fabric J, cut:
Piece 5

Align both portions of this template along
the light blue lines. Tape together to form
a complete template.



From Fabric I, cut:
Piece 57



From Fabric H, cut:
Piece 58



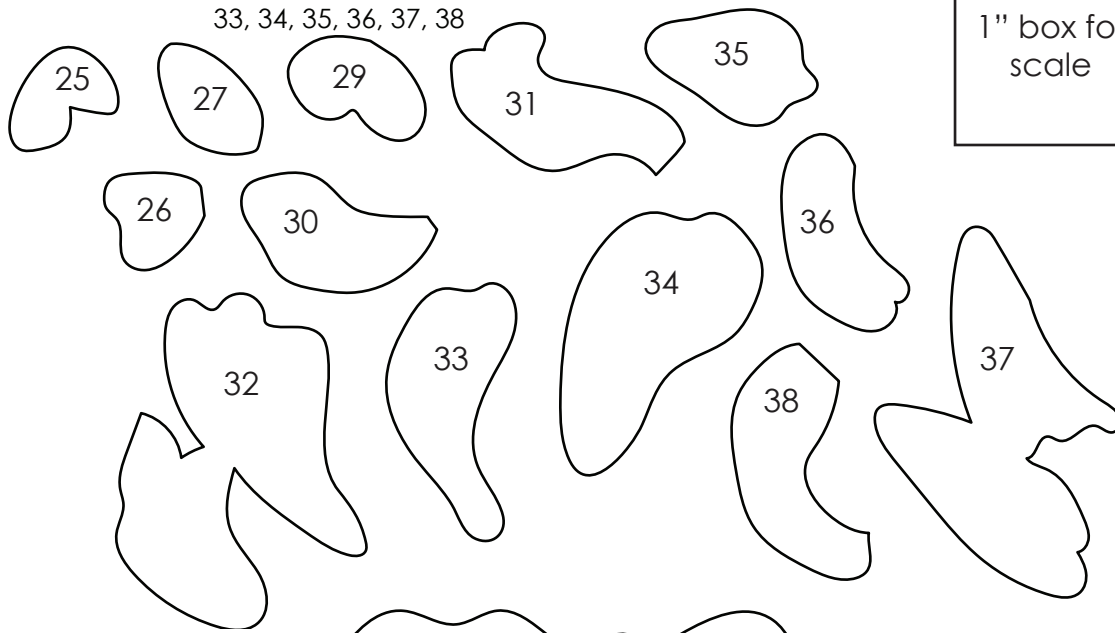
From Fabric E, cut:
Piece 59



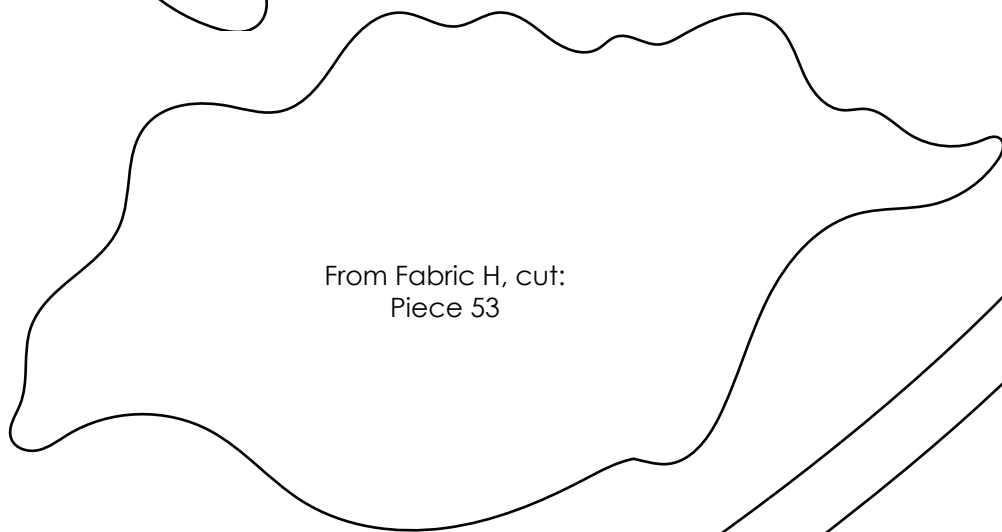
From Fabric E, cut:
Piece 60

From Fabric F, cut:
Pieces 25, 26, 27, 29, 30, 31, 32,
33, 34, 35, 36, 37, 38

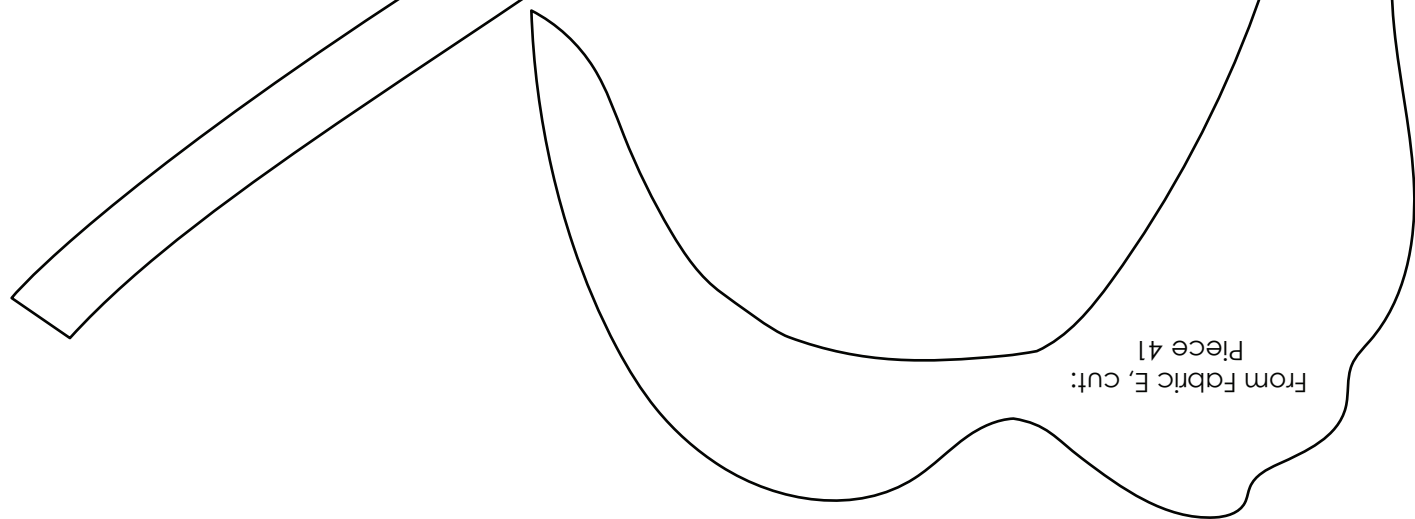
1" box for
scale



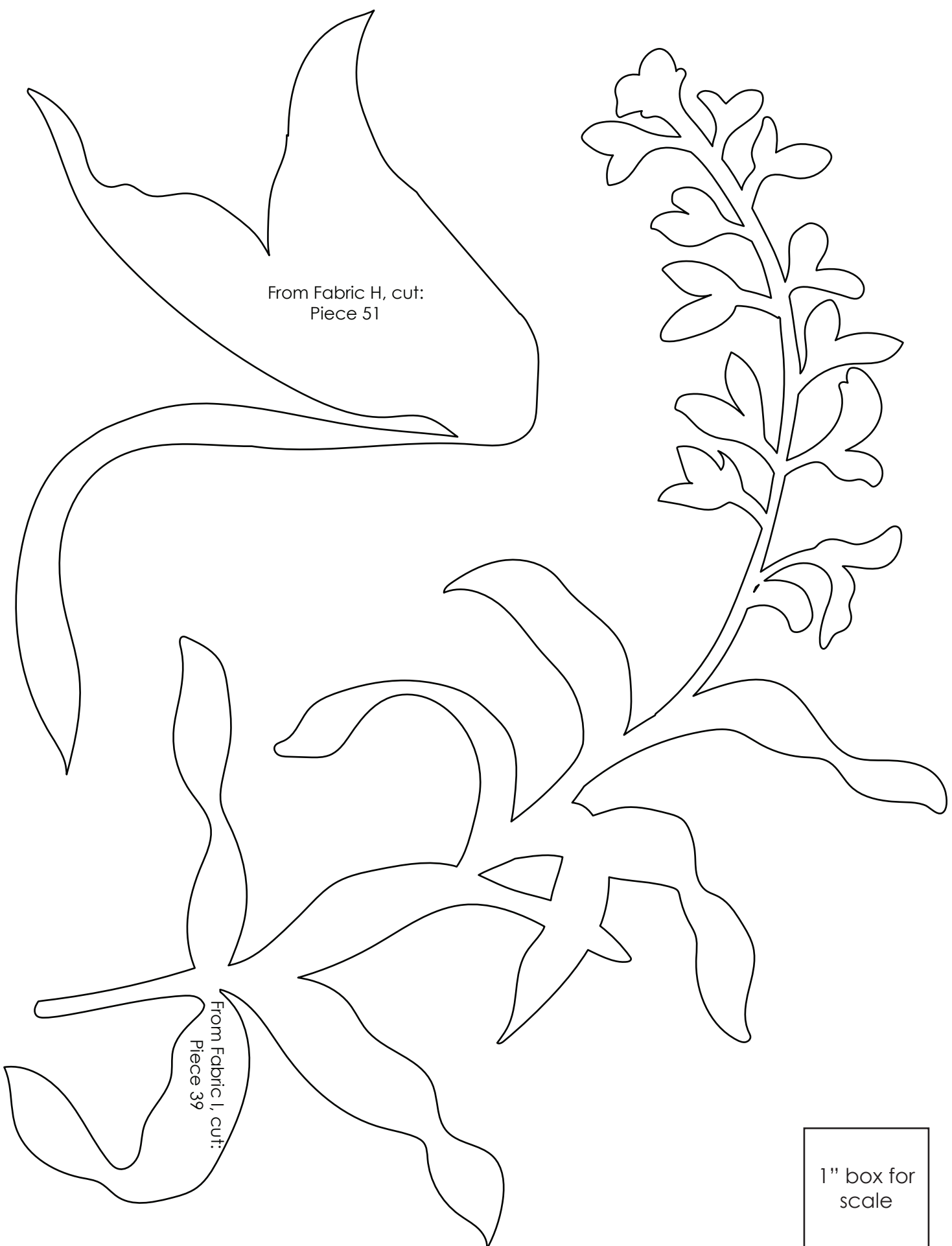
From Fabric H, cut:
Piece 53



From Fabric I, cut:
Piece 52



From Fabric E, cut:
Piece 41



From Fabric H, cut:
Piece 51

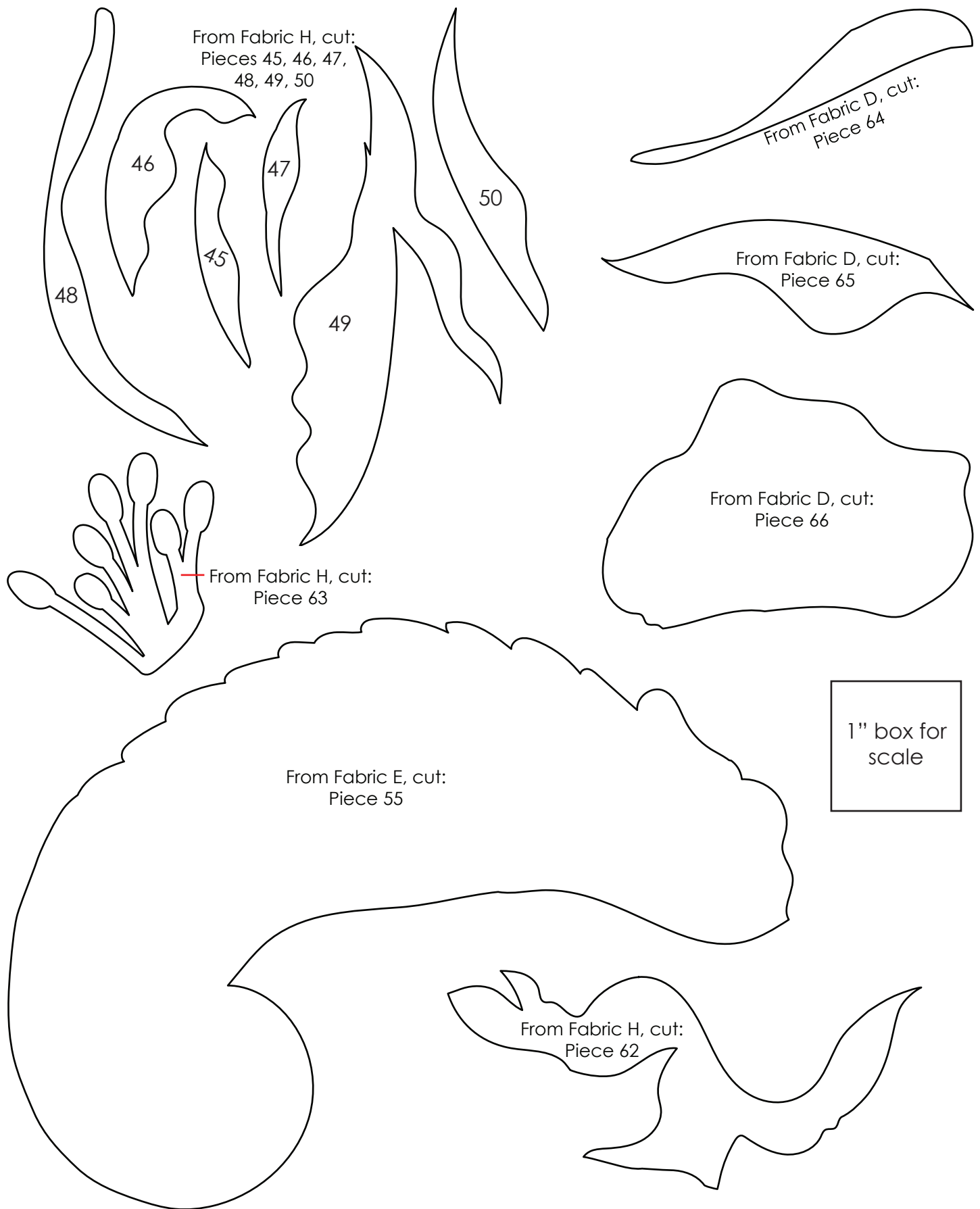
From Fabric I, cut:
Piece 39

1" box for
scale

1" box for
scale

From Fabric I, cut:
Piece 56

From Fabric G, cut:
Piece 61



This pattern may be used for personal purposes only and may not be reproduced in any form without the express permission from Robert Kaufman Fabrics. This pattern is not for resale. All patterns, unless otherwise attributed, are © Robert Kaufman Co., Inc. 2005-2020. All rights reserved.