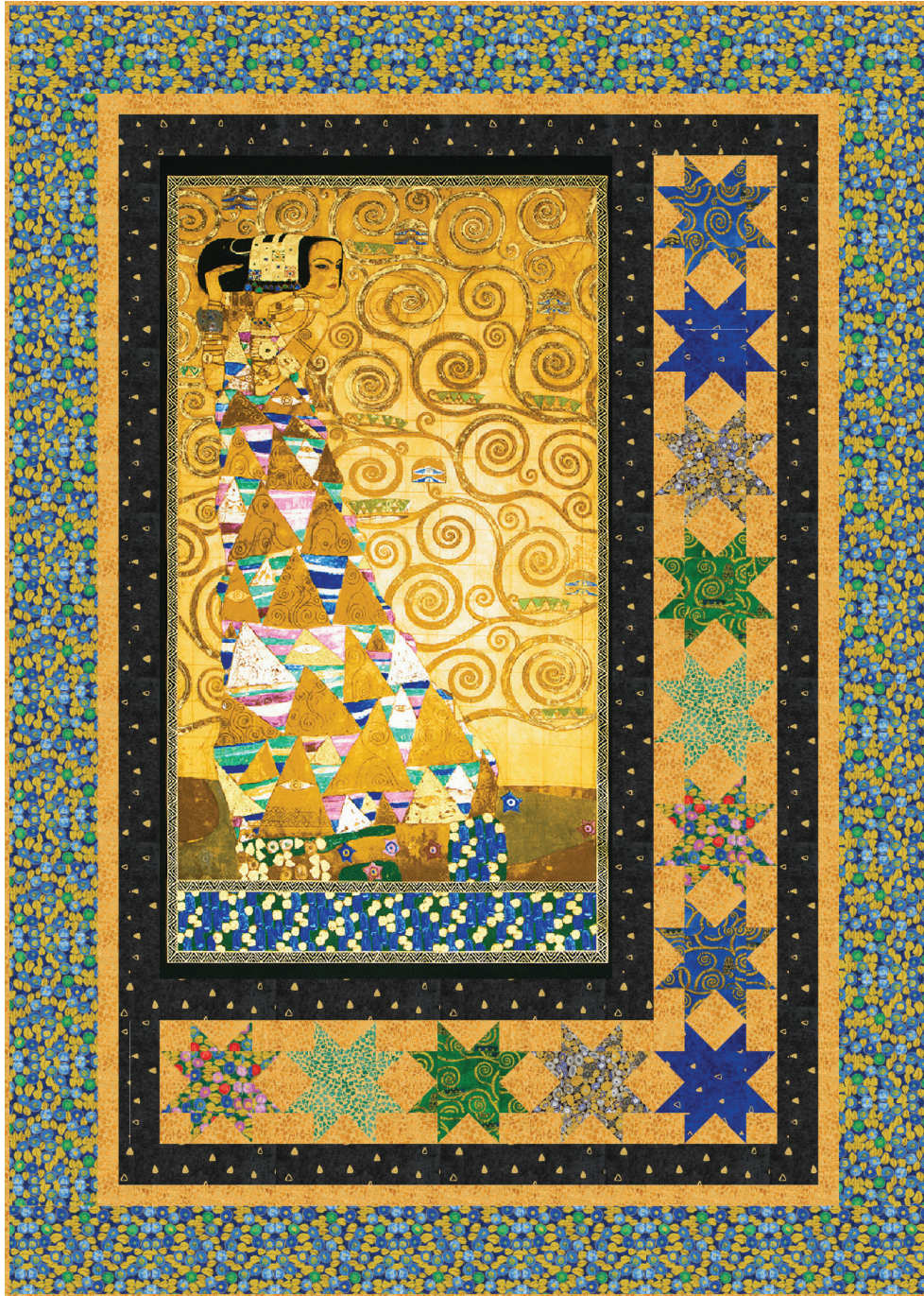


# HAPPY TOWN

Designed by Elise Lea for RK  
[www.robertkaufman.com](http://www.robertkaufman.com)

Featuring **GUSTAV KLIMT**



Finished quilt measures: 45" x 63"











Difficulty Rating: **Intermediate**

**ROBERTKAUFMAN**  
F A B R I C S

For questions about this pattern, please email [Patterns@RobertKaufman.com](mailto:Patterns@RobertKaufman.com).

## Fabric and Supplies Needed

*Fabric amounts based on yardage that is 42" wide.*

Color	Fabric	Name/SKU	Yardage	Color	Fabric	Name/SKU	Yardage
	A	SRKM-21348-133 GOLD	2/3 yard (one full panel)		F	SRKM-18657-40 EMERALD	1/8 yard
	B	SRKM-17182-2 BLACK	1-1/2 yards		G	SRKM-21351-205 MULTI	1/8 yard
	C	SRKM-21350-72 COBALT	1/8 yard		H	SRKM-18657-133 GOLD	2/3 yard
	D	SRKM-17182-72 COBALT	1/8 yard		I	SRKM-21351-74 SAPPHIRE	1-5/8 yards
	E	SRKM-21350-7 GREEN	1/8 yard		Binding*	SRKM-18657-133 GOLD <i>*Also used for Fabric H</i>	1/2 yard
<p>Copyright 2022, Robert Kaufman For individual use only - Not for resale</p>				<p>You will also need: 3 yards for backing</p>			

### Notes Before You Begin

- Read through all of the instructions before beginning.
- All of the seam allowances are 1/4" unless otherwise noted.
- Press seam allowances open unless otherwise noted.
- Width of fabric (WOF) is equal to at least 42" wide.
- Right sides together has been abbreviated to RST.
- Remember to measure twice and cut once!

## Cutting Instructions

### **From Fabric A, fussy cut:**

22-1/2" x 40-1/2" center panel

### **From Fabric B, cut:**

one 3-1/2" x WOF strip. Subcut:

two 3-1/2" squares for the block centers

Trim the remainder of the strip to 2-3/8" wide, then cut:

eight 2-3/8" squares for the flying geese

three 2-1/2" x length of fabric strips. Subcut:

two 2-1/2" x 40-1/2" side borders for the center panel

one 2-1/2" x 48-1/2" side Border 1 strip

one 2-1/2" x 6-1/2" rectangle

From the remaining width of fabric, cut:

three 2-1/2" x WOF strips. Sew together, end-to-end, then cut:

one 2-1/2" x 26-1/2" bottom border for the center panel

two 2-1/2" x 34-1/2" top/bottom Border 1 strips

### **From each of Fabrics C-G, cut:**

one 3-1/2" x WOF strip. Subcut:

two 3-1/2" squares for the block centers

Trim the remainder of the strip to 2-3/8" wide, then cut:

eight 2-3/8" squares for the flying geese

### **From Fabric H, cut:**

two 4-1/4" x WOF strips. Subcut:

twelve 4-1/4" squares for the flying geese

three 2" x WOF strips. Subcut:

forty-eight 2" squares

five 1-1/2" x WOF strips. Sew together, end-to-end, then cut:

two 1-1/2" x 52-1/2" side Border 2 strips

two 1-1/2" x 36-1/2" top/bottom Border 2 strips

### **From Fabric I, cut:**

two 5" x length of fabric strips. Subcut:

two 5" x 54-1/2" side Border 3 strips

From the remaining width of fabric, cut:

three 5" x WOF strips. Sew together, end-to-end, then cut:

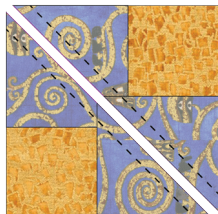
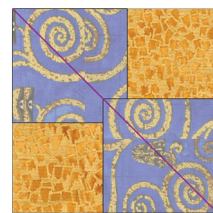
two 5" x 45-1/2" top/bottom Border 3 strips

### **From the Binding Fabric, cut:**

six 2-1/2" x WOF strips

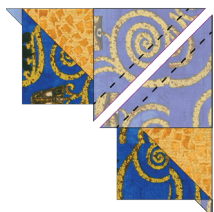
## Assemble the Blocks

**Step 1:** Pin two 2-3/8" Fabric C squares in opposing corners of a 4-1/4" Fabric H square, RST. The squares will overlap slightly in the center of the large square. Using a ruler, draw a diagonal line through the squares.



**Step 2:** Sew scant 1/4" seam on each side of the diagonal line. Set the seam by pressing it flat. Cut along the diagonal line, creating two identical units.

**Step 3:** Press the fabric toward smaller triangles. Repeat with the second unit.



**Step 4:** Place one 2-3/8" Fabric C square at the corner of sewn block unit. Draw diagonal line in pencil. Sew a scant 1/4" seam on each side of diagonal line. Set seam (press). Cut along diagonal line, creating two identical units.

**Step 5:** Press the seam toward smaller triangle. Trim off small dog ears left by the seam allowance. Trim to 2" x 3-1/2" if necessary. Repeat to make four flying geese blocks.



**Step 6:** Repeat with all remaining 2-3/8" Fabric C-H squares and 4-1/4" Fabric H squares to make a total of:



eight Fabric C flying geese



eight Fabric D flying geese



eight Fabric E flying geese



eight Fabric F flying geese



eight Fabric G flying geese



eight Fabric B flying geese



**Step 7:** Gather:  
 one 3-1/2" Fabric C square  
 four Fabric C flying geese  
 four 2" Fabric H squares

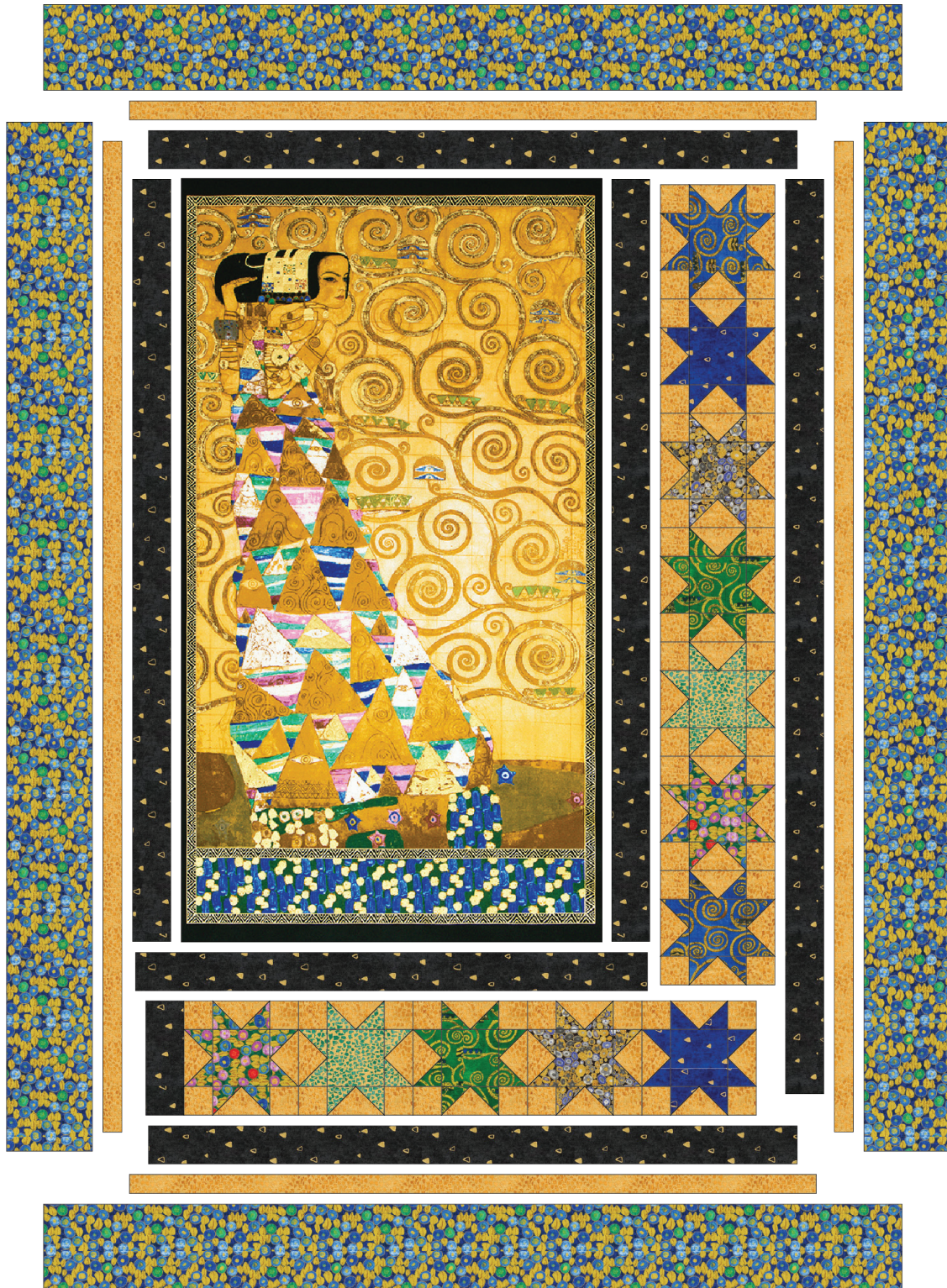
Arrange the units into three rows of three. Note the fabric placement and block orientation in the Block Assembly Diagram.

**Step 8:** Sew the units together to form the rows. Press the seams toward the squares.

**Step 9:** Sew the rows together, nesting the seams and pressing the seams to one side to form the block. The block should measure 6-1/2" square.

Repeat Steps 7-9 to make two blocks from each of Fabrics B-G.

## Assemble the Quilt



*Note: As each border is added, pay close attention to the orientation of the print on the fabric and ensure that it matches the orientation shown in the Quilt Assembly Diagram.*

**Step 10:** Sew the 40-1/2" Fabric B side center panel borders to the left and right edges of the Fabric A center. Press toward the borders. Sew the 26-1/2" long Fabric B bottom border to the bottom of the quilt center. Press.

**Step 11:** Gather and sew the following blocks together in this order to form a column.  
Fabric C - Fabric D - Fabric B - Fabric E - Fabric F - Fabric G - Fabric C

Sew to the right edge of the quilt center, noting the orientation of the column in the Quilt Assembly Diagram.

**Step 12:** Gather and sew the following blocks and the 2-1/2" x 6-1/2" Fabric B rectangle together in this order to form a row.

Fabric B rectangle - Fabric G - Fabric F - Fabric E - Fabric B - Fabric D

Sew to the bottom edge of the quilt center, noting the orientation of the row in the Quilt Assembly Diagram.

**Step 13:** Sew the side Border 1 strip to the right edge of the quilt center. Press. Sew the top/bottom Border 1 strips to the top and bottom edges of the quilt center. Press.

**Step 14:** Sew the side Border 2 strips to the sides of the quilt center. Press. Sew the top/bottom Border 2 strips to the top and bottom edges of the quilt center. Press.

**Step 15:** Sew the side Border 3 strips to the sides of the quilt center. Press. Sew the top/bottom Border 3 strips to the top and bottom edges of the quilt center. Press.

Your quilt top is complete. Baste, quilt, bind and enjoy!