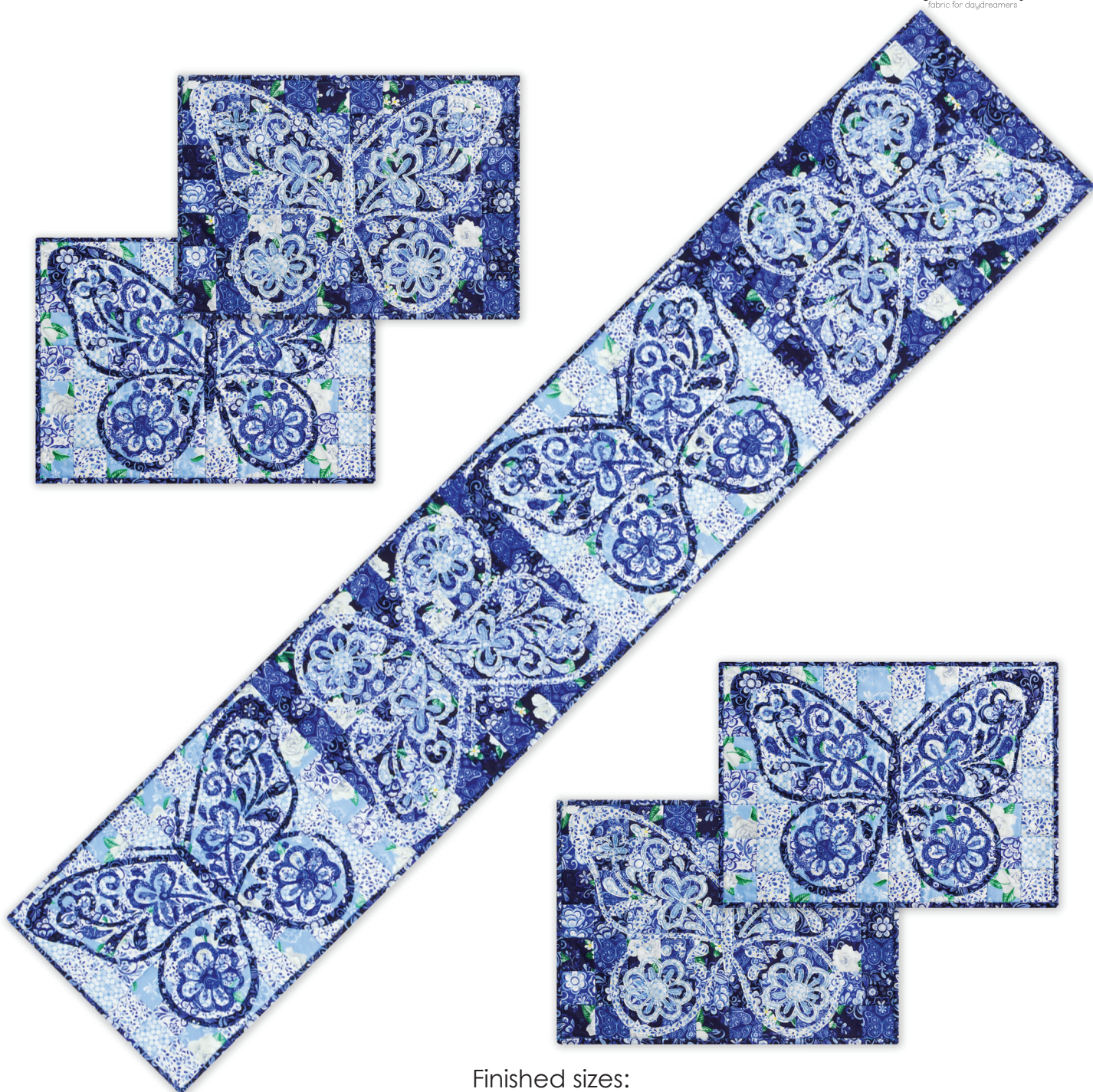


FLUTTER FANCY PLACEMATS & TABLE RUNNER

Designed by Wishwell for RK
www.robertkaufman.com

Featuring

Gardenia Party
Wishwell
fabric for daydreamers



Finished sizes:

Placemats: 14" x 20", Table Runner: 14" x 76"








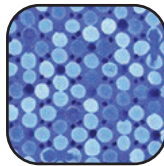



Difficulty Rating: **Beginner**

ROBERTKAUFMAN
F A B R I C S

For questions about this pattern, please email Patterns@RobertKaufman.com.

Fabric and Supplies Needed

Fabric amounts based on yardage that is 42" wide.

Color	Fabric	Name/SKU	Yardage	Color	Fabric	Name/SKU	Yardage
	A	WEL-19630-9 NAVY	1/2 yard		G	WEL-19635-75 DELFT	1-1/4 yard
	B	WEL-19633-72 COBALT	1/3 yard		H	WEL-19636-390 BREEZE	7/8yard
	C	WEL-19634-62 INDIGO	1 yard		I	WEL-19634-370 POOL	1/4 yard
	D	WEL-19633-9 NAVY	1-1/3 yard		J	WEL-19636-405 WATERFALL	1/4 yard
	E	WEL-19631-63 SKY	1/2 yard		Binding*	WEL-19633-9 NAVY	7/8 yard
	F	WEL-19633-75 DELFT	1/3 yard	<p>You will also need: Backing: 1-1/4 yard for the runner, 1-1/2 yard total for the placemats</p> <p>Other: Fusible interfacing, 4 yards</p>			*Also used for Fabric D
<p>Copyright 2020, Robert Kaufman For individual use only - Not for resale</p>							

Notes Before You Begin

- Read through all of the instructions before beginning.
- All of the seam allowances are 1/4" unless otherwise noted.
- Press seam allowances open unless otherwise noted.
- Width of fabric (WOF) is equal to at least 42" wide.
- Right sides together has been abbreviated to RST.
- Remember to measure twice and cut once!

Prepare the Templates

Step 1: Copy all templates at 100%.

Step 2: On the fusible web, trace the indicated number of each Template, as instructed on the Template sheets. Be sure to note the quantity and if the template should be traced in reverse. Tip: In addition to the piece number, include the fabric letter shown on the Template. This will help you to ensure you are fusing it to the correct fabric.

Step 3: Cut out each traced shape, leaving 1/4"-1/2" of excess fusible web outside the marked lines. You will NOT cut on the marked/traced lines at this point.

Step 4: Follow in the steps below to fuse each piece to the appropriate fabric. Fuse, following the manufacturer's instructions, then cut out each shape on the marked line.

Cutting Instructions

From Fabric A, cut:

six 2-1/2" x WOF strips. Set four aside for strip piecing. From the remaining two strips, subcut: nineteen 2-1/2" squares for the A Blocks

From Fabric B, cut:

four 2-1/2" x WOF strips. Set aside for strip piecing.

From Fabric C, cut:

six 2-1/2" x WOF strips. Set four aside for strip piecing. From the remaining two strips, subcut: twenty 2-1/2" squares for the A Blocks

Cut four of Templates 10-21

Cut four of Templates 10-21 Reversed

From Fabric D, cut:

four 2-1/2" x WOF strips. Set aside for strip piecing.

Cut four of Template 1

Cut four of Templates 2-9

Cut four of Templates 2-9 Reversed

From Fabric E, cut:

six 2-1/2" x WOF strips. Set four aside for strip piecing. From the remaining two strips, subcut: nineteen 2-1/2" squares for the B Blocks

From Fabric F, cut:

four 2-1/2" x WOF strips. Set aside for strip piecing.

From Fabric G, cut:

six 2-1/2" x WOF strips. Set four aside for strip piecing. From the remaining two strips, subcut: twenty 2-1/2" squares for the B Blocks

Cut four of Template 1

Cut four of Templates 2-9

Cut four of Templates 2-9 Reversed

From Fabric H, cut:

four 2-1/2" x WOF strips. Set aside for strip piecing.

Cut four of Templates 10-21

Cut four of Templates 10-21 Reversed

From Fabric I, cut:

Cut four of Templates 22-30

Cut four of Templates 22-30 Reversed

From Fabric J, cut:

Cut four of Templates 22-30

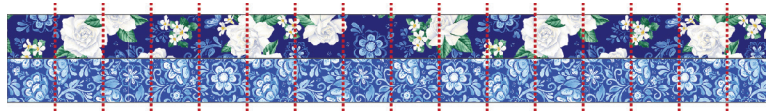
Cut four of Templates 22-30 Reversed

From the Binding Fabric, cut:

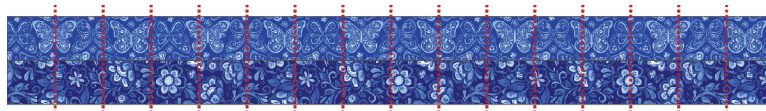
twelve 2-1/2" x WOF strips

Assemble the Blocks

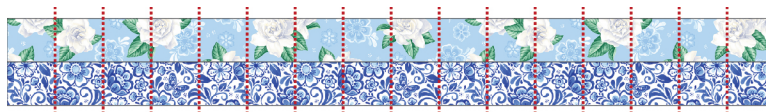
Step 1: Sew a Fabric A strip to a Fabric B strip, along one long edge. Press toward the B strip. Repeat to make four strip sets like this. Subcut the stripset into a total of fifty-seven 2-1/2" wide A/B units, as shown.



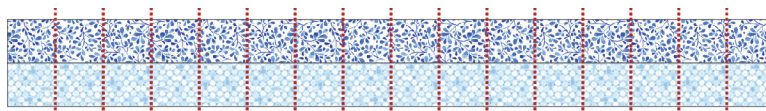
Step 2: Repeat Step 1, using Fabric C and Fabric D strips (pressing toward Fabric C) to make sixty 2-1/2" wide C/D units, as shown.

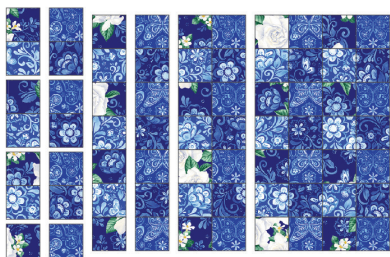


Step 3: Repeat Step 1, using Fabric E and Fabric F strips (pressing toward Fabric F) to make fifty-seven 2-1/2" wide E/F units, as shown.



Step 4: Repeat Step 1, using Fabric G and Fabric H strips (pressing toward Fabric G) to make sixty 2-1/2" wide G/H units, as shown.



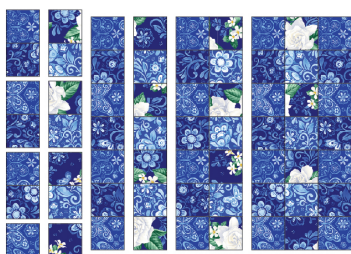


Step 5: Gather:
fifteen A/B units
fifteen C/D units
five Fabric A squares
five Fabric C squares

Arrange the units into ten columns, as shown. Note the fabric placement and block orientation in the Block Assembly Diagram.

Step 6: Sew the squares and strip set units together to form the columns. Press the in opposite directions every other column.

Step 7: Sew the columns together, nesting the seams and pressing the seams to one side to form the block. The A Block should measure 14-1/2" x 20-1/2". Repeat to make three A Blocks.

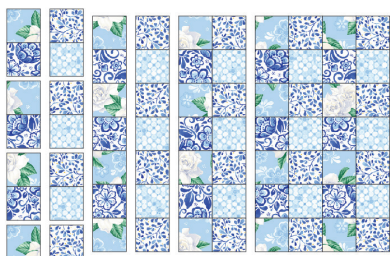


Step 8: Gather:
twelve A/B units
fifteen C/D units
four Fabric A squares
five Fabric C squares

Arrange the units into nine columns, as shown. Note the fabric placement and block orientation in the Block Assembly Diagram.

Step 9: Sew the squares and strip set units together to form the columns. Press the in opposite directions every other column.

Step 10: Sew the columns together, nesting the seams and pressing the seams to one side to form the block. The A2 Block should measure 14-1/2" x 18-1/2".



Step 11: Gather:
fifteen E/F units
fifteen G/H units
five Fabric E squares
five Fabric G squares

Step 12: Repeat the process from Steps 5 and 6 to make three 14-1/2" x 20-1/2" B Blocks.

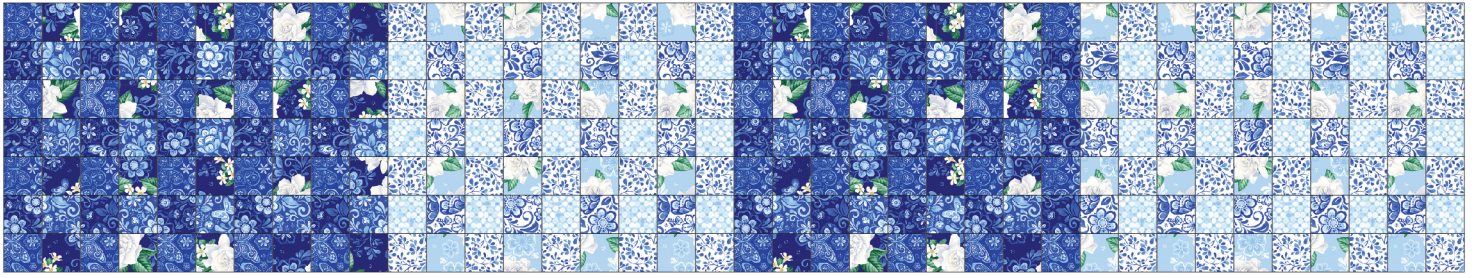


Step 13: Gather:
twelve E/F units
fifteen G/H units
four Fabric E squares
five Fabric G squares

Step 14: Repeat the process from Steps 8 and 9 to make one 14-1/2" x 18-1/2" B2 Block.

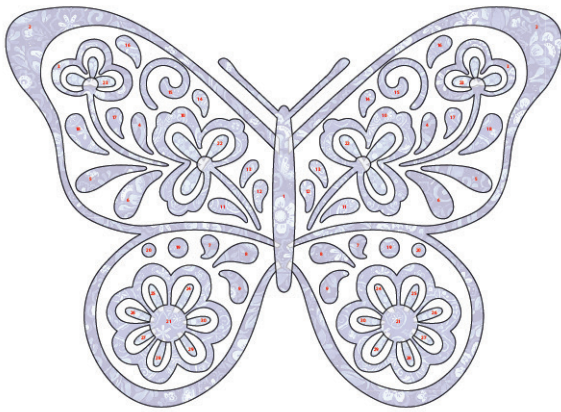
Assemble the Table Runner

Step 14: Sew together, in this order: A Block + B2 Block + A2 Block + B Block, sewing along the shorter edges, to form the table runner.

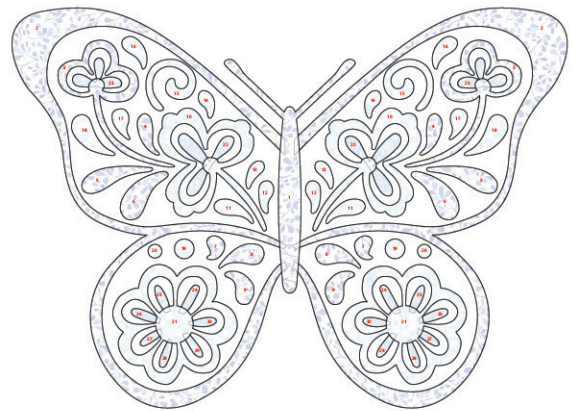


Assemble the Appliqué

Step 15: Using the Appliqué Placement diagram as a guide, place the assorted template pieces on each Placemat and Block in the table runner. Pin in place. One piece at a time, peel the paper backing and fuse to the Blocks. Continue adding appliqué pieces to the Blocks until all templates are in place. Edge stitch the templates prior to quilting.



Dark Butterfly



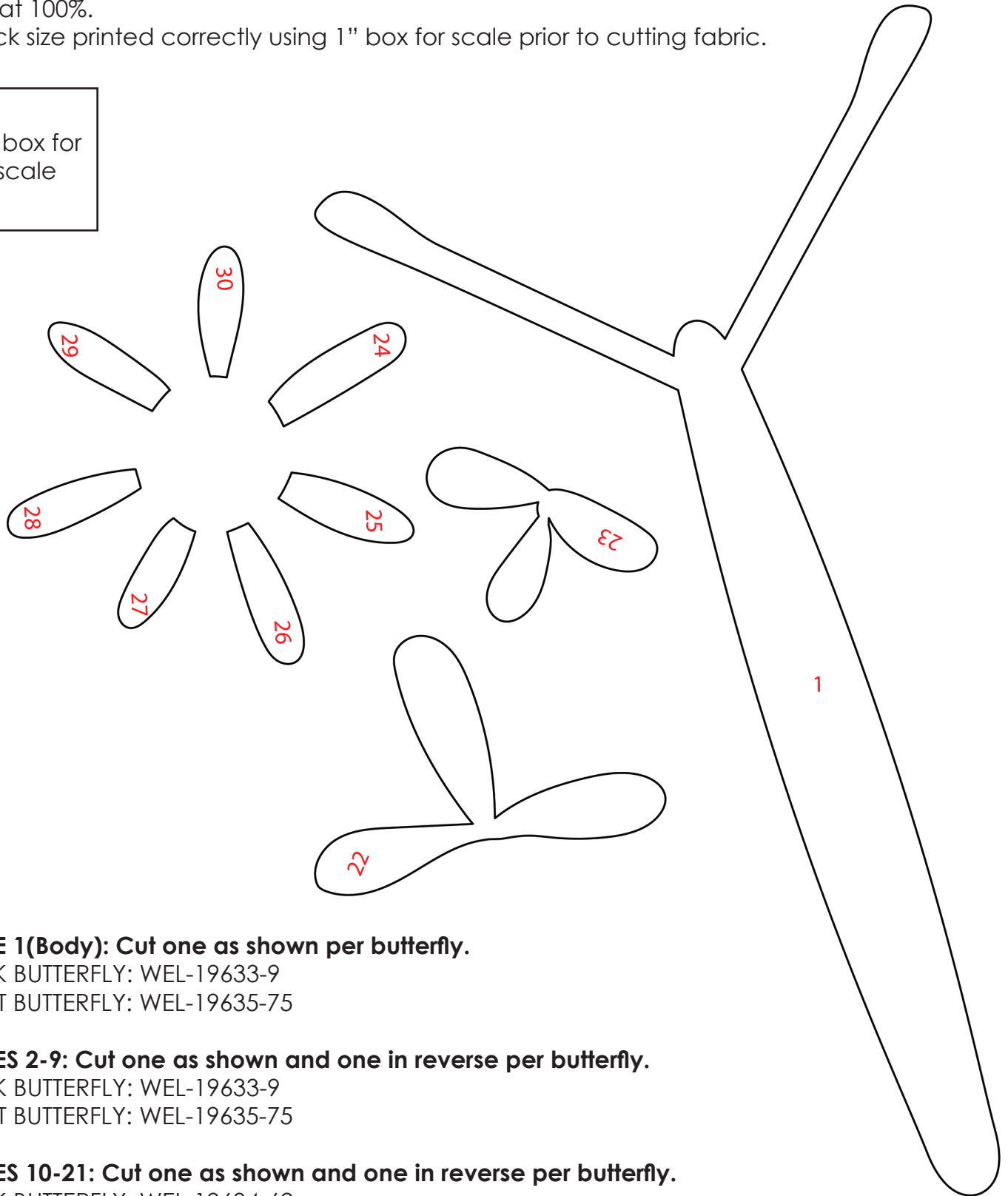
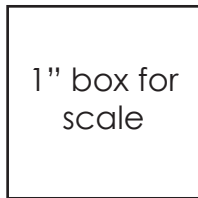
Light Butterfly

Step 16: Baste, quilt and bind the table runner and placements to complete!

Templates

Print at 100%.

Check size printed correctly using 1" box for scale prior to cutting fabric.



PIECE 1(Body): Cut one as shown per butterfly.

DARK BUTTERFLY: WEL-19633-9

LIGHT BUTTERFLY: WEL-19635-75

PIECES 2-9: Cut one as shown and one in reverse per butterfly.

DARK BUTTERFLY: WEL-19633-9

LIGHT BUTTERFLY: WEL-19635-75

PIECES 10-21: Cut one as shown and one in reverse per butterfly.

DARK BUTTERFLY: WEL-19634-62

LIGHT BUTTERFLY: WEL-19636-390

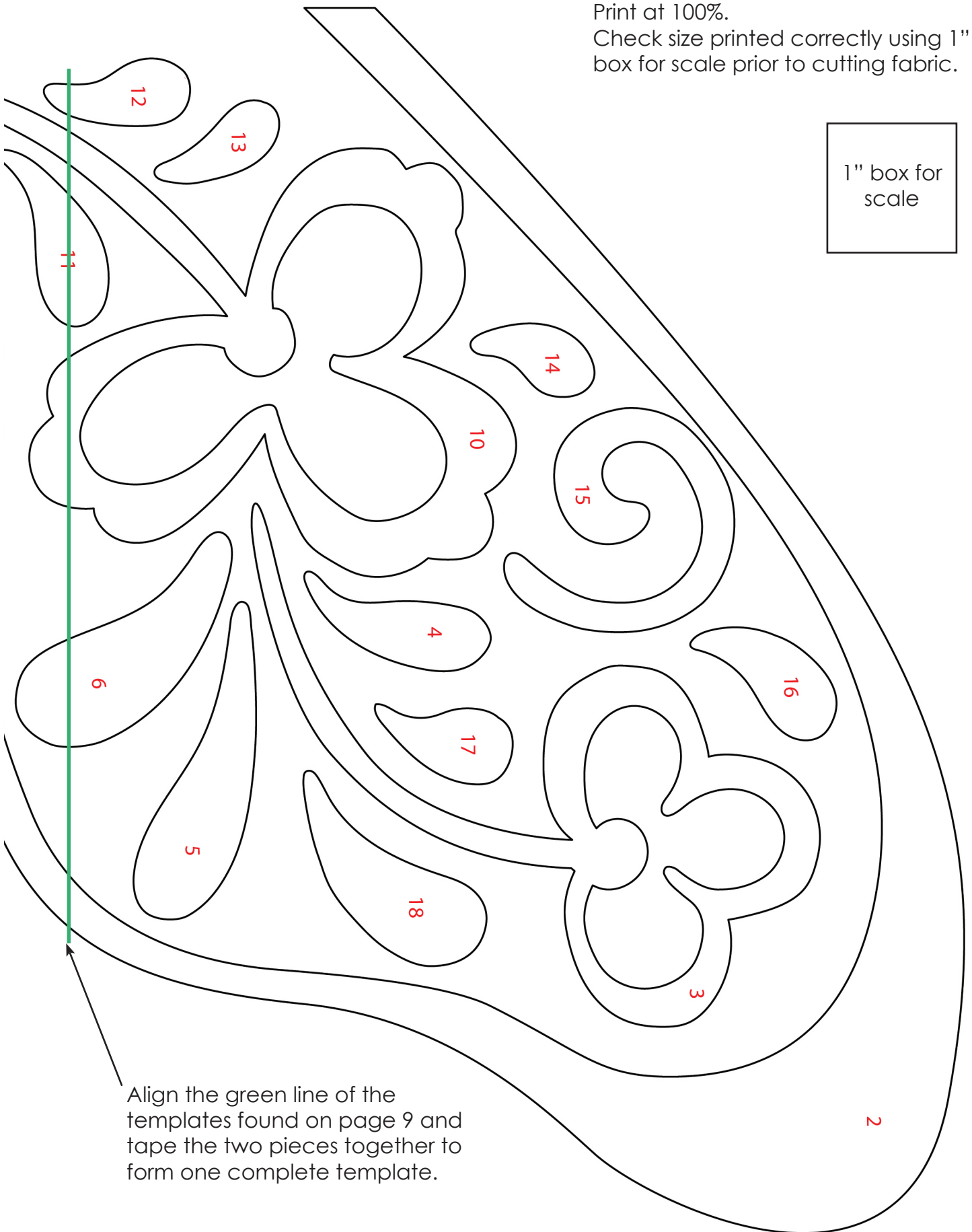
PIECES 22-30: Cut one as shown and one in reverse per butterfly.

DARK BUTTERFLY: WEL-19636-405

LIGHT BUTTERFLY: WEL-19634-370

Print at 100%.
Check size printed correctly using 1"
box for scale prior to cutting fabric.

1" box for
scale

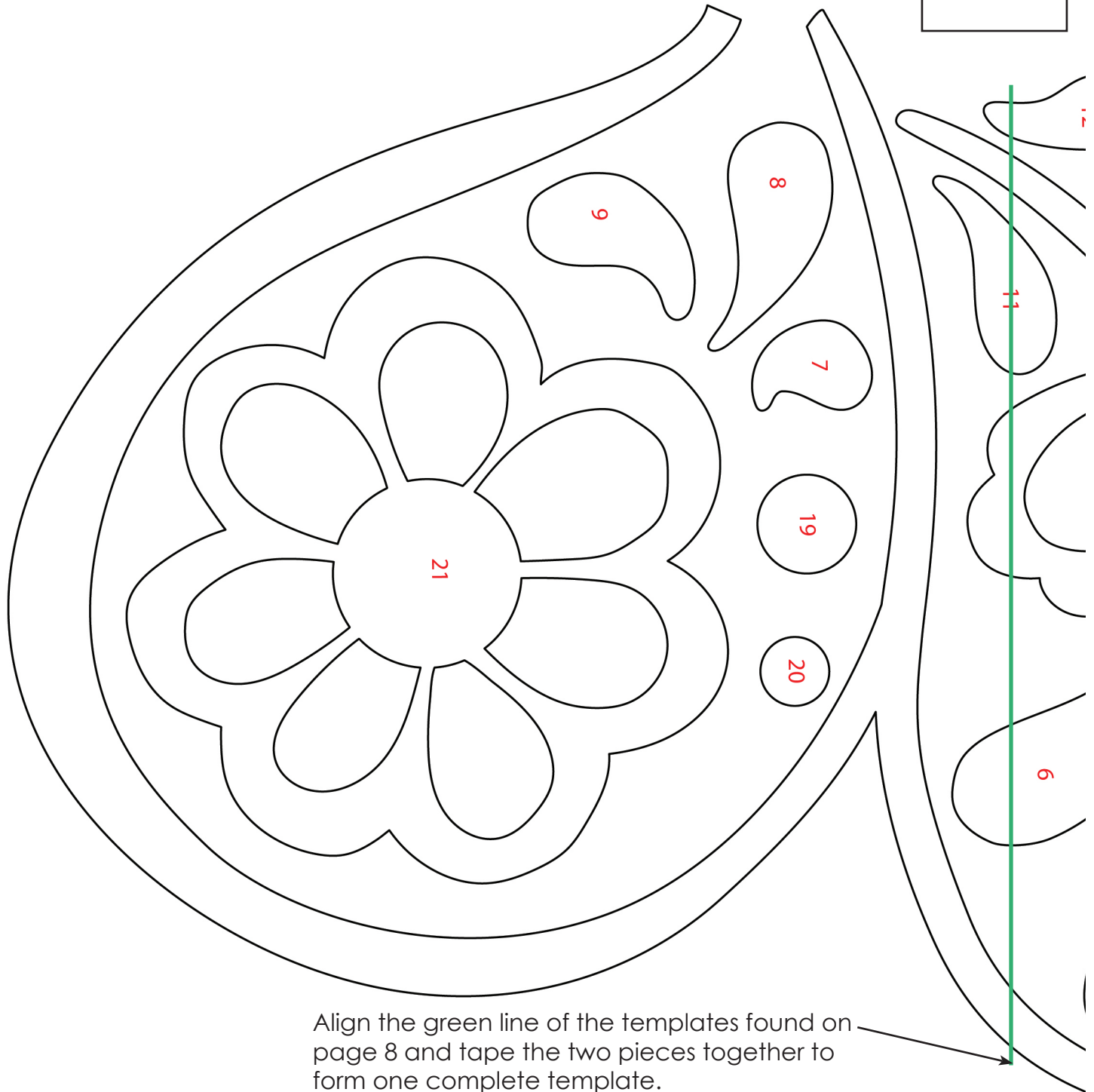


Align the green line of the
templates found on page 9 and
tape the two pieces together to
form one complete template.

Print at 100%.

Check size printed correctly using 1" box for scale prior to cutting fabric.

1" box for
scale



Align the green line of the templates found on
page 8 and tape the two pieces together to
form one complete template.