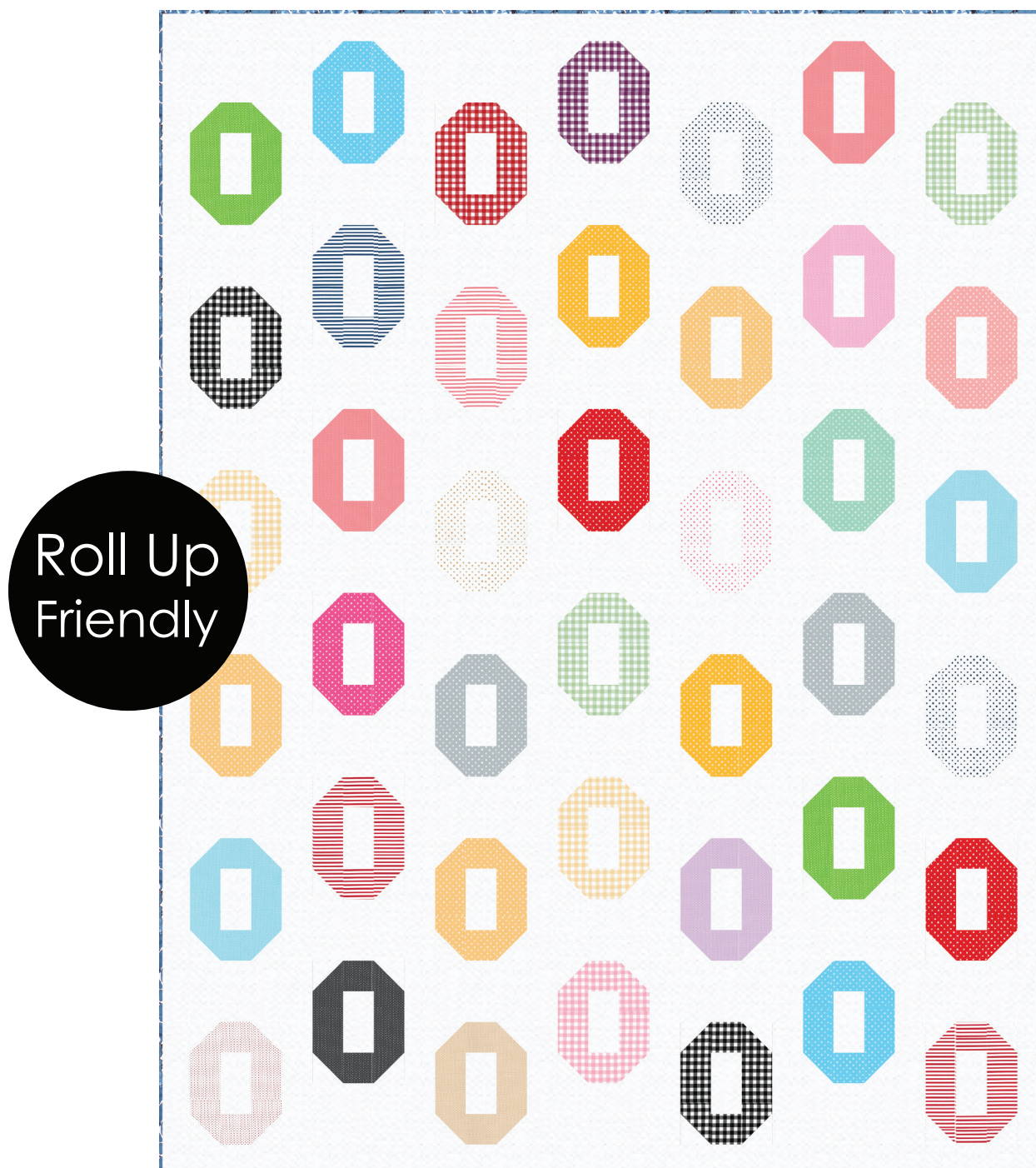


FLOATING BEADS

Designed by Ariga Wilson for RK
www.robertkaufman.com

Featuring *petite basics*
SEVENBERRY®



Finished quilt measures: 58" x 76"

Difficulty Rating: **Beginner**

ROBERTKAUFMAN
F A B R I C S

For questions about this pattern, please email Patterns@RobertKaufman.com.

Fabric and Supplies Needed

Fabric amounts based on yardage that is 42" wide.

Color	Fabric	Name/SKU	Yardage	Color	Fabric	Name/SKU	Yardage
		RU-1064-40 PETITE BASICS	One Roll-Up		Binding	SB-88190D8-4 PINK	1/2 yard
	A	K001-1387 WHITE	3-5/8 yards	<div>You will also need: 3-2/3 yards for backing</div>			
Copyright 2021, Robert Kaufman For individual use only - Not for resale							

Notes Before You Begin

- Read through all of the instructions before beginning.
- All of the seam allowances are 1/4" unless otherwise noted.
- Press seam allowances open unless otherwise noted.
- Width of fabric (WOF) is equal to at least 42" wide.
- Right sides together has been abbreviated to RST.
- Remember to measure twice and cut once!

Cutting Instructions

From each strip in the Roll Up, cut:

two 2-1/2" squares

two 2-1/2" x 8-1/2" rectangles

For a total of eighty pieces of each size.

Select two fabrics that are duplicated in the Roll-Up and cut two additional sets of the above sizes, for a total of eighty-four pieces of each size.

From Fabric A, cut:

eight 8-1/2" x WOF strips. Subcut:

forty-two 4-1/2" x 8-1/2" rectangles

forty-two 2-1/2" x 8-1/2" rectangles

twenty-three 2-1/2" x WOF strips. Subcut:
 forty-two 2-1/2" x 4-1/2" rectangles
 one hundred sixty-eight 2-1/2" squares. Mark a diagonal on the back of each square.
 Sew the remaining seven strips together, end-to-end, then trim:
 two 2-1/2" x 58-1/2" top/bottom outer borders
 two 2-1/2" x 72-1/2" side outer borders

From the Binding Fabric, cut:

seven 2-1/2" x WOF strips

Assemble the Blocks

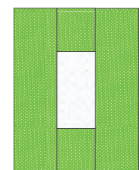
Step 1: Gather:

one 2-1/2" x 8-1/2" Fabric A rectangle
 one 4-1/2" x 8-1/2" Fabric A rectangle
 one 2-1/2" x 4-1/2" Fabric A rectangle
 four 2-1/2" Fabric A squares
 two 2-1/2" squares from one print in the Roll-Up
 two 2-1/2" x 8-1/2" rectangles from the same print in the Roll-Up

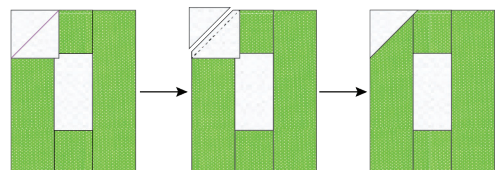
Step 2: Sew the 2-1/2" print squares to opposite ends of the 2-1/2" x 4-1/2" Fabric A rectangle. Press toward the squares.



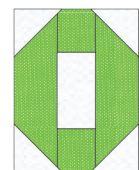
Step 3: Sew the 2-1/2" x 8-1/2" print rectangles to opposite long edges of the Step 2 unit. Press toward the print rectangles.



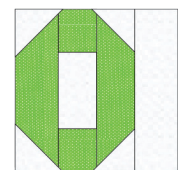
Step 4: Place a 2-1/2" Fabric A square in one corner of the completed Step 3 unit, orienting the marked diagonal as shown. Sew on the marked line. Trim the excess, leaving a 1/4" seam allowance. Press toward the corner.

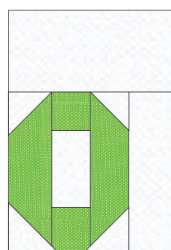


Step 5: Repeat Step 4 in all remaining corners of the unit. The block center should measure 6-1/2" x 8-1/2" at this point.

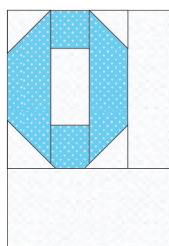


Step 6: Sew one 2-1/2" x 8-1/2" Fabric A rectangle to the right edge of the block center. Press toward the Fabric A rectangle.





make
twenty-four



make
eighteen

Step 7: Sew one 4-1/2" x 8-1/2" Fabric A rectangle to the top edge of the block center. Press toward the Fabric A rectangle.

The completed Block should measure 8-1/2" x 12-1/2". Repeat Steps 1-7 to make a total of twenty-four blocks in this style, and another eighteen blocks with the 4-1/2" x 8-1/2" rectangle sewn to the bottom edge of the unit.

Assemble the Quilt

Step 8: Arrange the blocks into six rows of seven blocks. Note the fabric placement and block orientation in the Quilt Assembly Diagram.

Step 9: Sew the blocks together to form rows. Press the rows to the left in the odd numbered rows and to the right in the even numbered rows.

Step 10: Sew the rows together to form the quilt center. Press the row seams open.

Step 11: Sew the side outer borders to the sides of the quilt center. Press toward the borders. Sew the top and bottom outer borders to the quilt center. Press toward the borders.

Your quilt top is complete! Baste, quilt, bind and enjoy!

