

FLOATING GEESE

Designed by Ariga Wilson for RK
www.robertkaufman.com

Featuring *Wishwell*

Florista

Vanessa Lillrose & Linda Fitch

Ten Square
Friendly



Finished quilt measures: 64" x 82"



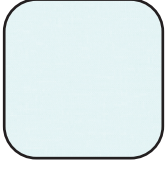
Difficulty Rating: **Beginner**

ROBERTKAUFMAN
F A B R I C S

For questions about this pattern, please email Patterns@RobertKaufman.com.

Fabric and Supplies Needed

Fabric amounts based on yardage that is 42" wide.

Color	Fabric	Name/SKU	Yardage	Color	Fabric	Name/SKU	Yardage
		TEN-1144-42 FLORISTA	Two Ten-Square Packs		Binding*	WELD-21513-17 IRIS	5/8 yard
	A	K001-1513 SKY	4-7/8 yards			<i>*Also included in the Ten Square</i>	
 Copyright 2022, Robert Kaufman For individual use only - Not for resale				You will also need: 3-1/2 yards for backing			

Notes Before You Begin

- Read through all of the instructions before beginning.
- All of the seam allowances are 1/4" unless otherwise noted.
- Press seam allowances open unless otherwise noted.
- Width of fabric (WOF) is equal to at least 42" wide.
- Right sides together has been abbreviated to RST.
- Remember to measure twice and cut once!

Cutting Instructions

From each Ten-Square, cut:

two 4-1/2" x WOF strips. Subcut
 one 4-1/2" x 8-1/2" rectangle from each strip.

From Fabric A, cut:

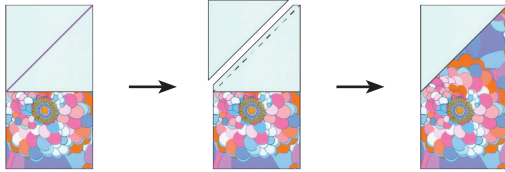
thirty-two 4-1/2" x WOF strips. Subcut:
 two-hundred and eighty 4-1/2" squares
 nineteen 1-1/2" x WOF strips. Sew together, end-to-end, then trim:
 eight 1-1/2" x 80-1/2" column sashing strips
 two 1-1/2" x 64-1/2" top/bottom borders

From the Binding Fabric, cut:

seven 2-1/2" x WOF strips.

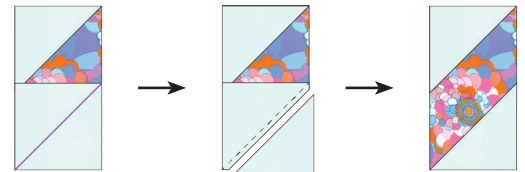
Assemble the Blocks

Step 1: Mark a diagonal line on the wrong side of each Fabric A square.



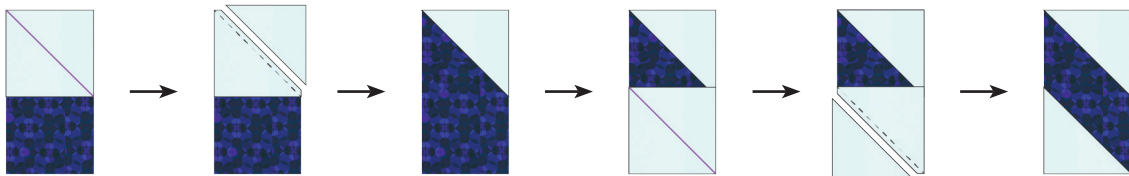
Step 2: Place a Fabric A square right sides together with a 4-1/2" x 8-1/2" rectangle (being sure the print on the Fabric C piece is right side up), aligning the top and side edges, noting the orientation of the marked line on the Fabric A square. Sew on the marked line. Trim away the excess, leaving a 1/4" seam allowance. Press toward the triangle.

Step 3: Repeat Step 2, this time placing the square on the bottom end of the rectangle, while still noting the orientation of the marked line on the square. Sew on the marked line. Trim away the excess, leaving a 1/4" seam allowance. Press toward the triangle.



Repeat to make a total of seventy units in the same orientation, from a variety of prints.

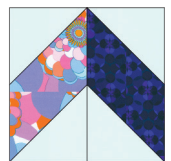
Step 4: Repeat Steps 2-3, this time orienting the marked line as shown.



Repeat to make a total of seventy units in the same orientation, from a variety of prints.

Assemble the Quilt

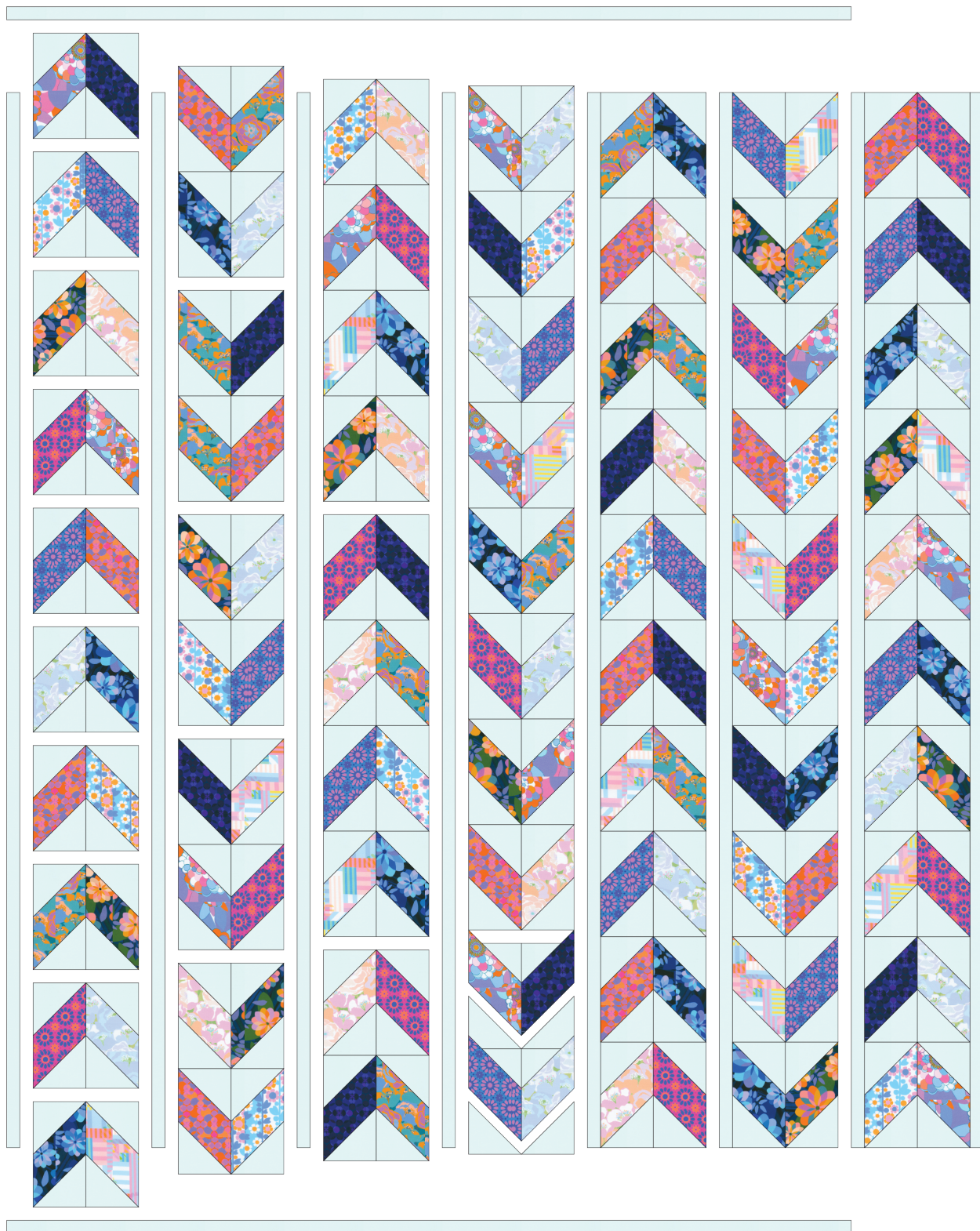
Step 5: Sew the completed units together in pairs. Use the Quilt Assembly Diagram as a reference for specific pairs, or choose random pairings of your choosing.



Step 6: Arrange the blocks into four columns of ten blocks that point "up" and three columns of ten blocks that point "down". Note the fabric placement and block orientation in the Quilt Assembly Diagram, or choose a block placement of your choice.

Step 7: Sew the blocks together to form columns. Press the seams to one side.

Step 8: Sew the columns together to form the quilt center, placing a 1-1/2" x 72-1/2" Fabric L strip between each column and at the left and right edges of the quilt center. Press toward the sashing strips.



Step 9: Sew a 1-1/2" x 55-1/2" Fabric L strip to the top and bottom edges of the quilt center. Press toward the strips.

Your quilt top is complete. Baste, quilt, bind and enjoy!

This pattern may be used for personal purposes only and may not be reproduced in any form without the express permission from Robert Kaufman Fabrics. This pattern is not for resale. All patterns, unless otherwise attributed, are © Robert Kaufman Co., Inc. 2005-2022. All rights reserved.