

# FLOATING BEADS

Designed by Ariga Mahmoudlou for RK Featuring ARTISAN  
[www.robertkaufman.com](http://www.robertkaufman.com)

By The Brook by L...



Finished quilt measures: 58" x 76"


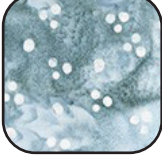
Difficulty Rating: **Beginner**

**ROBERTKAUFMAN**  
F A B R I C S

For questions about this pattern, please email [Patterns@RobertKaufman.com](mailto:Patterns@RobertKaufman.com).

# Fabric and Supplies Needed

Fabric amounts based on yardage that is 42" wide.

Color	Fabric	Name/SKU	Yardage	Color	Fabric	Name/SKU	Yardage
		RU-899-40 BY THE BROOK <i>*contains Fabrics A-T</i>	one Roll-Up		I	MD-19391-290 ASH	*included in the Roll-Up
	A	AMD-19384-268 NATURE	*included in the Roll-Up		J	AMD-19390-270 MEADOW	*included in the Roll-Up
	B	AMD-19385-169 EARTH	*included in the Roll-Up		K	AMD-19395-270 MEADOW	*included in the Roll-Up
	C	AMD-19397-268 NATURE	*included in the Roll-Up		L	MD-19393-270 MEADOW	*included in the Roll-Up
	D	AMD-19388-268 NATURE	*included in the Roll-Up		M	AMD-19394-246 WATER	*included in the Roll-Up
	E	AMD-19396-163 SPICE	*included in the Roll-Up		N	AMD-19392-246 WATER	*included in the Roll-Up
	F	AMD-19385-268 NATURE	*included in the Roll-Up		O	AMD-19387-245 MIST	*included in the Roll-Up
	G	AMD-19386-268 NATURE	*included in the Roll-Up		P	AMD-19386-246 WATER	*included in the Roll-Up
	H	AMD-19389-290 ASH	*included in the Roll-Up		Q	AMD-19385-246 WATER	*included in the Roll-Up

## Fabric and Supplies Needed

*Fabric amounts based on yardage that is 42" wide.*

Color	Fabric	Name/SKU	Yardage	Color	Fabric	Name/SKU	Yardage
	R	AMD-19384-246 WATER	*included in the Roll-Up		U	AMD-19391-290 ASH	3-5/8 yards
	S	AMD-19387-69 MIDNIGHT	*included in the Roll-Up		Binding**	AMD-19392-246 WATER <i>**Also contained in the Roll-Up</i>	1/2 yard
	T	AMD-19386-184 CHARCOAL	*included in the Roll-Up	You will also need: 3-2/3 yards for backing			

Copyright 2019, Robert Kaufman  
For individual use only - Not for resale

### Notes Before You Begin

- Read through all of the instructions before beginning.
- All of the seam allowances are 1/4" unless otherwise noted.
- Press seam allowances open unless otherwise noted.
- Width of fabric (WOF) is equal to at least 42" wide.
- Right sides together has been abbreviated to RST.
- Remember to measure twice and cut once!

### Cutting Instructions

**From each strip in the Roll Up, cut:**

- two 2-1/2" squares
  - two 2-1/2" x 8-1/2" rectangles
- For a total of eighty pieces of each size.

Select two fabrics that are duplicated in the Roll-Up and cut two additional sets of the above sizes, for a total of eighty-four pieces of each size.

**From Fabric A, cut:**

- eight 8-1/2" x WOF strips. Subcut:
  - forty-two 4-1/2" x 8-1/2" rectangles
  - forty-two 2-1/2" x 8-1/2" rectangles

twenty-three 2-1/2" x WOF strips. Subcut:  
 forty-two 2-1/2" x 4-1/2" rectangles  
 one hundred sixty-eight 2-1/2" squares. Mark a diagonal on the back of each square.  
 Sew the remaining seven strips together, end-to-end, then trim:  
 two 2-1/2" x 58-1/2" top/bottom outer borders  
 two 2-1/2" x 72-1/2" side outer borders

**From the Binding Fabric, cut:**

seven 2-1/2" x WOF strips

## Assemble the Blocks

**Step 1: Gather:**

one 2-1/2" x 8-1/2" Fabric A rectangle  
 one 4-1/2" x 8-1/2" Fabric A rectangle  
 one 2-1/2" x 4-1/2" Fabric A rectangle  
 four 2-1/2" Fabric A squares  
 two 2-1/2" squares from one print in the Roll-Up  
 two 2-1/2" x 8-1/2" rectangles from the same print in the Roll-Up

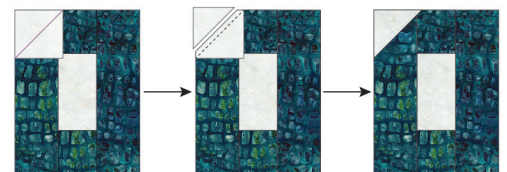
**Step 2:** Sew the 2-1/2" print squares to opposite ends of the 2-1/2" x 4-1/2" Fabric A rectangle. Press toward the squares.



**Step 3:** Sew the 2-1/2" x 8-1/2" print rectangles to opposite long edges of the Step 2 unit. Press toward the print rectangles.



**Step 4:** Place a 2-1/2" Fabric A square in one corner of the completed Step 3 unit, orienting the marked diagonal as shown. Sew on the marked line. Trim the excess, leaving a 1/4" seam allowance. Press toward the corner.



**Step 5:** Repeat Step 4 in all remaining corners of the unit. The block center should measure 6-1/2" x 8-1/2" at this point.



**Step 6:** Sew one 2-1/2" x 8-1/2" Fabric A rectangle to the right edge of the block center. Press toward the Fabric A rectangle.





**Step 7:** Sew one 4-1/2" x 8-1/2" Fabric A rectangle to the top edge of the block center. Press toward the Fabric A rectangle.

The completed Block should measure 8-1/2" x 12-1/2". Repeat Steps 1-7 to make a total of twenty-four blocks in this style, and another eighteen blocks with the 4-1/2" x 8-1/2" rectangle sewn to the bottom edge of the unit.

make  
twenty-four

make  
eighteen

## Assemble the Quilt

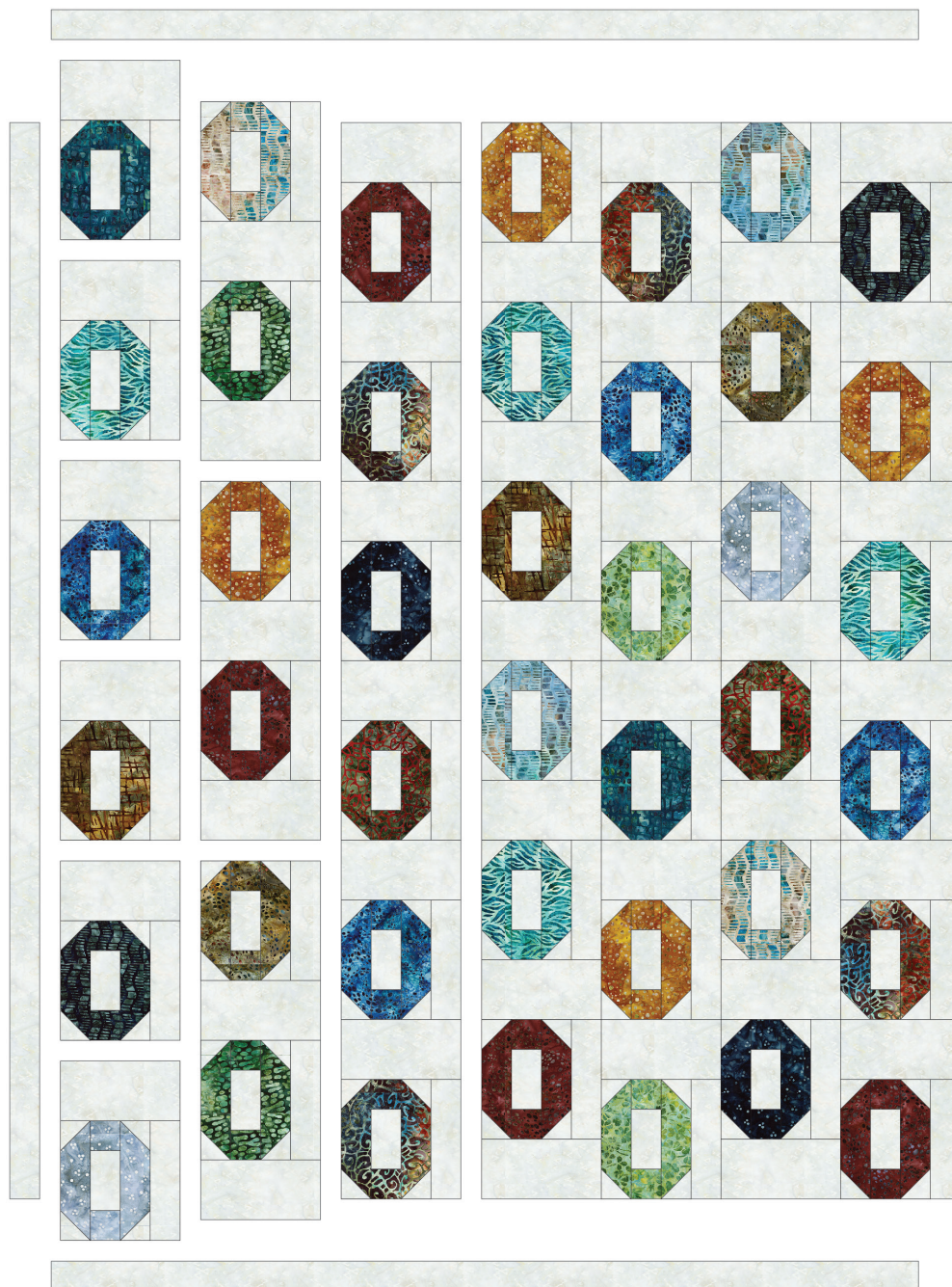
**Step 8:** Arrange the blocks into six rows of seven blocks. Note the fabric placement and block orientation in the Quilt Assembly Diagram.

**Step 9:** Sew the blocks together to form rows. Press the rows to the left in the odd numbered rows and to the right in the even numbered rows.

**Step 10:** Sew the rows together to form the quilt center. Press the row seams open.

**Step 11:** Sew the side outer borders to the sides of the quilt center. Press toward the borders. Sew the top and bottom outer borders to the quilt center. Press toward the borders.

Your quilt top is complete! Baste, quilt, bind and enjoy!



This pattern may be used for personal purposes only and may not be reproduced in any form without the express permission from Robert Kaufman Fabrics. This pattern is not for resale. All patterns, unless otherwise attributed, are © Robert Kaufman Co., Inc. 2005-2019. All rights reserved.