

# FENESTRATION

Designed by Ariga Mahmoudlou for RK Featuring  
[www.robertkaufman.com](http://www.robertkaufman.com)

## GUSTAV KLIMT



Finished quilt measures: 46" x 64"

Difficulty Rating: **Intermediate**

**ROBERTKAUFMAN**  
F A B R I C S

For questions about this pattern, please email [Patterns@RobertKaufman.com](mailto:Patterns@RobertKaufman.com).

## Fabric and Supplies Needed

*Fabric amounts based on yardage that is 42" wide.*

Color	Fabric	Name/SKU	Yardage	Color	Fabric	Name/SKU	Yardage
	A	SRKM-18655-191 AUTUMN	2/3 yard (one full panel)		E	SRKM-18657-7 GREEN	1/8 yard
	B	SRKM-18657-15 IVORY	1/3 yard		F	SRKM-18657-3 RED	1/8 yard
	C	SRKM-18657-133 GOLD	7/8 yard		G	SRKM-18657-16 BROWN	7/8 yard
	D	SRKM-18657-2 BLACK	1/4 yard		Binding*	SRKM-18657-2 BLACK <small>*Also used for Fabric D</small>	1/2 yard
<p>Copyright 2019, Robert Kaufman For individual use only - Not for resale</p>				<p>You will also need: 3 yards for backing</p>			

### Notes Before You Begin

- Read through all of the instructions before beginning.
- All of the seam allowances are 1/4" unless otherwise noted.
- Press seam allowances open unless otherwise noted.
- Width of fabric (WOF) is equal to at least 42" wide.
- Right sides together has been abbreviated to RST.
- Remember to measure twice and cut once!

## Cutting Instructions

### **From Fabric A, fussy cut:**

one 22-1/2" x 40-1/2" center panel

### **From Fabric B, cut:**

four 2-1/2" x WOF strips. Subcut:

two 2-1/2" x 26-1/2" top/bottom center panel borders

two 2-1/2" x 40-1/2" top/bottom center panel borders

### **From Fabric C, cut:**

two 4" x WOF strips. Subcut:

twenty 4" squares

six 3-1/4" x WOF strips. Subcut:

two 3-1/4" x 34-3/4" strips

two 3-1/4" x 30-1/2" strips

two 3-1/4" x 15-1/4" strips

two 3-1/4" x 19-1/2" strips

### **From Fabric D, cut:**

three 2" x WOF strips. Subcut:

two 2" x 16-3/4" strips

two 2" x 33-1/4" strips

### **From each of Fabrics E and F, cut:**

one 4" x WOF strip. Subcut:

ten 4" squares

### **From the Binding Fabric, cut:**

six 2-1/2" x WOF strips

### **From Fabric G, cut:**

five 3-1/2" x WOF strips. Sew together, end-to-end, then cut:

two 3-1/2" x 46-1/2" top/bottom outer borders

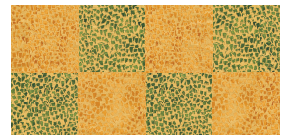
two 3-1/2" x 58-1/2" side outer borders

## Assemble the Sections

*Note: This quilt uses partial seams in some areas. Be sure to note the illustrations and where the stitching starts and stops for these seams.*

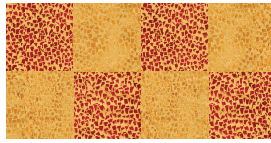
**Step 1:** Sew the Fabric B side panel borders to the Fabric A quilt center. Press. Sew the Fabric B top/bottom panel borders to the Fabric A quilt center. Press.

**Step 2:** Gather four Fabric C squares and four Fabric E squares. Sew together, as indicated, in two rows of four. Press the seams toward the darker fabric, and nest the seams before sewing the two rows together. Press.

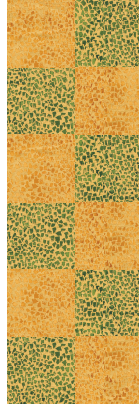




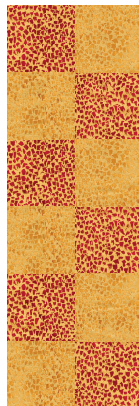
**Step 3:** Repeat Step 2, using Fabric C and Fabric F squares.



**Step 4:** Gather six Fabric C squares and six Fabric E squares. Sew together, as indicated, in two columns of six. Press the seams toward the darker fabric, and nest the seams before sewing the two columns together. Press.



**Step 5:** Repeat Step 4, using Fabric C and Fabric F squares.



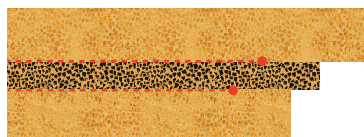
**Step 6:** Gather:

one 3-1/4" x 15-1/4" Fabric C strip

one 2" x 16-3/4" Fabric D strip

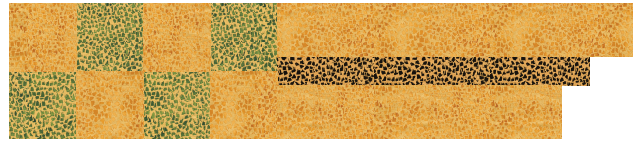
one 3-1/4" x 19-1/2" Fabric C strip

Align, as shown, at the left edge with the Fabric D strip in the center. Sew the strips together, stopping your stitches where indicated, approximately 3" before the right end of each seam. Repeat to make a second unit like this.

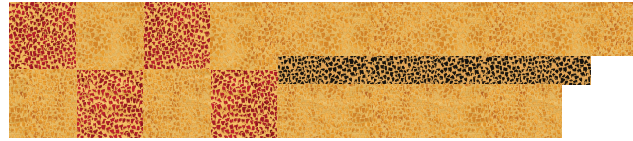




**Step 7:** Sew the completed Step 2 unit to the straight short end of one unit. Press.



**Step 8:** Sew the completed Step 3 unit to the straight short end of the remaining unit. Press.



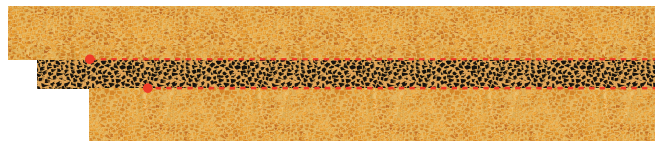
**Step 9:** Gather:

one 3-1/4" x 30-1/2" Fabric C strip

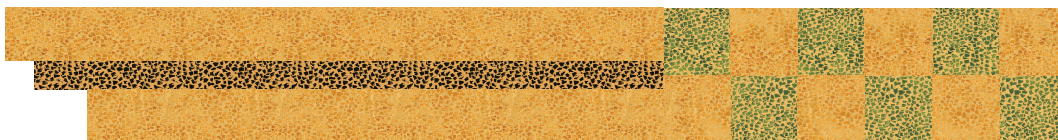
one 2" x 33-1/4" Fabric D strip

one 3-1/4" x 34-3/4" Fabric C strip

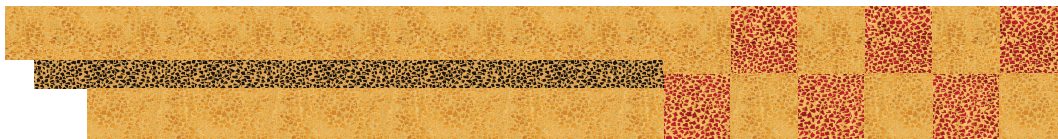
Align, as shown, at the right edge with the Fabric D strip in the center. Sew the strips together, stopping your stitches where indicated, approximately 3" before the left end of each seam. Repeat to make a second unit like this.



**Step 10:** Sew the completed Step 4 unit to the straight short end of one unit. Press.



**Step 11:** Sew the completed Step 5 unit to the straight short end of the remaining unit. Press.



## Assemble the Quilt

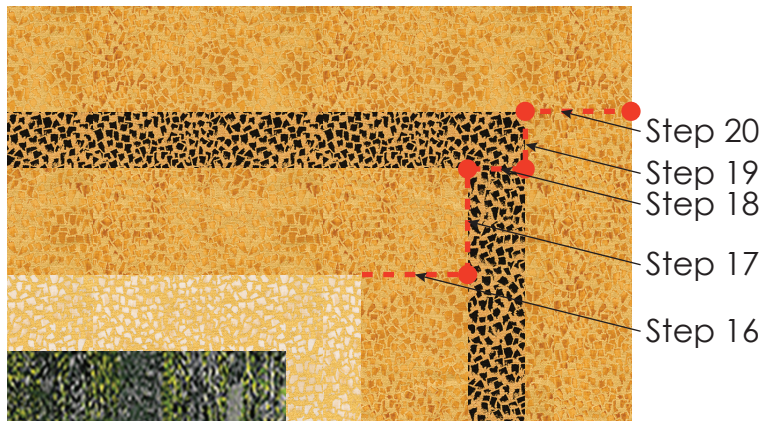


**Step 12:** Sew the completed Step 8 unit to the top of the quilt center, aligning at the left and stopping your stitches 3" from the right edge.

**Step 13:** Sew the completed Step 11 unit to the left edge of the quilt center, aligning at the top and sew all the way to the bottom edge of the quilt center.

**Step 14:** Sew the completed Step 7 unit to the bottom edge of the quilt center, aligning at the right edge and stopping your stitches 3" from the left edge of the quilt center.

**Step 15:** Sew the completed Step 10 unit to the right edge of the quilt center, aligning at the bottom edge and all the way to the top edge of the quilt center.



**Step 16:** Complete the seam for the Fabric C strip that is touching the top edge of the quilt center, sewing until you come to the end of the Fabric C strip touching the right edge of the quilt center.

**Step 17:** Complete the seam for the Fabric D strip that is part of the right quilt border.

**Step 18:** Complete the seam for the Fabric D strip that is part of the top quilt border.

**Step 19:** Complete the seam for the outer Fabric C strip that is part of the right quilt border.

**Step 20:** Complete the seam for the outer Fabric C strip that is part of the top quilt border.

**Step 21:** Repeat the process from Steps 16-20 in the opposite corner of the quilt to complete all of the remaining partial seams.

**Step 22:** Sew the Fabric G side outer borders to the quilt center. Press. Sew the Fabric G top/bottom outer borders to the quilt center. Press.

Your quilt top is complete. Baste, quilt, bind and enjoy!