

Feline Funnies

Designed by Ramona Rose
www.ramonarose.net

Featuring
Divas and Tough Guys





Finished Pillow measures: 22" x 22"

Pattern Level: Confident Beginner

*"I have basic block construction down
and would like to learn a new trick!"*

ROBERT KAUFMAN
F A B R I C S

Fabric and Supplies Needed

Color	Fabric	Name/SKU	Yardage	Color	Fabric	Name/SKU	Yardage
	A	AVT-14746-205 MULTI	2/3 yard		F	K001-1019 BLACK	1/2 yard
<p style="color: red; margin: 0;">For individual use only - Not for resale</p> <p style="margin: 0;">Copyright 2014, Robert Kaufman</p>				<p style="margin: 0;">You will also need: 22" x 22" piece of Batting 22" x 22" piece of muslin or cotton fabric</p>			

Notes Before You Begin

- Please read through all of the instructions before beginning.
- All of the seam allowances are 1/4" unless otherwise noted.
- Width of fabric (WOF) is equal to at least 42" wide.
- Remember to measure twice and cut once!

Cutting Instructions

Fabric A

- Fussycut a square measuring about 22" x 22" around four cats and their borders.

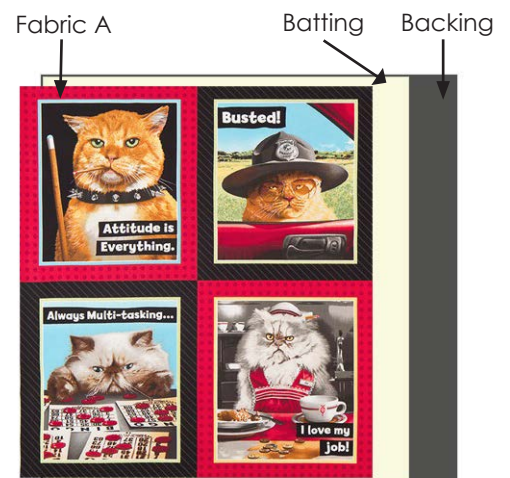
Fabric B

- Cut two rectangles 15" x 22".

Assembly Instructions

Step 1: Quilt Pillow Front

- Layer the muslin backing, batting and Fabric A and lightly quilt the three layers together (the sample was stitched with straight lines in the white border around each cat picture).
- Trim the excess backing and batting to complete Pillow Front.

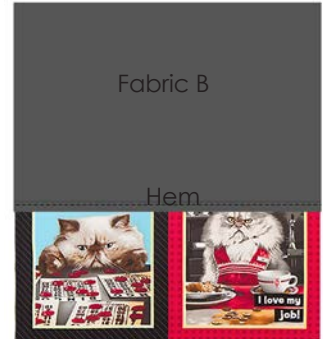


Step 2: Hem Pillow Back Pieces

- Fold the long edge of a Fabric B rectangle over 1/4" and then again 1/2" to encase the raw edge. Topstitch along the fold to hem.
- Repeat to hem remaining Fabric B rectangle.

Step 3: Assemble Front and Back

- Place the Pillow Front face up. Next, place a Fabric B rectangle right side down, aligned with the top edge of the Pillow Front with the hemmed edge at the bottom.



- Place the remaining Fabric B rectangle aligned with the bottom edge of the Pillow Front with the hemmed edge at the top. Pin both Fabric B rectangles in place around the perimeter of the Pillow Front.

- Sew with a 1/4" seam allowance all the way around the Pillow Front, trim off the extra pillow back fabric, then zig-zag or serge the raw edges.



Turn right side out through the back opening, poke out the corners with a knitting needle or unsharpened pencil, fill with a 22" pillow form and enjoy!