

EXUBERANCE

Designed by Robert Kaufman Fabrics
www.robertkaufman.com

Featuring
LUMINA
BY Peggy Toole



Finished quilt measures: 70" x 88"

Quilt shown in "DAWN" colorstory. For alternate colorstories see pages 14-15.

Pattern Level: Experienced Intermediate


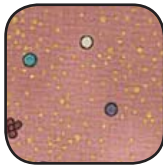







"I know the ropes and would like to test my skills!"

ROBERTKAUFMAN
F A B R I C S

For questions about this pattern, please email Patterns@RobertKaufman.com.

Fabric and Supplies Needed

Fabric amounts based on yardage that is 44" wide.

Color	Fabric	Name/SKU	Yardage	Color	Fabric	Name/SKU	Yardage
	A	APTM-15915-208 DAWN	3/4 yard		F	APTM-15919-208 DAWN	1/2 yard
	B	APTM-15916-184 CHARCOAL	2 yards		G	SRKM-14476-12 GREY	1/2 yard
	C	APTM-15919-14 NATURAL	1-1/8 yards		H	APTM-15916-208 DAWN	5/8 yard
	D	ETJ-9864-233 BERRY	1-1/8 yards		I	APTM-15918-208 DAWN <i>*includes binding</i>	1-3/4 yards
	E	APTM-15917-208 DAWN	7/8 yard	<div>You will also need: 5-1/2 yards for backing</div>			
Copyright 2016, Robert Kaufman For individual use only - Not for resale							

Pattern Notes

- Read through all of the instructions before beginning.
- All of the seam allowances are 1/4" unless otherwise noted.
- Press seam allowances to the darker fabric.
- Width of fabric (WOF) is equal to at least 44" wide.
- Right sides together has been abbreviated to RST.
- Remember to measure twice and cut once!
- Half-square triangle has been abbreviated to HST.
- Square-in-a-square has been abbreviated to SIAS.
- Half-rectangle triangle has been abbreviated to HRT.

Cutting Instructions

From Fabric A, cut:

- Fussy cut one medallion 15-1/2" square
- Fussy cut two half medallions 7-1/2" x 15-1/2"
- Fussy cut two square-in-a-square centers at 5-1/2" square (fussy cut section can be any interesting part of the leftover fabric)

From Fabric B, cut:

- two strips 2" x WOF. Subcut:
 - two strips 2" x 15-1/2"
 - two strips 2" x 18-1/2"
- two strips 2-1/2" x WOF, set aside for strip piecing
- one strip 3-1/2" x WOF. Subcut:
 - four pieces 3-1/2" x 6-1/2"
- five strips 4-1/2" x WOF. Subcut:
 - sixteen 4-1/2" squares, cut four once on the diagonal for SIAS blocks
 - two strips 4-1/2" x 18-1/2"
 - four strips 4-1/2" x 7-1/2"
 - four strips 4-1/2" x 13-1/2"
- one strip 6-1/2" x WOF. Subcut:
 - two and two reversed 4-1/2 x 6-1/2 HRT template
 - four 6-1/2" triangle templates
 - eight 2-1/2" squares from the remaining fabric
- one strip 7" x WOF. Subcut:
 - two 7" squares
- one strip 7-1/2" x WOF. Subcut:
 - four pieces 7-1/2" x 9"
- one strip 8-1/2" x WOF. Subcut:
 - two and two reversed 4-1/2 x 8-1/2 HRT template
 - two and two reversed 5 x 7-1/2 HRT template
 - two 8" squares from the remaining fabric

From Fabric C, cut:

- five strips 2-1/2" x WOF
 - Set two aside for strip piecing
 - Sub cut eight strips 2-1/2" x 6-1/2"
 - Sub cut eight strips 2-1/2" x 4-1/2"
- three strips 4-1/2" x WOF. Subcut:
 - four pieces 4-1/2" x 3-1/2" & four 4-1/2" squares from one strip
 - eight 4-1/2" x 6-1/2" pieces from two strips
- one strip 6-1/2" x WOF. Subcut:
 - four and four reversed 6-1/2" half-triangle templates

From Fabric D, cut:

- five strips 2" x WOF
 - Cut one in half widthwise and use two & a half strips to make each inner border
- one strip 2-1/2" x WOF. Subcut:
 - four 2-1/2" squares
 - two 2-1/2" x 4-1/2" pieces
- one strip 4-1/2" x WOF. Subcut:
 - two 4-1/2" x 8-1/2" pieces for flying geese
 - two 4" squares for HSTs
- two strips 5" x WOF. Subcut:
 - twelve squares 5" x 5"
- one strip 8" x WOF. Subcut:
 - two 8" squares
 - two 7" squares

From Fabric E, cut:

- two strips 5" x WOF. Subcut:
 - twelve squares 5" x 5"
- one strip 7" x WOF. Subcut:
 - two 7" squares
 - two 4-1/2" x 8-1/2" pieces for flying geese
 - two 4" squares for HSTs
- one strip 10-1/2" x WOF. Subcut:
 - two 10-1/2" squares
 - one 8" square

From Fabric F, cut:

- one strip 3-1/2" x WOF. Subcut:
 - eight pieces 3-1/2" x 4-1/2"
- one strip 8-1/2" x WOF. Subcut:
 - four 4-1/2 x 8-1/2 HRT template
 - two AND two reversed 4-1/2 x 6-1/2 HRT template
 - two 8" squares

From Fabric G, cut:

- one strip 3-1/2" x WOF. Subcut:
 - eight pieces 3-1/2" x 4-1/2"
- one strip 8-1/2" x WOF. Subcut:
 - four reversed 4-1/2 x 8-1/2 HRT template
 - two 8" squares

From Fabric H, cut:

- one strip 8-1/2" x WOF. Subcut:
 - two AND two reversed 4-1/2 x 8-1/2 HRT template
 - two 8" squares
 - two AND two reversed 5 x 7-1/2 HRT template
- one strip 4-1/2" x WOF. Subcut:
 - four 4-1/2" squares

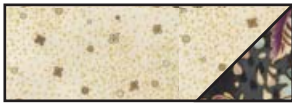
From Fabric I, cut:

- five strips 7" x WOF
 - Cut one in half widthwise and use two & a half strips to make each outer border
- Cut 322" of bias binding

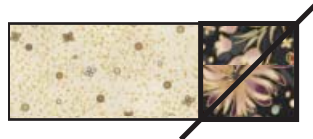
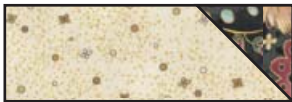
Assemble the Center Medallion



Sew the Fabric B 2" x 15-1/2" strips to either side of the fussy cut Fabric A medallion. Then sew the 2" x 18-1/2" Fabric B strips to the top and bottom.



Sew a Fabric B 2-1/2" square to a Fabric C 2-1/2" x 6-1/2" strip by sewing along a diagonal. Make four of each shown in diagram.



Sew a Fabric B 4-1/2" square to a Fabric C 2-1/2" x 4-1/2" strip. Make eight.



Using the two units above, make four of each block shown.



Sew a 6-1/2" Fabric C half-triangle to two sides of a 6-1/2" Fabric B triangle. Make four Fabric BC triangle blocks.

Make two Fabric DE HSTs using the 8" squares. Draw a diagonal line on the back of the lighter squares. Sew 1/4" away one each side of the marked line. Cut along the line and trim to 7" square. Mark a diagonal on the back of each Fabric B 7" square and place on each HST unit, placing the marked line perpendicular to the seam on the HST. Sew as you would for a HST block. Make four Fabric BDE blocks. Trim to 6-1/2" square. Mark a Fabric D 2-1/2" square along the diagonal and sew at the Fabric B corner to complete the block.



Make four Fabric DE HSTs using the 7" squares. Trim to 6-1/2" square.
 Make twenty-four Fabric DE HSTs using the 5" squares. Trim to 4-1/2" square.
 Make four Fabric DE HSTs using the 4" squares. Trim to 3-1/2" square.



Use a Fabric D 4-1/2" x 8-1/2" rectangle and two Fabric H 4-1/2" squares to make a flying geese block: place a square at one end of the rectangle and sew along the diagonal. Trim, leaving a 1/4" seam allowance and press away from the rectangle. Repeat with the remaining square at the opposite end of the rectangle. Make two flying geese blocks. Repeat with the Fabrics B squares and E rectangle.



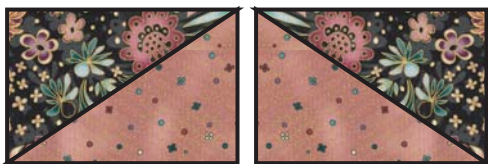
Using the 8" squares, make two HSTs, each, of Fabric BF, Fabric BG, Fabric GH, and Fabric FH. Trim to 7-1/2" square.



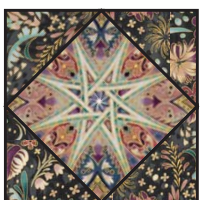
Using pieces cut from the HRT template, make two HRTs of each Fabric GH, Fabric BF, Fabric BG, and Fabric FH. Trim to 4-1/2" x 8-1/2".



Make two of each HRT orientation pictured from Fabrics B and H. Trim to 5" x 7-1/2".



Make two of each HRT orientation pictured from Fabrics B and F. Trim to 4-1/2" x 6-1/2".



Make two Fabric AB SIAS blocks using the fussy cut Fabric A 5-1/2" squares and the Fabric B 4-1/2" triangles. Sew two triangles to opposite sides of the square. Press away from the square. Then sew remaining triangles to the two remaining sides, again pressing away. Trim to 7-1/2" square. **Fussy cut section can be either a medallion center, a flower motif from between medallions, or any other interesting section of Fabric A left after cutting the medallion and half medallions.



Piece together the Fabrics B & C 2-1/2" x WOF strips alternating BCBC. Cut four units 10-1/2" wide.



Using the units previously pieced, sew together as pictured. Make four.

Sew a Fabric BDE block to either side, noting the orientation of the blocks. Make two.



Attach to complete the medallion center.



Assemble the Borders

Use a Fabric BE flying geese, a Fabric BF HRT, a Fabric BG HRT, and one each of the 3-1/2" x 4-1/2" Fabric F & G pieces to make the section illustrated. Make two. Attach to the top/bottom of medallion center - geese pointing outward. Refer to the Quilt Assembly Diagram if necessary.

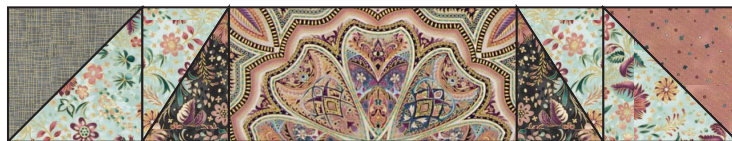


Use a Fabric DH flying geese block, a Fabric FH HRT, a Fabric GH HRT, one each of the 3-1/2" x 4-1/2" Fabric F & G pieces and two 4-1/2" Fabric DE HSTs to make the section illustrated. Make two. Attach to either side of the medallion center - geese pointing outward. Refer to the Quilt Assembly Diagram if necessary.



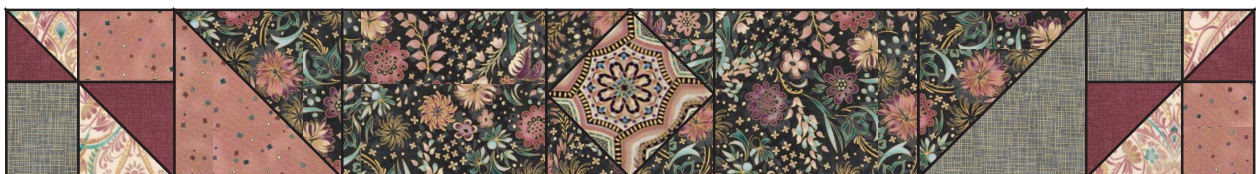
Sew a Fabric BH HRT to either side of a fussy cut half-medallion so that Fabric B is next to Fabric A. Sew a Fabric GH HST to the left side and a Fabric FH HST to the right side following the diagram.

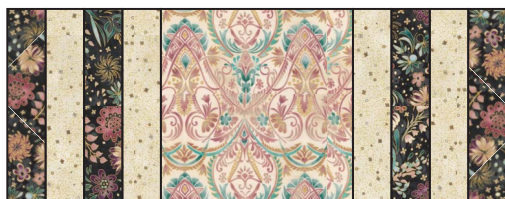
Make two, making sure the medallion is facing the same way in each unit. Add this section to either side of the center section. Refer to the Quilt Assembly Diagram, if necessary.



Using a 3-1/2" x 4-1/2" piece of Fabrics F & G, a 3-1/2" Fabric DE HST, and a 4-1/2" Fabric DE HST make two of each block pictured. *Note the rotation of the HST from block to block.*

Using one of each block from the last step, one Fabric BF 7-1/2" HST, two Fabric B 7-1/2" x 9" pieces, one SIAS block, and one Fabric BG 7-1/2" HST make a section following the diagram. Make two.





Sew the Fabric BC 10-1/2" units to either side of a Fabric E 10-1/2" square to make a Center Column unit following the diagram. Make two.



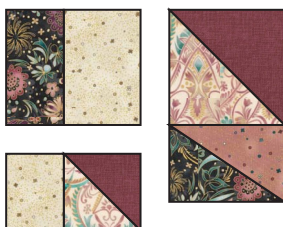
Sew a Fabric B 3-1/2" x 6-1/2" piece to a Fabric C 4-1/2" x 6-1/2" piece. Make four.



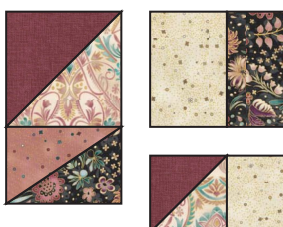
Sew a Fabric C 3-1/2" x 4-1/2" piece to a Fabric DE 4-1/2" HST. Make two of each pictured, noting the orientation of the HST block.



Sew a Fabric DE 6-1/2" HST to a 4-1/2" x 6-1/2" Fabric BF HRT. Make two of each pictured.



Sew the Fabric BC rectangles to the Fabric C + DE HST unit, then attach a unit from the above step to make a Left Column unit. Make two.



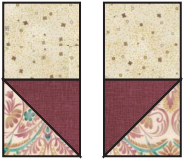
Repeat the steps above to make a Right Column unit following the diagram. Make two.



Attach a Left Column unit to the left of the Center Column unit and a Right Column unit to the right of the Center Column unit. Make two.



Sew four Fabric DE 4-1/2" HSTs and one Fabric D 2-1/2" x 4-1/2" together following the diagram. Attach a Fabric B 4-1/2" x 18-1/2" piece to the bottom. Make two.



Sew a Fabric DE 4-1/2" HST to a Fabric C 4-1/2" square. Make two of each pictured, noting the orientation of the HST blocks.



Sew a Fabric B 4-1/2" x 7-1/2" piece to a Fabric C 4-1/2" x 6-1/2" piece. Make four.



Sew a Fabric B 4-1/2" x 13-1/2" piece to the BC unit from the last step. Make two of each pictured.



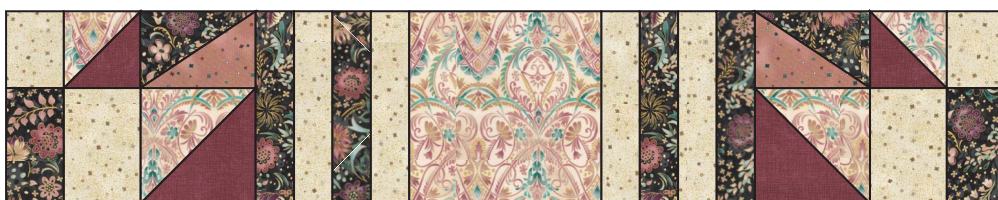
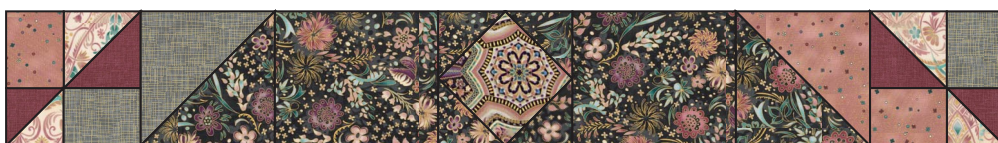
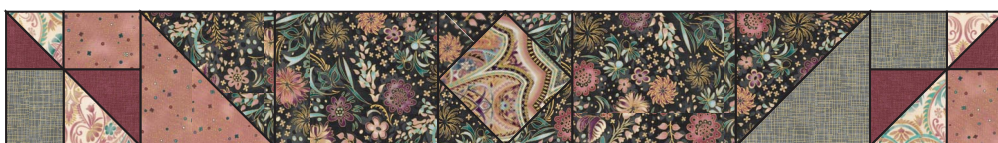
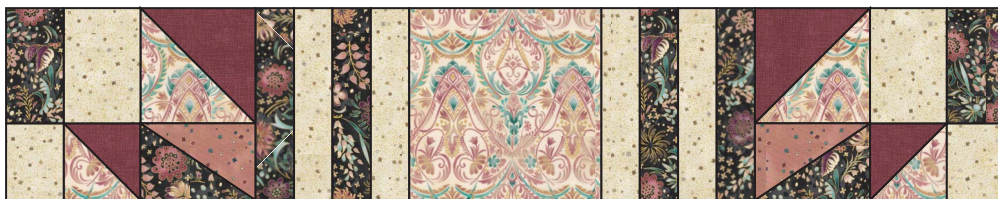
Sew a Fabric C + DE HST unit to one side of a unit from the last step following the diagram. Make two of each pictured.

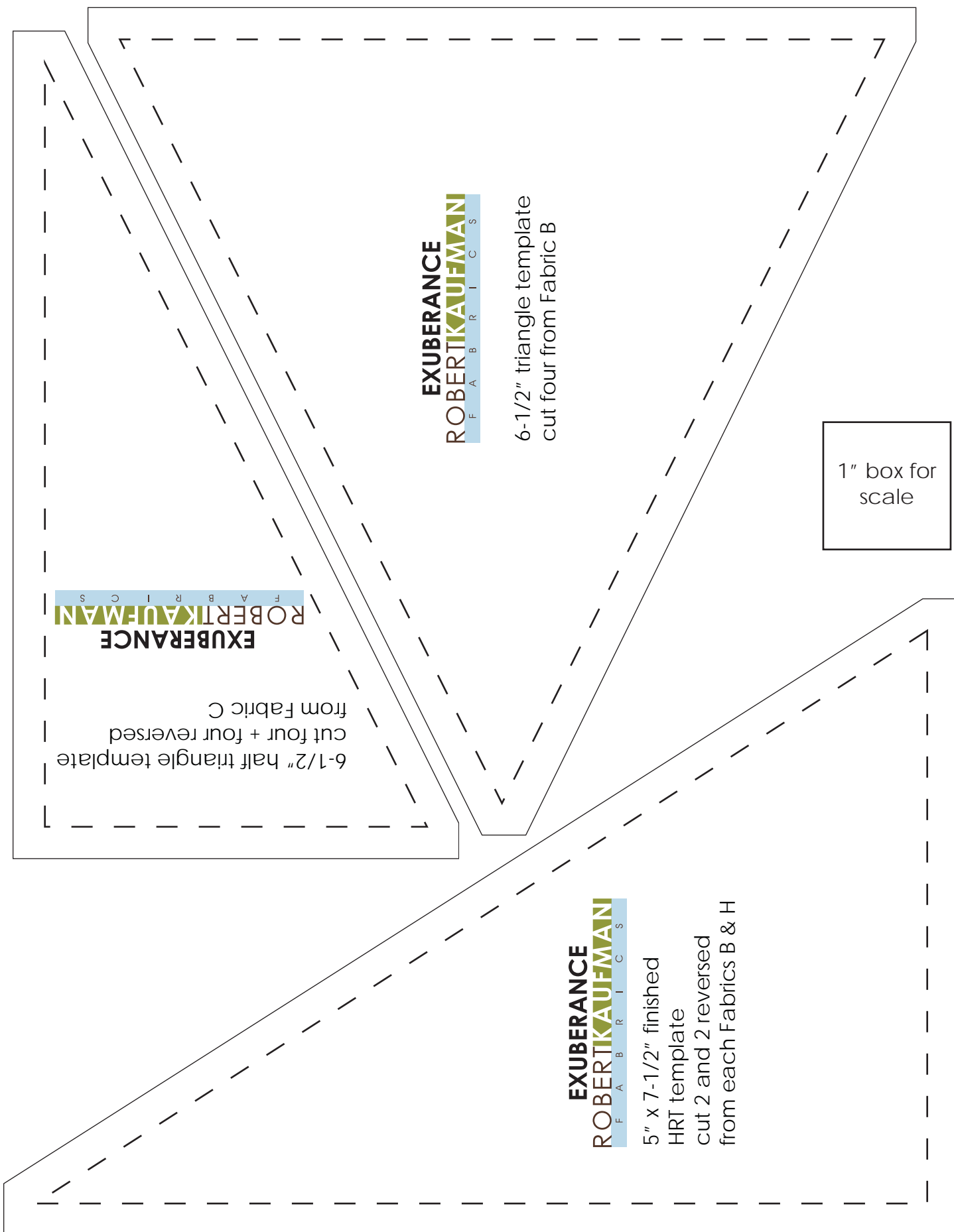


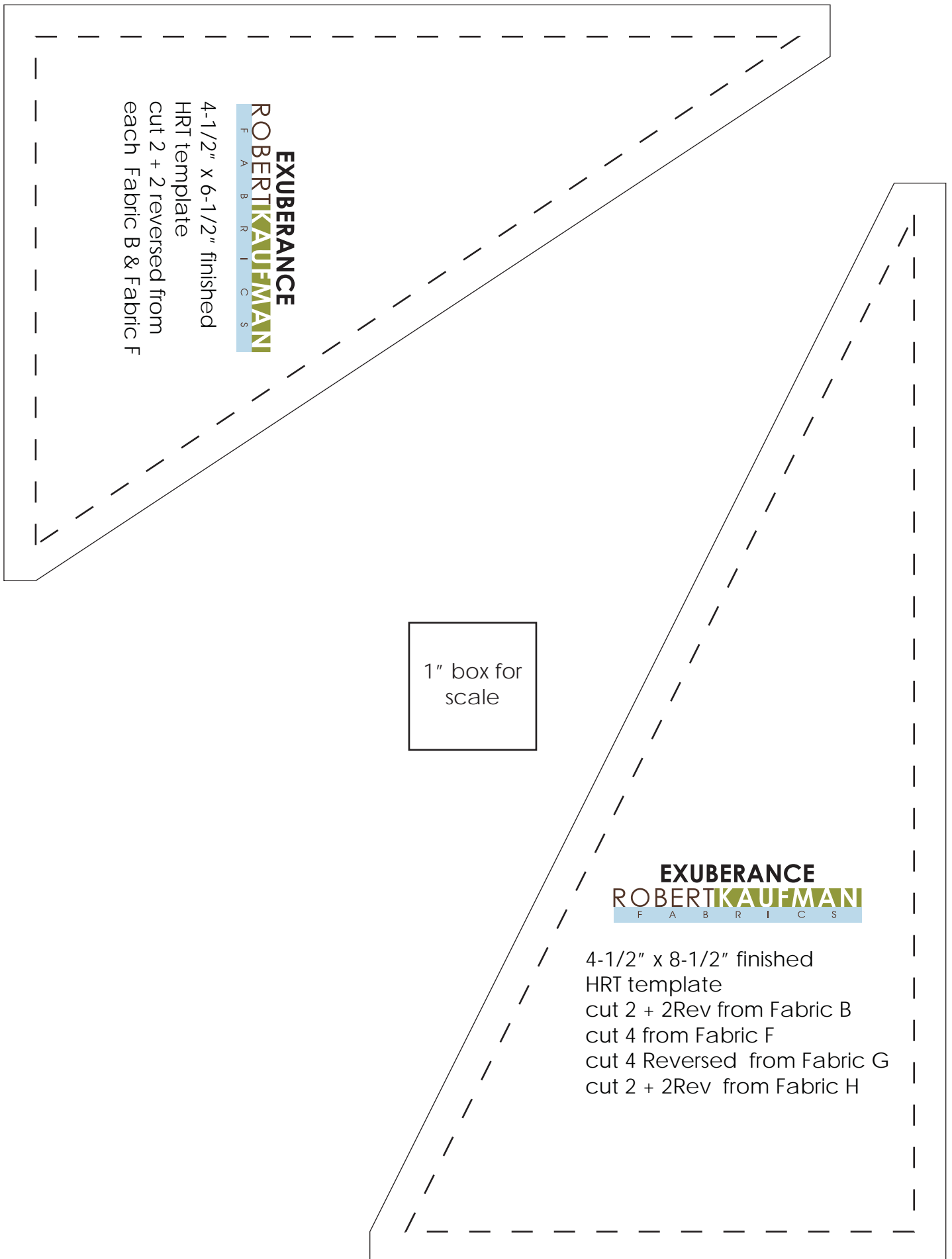
Sew three units together according to the diagram. Make two. Sew the quilt together following the Quilt Assembly Diagram.

Attach the Fabric D inner border on either side of the quilt. Attach the Fabric I outer border to either side of the quilt.

Your quilt top is now complete. Baste, quilt, bind and enjoy!







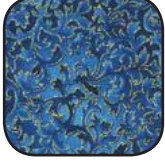









EXUBERANCE - Jewel Colorstory

Fabric and Supplies Needed




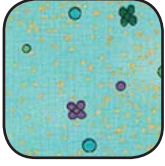
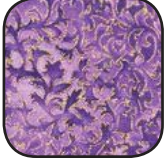





Fabric amounts based on yardage that is 44" wide.

Color	Fabric	Name/SKU	Yardage	Color	Fabric	Name/SKU	Yardage
	A	APTM-15915-201 JEWEL	3/4 yard		I	APTM-15918-201 JEWEL <i>*includes binding</i>	1-3/4 yards
	B	APTM-15916-2 BLACK	2 yards	Copyright 2016, Robert Kaufman For individual use only - Not for resale			
	C	EYJM-6644-199 ANTIQUE	1-1/8 yards	You will also need: 5-1/2 yards for backing			
	D	EYJM-6644-78 PEACOCK	1-1/8 yards				
	E	APTM-15917-201 JEWEL	7/8 yard				
	F	SRKM-13694-105 GARNET	1/2 yard				
	G	APTM-15919-3 RED	1/2 yard				
	H	APTM-15916-201 JEWEL	5/8 yard				

EXUBERANCE - Peacock Colorstory

Fabric and Supplies Needed

Fabric amounts based on yardage that is 44" wide.

Color	Fabric	Name/SKU	Yardage	Color	Fabric	Name/SKU	Yardage
	A	APTM-15915-78 PEACOCK	3/4 yard		I	APTM-15918-78 PEACOCK <i>*includes binding</i>	1-3/4 yards
	B	APTM-15916-78 PEACOCK	2 yards	Copyright 2016, Robert Kaufman For individual use only - Not for resale			
	C	APTM-15919-70 AQUA	1-1/8 yards	You will also need: 5-1/2 yards for backing			
	D	EYJM-6644-20 AMETHYST	1-1/8 yards				
	E	APTM-15917-78 PEACOCK	7/8 yard				
	F	SRKM-13694-213 TEAL	1/2 yard				
	G	APTM-15919-78 PEACOCK	1/2 yard				
	H	APTM-15916-70 AQUA	5/8 yard				