

# Enchanted Navigation

Designed by Robert Kaufman Fabrics

Featuring *Enchanted Pines*  
McKenna Ryan



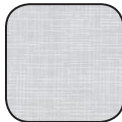











Finished project measures 57" x 71"

**Pattern Level: Advanced Expert**

*"My skills are sharp, so I'm ready to  
take on the hard stuff."*

**ROBERT KAUFMAN**  
F A B R I C S

## Fabric and Supplies Needed

Color	Fabric	Name/SKU	Yardage	Color	Fabric	Name/SKU	Yardage
	A	ETJ-9864-187 PLATINUM	2 yards		H	AYC-15469-253 BOYSENBERRY	1-1/8 yard
	B	AYC-15465-277 WINTER	5/8 yard		I	AYC-15470-4 BLUE	1/8 yard
	C	AYC-15465-312 STARRY NIGHT	1 yard		J	AYC-15470-208 DAWN	1/4 yard
	D	AYC-15466-73 LAKE	1-5/8 yard		K	AYC-15474-69 MIDNIGHT	1/4 yard
	E	AYC-15467-24 PLUM	3/8 yard		L	AYC-15474-253 BOYSENBERRY	1/4 yard
	F	AYC-15468-245 MIST	3/4 yard	<p>You will also need:                      5 yards Backing Fabric                      1/2 yard Binding Fabric                      65" X 79" Sized Quilt Batting                      8-1/2" x 14" paper</p>			
	G	AYC-15469-40 EMERALD	3/4 yard				

## Notes Before You Begin

- Please read through all of the instructions before beginning.
- All of the seam allowances are 1/4" unless otherwise noted.
- Press seam allowances open unless otherwise noted.
- Width of fabric (WOF) is equal to at least 42" wide.
- Remember to measure twice and cut once!

### Printing the Templates

- *Print all of the templates on 8-1/2" x 14" paper. Printer must be set to print at 100%. Print a test page and measure the 1" square to check the size.*
- **Templates A-F:** Print one copy of pages 7 and 8. Cut out around gray seam allowance lines.
- **Background Template:** Print one copy of pages 9 and 10. Cut pieces out and tape together along the dashed lines and the red lines.
- **Border 2 and Border 4 Blocks:** Print twelve copies each of pages 11 and 12. Cut out along the gray seam allowance lines.

## Cutting Instructions

### Fabric A

- Cut six strips 4-1/2" x WOF, then subcut forty-eight squares 4-1/2" x 4-1/2".
  - Cut each square once on the diagonal, from corner to corner (Border 2).
- Cut seven strips 3-1/2" x WOF, then subcut forty-eight rectangles 3-1/2" x 6" (Border 4).
- Cut four copies of the Background Template. Make a 1/4" tick mark where the center line meets the inner curve.

### Fabric B

- Cut four strips 5-1/2" x WOF, then subcut twenty-four squares 5-1/2" x 5-1/2" (Border 4).

### Fabric C

- Cut eight strips 4" x WOF, then subcut forty-eight rectangles 4" x 6-1/2" (Border 2).

### Fabric D

- Fussycut two strips **lengthwise** 8-1/2" x 58" (Border 3).

### Fabric E (Cut this **after** you complete the center medallion)

- Cut four strips 3" x WOF (Border 1).

### Fabric F

- Cut sixteen copies of Template C.

### Fabric G

- Cut two strips 6-1/2 x WOF (Border 3).

### Fabric H

- Cut eight copies of Template B.

### Fabric I

- Cut four copies of Template D1. Mark the red tick mark.
- Cut four copies of Template D2. Mark the red tick mark.

### Fabric J

- Cut one square 7" x 7", fold into quarters and then cut one Template A, lining up the template with folds.

### Fabric K

- Cut four copies of Template E. Mark the red tick marks.

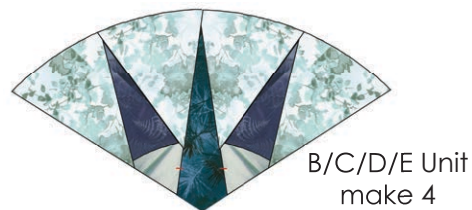
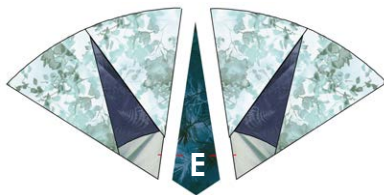
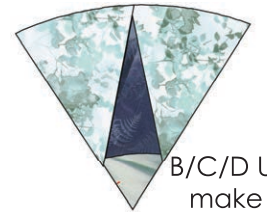
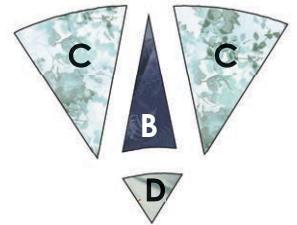
### Fabric L

- Cut four copies of Template F.



## Step 1: Assemble the Center Medallion

1. Sew the curved edge of piece D to the curved edge of piece B.  
Press seams toward B.
2. Sew a piece C to either side of the B/D unit, as pictured.  
Press seams toward C.
3. Repeat 1 & 2 to make eight B/C/D units. *Note that piece D will have the tick mark on the left side on four units and on the right side on four units.*
4. Sew a B/C/D unit to each long side of a piece E, matching the tick marks.
5. Repeat to make four B/C/D/E units.



6. Sew a piece F to the right edge of the B/C/D/E unit.  
Press seams toward F.
7. Repeat to make four B/C/D/E/F units.

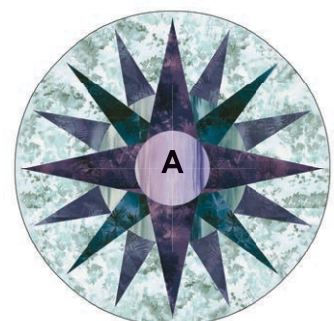


B/C/D/E/F Unit  
make 4

8. Working clockwise around the circle, sew the B/C/D/E/F units together, as pictured.



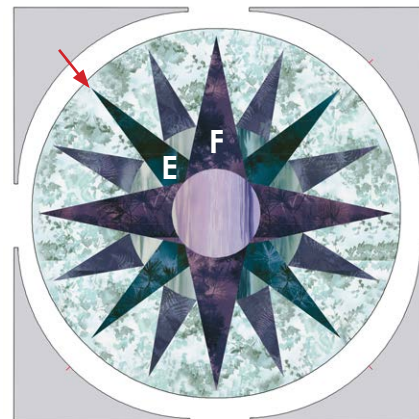
9. Matching right sides together, sew the piece A circle into the center of the medallion.



## Step 2: Sew Background to Center Medallion

1. Sew the Background pieces to the center medallion. Press seams toward background.

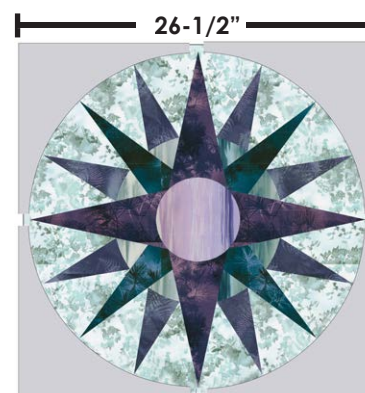
*You will match the tick mark on the center of the background piece with the piece E point and then ease the curve towards the piece F point. The background will not match up with the piece F point, but do not sew the background past that point.*



2. Once the background pieces are sewn to the center, true up the edges so that they extend 1/4" beyond the piece F point.

*The center medallion should measure 26-1/2" x 26-1/2". If it measures **larger**, don't worry! You will have the opportunity to trim the borders as you sew them on, so they fit correctly.*

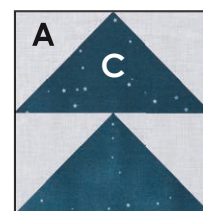
*If it measures **smaller**, you will need to cut the Fabric E border strips wider, to accommodate the difference.*



## Step 3: Make Border 2

1. Working in numerical order, paper-piece twenty-four Border 2 blocks using Fabric C in spaces 1 and 4 and the Fabric A triangles in Spaces 2, 3, 5 & 6. Trim excess fabric to seam allowance line and remove papers.

*Fabric C is ombre, so the triangles will vary in color. You may want to plan out the order of the color gradation in the border before making the blocks.*



Border 2 Block  
make 24

2. Sew the blocks together as pictured to make the top, bottom and side borders.



Border 2 Side  
make 2

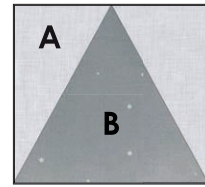


Border 2 Top/Bottom  
make 2

## Step 4: Make Border 4

1. Working in numerical order, paper-piece twenty-four Border 4 blocks using Fabric B in space 1 and the Fabric A rectangles in Spaces 2 & 3. Trim excess fabric to seam allowance line and remove papers.

*Fabric B is ombre, so the triangles will vary in color. You may want to plan out the order of the color gradation in the border before making the blocks.*



Border 4 Block  
make 24

2. Sew the blocks together as pictured to make the top and bottom borders.



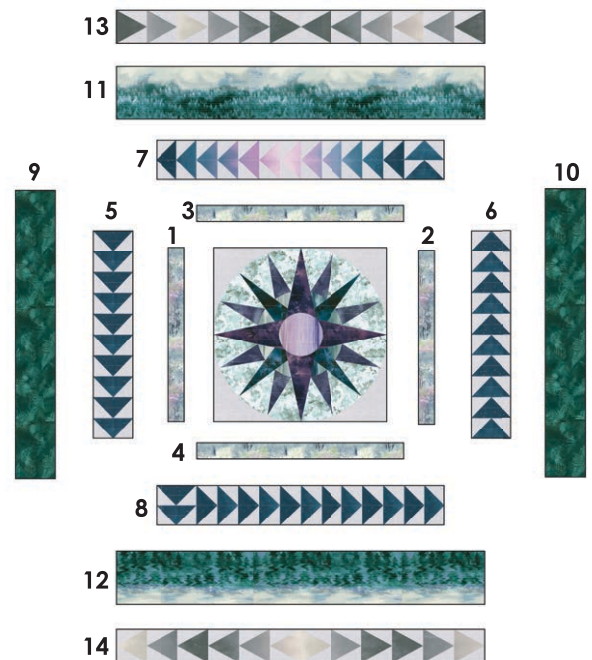
Border 4 Top  
make 1



Border 4 Bottom  
make 1

## Step 5: Assemble the Quilt Top

1. Sew the Fabric E border 1 strips to the sides and then to the top and bottom of the quilt center. Trim excess fabric as you sew. Press seams toward Fabric E.
2. Measure the length of one of the Border 2 top/bottom borders and trim the sides of the quilt center to the same width. Sew the Border 2 sides to the quilt center. Trim the excess fabric from the top and bottom of Border 1 and then sew Border 2 top and bottom to the quilt center.
3. Sew the Fabric G Border 3 strips to the sides of the quilt center. Sew the Fabric D Border 3 strips to the top and bottom of the quilt center. Trim excess fabric and press seams toward Border 3 as you sew.
4. Sew the Border 4 top and bottom to the quilt center. Press seams toward Border 3.



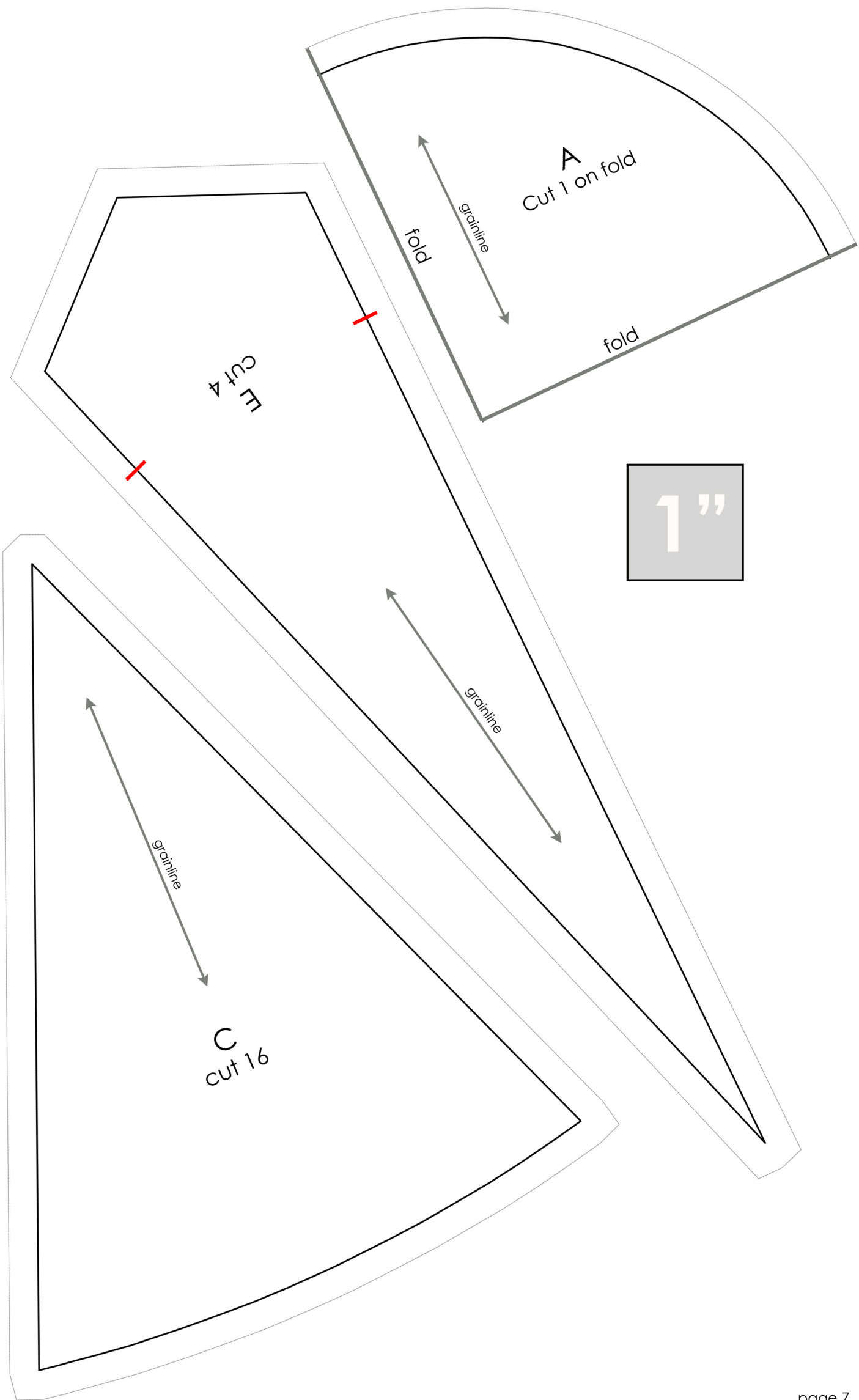
**Quilt Assembly Diagram**

Sew borders in numerical order

Your quilt top is complete!  
Baste, quilt, bind and enjoy.

# Enchanted Navigation

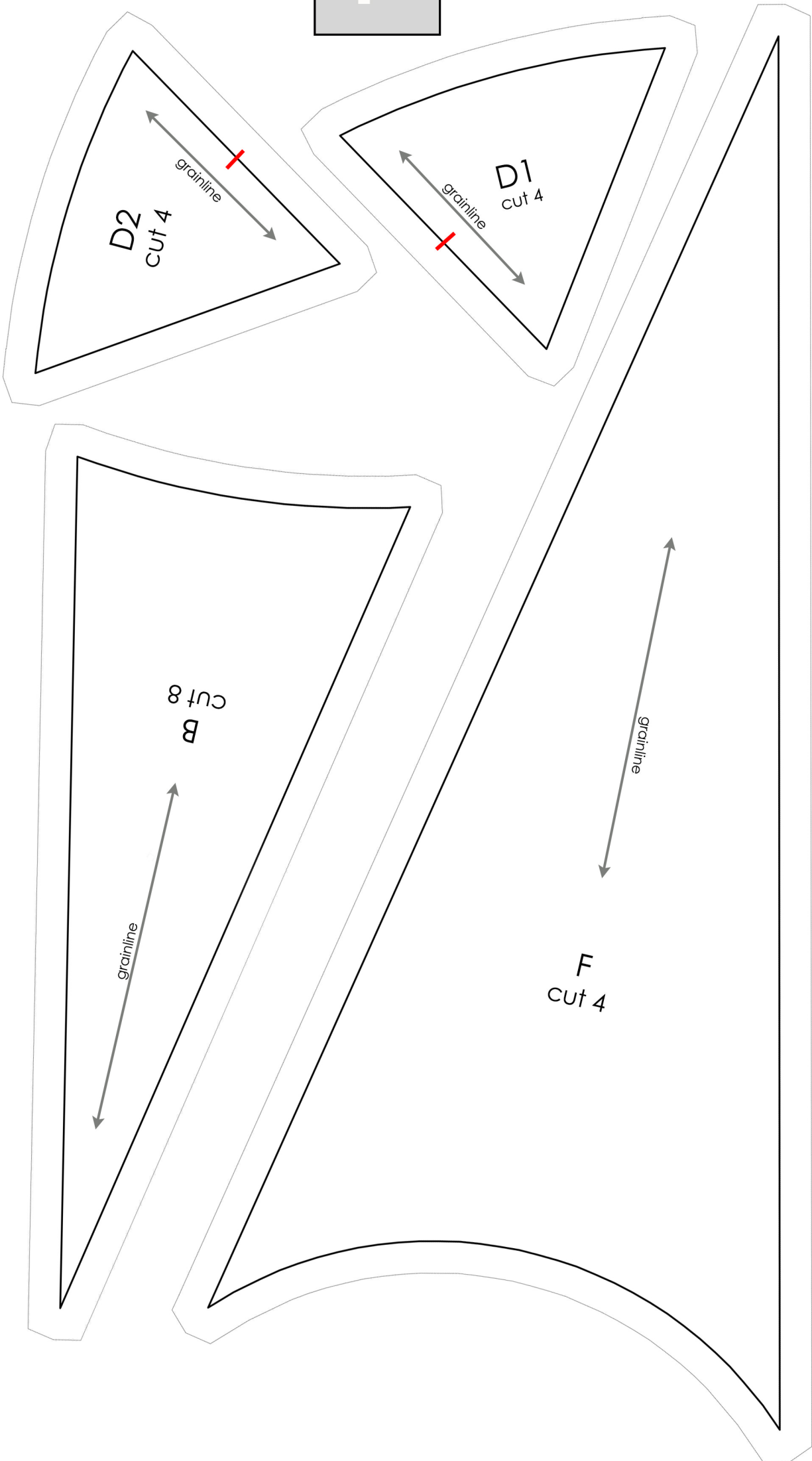
Print one copy of this page





# Enchanted Navigation

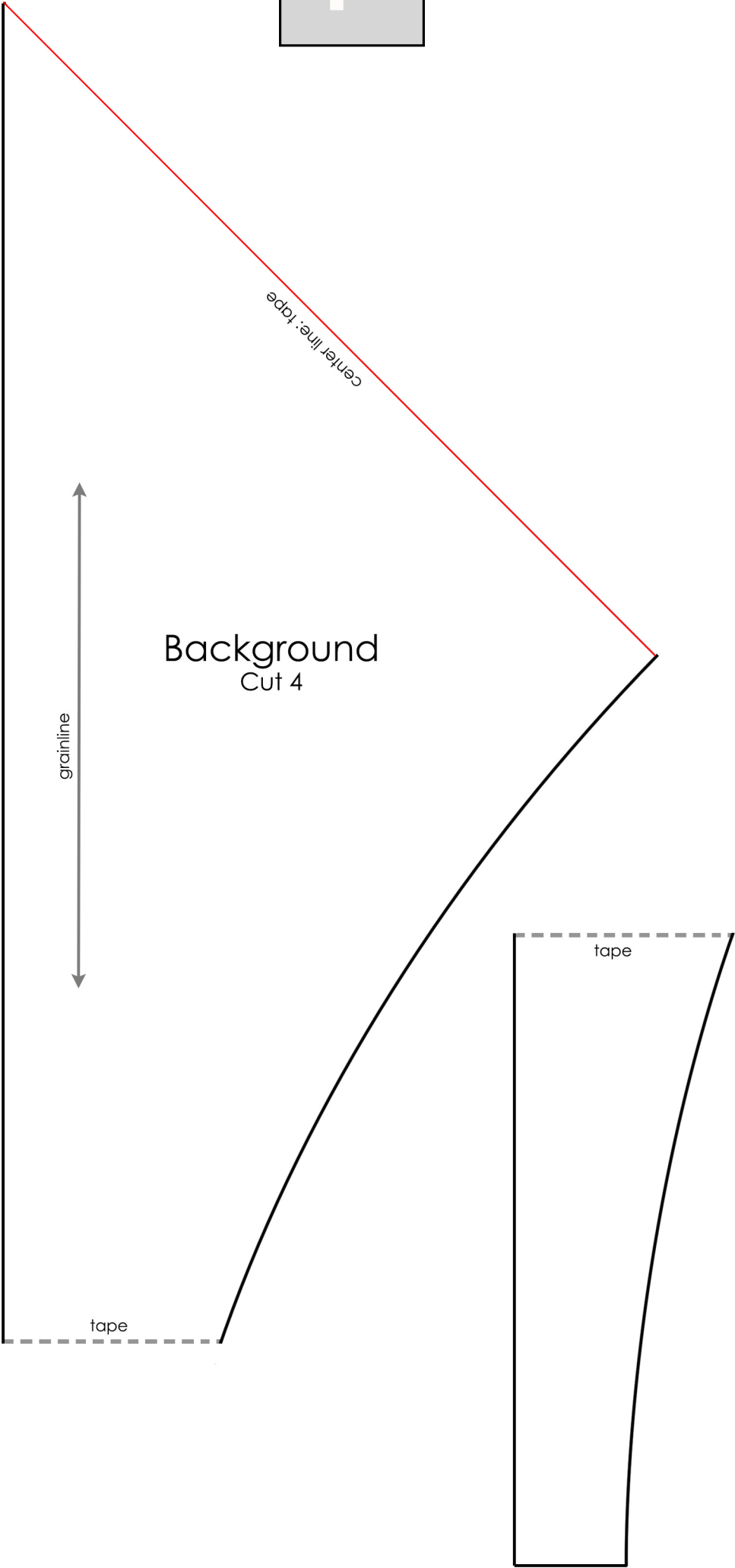
Print one copy of this page





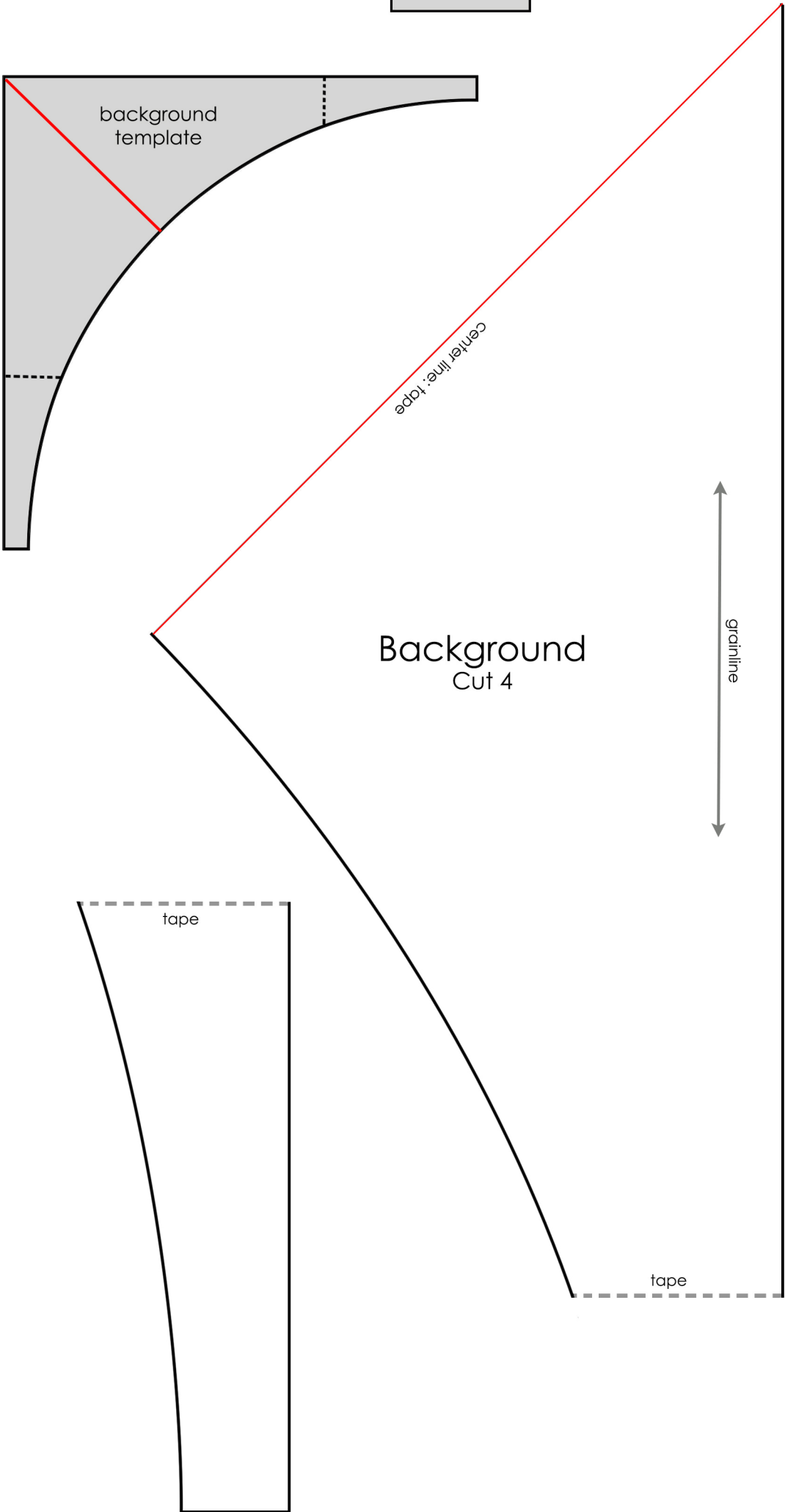
# Enchanted Navigation

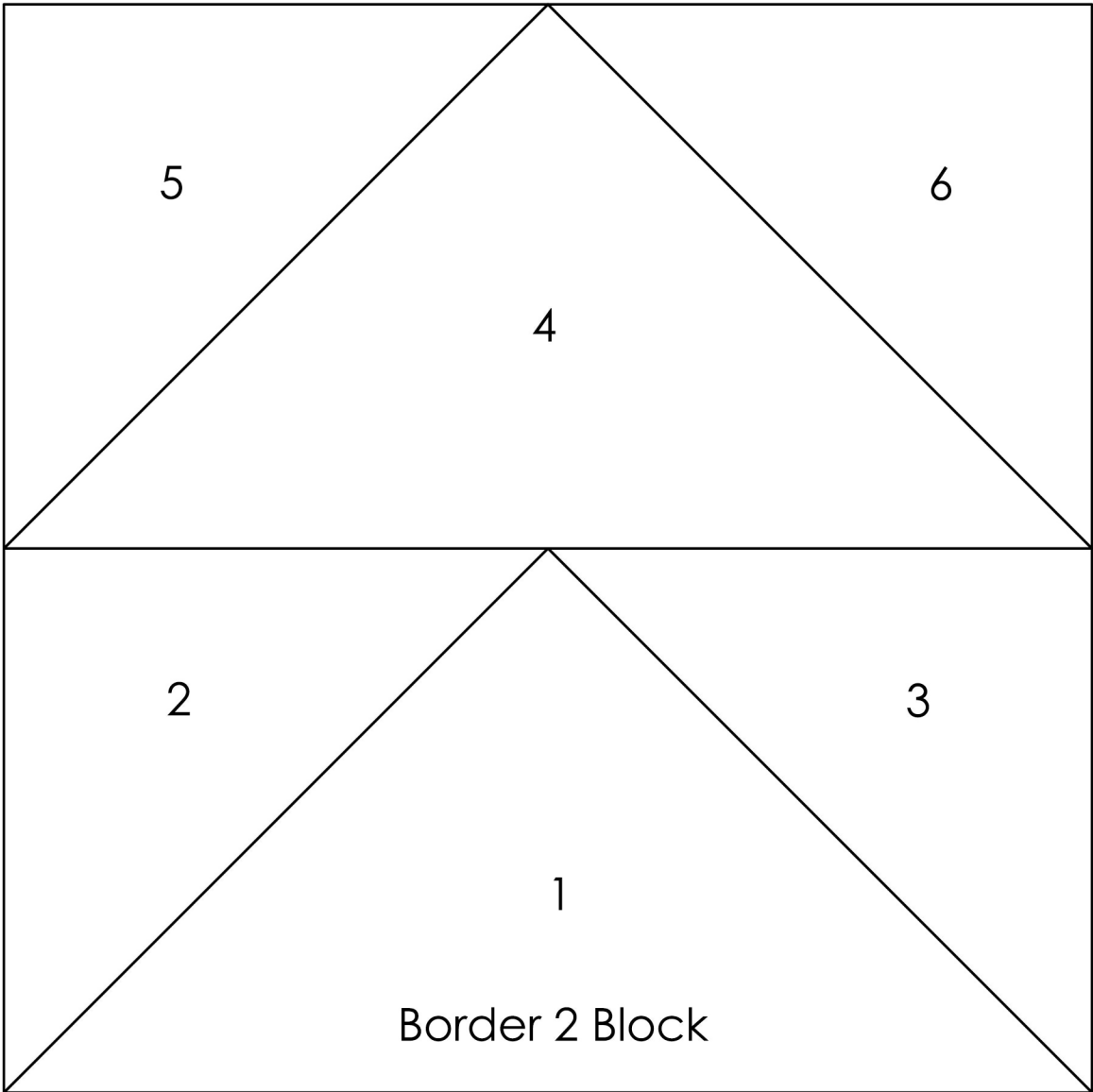
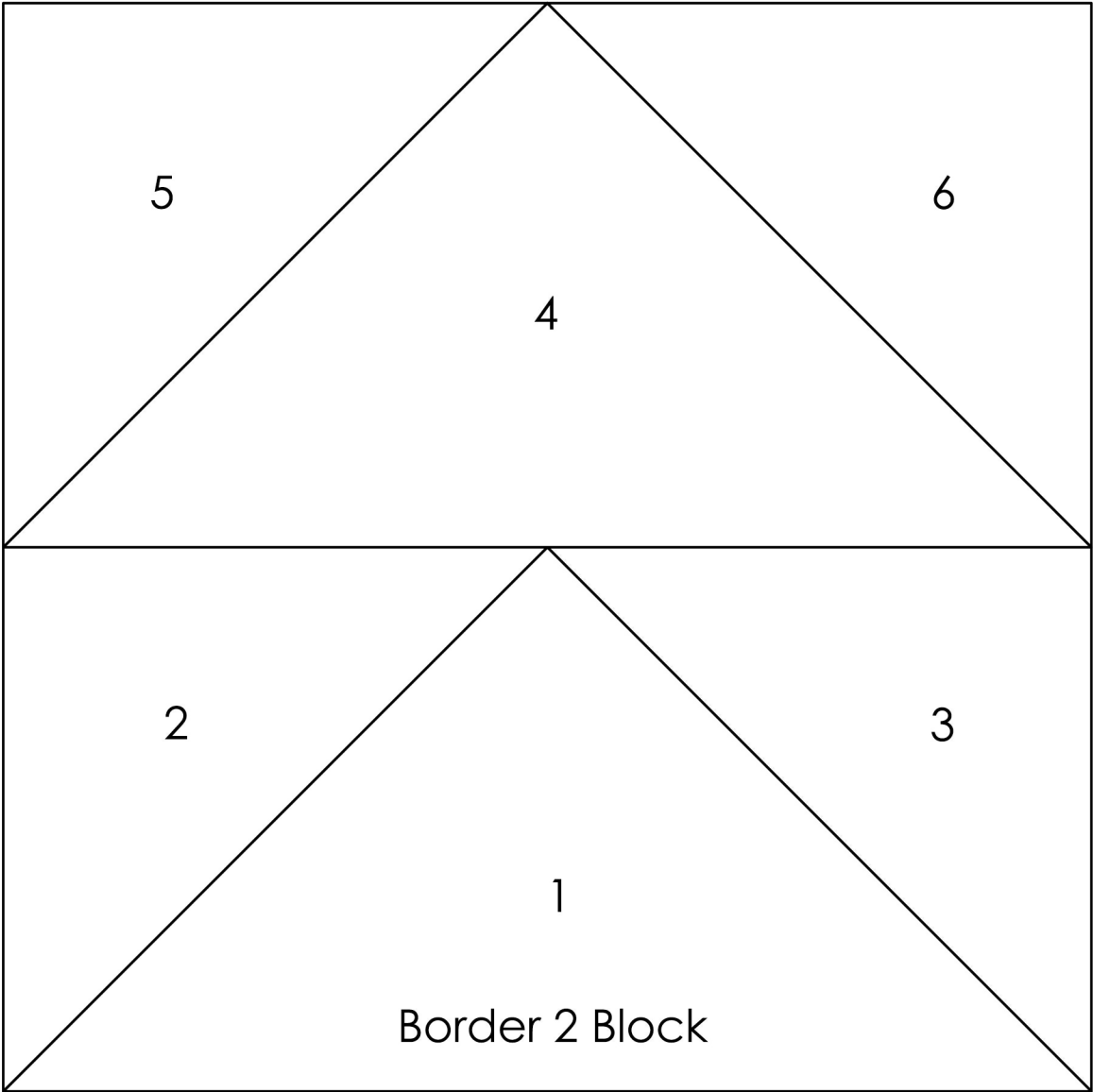
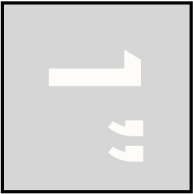
Print one copy of this page



# Enchanted Navigation

Print one copy of this page





# Enchanted Navigation

Print 12 copies of this page

