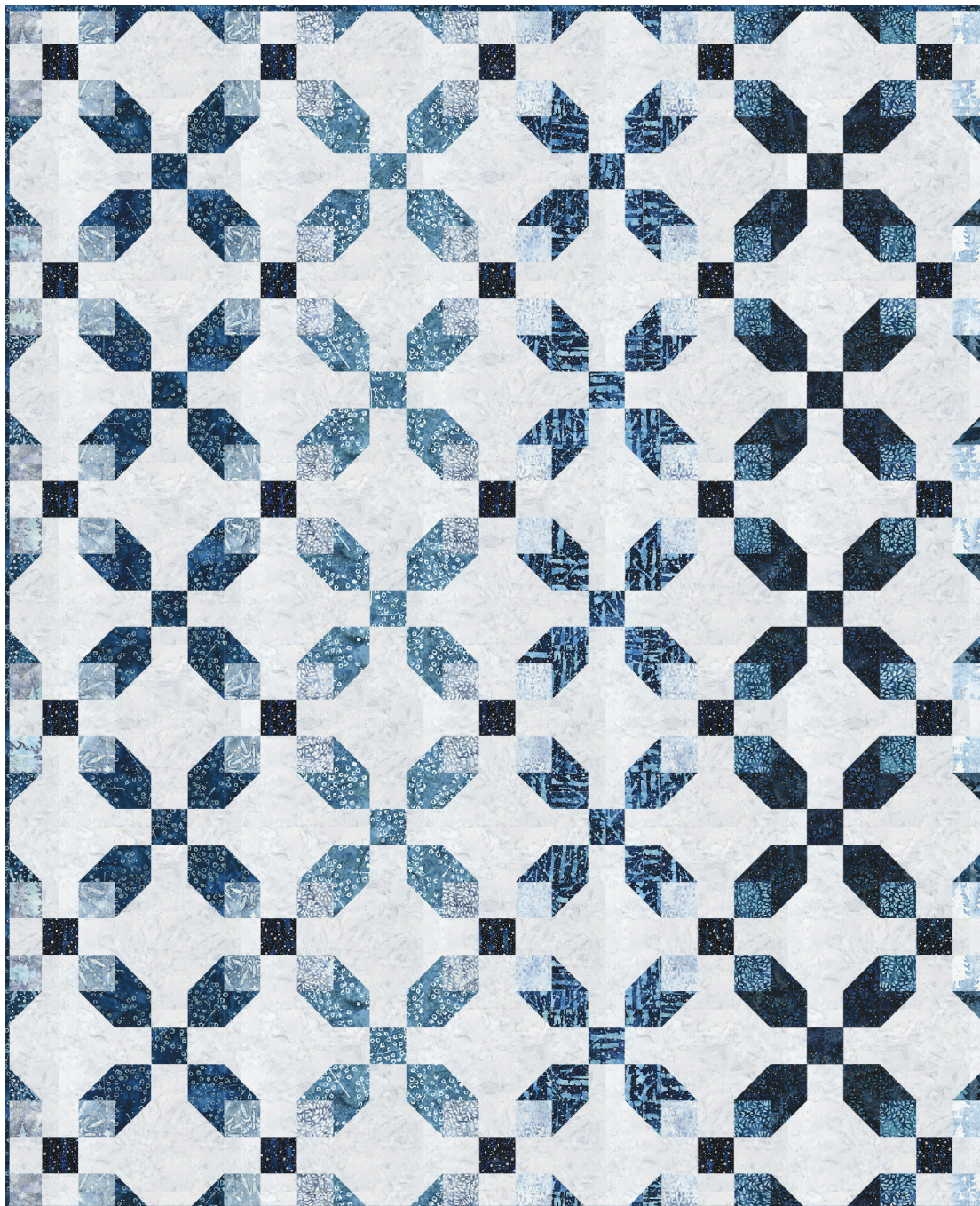


# ENCHANTED

Designed by Ariga Wilson for RK  
[www.robertkaufman.com](http://www.robertkaufman.com)

Featuring ARTISAN  
BATIKS

Magical Winter  
by Lynn



Finished quilt measures: 54" x 66"














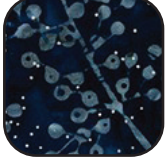

Difficulty Rating: **Beginner**

ROBERTKAUFMAN  
F A B R I C S

For questions about this pattern, please email [Patterns@RobertKaufman.com](mailto:Patterns@RobertKaufman.com).

## Fabric and Supplies Needed

*Fabric amounts based on yardage that is 42" wide.*

Color	Fabric	Name/SKU	Yardage	Color	Fabric	Name/SKU	Yardage
	A	AMD-7000-187 PLATINUM	2-5/8 yards		I	AMDM-20347-80 EVENING	1/8 yard
	B	AMDM-20350-312 STARRY NIGHT	1/4 yard		J	AMDM-20349-80 EVENING	3/8 yard
	C	AMDM-20345-68 DUSTY BLUE	1/8 yard		K	AMDM-20349-4 BLUE	3/8 yard
	D	AMDM-20347-68 DUSTY BLUE	1/4 yard		L	AMDM-20350-80 EVENING	3/8 yard
	E	AMDM-20348-68 DUSTY BLUE	1/4 yard		M	AMDM-20348-80 EVENING	3/8 yard
	F	AMDM-20346-63 SKY	1/4 yard		N	AMDM-20345-80 EVENING	1/8 yard
	G	AMDM-20348-4 BLUE	1/4 yard		Binding* *Also used for Fabric J	AMDM-20349-80 EVENING	1/2 yard
	H	AMDM-20345-63 SKY	1/8 yard				
<p>Copyright 2021, Robert Kaufman For individual use only - Not for resale</p>				<p>You will also need: 3-3/4 yards for backing</p>			



## Notes Before You Begin

- Read through all of the instructions before beginning.
- All of the seam allowances are 1/4" unless otherwise noted.
- Press seam allowances open unless otherwise noted.
- Width of fabric (WOF) is equal to at least 42" wide.
- Right sides together has been abbreviated to RST.
- Remember to measure twice and cut once!

## Cutting Instructions

### **From Fabric A, cut:**

nine 6-1/2" x WOF strips. Subcut:  
forty-nine 6-1/2" squares  
thirteen 2-1/2" x WOF strips. Subcut:  
two hundred 2-1/2" squares

### **From Fabric B, cut:**

two 2-1/2" x WOF strips. Subcut:  
thirty 2-1/2" squares

### **From each of Fabrics C and H, cut:**

one 2-1/2" x WOF strips. Subcut:  
twelve 2-1/2" squares

### **From each of Fabrics D-G, cut:**

two 2-1/2" x WOF strips. Subcut:  
twenty-four 2-1/2" squares

### **From each of Fabrics I and N, cut:**

one 2-1/2" x WOF strips. Subcut:  
ten 2-1/2" squares

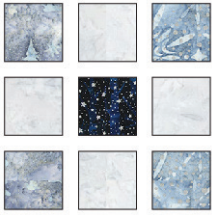
### **From each of Fabrics J-M, cut:**

five 2-1/2" x WOF strips. Subcut:  
sixty-nine 2-1/2" squares

### **From the Binding Fabric, cut:**

seven 2-1/2" x WOF strips

## Assemble the Nine Patch Blocks



**Step 1: Gather:**  
 four 2-1/2" Fabric A squares  
 one Fabric B square  
 two Fabric C squares  
 two Fabric D squares

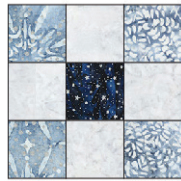
Arrange the units into three rows of three. Note the fabric placement and block orientation in the Block Assembly Diagram.

**Step 2:** Sew the squares together to form the rows. Press the seams toward the darker fabric.

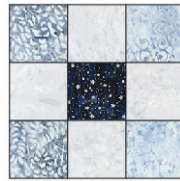
**Step 3:** Sew the rows together, nesting the seams and pressing the seams to one side to form the block. The Nine Patch Block should measure 6-1/2" square. Repeat to make:



six  
C/D Blocks



six  
D/E Blocks



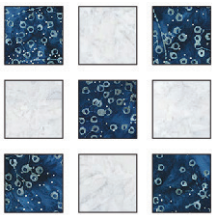
six  
E/F Blocks



six  
F/G Blocks

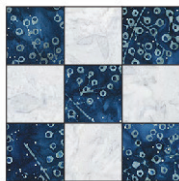


six  
G/H Blocks

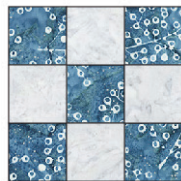


**Step 4: Gather:**  
 four 2-1/2" Fabric A squares  
 five Fabric J squares

Arrange the units into three rows of three. Note the fabric placement and block orientation in the Block Assembly Diagram. Sew together, as in Steps 1-3. Repeat to make:



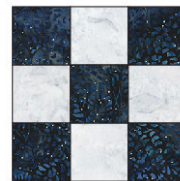
five  
J Blocks



five  
K Blocks



five  
L Blocks



five  
M Blocks

## Assemble the Snowball Blocks



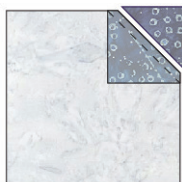
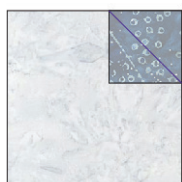
### Step 5: Gather:

one 6-1/2" Fabric A square

two Fabric I squares - mark a diagonal line on the back of each

two Fabric J squares - mark a diagonal line on the back of each

**Step 6:** Place a 2-1/2" Fabric J square in the upper right corner of the Fabric A square, right sides together. Note the orientation of the marked diagonal line. Sew on the marked line, then trim away the excess fabric, leaving a 1/4" seam allowance. Press. Repeat on the lower right corner with another Fabric J square. Repeat in the upper and lower left with the Fabric I squares. The resulting I/J Block should measure 6-1/2". Make five I/J Blocks.

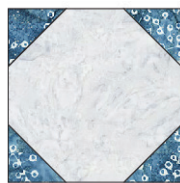


make six  
J/I blocks

Repeat to make:



six  
J Blocks



six  
K Blocks



six  
L Blocks



six  
M Blocks



five  
J/K Blocks



five  
K/L Blocks



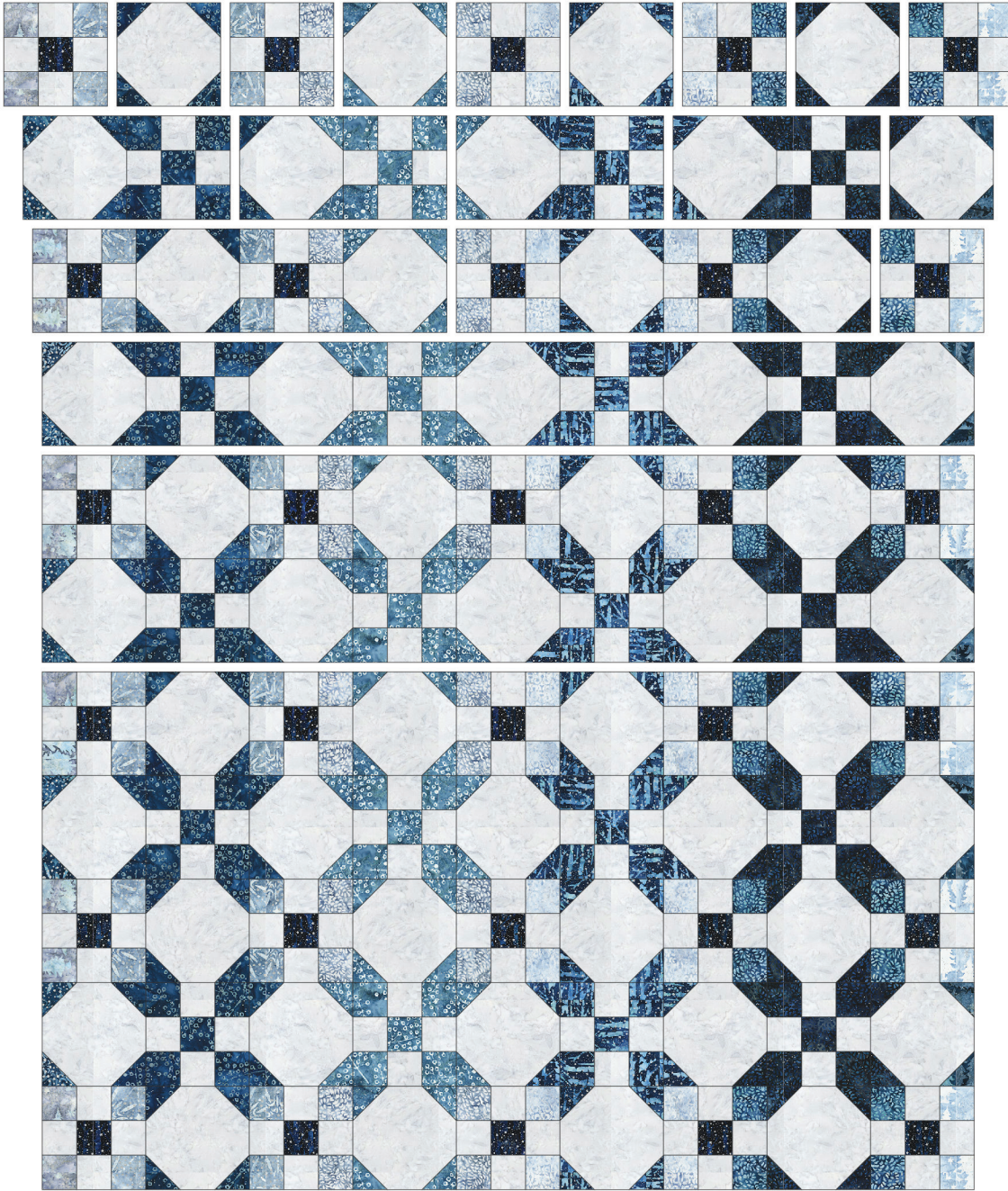
five  
L/M Blocks



five  
M/N Blocks



## Assemble the Quilt



**Step 7:** Arrange the blocks into eleven rows of nine blocks. Note the fabric placement and block orientation in the Quilt Assembly Diagram.

**Step 8:** Sew the blocks together to form rows. Press the rows to the left in the odd numbered rows and to the right in the even numbered rows.

**Step 9:** Sew the rows together to form the quilt center. Press the row seams open.

Your quilt top is complete! Baste, quilt, bind and enjoy!

This pattern may be used for personal purposes only and may not be reproduced in any form without the express permission from Robert Kaufman Fabrics. This pattern is not for resale. All patterns, unless otherwise attributed, are © Robert Kaufman Co., Inc. 2005-2021. All rights reserved.