

ELIZABETH

Designed by Debbie Beaves
www.robertkaufman.com

Featuring *Elizabeth*
A FLOWERHOUSE COLLECTION
by Debbie Beaves



Finished quilt measures: 50-1/2" x 74-1/2"



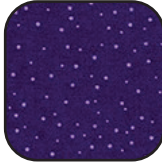





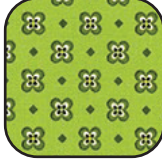
Difficulty Rating: **Beginner**

ROBERTKAUFMAN
F A B R I C S

For questions about this pattern, please email Patterns@RobertKaufman.com.

Fabric and Supplies Needed

Fabric amounts based on yardage that is 42" wide.

| Color | Fabric | Name/SKU | Yardage | Color | Fabric | Name/SKU | Yardage |
|--|--------|-----------------------|-------------|--|----------|-------------------------|-------------------------|
|  | A | FLH-19893-6 PURPLE | 1-1/2 yards |  | F | FLH-19896-14 NATURAL | 1-1/4 yards |
|  | B | FLH-20001-6 PURPLE | 1/2 yard |  | G | FLH-20001-21 LILAC | 1/3 yard |
|  | C | FLH-19895-6 PURPLE | 1/2 yard |  | H | FLH-19895-21 LILAC | 1/3 yard |
|  | D | FLH-19897-6 PURPLE | 7/8 yard |  | Binding* | FLH-20001-6 PURPLE | 5/8 yard |
|  | E | FLH-19897-7 GREEN | 1/4 yard | <p>You will also need: 3 -1/4 yards for backing Suggested Tool: The Tri-Recs Tools™ ruler set is very helpful for accurately cutting multiple layers at a time. Use the 4-1/2" measurement on the rulers. EZ Quilting by Wrights #8823753.</p> | | | *Also used for Fabric B |
| <p>Copyright 2020, Robert Kaufman For individual use only - Not for resale</p> | | | | | | | |

Notes Before You Begin

- Read through all of the instructions before beginning.
- All of the seam allowances are 1/4" unless otherwise noted.
- Press seam allowances open unless otherwise noted.
- Width of fabric (WOF) is equal to at least 42" wide.
- Right sides together has been abbreviated to RST.
- Remember to measure twice and cut once!

Cutting Instructions

Tips: Cut the Template C triangles to produce mirror image cuts as shown.



From Fabric A, cut:

eleven 4-1/2" x WOF strips. Subcut:

eight 4-1/2" squares

four 4-1/2" x 16-1/2" border pieces

six 4-1/2" x 20-1/2" border pieces

From the remaining strips, cut:

twenty-eight Template B triangles

six Template C triangles

six Template C-Reversed triangles

From Fabric B, cut:

one 5" x WOF strip. Subcut:

seven 5" squares

two 4-1/2" x WOF strips. Subcut:

sixteen Template C triangles

sixteen Template C-Reversed triangles

From Fabric C, cut:

one 5" x WOF strip. Subcut:

seven 5" squares

two 4-1/2" x WOF strips. Subcut:

sixteen Template C triangles

sixteen Template C-Reversed triangles

From Fabric D, cut:

six 3-1/2" x WOF strips. Sew together, end-to-end, then trim to:

two 3-1/2" x 50-1/2" top/bottom outer borders

two 3-1/2" x 68-1/2" side outer borders

two 2-1/2" x WOF strips. Set aside for strip piecing.

From Fabric E, cut:

two 2-1/2" x WOF strips. Set aside for strip piecing.

From Fabric F, cut:

two 5" x WOF strips. Subcut:

fourteen 5" squares. Cut one along the diagonal.

seven 4-1/2" x WOF strips. Subcut:

thirty-eight Template B triangles

twenty-eight Template C triangles

twenty-eight Template C-Reversed triangles

From Fabric G, cut:

four 2-1/2" x WOF strips. Set aside for strip piecing.

From Fabric H, cut:

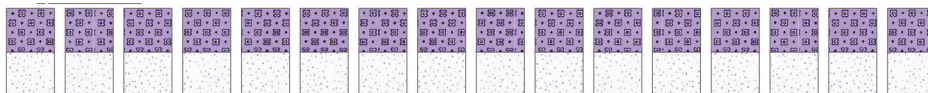
two 4-1/2" x WOF strips. Subcut:
seven 4-1/2" squares

From the Binding Fabric, cut:

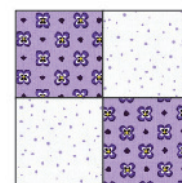
seven 2-1/2" x WOF strips

Assemble the Strip Sets

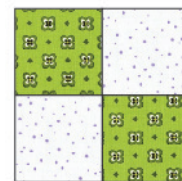
Step 1: Sew the Fabric D and G strips together to form a strip set. Repeat to make a second strip set. Press toward the darker fabric. Subcut into thirty-two 2-1/2" wide units.



Step 2: Sew two Step 1 units together as shown to form a four-patch. Make sixteen 4-1/2" squares.

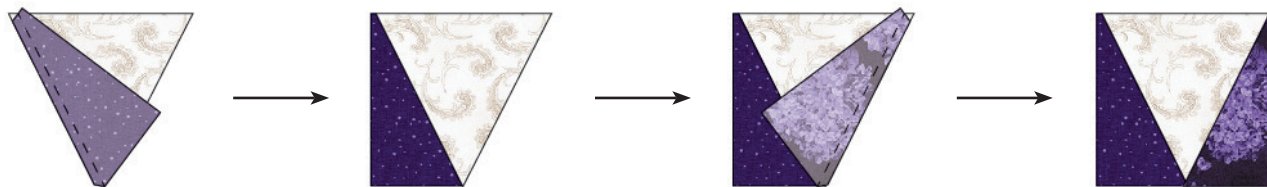


Step 3: Repeat Steps 1 and 2 to make sixteen 4-1/2" squares, using strips from Fabrics E and G.

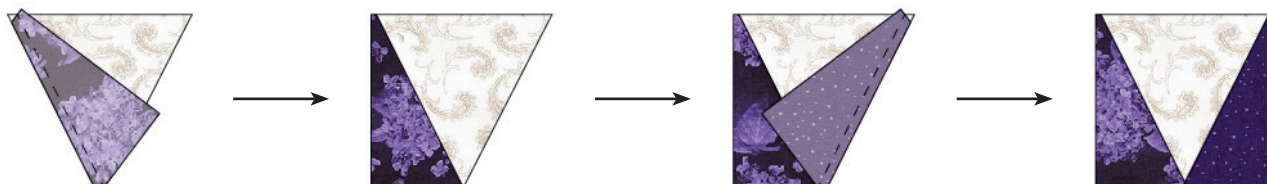


Assemble the Triangle Units

Step 4: Sew a Fabric B triangle (from Template C) to left edge of a Fabric F triangle, as shown. Press. Sew a Fabric C triangle (from Template C-Reversed) to the right edge of the unit, as shown. Press. Make sixteen units like this, each measuring 4-1/2" square.



Step 5: Sew a Fabric C triangle (from Template C) to left edge of a Fabric F triangle, as shown. Press. Sew a Fabric B triangle (from Template C-Reversed) to the right edge of the unit, as shown. Press. Make sixteen units like this, each measuring 4-1/2" square.



Assemble the A Blocks



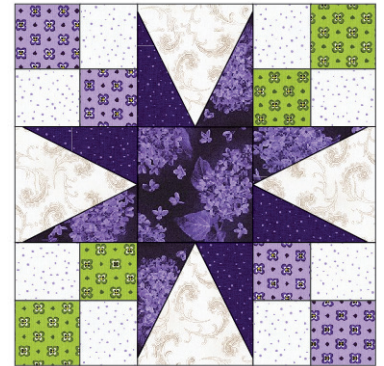
Step 6: Gather:
two Step 2 four-patch units
two Step 3 four-patch units
two Step 4 triangle units
two Step 5 triangle units
one Fabric A square

Arrange the units into three columns of three. Note the fabric placement and block orientation in the Block Assembly Diagram.

Step 7: Sew the squares together to form the columns. Press the seams away from the triangle units.

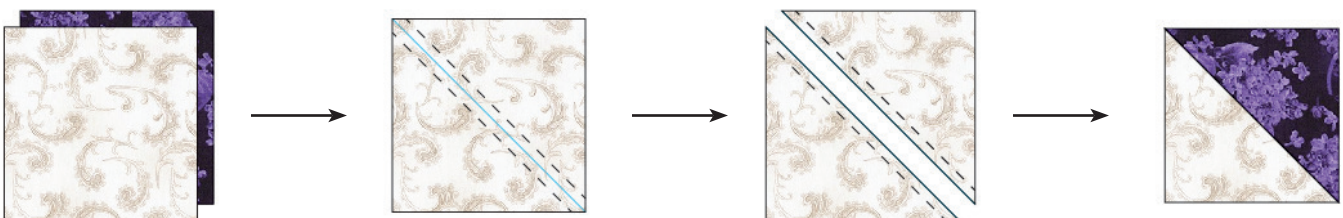
Step 8: Sew the columns together, nesting the seams and pressing the seams to one side to form the block.

The A Block should measure 12-1/2" square. Make eight A Blocks.

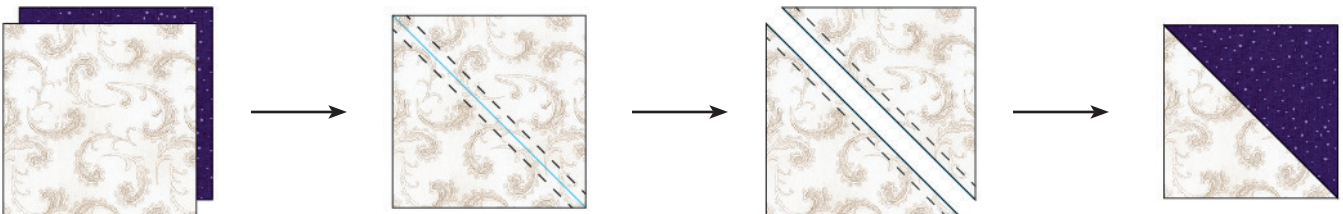


Assemble the Half-Square Triangles (HSTs)

Step 9: Pair a 5" Fabric C square with a 5" Fabric F square, RST. Mark a diagonal line on the wrong side of one square. Sew 1/4" away from both sides of the marked line. Cut on the marked line, creating two half-square triangles (HSTs). Press toward the darker fabric. Trim to 4-1/2" square. Repeat to make fourteen C/F HSTs.

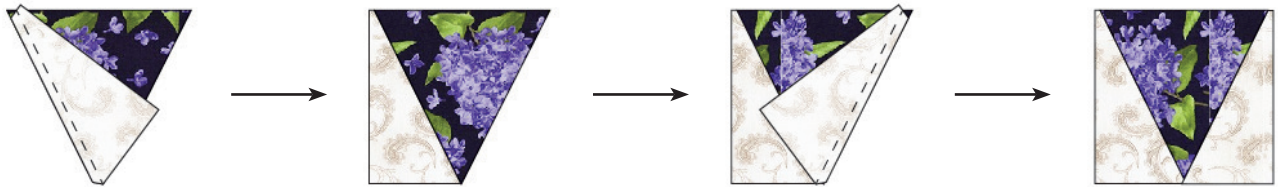


Step 10: Repeat Step 9 to make fourteen B/F HSTs.

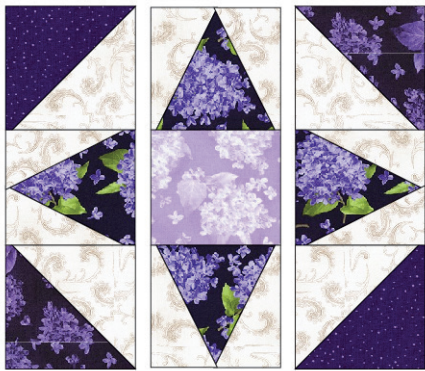


Assemble the B Block Triangle Units

Step 11: Sew two Fabric F triangles (one from Template C and one from Template C-Reversed) to the left and right edges of a Fabric A triangle, as shown. Press. Make twenty-eight units like this, each measuring 4-1/2" square.



Assemble the B Blocks



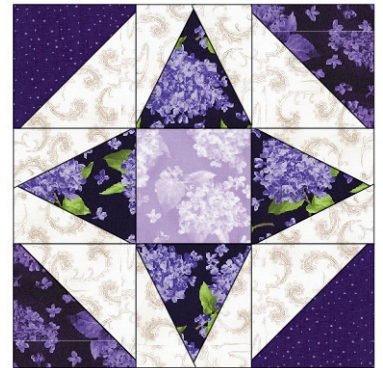
Step 12: Gather:
two Step 9 HSTs
two Step 10 HSTs
four Step 11 triangle units
one Fabric H square

Arrange the units into three columns of three. Note the fabric placement and block orientation in the Block Assembly Diagram.

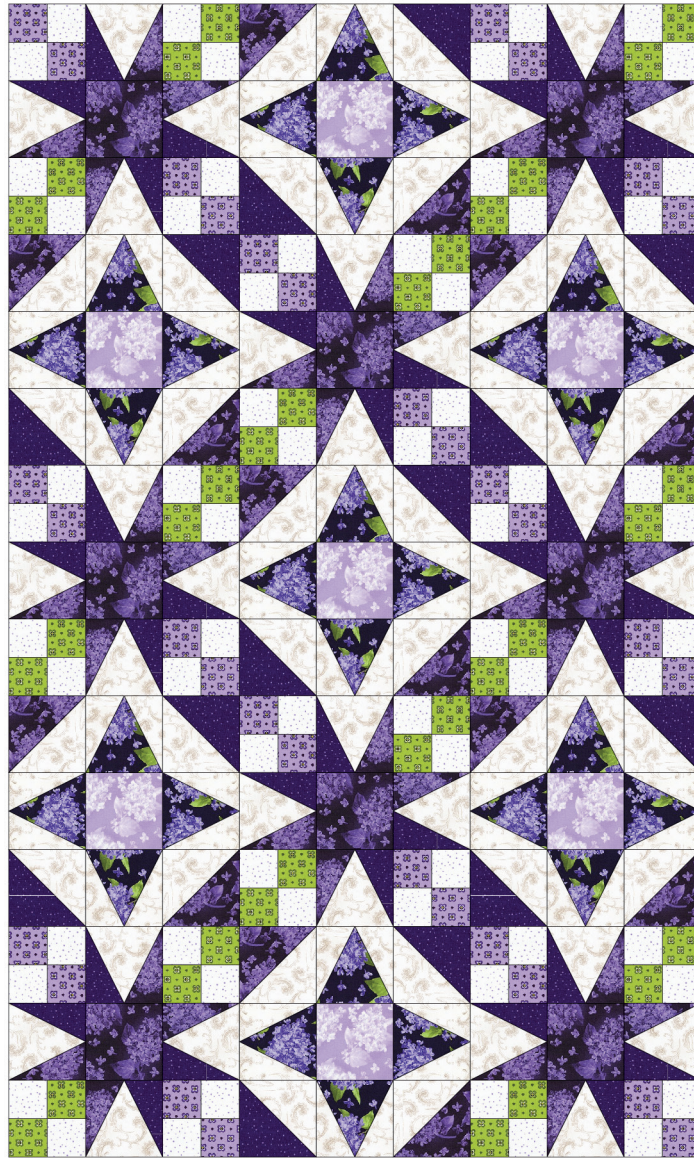
Step 13: Sew the squares together to form the columns. Press the seams away from the triangle units.

Step 14: Sew the columns together, nesting the seams and pressing the seams to one side to form the block.

The B Block should measure 12-1/2" square. Make seven B Blocks.



Assemble the Quilt

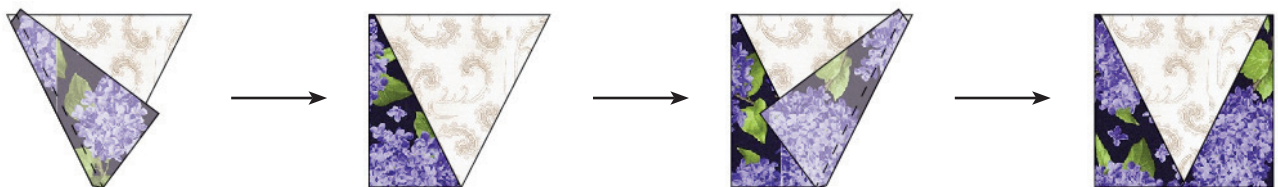


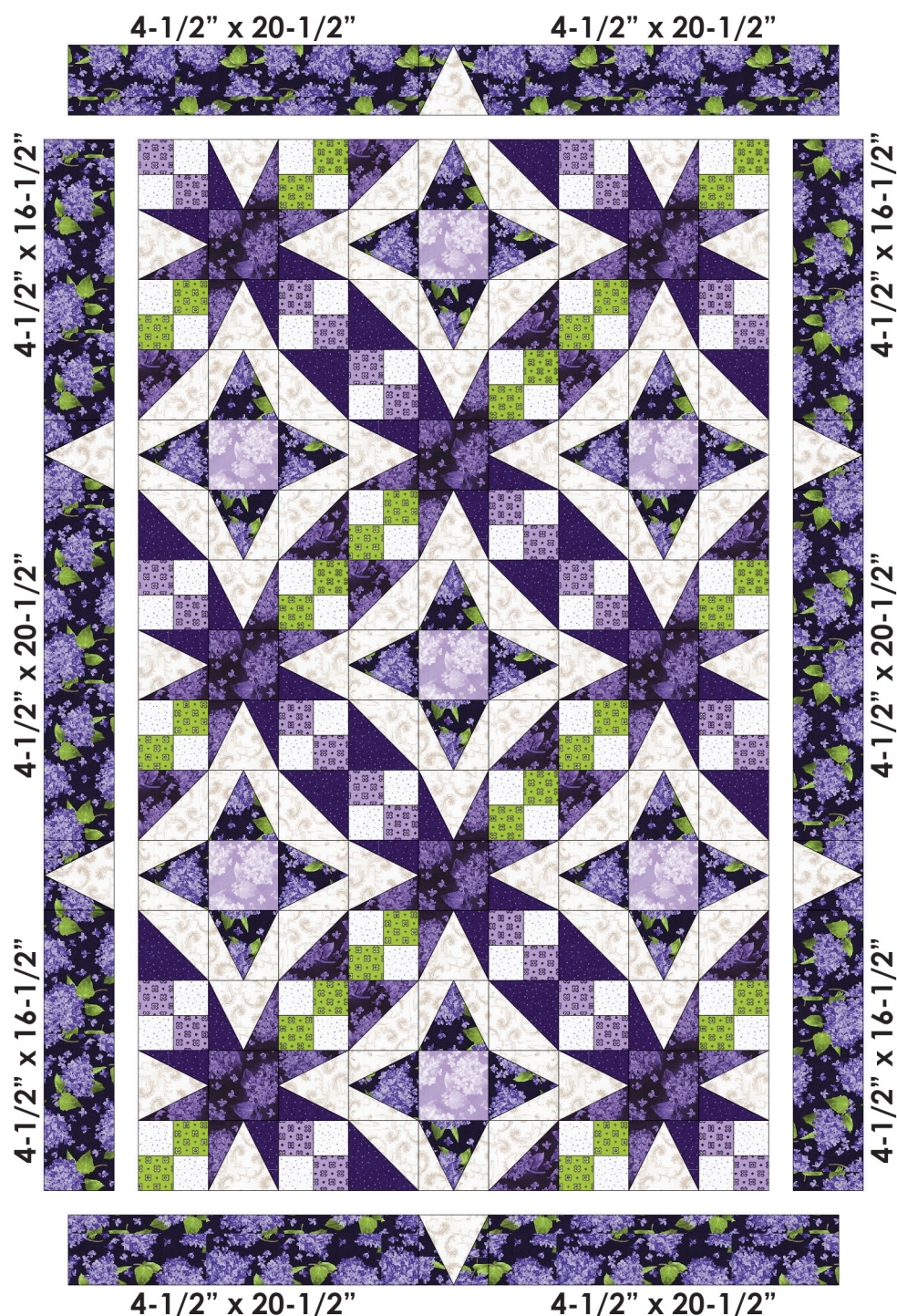
Step 15: Arrange the A and B Blocks into three columns of five blocks each. Note the fabric placement and block orientation in the Quilt Assembly Diagram.

Step 16: Sew the blocks together to form columns. Press the seams in the directions shown.

Step 17: Sew the columns together to form the quilt center. Press.

Step 18: Sew two Fabric A triangles (one from Template C and one from Template C-Reversed) to the left and right edges of a Fabric F triangle, as shown. Press. Make six units like this, each measuring 4-1/2" square.





Step 19: Sew the Fabric A border strips to the triangle units as shown, noting the lengths of each A strip in the diagram. Press. Sew the long border 1 triangle units to the left and right edges of the quilt center and press. Sew the short strips to the top/bottom edges of the quilt and press.

Step 20: Sew the side outer borders to the sides of the quilt center. Press toward the borders. Sew the top and bottom outer borders to the quilt center. Press toward the borders.

Your quilt top is complete! Baste, quilt, bind and enjoy!

Templates

Print at 100%.

Check size printed correctly using 1" box for scale prior to cutting fabric.

1" box for
scale

