

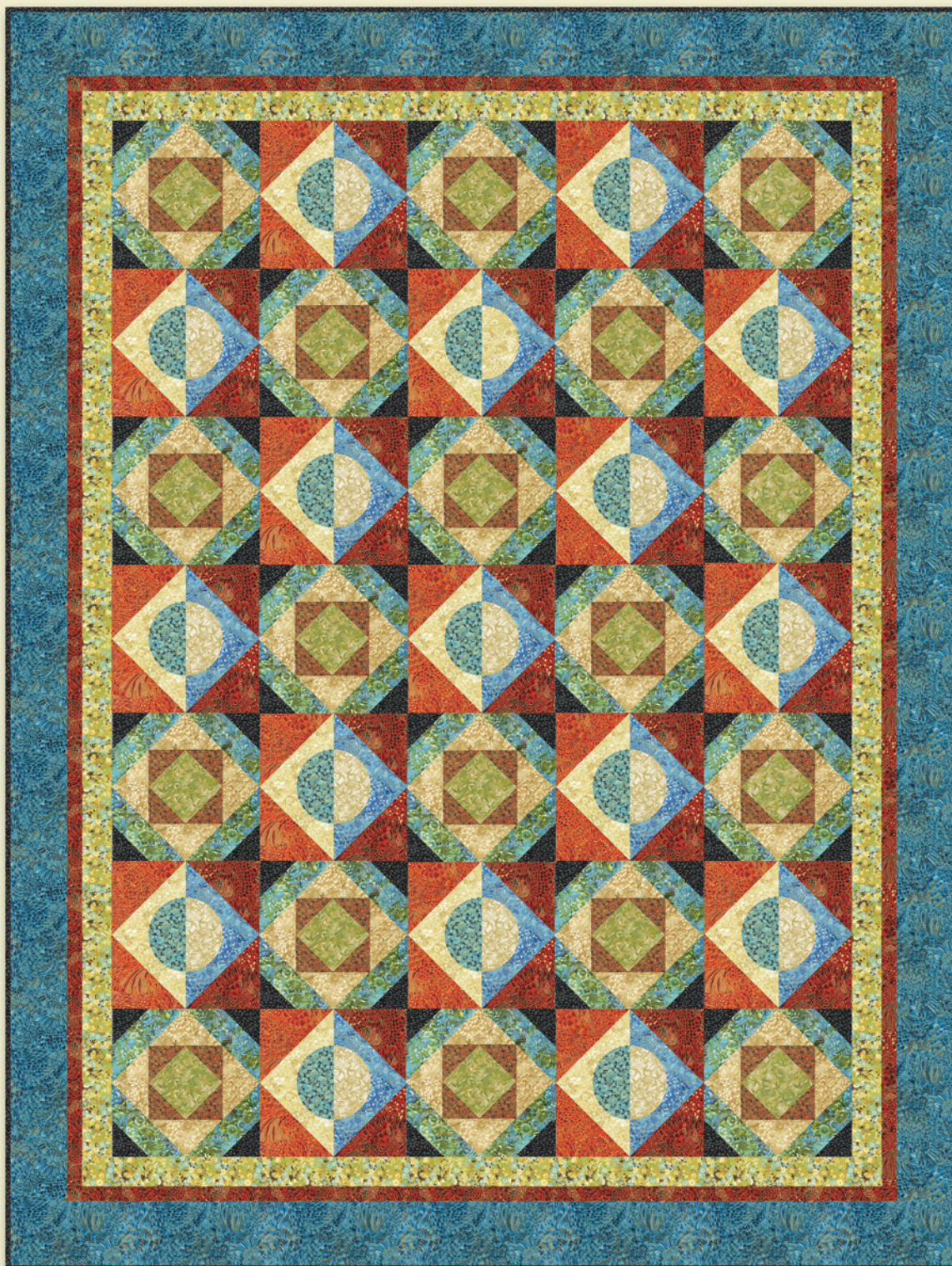
# ECLIPSE

Dark colorstory

designed by Jean Ann Wright for Robert Kaufman Fabrics

featuring

*imperial fusions*  
kyoto



66" x 88"



**ROBERT KAUFMAN**

F A B R I C S

[www.robertkaufman.com](http://www.robertkaufman.com)

Pattern available to download  
directly from Robert Kaufman Fabrics



# ECLIPSE

Light colorstory

designed by Jean Ann Wright for Robert Kaufman Fabrics

featuring

*imperial fusions*  
kyoto



66" x 88"



ROBERT KAUFMAN

F A B R I C S

[www.robertkaufman.com](http://www.robertkaufman.com)

Pattern available to download  
directly from Robert Kaufman Fabrics



**Eclipse quilt pattern featuring Imperial Fusions Collection Kyoto**  
**Quilt designed by Jean Ann Wright**  
**Quilt size: 64" x 84"**  
**Block size: 10"**

	<b>Yardage</b>	<b>Light colorstory</b>	<b>Dark colorstory</b>
Fabric A block 1	1/2 yd	EKJM-10824-24	ETJM-10829-39
Fabric B block 1	5/8 yd	ETJM-10823-78	ETJM-10831-91
Fabric C block 1	5/8 yd	EKJM-10824-107	ETJM-10823-14
Fabric D block 1	1-1/8 yd	ETJM-10829-234	ETJM-10823-78
Fabric E block 1	5/8 yd	ETJM-10825-6	EKJM-10828-184
Fabric F block 2	1/4 yd	EKJM-10824-15	ETJM-10829-84
Fabric G block 2	1/4 yd	ETJM-10827-70	ETJM-10831-213
Fabric H* blk 2, border	1yd (2/3 yd)	ETJM-10831-213	ETJM-10823-4
Fabric I block 2	2/3 yd	ETJ-10827-15	ETJM-10826-14
Fabric J block 2	5/8 yd	ETJM-10827-10	ETJM-10825-179
Fabric K* blk 2, border	2/3 yd (1 yd)	ETJM-10827-235	ETJM-10825-91
Fabric L border	2/3 yd	ETJM-10827-186	ETJM-10826-192
Fabric M border	1-1/8 yd	ETJM-10829-192	ETJM-10825-213

\*Fabric H is border on pastel version, Fabric K is border on Jewel Tone version.  
 Fabric requirements 1 yd to include border and 2/3 yard for block only

**Binding**

2/3 yd binding required: Fabric B for pastel version and Fabric E for Jewel Tone version

Backing: 5-1/8 yd required: both versions use Fabric L for backing

## Cutting

Fabric A Cut (3) 5-1/2" x WOF strips, recut into (18) 5-1/2" squares

Fabric B Cut (6) 3" x WOF strips, recut into (72) 3" squares

Fabric C Cut (3) 6-1/4" x WOF strips, recut into (18) 6-1/4" squares, then cut each square in half on diagonal twice to yield (72) quarter-square triangles

Fabric D Cut (6) 5-7/8" x WOF strips, recut into (36) 5-7/8" squares, then cut each square in half on diagonal once to yield (72) half-square triangles

Fabric F Cut (6) 3" x WOF strips, recut into (72) 3" squares

Fabric G Cut (9) 5" circles, then cut each circle in half on diagonal once to make (18) half circles (17 are needed)

Fabric H – \*Light version only includes borders

Cut (2) 11-1/4" x WOF strips, recut into (5) 11-1/4" squares, then cut each square in half on diagonal twice to make (20) quarter-square triangles (17 are needed)

\*Cut (7) 1-1/2" x WOF strips, sew together end-to-end, then cut into (2) vertical borders 1-1/2" x 70-1/2" and (2) horizontal borders 1-1/2" x 62-1/2"

Fabric I Cut (2) 11-1/4" x WOF strips, recut into (5) 11-1/4" squares, then cut each square in half on diagonal twice to make (20) quarter-square triangles (17 are needed)

Fabric J Cut (3) 5-7/8" x WOF strips, recut into (17) 5-7/8" squares, then cut each square in half on diagonal once to make (34) quarter-square triangles

Fabric K \*Dark version only includes borders

Cut (2) 11-1/4" x WOF strips, recut into (5) 11-1/4" squares, then cut each square in half on diagonal twice to make (20) quarter-square triangles (17 are needed)

\*Cut (7) 1-1/2" x WOF strips, sew together end-to-end, then cut into (2) vertical borders 1-1/2" x 70-1/2" and (2) horizontal borders 1-1/2" x 62-1/2"

Fabric L Cut (8) 2-1/2" x WOF strips, sew together end-to-end, then cut into (2) vertical borders 72-1/2" long and (2) horizontal borders 66-1/2" long

Fabric M Cut (8) 4-1/2" x WOF strips, sew together end-to-end, then cut into (2) vertical borders 76-1/2" long and (2) horizontal borders 68-1/2" long

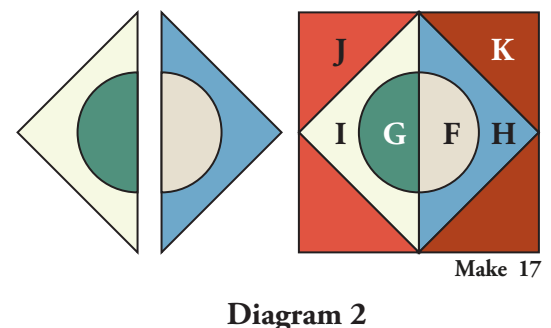
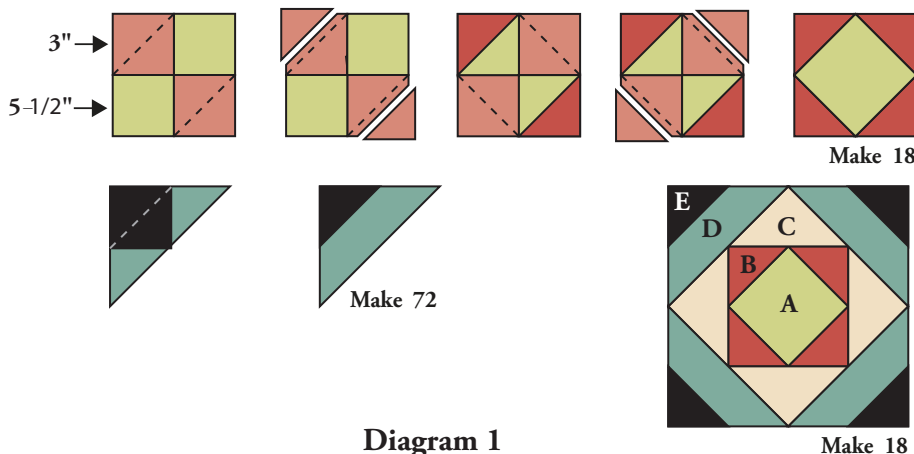
Binding - Fabric B for Light version and Fabric E for Dark version

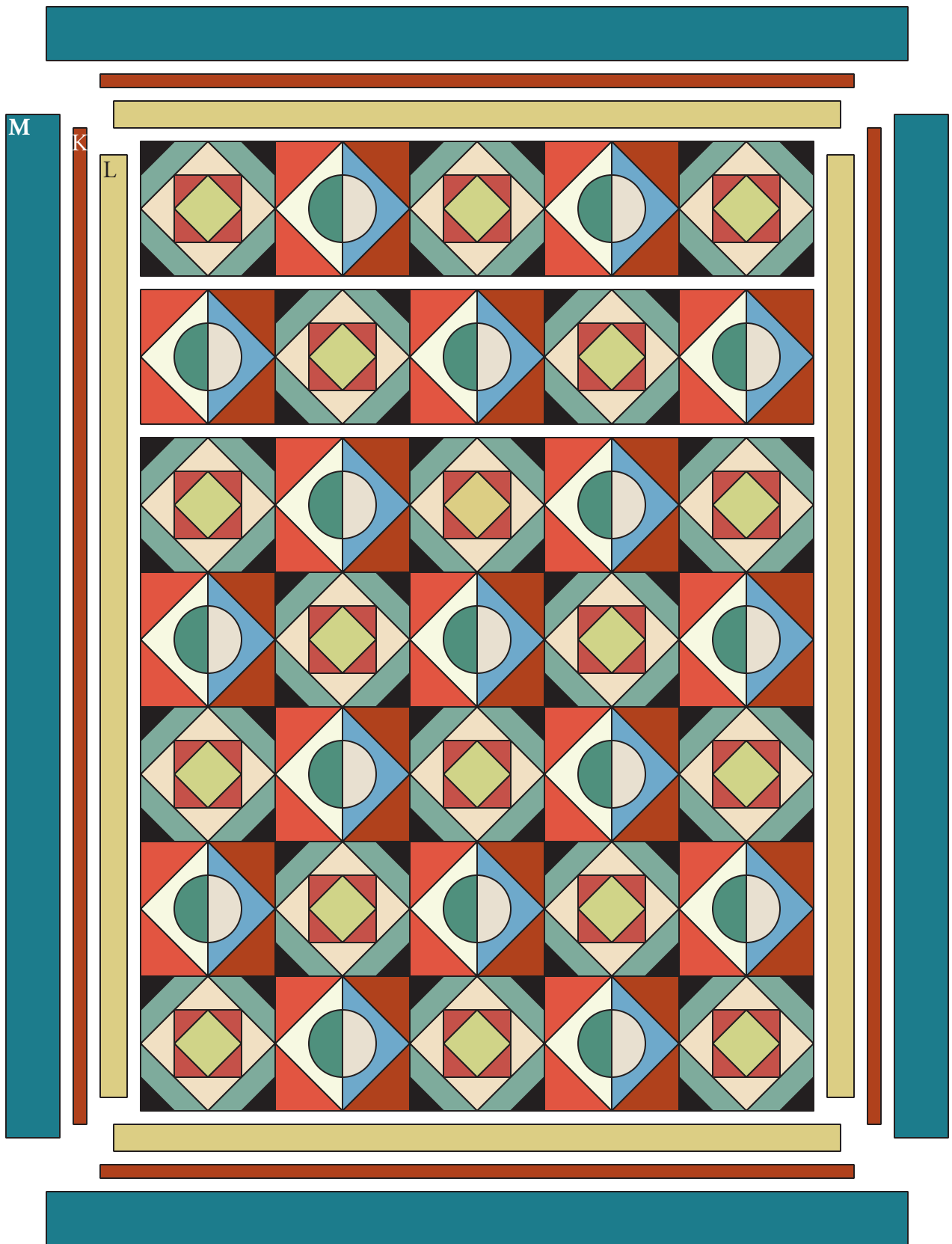
Cut (9) 2-1/4" x WOF strips, sew together end-to-end for binding

Backing: Cut the backing into two equal pieces and sew together selvedge to selvedge. Trim to 4" larger all around than quilt top.

## Making the Quilt

1. **Block 1:** Referring to Diagram 1, position a fabric B square in opposite corners of a fabric A square. Sew on diagonal from corner to corner. Trim away excess fabric 1/4" from stitching line. Fold out resulting triangle and press. Repeat for remaining 2 corners. Make 18.
2. Sew a fabric C triangle to each side of the units made in step 1. Press seams. Make 18.
3. Position a fabric E square in the corner of a fabric D triangle. Sew on diagonal as in step 1, trim and press. Make 72.
4. Sew the units made in step 3 to each side of the units made in step 2 to complete the block. Make 18 blocks.
5. **Block 2:** Referring to diagram 2, center a fabric F half circle onto a fabric H triangle aligning the raw straight edge of the circle to the long raw edge of the triangle. Appliqué in place, using your favorite appliqué method. Make 17. Repeat using fabric G half circles and fabric I triangles. Make 17. Sew the two triangles together, matching outside edges of the circle. Press seams open.
6. Sew a fabric J triangle to both sides of the fabric I triangle and a fabric K triangle to each side of the fabric H triangle to complete the block. Make 17.
7. Referring to the quilt assembly diagram, alternate blocks 1 and 2 and sew together to make a row of 5 blocks. Odd numbered rows will have 3 blocks 1 and 2 blocks 2. Even numbered rows will have 2 blocks 1 and 3 blocks 2. Make 7 rows. Sew the rows together to complete the center section of the quilt top.
8. Sew the fabric L vertical borders to opposite sides of the quilt top. Sew the fabric L horizontal borders to the top and bottom of the quilt top.
9. Sew the fabric K borders (jewel tone version) or fabric H borders (pastel version) to the quilt top in the same manner.
10. Sew the fabric M borders to the quilt top, again, in the same manner.
11. Layer the quilt top, batting and backing and quilt the layers together. Bind to finish the quilt.





Quilt Assembly Diagram