

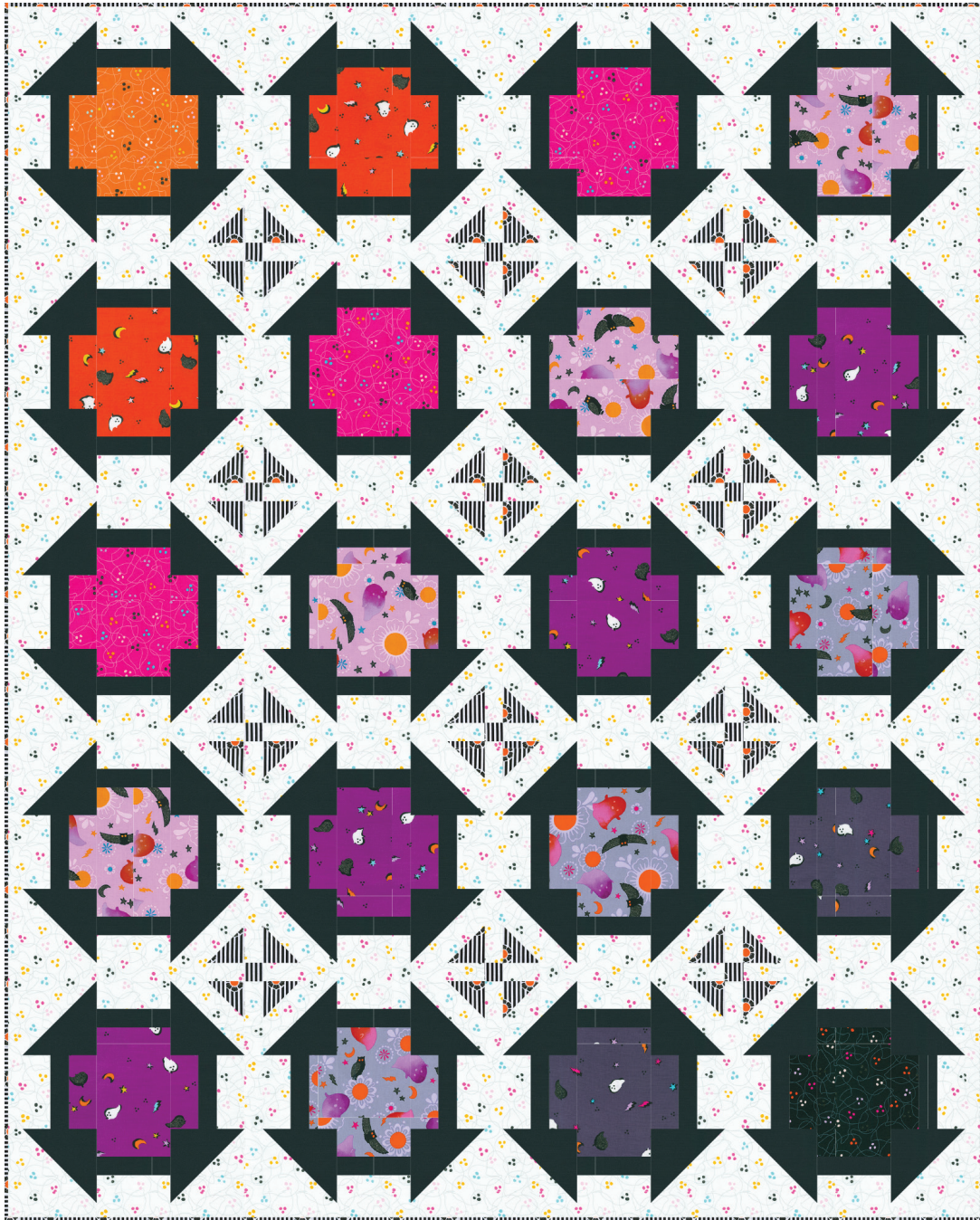
CROSS CHURN

Designed by Elise Lea for RK
www.robertkaufman.com

Featuring *Wishwell*

BOODACIOUS

Vanessa Lillrose & Linda Fitch



Finished quilt measures: 53" x 66"

Difficulty Rating: **Beginner**

ROBERTKAUFMAN
F A B R I C S

For questions about this pattern, please email Patterns@RobertKaufman.com.

Fabric and Supplies Needed

Fabric amounts based on yardage that is 42" wide.

Color	Fabric	Name/SKU	Yardage	Color	Fabric	Name/SKU	Yardage
	A	WELM-20895-1 WHITE	2 yards		G	WELM-20893-293 SMOKE	1/4 yard
	B	K001-359 PEPPER	1-1/8 yard		H	WELM-20895-110 HOT PINK	1/3 yard
	C	WELM-20894-182 LICORICE	1/3 yard		I	WELM-20891-304 SHADOW	1/3 yard
	D	WELM-20895-148 PUMPKIN	1/4 yard		J	WELM-20891-287 SWEET	1/3 yard
	E	WELM-20895-2 BLACK	1/4 yard		K	WELM-20893-419 GUMDROP	1/3 yard
	F	WELM-20893-322 ORANGE SPICE	1/4 yard		Binding*	WELM-20894-182 LICORICE <i>*Also used for Fabric C</i>	1/2 yard
<p>Copyright 2022, Robert Kaufman For individual use only - Not for resale</p>				<p>You will also need: 3-1/2 yards for backing</p>			

Notes Before You Begin

- Read through all of the instructions before beginning.
- All of the seam allowances are 1/4" unless otherwise noted.
- Press seam allowances open unless otherwise noted.
- Width of fabric (WOF) is equal to at least 42" wide.
- Right sides together has been abbreviated to RST.
- Remember to measure twice and cut once!

From Fabric A, cut:

five 5" x WOF strips. Subcut:

forty 5" squares for the HSTs

four 4-1/2" x WOF strips. Subcut:

eighty 4-1/2" x 2" rectangles

seventeen 1-1/2" x WOF strips. Sew six strips together, end-to-end, then trim:

two 1-1/2" x 64-1/2" side outer borders

two 1-1/2" x 53-1/2" top/bottom borders

From the eleven remaining strips, subcut:

thirty-one 1-1/2" x 12-1/2" block sashing strips

From Fabric B, cut:

five 5" x WOF strips. Subcut:

forty 5" squares for the HSTs

three 4-1/2" x WOF strips. Subcut:

eighty 4-1/2" x 1-1/2" strips.

From Fabric C, cut:

three 2-1/2" x WOF strips. Subcut:

forty-eight 2-1/2" squares

one 1-1/2" x WOF strip. Subcut:

twelve 1-1/2" squares

From each of Fabrics D and E, cut:

one 4-1/2" x WOF strip. Subcut:

one 4-1/2" square

four 4-1/2" x 2" rectangles

From each of Fabrics F and G, cut:

one 4-1/2" x WOF strip. Subcut:

two 4-1/2" squares

eight 4-1/2" x 2" rectangles

From each of Fabrics H and I, cut:

two 4-1/2" x WOF strips. Subcut:

three 4-1/2" squares

twelve 4-1/2" x 2" rectangles

From each of Fabrics J and K, cut:

two 4-1/2" x WOF strips. Subcut:

four 4-1/2" squares

sixteen 4-1/2" x 2" rectangles

From the Binding Fabric, cut:

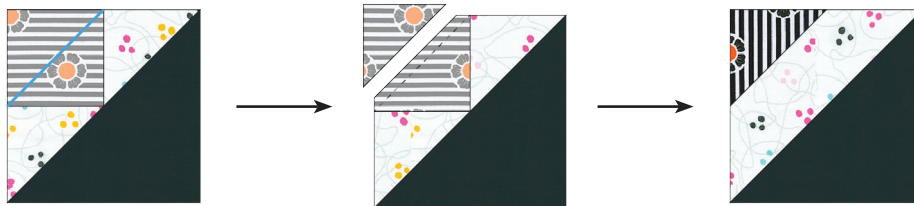
seven 2-1/2" x WOF strips

Assemble the Half-Square Triangles (HSTs)

Step 1: Pair a 5" Fabric A square with a 5" Fabric B square, RST. Mark a diagonal line on the wrong side of one square. Sew $\frac{1}{4}$ " away from both sides of the marked line. Cut on the marked line, creating two half-square triangles (HSTs). Press toward the darker fabric. Trim to $4\frac{1}{2}$ " square. Repeat to make eighty A/B HSTs.



Step 2: Gather forty-eight of the HSTs from Step 1. Place a $2\frac{1}{2}$ " Fabric C square in the Fabric A corner of the HST, right sides together. Note the orientation of the marked diagonal line. Sew on the marked line, then trim away the excess fabric, leaving a $\frac{1}{4}$ " seam allowance. Press. Repeat to make a total of forty-eight squares. These will be referred to as the A/B-C HSTs.



Assemble the Block Edges

Step 3: Gather:

- one $2" \times 4\frac{1}{2}"$ Fabric A rectangle
- one $1\frac{1}{2}" \times 4\frac{1}{2}"$ Fabric B rectangle
- one $2" \times 4\frac{1}{2}"$ Fabric D rectangle

Sew together, along the $4\frac{1}{2}"$ edge, with the Fabric B rectangle in the center. Press. Repeat to make four like this. These will be placed at the center of each edge of a block.



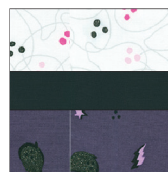
Step 4: Repeat Step 3 to make:



four Block Edges from
Fabric E



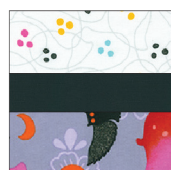
eight Block Edges
from Fabric F



eight Block Edges
from Fabric G



twelve Block Edges
from Fabric H



twelve Block Edges
from Fabric I

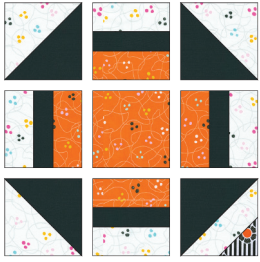


sixteen Block Edges
from Fabric J



sixteen Block Edges
from Fabric K

Assemble the Blocks



Step 5: Gather:
four Fabric D Block Edges
one 4-1/2" Fabric D square
three A/B HSTs
one A/B-C HST

Arrange the units into three rows of three. Note the fabric placement and block orientation in the Block Assembly Diagram.

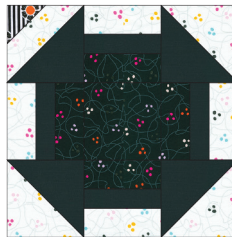
Step 6: Sew the squares together to form the rows. Press the seams in opposite directions every other row.

Step 7: Sew the rows together, nesting the seams and pressing the seams to one side to form the block.

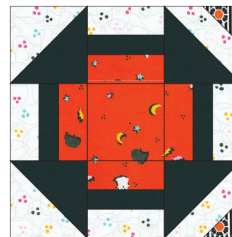
The resulting Block should measure 12-1/2" square.



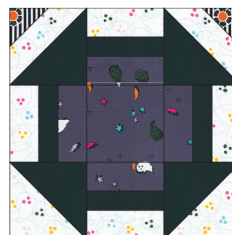
Step 8: Repeat Steps 5-7 to make the remaining nineteen Blocks for the quilt, referring to the list here for placement of the A/B-C HSTs.



Make one
Fabric E Block



Make two Fabric F Blocks



Make two Fabric G Blocks



Make three Fabric H Blocks



Make three Fabric I Blocks

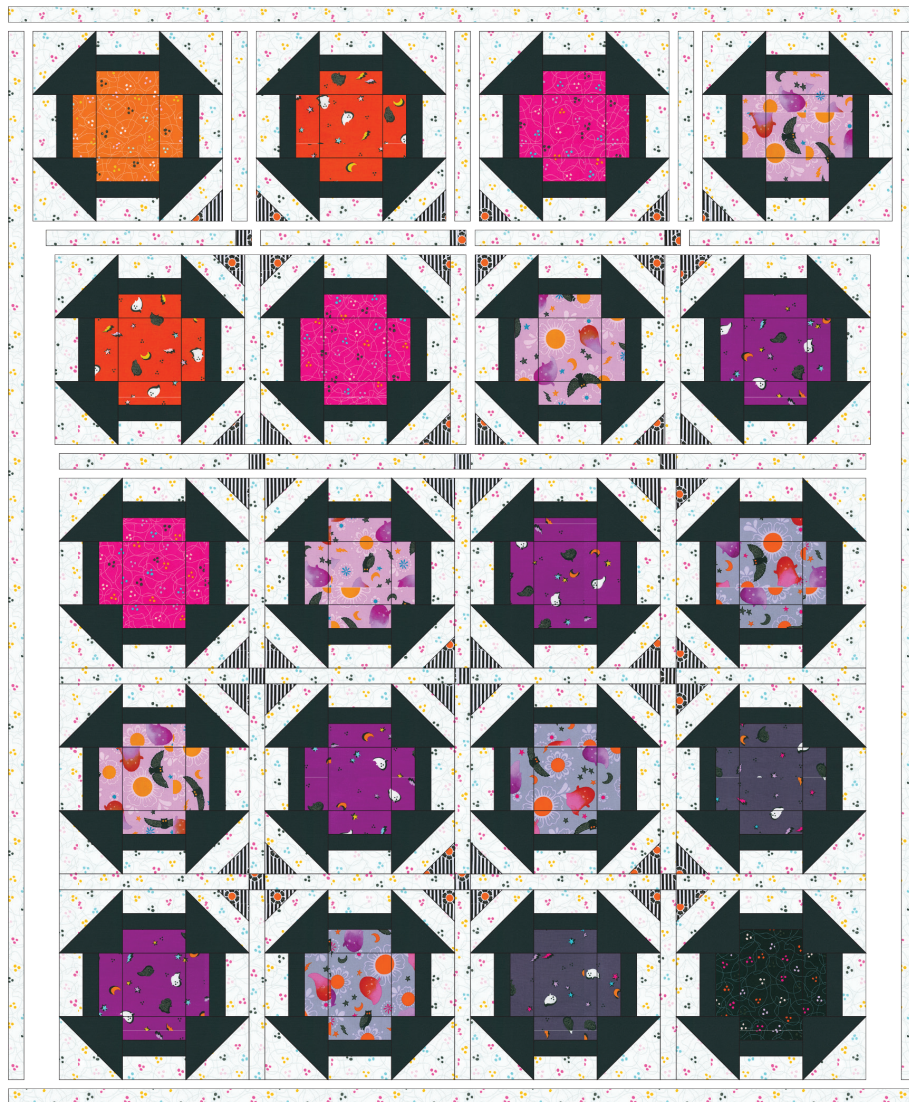


Make four Fabric J Blocks



Make four Fabric K Blocks

Assemble the Quilt



Step 9: Arrange the Blocks together as indicated in the Quilt Assembly Diagram. Sew each row together, using sashing strips between each block. Press seams toward the sashing. Repeat to make five block rows.

Step 10: Gather three Fabric C cornerstone squares and four sashing strips. Sew each row together, using cornerstones between each sashing strip and at the beginning and end of each row. Press seams toward the sashing. Repeat to make four sashing rows.

Step 11: Sew the sashing and block rows together, pinning and nesting the seams. Press seams open or to the sashing.

Step 12: Sew the borders to the sides of the quilt center. Press toward the border. Sew the borders to the top and bottom of the quilt center. Press toward the border.

Your quilt top is complete! Baste, quilt, bind and enjoy!

This pattern may be used for personal purposes only and may not be reproduced in any form without the express permission from Robert Kaufman Fabrics. This pattern is not for resale. All patterns, unless otherwise attributed, are © Robert Kaufman Co., Inc. 2005-2022. All rights reserved.