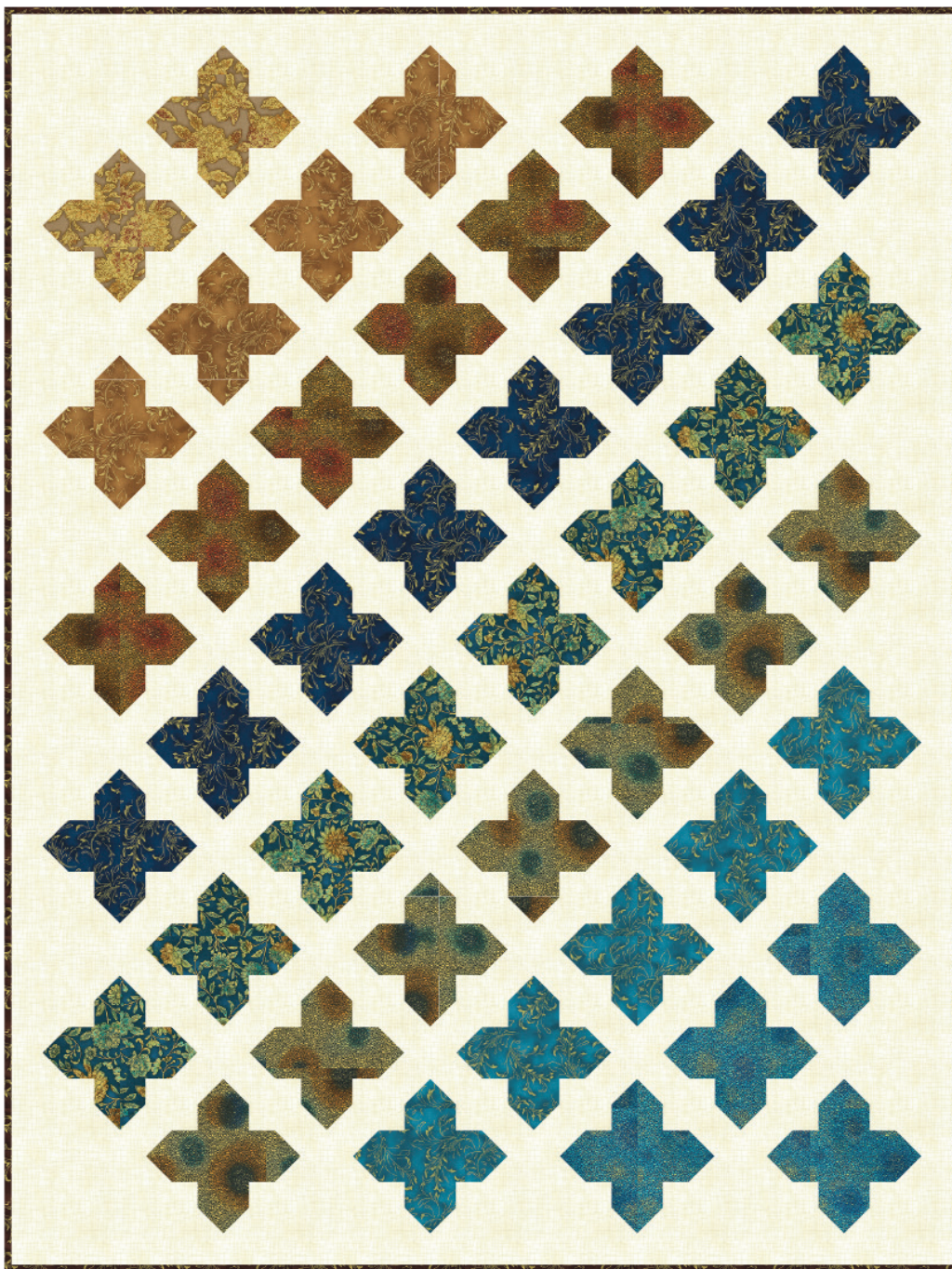


COLOR CASCADE

Designed by Ariga Mahmoudlou for RK
www.robertkaufman.com

Featuring

Fiorella



Finished quilt measures: 55" x 73"

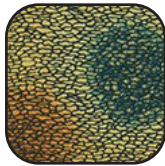


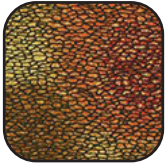
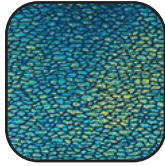




Difficulty Rating: **Beginner**

ROBERTKAUFMAN
F A B R I C S

For questions about this pattern, please email Patterns@RobertKaufman.com.

Fabric and Supplies Needed

Fabric amounts based on yardage that is 42" wide.

Color	Fabric	Name/SKU	Yardage	Color	Fabric	Name/SKU	Yardage
	A	SRKM-19548-175 NUTMEG	1/4 yard		F	SRKM-19226-169 EARTH	1/2 yard
	B	SRKM-19551-133 GOLD	1/4 yard		G	SRKM-19551-78 PEACOCK	1/3 yard
	C	SRKM-19226-165 COPPER	1/3 yard		H	SRKM-19226-213 TEAL	1/4 yard
	D	SRKM-19551-9 NAVY	1/2 yard		I	SRKP-16687-84 CREAM	2-7/8 yards
	E	SRKM-19549-213 TEAL	1/2 yard		Binding	SRKM-19551-165 COPPER	1/2 yard
<p>Copyright 2020, Robert Kaufman For individual use only - Not for resale</p>				<p>You will also need: 3-1/2 yards for backing</p>			

Notes Before You Begin

- Read through all of the instructions before beginning.
- All of the seam allowances are 1/4" unless otherwise noted.
- Press seam allowances open unless otherwise noted.
- Width of fabric (WOF) is equal to at least 42" wide.
- Right sides together has been abbreviated to RST.
- Remember to measure twice and cut once!

From Fabric A, cut:

one 3-1/2" x WOF strip. Subcut:
two 3-1/2" x 9-1/2" rectangles
four 3-1/2" squares

From each of Fabrics B and H, cut:

two 3-1/2" x WOF strips. Subcut:
four 3-1/2" x 9-1/2" rectangles
eight 3-1/2" squares

From Fabric C, cut:

three 3-1/2" x WOF strips. Subcut:
six 3-1/2" x 9-1/2" rectangles
twelve 3-1/2" squares

From each of Fabrics D and E, cut:

four 3-1/2" x WOF strips. Subcut:
eight 3-1/2" x 9-1/2" rectangles
sixteen 3-1/2" squares

From Fabric F, cut:

four 3-1/2" x WOF strips. Subcut:
seven 3-1/2" x 9-1/2" rectangles
fourteen 3-1/2" squares

From Fabric G, cut:

three 3-1/2" x WOF strips. Subcut:
five 3-1/2" x 9-1/2" rectangles
ten 3-1/2" squares

From Fabric I, cut:

fifteen 3-1/2" x WOF strips. Subcut:
eight 3-1/2" x 9-1/2" rectangles
eleven 3-1/2" x 6-1/2" rectangles
one hundred twenty-five 3-1/2" squares
six 2-1/2" x WOF strips. Sew together, end-to-end, then trim:
two 2-1/2" x 69-1/2" side outer borders
two 2-1/2" x 55-1/2" top/bottom outer borders
seventeen 2" x WOF strips. Subcut:
three hundred fifty-two 2" squares

From the Binding Fabric, cut:

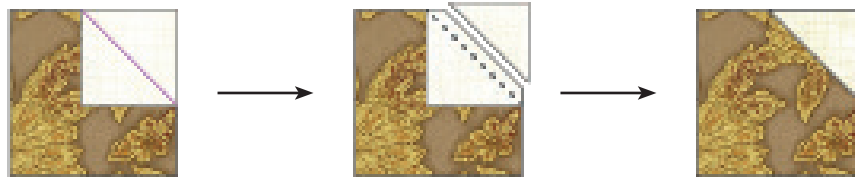
seven 2-1/2" x WOF strips

Stitch and Flip Note

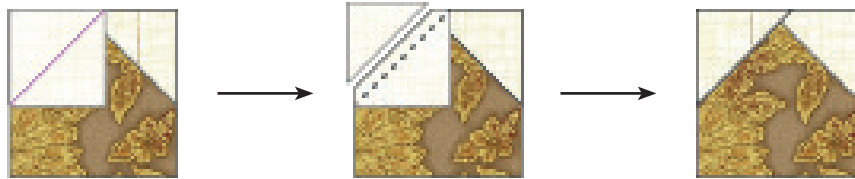
Each of the 2" Fabric I squares are used for the Stitch and Flip technique. You can mark a diagonal line on the back of each square, OR you can simply eyeball this line if you are comfortable with that method.

Assemble the Square Stitch and Flip Units

Step 1: Place a 2" Fabric I square in the upper right corner of a 3-1/2" Fabric A square, right sides together. Note the orientation of the marked diagonal line. Sew on the marked line, then trim away the excess fabric, leaving a 1/4" seam allowance. Press.



Repeat on the upper left corner with another 2" Fabric I square.



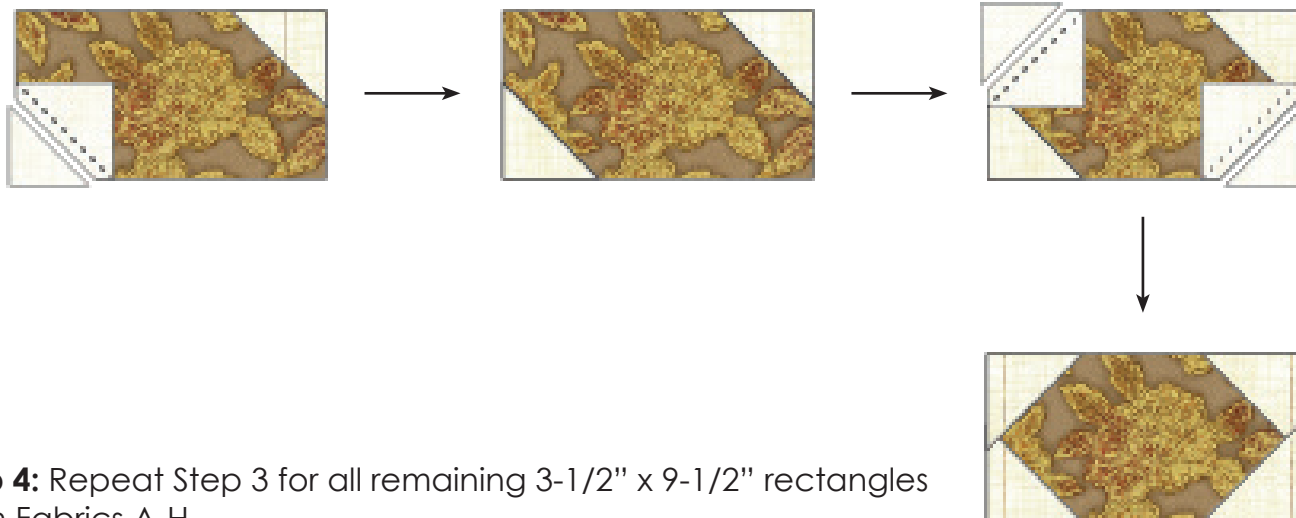
Step 2: Repeat Step 1 for all remaining 3-1/2" squares from Fabrics A-H.

Assemble the Rectangle Stitch and Flip Units

Step 3: Place a 2" Fabric I square in the upper right corner of a 3-1/2" x 9-1/2" Fabric A rectangle, right sides together. Note the orientation of the marked diagonal line. Sew on the marked line, then trim away the excess fabric, leaving a 1/4" seam allowance. Press.



Repeat on the remaining three corners with 2" Fabric I squares.



Step 4: Repeat Step 3 for all remaining 3-1/2" x 9-1/2" rectangles from Fabrics A-H.

Assemble the Quilt

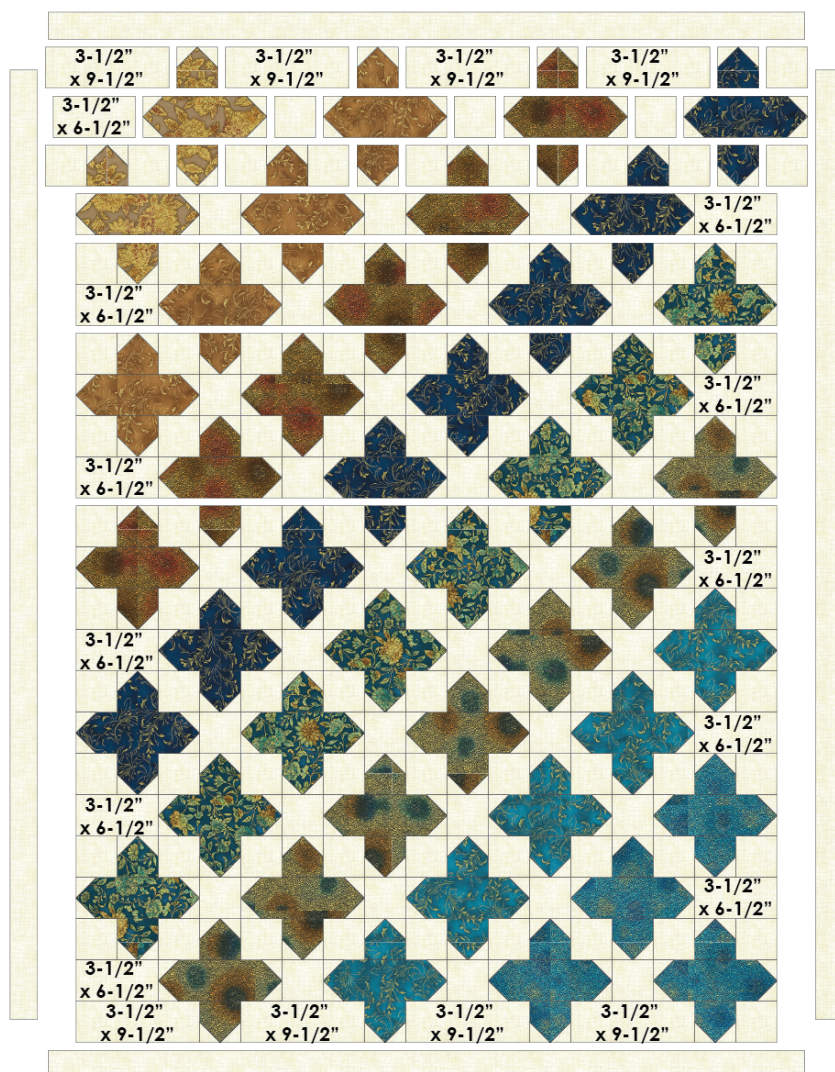
Step 5: Arrange the blocks into rows, as shown. Note the fabric placement and block orientation in the Quilt Assembly Diagram.

Step 6: Sew the blocks together to form rows. Press the seams toward the Fabric I squares and rectangles.

Step 7: Sew the rows together to form the quilt center. Press the row seams open.

Step 8: Sew the side outer borders to the sides of the quilt center. Press toward the borders. Sew the top and bottom outer borders to the quilt center. Press toward the borders.

Your quilt top is complete! Baste, quilt, bind and enjoy!



This pattern may be used for personal purposes only and may not be reproduced in any form without the express permission from Robert Kaufman Fabrics. This pattern is not for resale. All patterns, unless otherwise attributed, are © Robert Kaufman Co., Inc. 2005-2020. All rights reserved.