

CHARMING PANELS

Designed by Elise Lea for RK
www.robertkaufman.com

Featuring **GUSTAV KLIMT**

Charm Square
Friendly



Finished quilt measures: 48" x 68"







Difficulty Rating: **Beginner**

ROBERTKAUFMAN
F A B R I C S

For questions about this pattern, please email Patterns@RobertKaufman.com.

Fabric and Supplies Needed

Fabric amounts based on yardage that is 42" wide.

Color	Fabric	Name/SKU	Yardage	Color	Fabric	Name/SKU	Yardage
	A	SRKM-17180-133 GOLD	2/3 yard (one full panel)		D	SRKM-21352-133 GOLD	3/4 yard
	B	K001-1019 BLACK	1-1/8 yards		CHS-1083-42 GUSTAV KLIMT NETURAL COLORSTORY		One Charm Pack
	C	SRKM-18657-2 BLACK	1/4 yard		Binding* K001-1019 BLACK <i>*Also used for Fabric B</i>		1/2 yard
Copyright 2022, Robert Kaufman For individual use only - Not for resale				You will also need: 3-1/8 yards for backing			

Notes Before You Begin

- Read through all of the instructions before beginning.
- All of the seam allowances are 1/4" unless otherwise noted.
- Press seam allowances open unless otherwise noted.
- Width of fabric (WOF) is equal to at least 42" wide.
- Right sides together has been abbreviated to RST.
- Remember to measure twice and cut once!

Cutting Instructions

From Fabric A, fussy cut:

one 23" x 43" center panel

From Fabric B, cut:

one 5" x WOF strip. Subcut:

four 5" squares for the HSTs

thirteen 2-1/2" x WOF strips. Sew nine strips together, end-to-end, then trim:

two 2-1/2" x 28-1/2" top/bottom Border 2 strips

two 2-1/2" x 44-1/2" side Border 2 strips

two 2-1/2" x 40-1/2" top/bottom Border 3 strips

two 2-1/2" x 56-1/2" top/bottom Border 3 strips

From the remainder of the strips, cut:

thirty-eight 2-1/2" x 4-1/2" rectangles

From Fabric C, cut:

four 1-1/4" x WOF strips. Sew four strips together, end-to-end, then trim:

two 1-1/4" x 43-1/2" top/bottom Border 1 strips

two 1-1/4" x 24-1/2" side Border 1 strips

From Fabric D, cut:

six 4-1/4" x WOF strips. Sew together, end-to-end, then trim:

two 4-1/2" x 60-1/2" side Border 4 strips

two 4-1/2" x 48-1/2" top/bottom Border 4 strips

From the Charm Pack:

set aside two squares for the HSTs

From the remaining charm squares, cut:

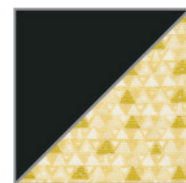
thirty-eight 2-1/2" x 4-1/2" rectangles, referring to the cover image for exact fabric uses and placements

From the Binding Fabric, cut:

six 2-1/2" x WOF strips

Assemble the Half-Square Triangles (HSTs)

Step 1: Pair a 5" Fabric B square with a 5" Charm square, RST. Mark a diagonal line on the wrong side of one square. Sew 1/4" away from both sides of the marked line. Cut on the marked line, creating two half-square triangles (HSTs). Press toward the darker fabric. Trim to 4-1/2" square. Repeat to make a total of four HSTs



Assemble the Pieced Borders

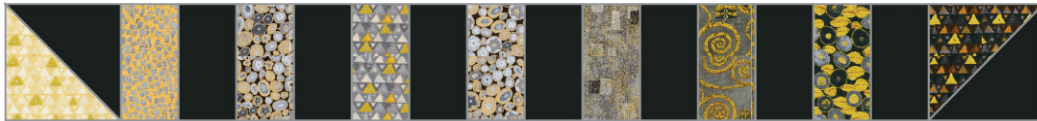
Step 2: Gather:

seven 2-1/2" x 4-1/2" Fabric B rectangles

seven 2-1/2" x 4-1/2" rectangles cut from charm squares in the fabrics shown in the diagram for the top border

Sew together, as shown, following the fabric placement shown in the diagram. Press the seams to one side or toward the darker fabric.

Step 3: Sew one HST to each end, noting the orientation in the diagram. Press. This is the top Pieced Border. Repeat to make the bottom Pieced Border.

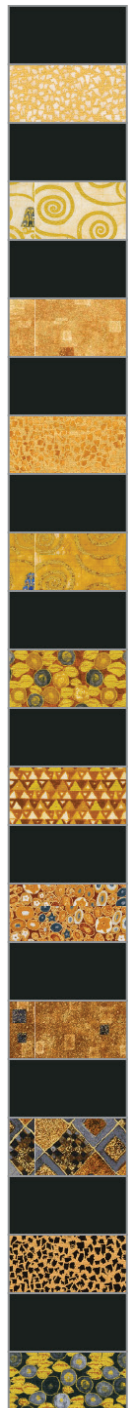


Step 4: Gather:

twelve 2-1/2" x 4-1/2" Fabric B rectangles

twelve 2-1/2" x 4-1/2" rectangles cut from charm squares in the fabrics shown in the diagram for the side border

Sew together, as shown, following the fabric placement shown in the diagram. Press the seams to one side or toward the darker fabric. This is the left Pieced Border. Repeat to make the right Pieced Border.



Assemble the Quilt



Step 5: Sew the side Border 1 pieces to the sides of the quilt center. Press toward the borders. Sew the top and bottom Border 1 pieces to the quilt center. Press toward the borders.

Step 6: Sew the side Border 2 pieces to the sides of the quilt center. Press toward the borders. Sew the top and bottom Border 2 pieces to the quilt center. Press toward the borders.

Step 7: Sew the side Pieced Border pieces to the sides of the quilt center. Press toward the borders. Sew the top and bottom Pieced Border pieces to the quilt center. Press toward the borders.

Step 8: Sew the side Border 3 pieces to the sides of the quilt center. Press toward the borders. Sew the top and bottom Border 3 pieces to the quilt center. Press toward the borders.

Step 9: Sew the side Border 4 pieces to the sides of the quilt center. Press toward the borders. Sew the top and bottom Border 4 pieces to the quilt center. Press toward the borders.

Your quilt top is complete! Baste, quilt, bind and enjoy!

This pattern may be used for personal purposes only and may not be reproduced in any form without the express permission from Robert Kaufman Fabrics. This pattern is not for resale. All patterns, unless otherwise attributed, are © Robert Kaufman Co., Inc. 2005-2022. All rights reserved.