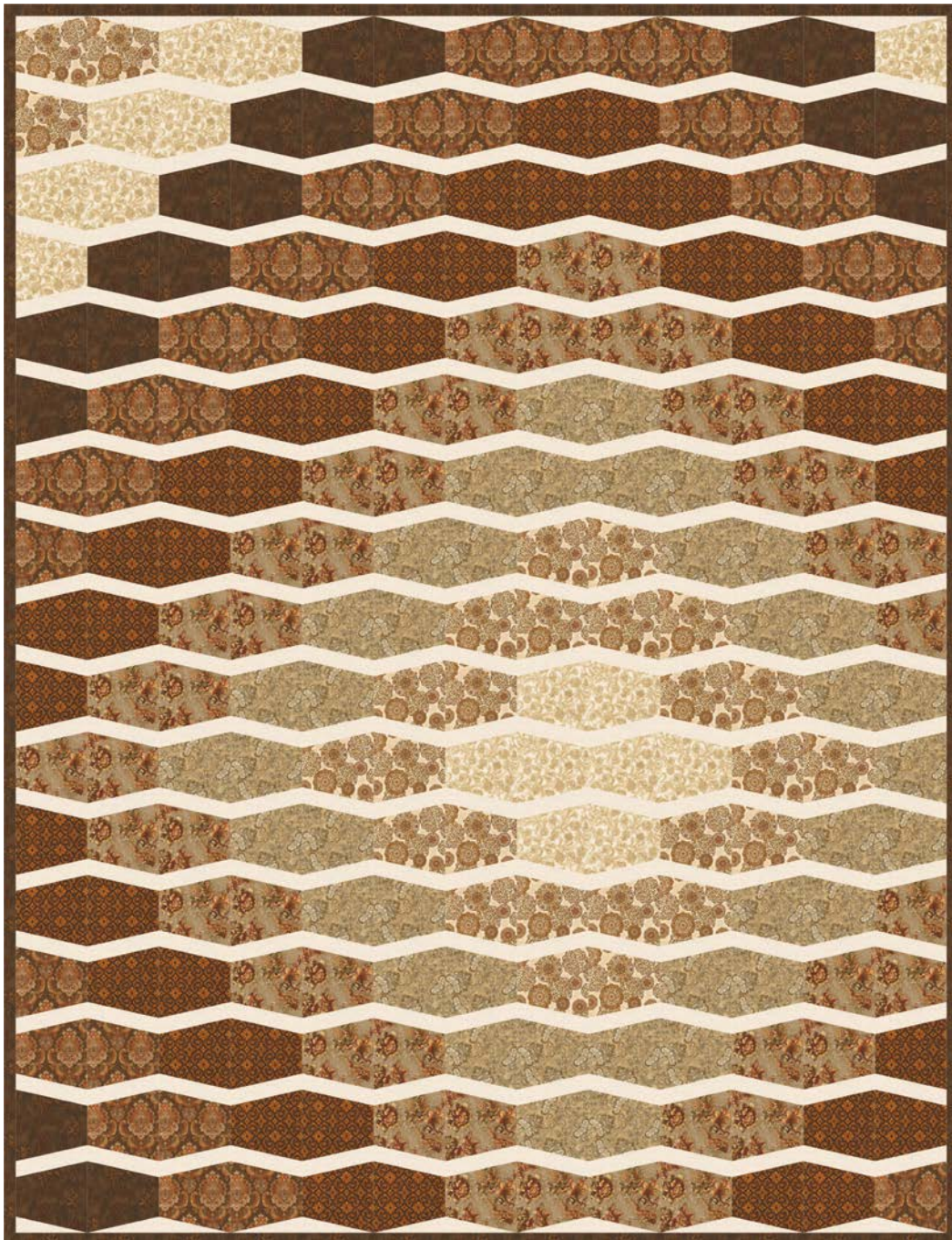


Cascade

Designed by Robert Kaufman Fabrics

Featuring

La Scala



Finished quilt measures: 80" x 104"

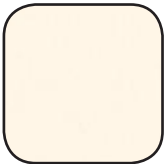




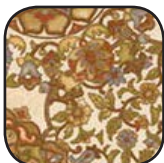


Shown in "Parchment" colorstory. For other colorstories see pages 5 & 6.

Pattern Level: Confident Beginner

*"I have basic block construction down
and would like to learn a new trick!"*

ROBERT KAUFMAN
F A B R I C S

Fabric and Supplies Needed

Color	Fabric	Name/SKU	Yardage	Color	Fabric	Name/SKU	Yardage
	A	K001-1181 IVORY	2-1/2 yards		E	SRK-14848-265 PARCHMENT	1-1/8 yard
	B	SRK-14845-265 PARCHMENT	1-1/2 yard		F	SRK-14849-265 PARCHMENT	5/8 yard
	C	SRK-14846-265 PARCHMENT	1-3/8 yard		G	SRK-14850-265 PARCHMENT	1 yard
	D	SRK-14847-265 PARCHMENT	1-3/4 yard		H	SRK-14851-16 BROWN	3/4 yard
<p style="color: red;">For individual use only - Not for resale</p> <p>Copyright 2014, Robert Kaufman</p>				<p>You will also need:</p> <p>5/8 yard Binding</p> <p>7-1/2 yards Backing Fabric and Batting</p> <p>Accuquilt Tumbler 6-1/2" die or template plastic</p>			

Notes Before You Begin

- Please read through all of the instructions before beginning.
 - All of the seam allowances are 1/4" unless otherwise noted.
 - Width of fabric (WOF) is equal to at least 42" wide.
 - Press all seam allowances open after each seam is sewn, unless otherwise noted.
 - Remember to measure twice and cut once!
- If you are not using the Accuquilt Tumbler die, print one copy of the template on page 7 at 100% and trace to template plastic. Cut out along the seam allowance line and use to cut all of the Tumbler pieces.

Cutting Instructions

Fabric A

- Cut ten strips 8" x WOF, then subcut each strip into twenty-four strips 1-3/4" x 8".

Fabric B

- Cut forty-six tumbler pieces.

Fabric C

- Cut forty-two tumbler pieces.

Fabric D

- Cut thirty-nine tumbler pieces.

Fabric E

- Cut thirty-two tumbler pieces.

Fabric F

- Cut sixteen tumbler pieces.

Fabric G

- Cut twenty-seven tumbler pieces.

Fabric H

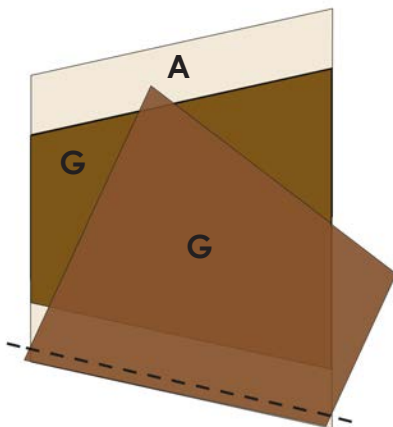
- Cut nineteen tumbler pieces.

Assembly Instructions

Follow the assembly diagram on page 4 to layout the tumbler pieces into columns, prior to sewing them together.

Begin with the top of column 1:

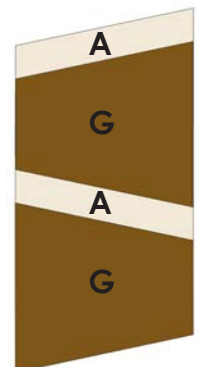
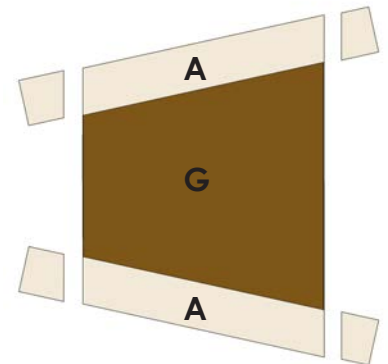
- Sew a Fabric A strip to the top and bottom of a Fabric G Tumbler. Trim the excess Fabric A from the sides to straighten the edges.



- Sew a Fabric G tumbler to the bottom edge of the A/G unit. Be sure to alternate the direction the tumblers face.

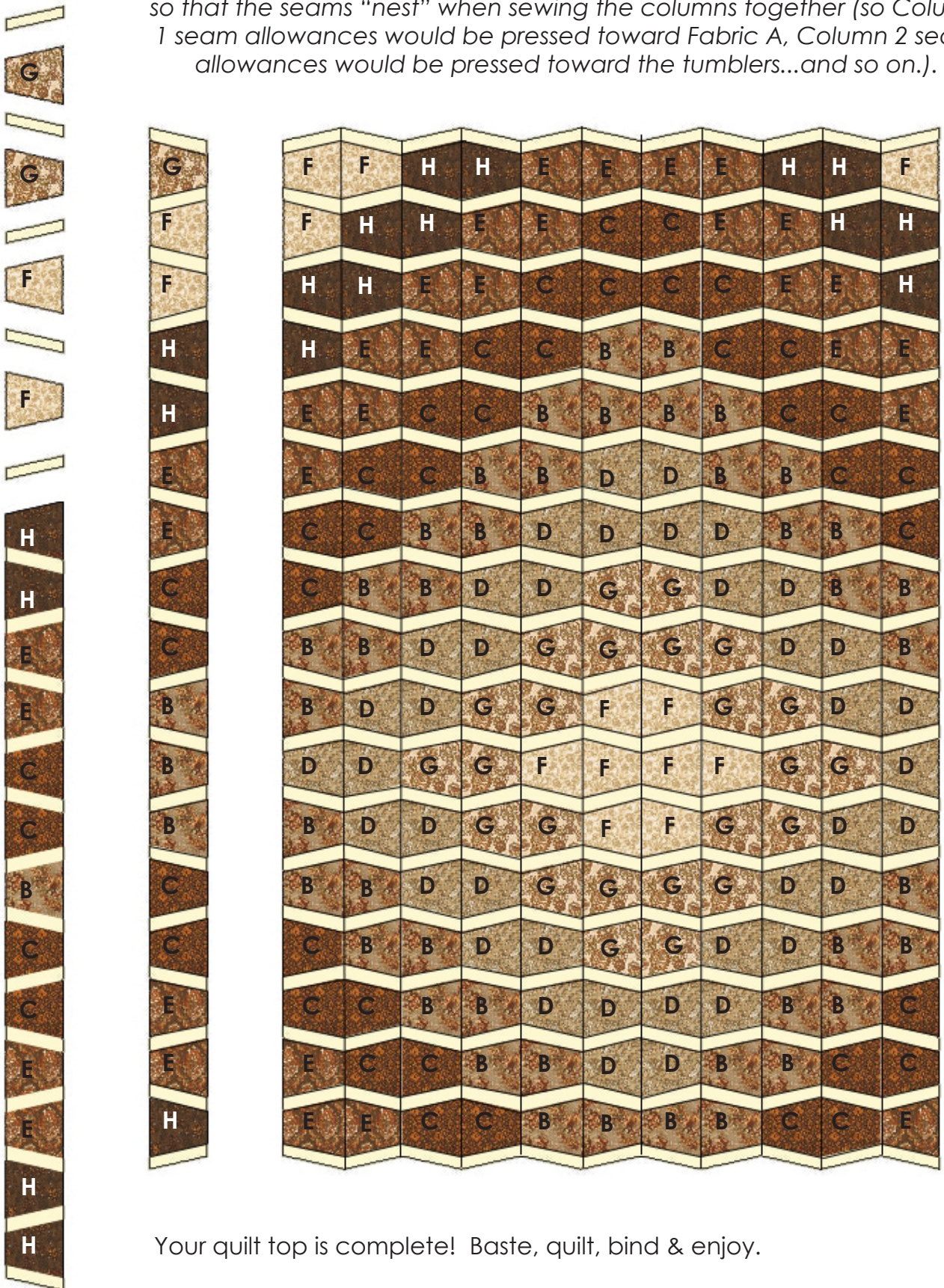
- Continue sewing and trimming the Fabric A strips and tumblers until you reach the end of the column. Finish the column with a Fabric A strip.

Check your column every few pieces to make sure that it is vertically straight.



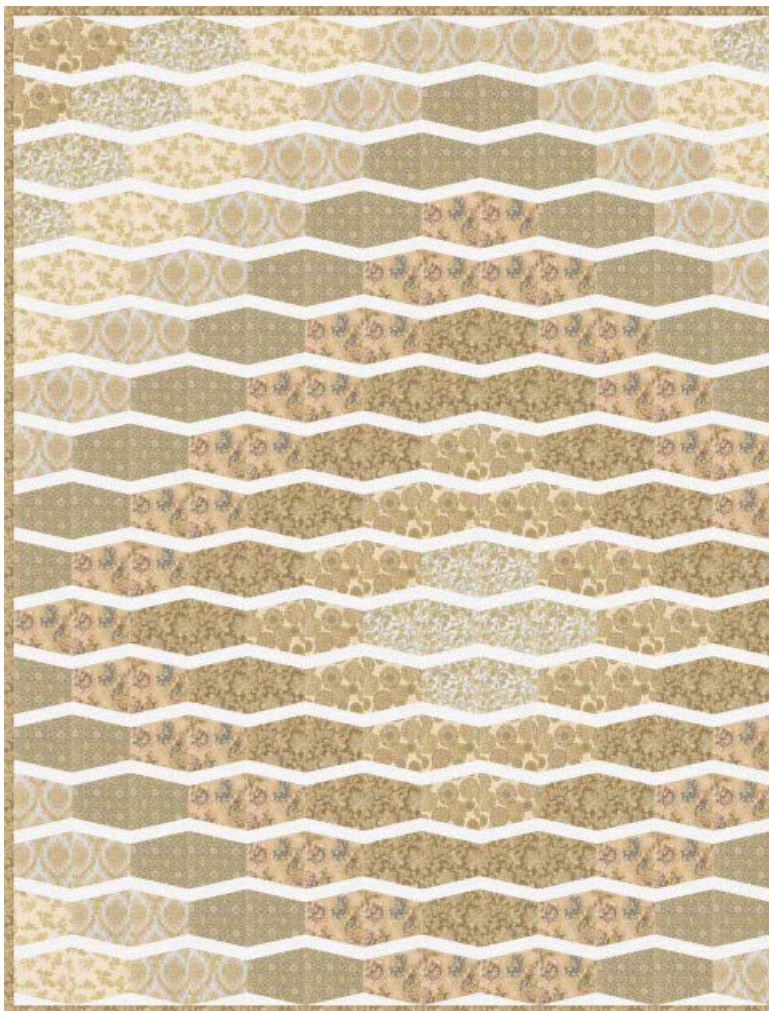
- Sew thirteen columns of seventeen tumblers each and then sew the columns together, matching seams, to complete quilt top.

Tip: Press the seam allowances of each column in the opposite direction, so that the seams "nest" when sewing the columns together (so Column 1 seam allowances would be pressed toward Fabric A, Column 2 seam allowances would be pressed toward the tumblers...and so on.).











Your quilt top is complete! Baste, quilt, bind & enjoy.

Cascade: Champagne Colorstory



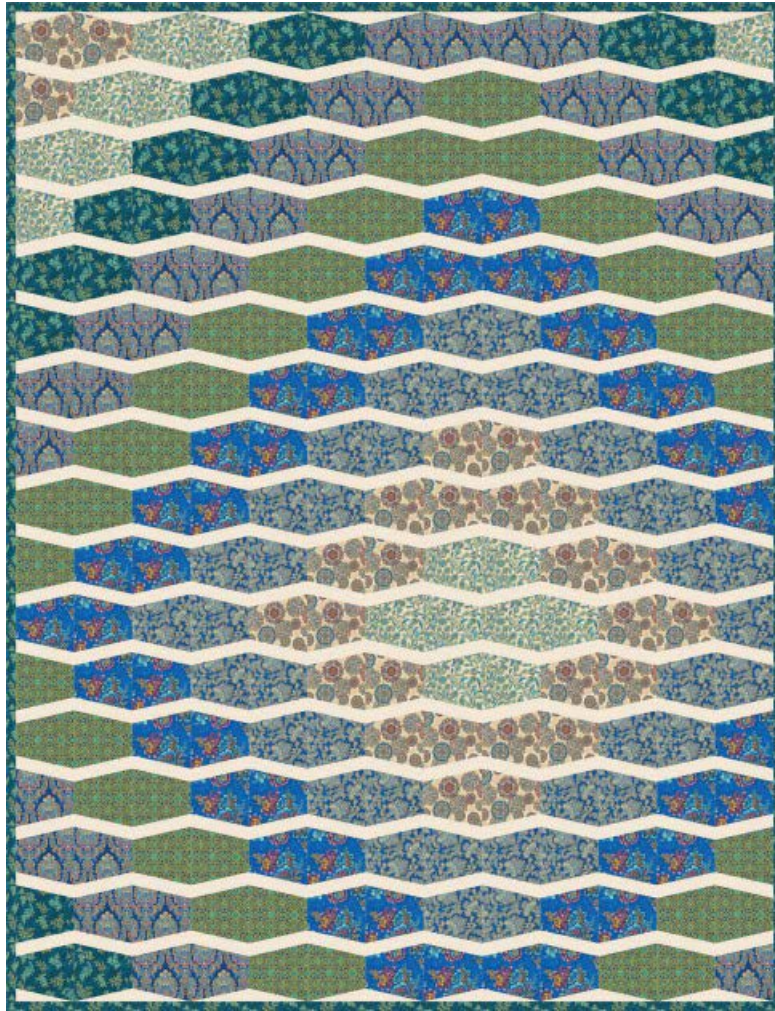
Fabric and Supplies Needed

Color	Fabric	Name/SKU	Yardage	Color	Fabric	Name/SKU	Yardage
	A	K001-1387 WHITE	2-1/2 yards		E	SRKM-14848-154 CHAMPAGNE	1-1/8 yard
	B	SRKM-14845-154 CHAMPAGNE	1-1/2 yard		F	SRKM-14849-154 CHAMPAGNE	5/8 yard
	C	SRKM-14846-154 CHAMPAGNE	1-3/8 yard		G	SRKM-14850-154 CHAMPAGNE	1 yard
	D	SRKM-14847-154 CHAMPAGNE	1-3/4 yard		H	SRKM-14851-154 CHAMPAGNE	3/4 yard








You will also need:

5/8 yard Binding, 7-1/2 yards Backing Fabric and Batting
Accuquilt Tumbler 6-1/2" die or template plastic

Cascade: Bright Colorstory



Fabric and Supplies Needed

Color	Fabric	Name/SKU	Yardage	Color	Fabric	Name/SKU	Yardage
	A	K001-1181 IVORY	2-1/2 yards		E	SRKM-14848-195 BRIGHT	1-1/8 yard
	B	SRKM-14845-195 BRIGHT	1-1/2 yard		F	SRKM-14849-195 BRIGHT	5/8 yard
	C	SRKM-14846-195 BRIGHT	1-3/8 yard		G	SRKM-14850-195 BRIGHT	1 yard
	D	SRKM-14847-195 BRIGHT	1-3/4 yard		H	SRKM-14851-195 BRIGHT	3/4 yard

You will also need:
 5/8 yard Binding, 7-1/2 yards Backing Fabric and Batting
 Accuquilt Tumbler 6-1/2" die or template plastic

Cascade Tumbler Template

Print one copy at 100% and trace to template plastic.

