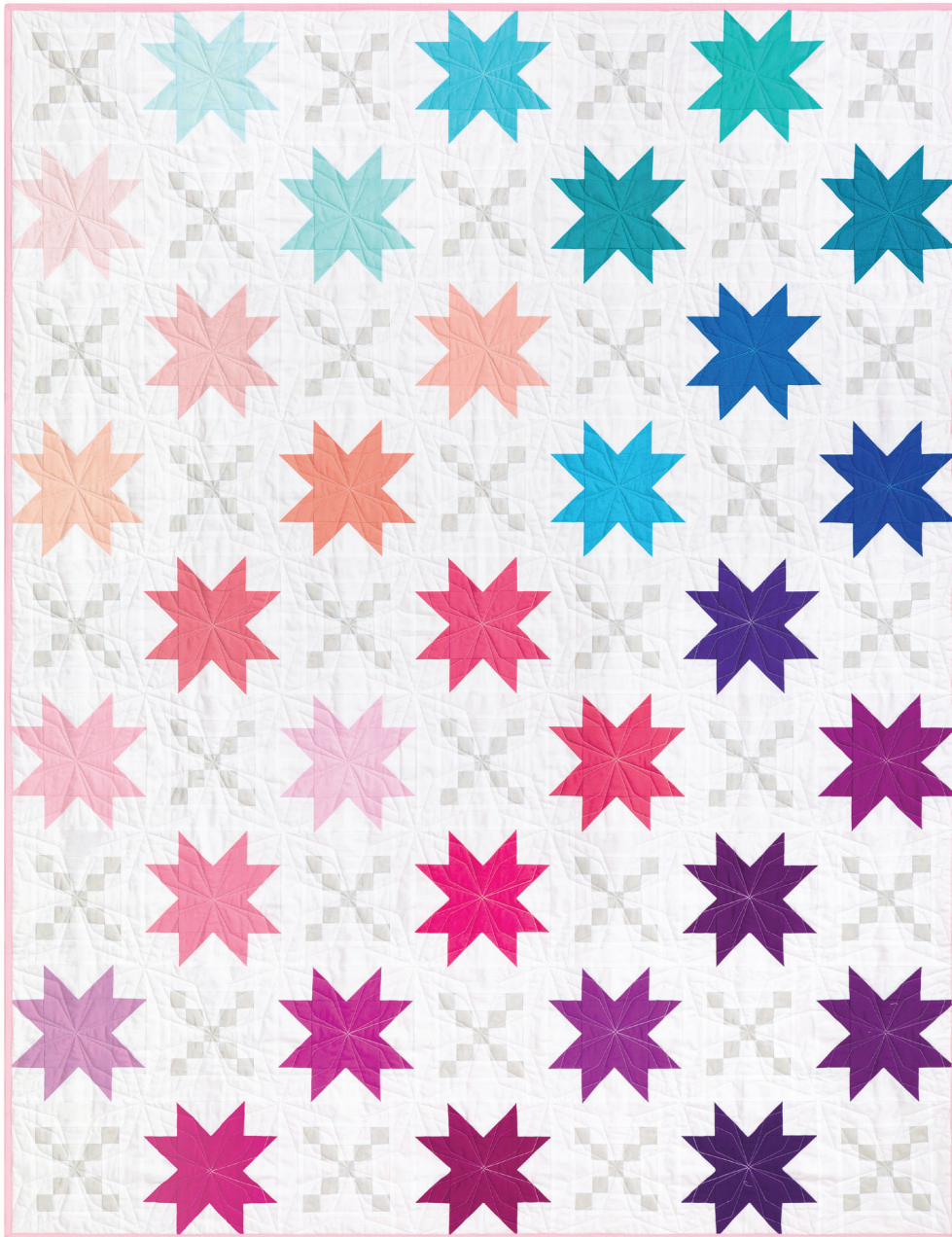


# CANDY STARS

Designed by Ariga Mahmoudlou for RK  
[www.robertkaufman.com](http://www.robertkaufman.com)

Featuring **KONA**<sup>®</sup>  
cotton solids



Finished quilt measures: 56" x 72"

Difficulty Rating: **Intermediate**

**ROBERTKAUFMAN**  
F A B R I C S

For questions about this pattern, please email [Patterns@RobertKaufman.com](mailto:Patterns@RobertKaufman.com).

## Fabric and Supplies Needed

*Fabric amounts based on yardage that is 42" wide.*

Color	Fabric	Name/SKU	Yardage	Color	Fabric	Name/SKU	Yardage
	A	K001-1387 WHITE	3-1/2 yards		J	K001-1225 MED. PINK	1/4 yard
	B	K001-839 DOVE	5/8 yard		K	K001-1228 MELON	1/4 yard
	C	K001-1005 AQUA	1/4 yard		L	K001-1281 PEACH	1/4 yard
	D	K001-1011 BAHAMA BLUE	1/4 yard		M	K001-1283 PEARL PINK	1/4 yard
	E	K001-1048 BRT. PERI	1/4 yard		N	K001-143 PETAL	1/4 yard
	F	K001-1066 CERISE	1/4 yard		O	K001-1485 DK. VIOLET	1/4 yard
	G	K001-1144 BELLINI	1/4 yard		P	K001-151 CYAN	1/4 yard
	H	K001-1176 ICE PEACH	1/4 yard		Q	K001-185 CREAMSICLE	1/4 yard
	I	K001-1214 MAGENTA	1/4 yard		R	K001-188 HIBISCUS	1/4 yard

Fabric amounts based on yardage that is 42" wide.

Color	Fabric	Name/SKU	Yardage	Color	Fabric	Name/SKU	Yardage
	S	K001-190 CAMELLIA	1/4 yard		AA	K001-487 CORSAGE	1/4 yard
	T	K001-261 BUBBLE GUM	1/4 yard		BB	K001-489 GUMDROP	1/4 yard
	U	K001-419 AZALEA	1/4 yard		CC	K001-491 JAMAICA	1/4 yard
	V	K001-440 BREAKERS	1/4 yard		DD	K001-494 MALIBU	1/4 yard
	W	K001-447 PUNCH	1/4 yard		EE	K001-80 MULBERRY	1/4 yard
	X	K001-45 POOL	1/4 yard		FF	K001-846 SEA GLASS	1/4 yard
	Y	K001-451 VALENTINE	1/4 yard		GG	K001-848 BLUEPRINT	1/4 yard
	Z	K001-473 GERANIUM	1/4 yard		Binding*	K001-1225 MED. PINK <small>*Also used for Fabric J</small>	1/2 yard
Copyright 2020, Robert Kaufman For individual use only - Not for resale				You will also need: 3-5/8 yards for backing			

## Notes Before You Begin

- Read through all of the instructions before beginning.
- All of the seam allowances are 1/4" unless otherwise noted.
- Press seam allowances open unless otherwise noted.
- Width of fabric (WOF) is equal to at least 42" wide.
- Right sides together has been abbreviated to RST.
- Remember to measure twice and cut once!

## Cutting Instructions

### **From Fabric A, cut:**

- three 3-1/2" x WOF strips. Cut one strip into two 21" long pieces. Set aside all four pieces for strip piecing the Chain Blocks.
- nine 3" x WOF strips. Subcut:
  - one hundred twenty-four 3" squares for the HSTs
- eight 2-1/2" x WOF strips. Subcut:
  - one hundred twenty-four 2-1/2" squares for the Star Block Corners
- twenty-three 2" x WOF strips. Subcut:
  - sixty-four 2" x 8-1/2" rectangles for the Chain Blocks
  - sixty-four 2"x 5-1/2" rectangles for the Chain Blocks
- eleven 1-1/2" x WOF strips. Cut two strips into two 21" long pieces each. Set these four pieces, plus four full strips aside for strip piecing the Chain Blocks. From the six remaining strips, subcut:
  - sixty-four 1-1/2" x 3-1/2" rectangles for the Chain Blocks.

### **From Fabric B, cut:**

- twelve 1-1/2" x WOF strips. Cut three strips into two 21" long pieces each. Set aside all strips (full and partial) for strip piecing the Chain Blocks.

### **From each of Fabrics C-GG, cut:**

- one 4-1/2" x WOF strip. Subcut:
  - one 4-1/2" square for the Star Block Center
  - Trim the remainder of the strip to 3" wide, then subcut:
    - ◆ four 3" squares for the HSTs

### **From the Binding Fabric, cut:**

- seven 2-1/2" x WOF strips

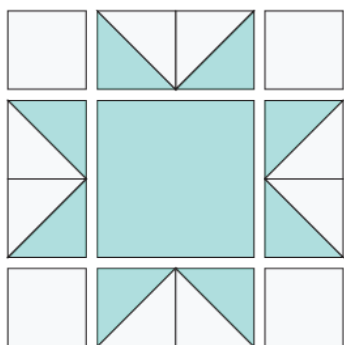
## Assemble the Half-Square Triangles

**Step 1:** Pair a 3" Fabric A square with a 3" Fabric C square, RST. Mark a diagonal line on the wrong side of one square. Sew  $\frac{1}{4}$ " away from both sides of the marked line. Cut on the marked line, creating two half-square triangles (HSTs). Press toward the darker fabric. Trim to  $2\frac{1}{2}$ " square. Repeat to make eight A/C HSTs.



**Step 2:** Repeat Step 1 to make eight HSTs from each of Fabrics D-GG, each paired with a 3" Fabric A square.

## Assemble the Star Blocks



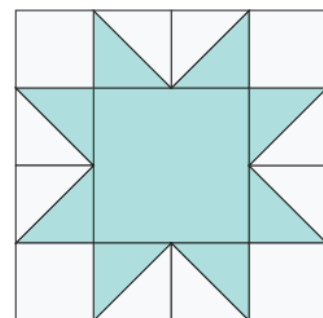
**Step 3:** Gather:  
four  $2\frac{1}{2}$ " Fabric A squares  
eight A/C HSTs  
the  $4\frac{1}{2}$ " Fabric C square

Arrange the units as shown, to form the block. Note the fabric placement and block orientation in the Block Assembly Diagram.

**Step 4:** Sew the HSTs together to form pairs. Press. Sew the units together to form the rows. Press the seams away from the HST pairs.

**Step 5:** Sew the rows together, nesting the seams and pressing the seams to one side to form the block.

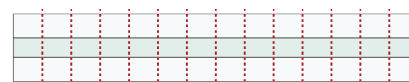
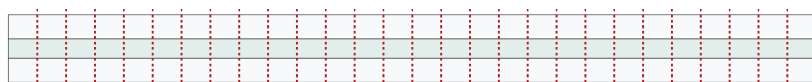
The resulting Star Block should measure  $8\frac{1}{2}$ " square. Repeat Steps 3-5 to make one Star Block from each of Fabrics D-GG.



## Assemble the Strip Set Units

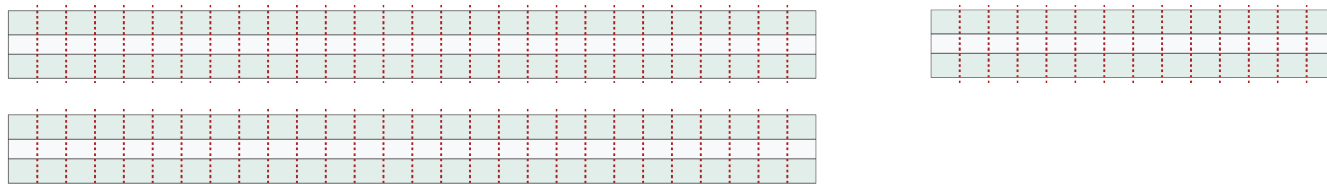
**Step 6:** Sew together  $1\frac{1}{2}$ " wide strips in this order, along the longest edge:  
Fabric A + Fabric B + Fabric A

Press the seam toward the darker fabric. Repeat to make one half-strip set like this. Cut each set into  $1\frac{1}{2}$ " wide units, for a total of thirty-two  $1\frac{1}{2}$ " x  $3\frac{1}{2}$ " units.



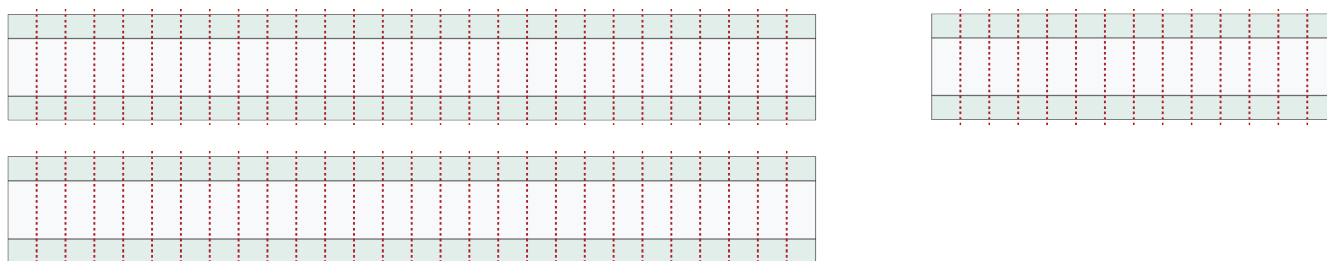


**Step 7:** Sew together 1-1/2" wide strips in this order, along the longest edge:  
Fabric B + Fabric A + Fabric B



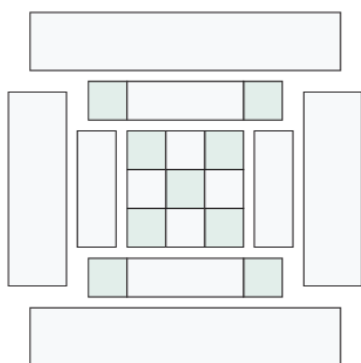
Press the seam toward the darker fabric. Repeat to make two full strip sets and one half-strip set like this. Cut each set into 1-1/2" wide units, for a total of sixty-four 1-1/2" x 3-1/2" units.

**Step 8:** Sew together strips in this order, along the longest edge:  
1-1/2" wide Fabric B + 3-1/2" wide Fabric A + 1-1/2" wide Fabric B



Press the seam toward the darker fabric. Repeat to make two full strip sets and one half-strip set like this. Cut each set into 1-1/2" wide units, for a total of sixty-four 1-1/2" x 5-1/2" units.

## Assemble the Chain Blocks



**Step 9:** Gather:  
two units from Step 7  
one unit from Step 6

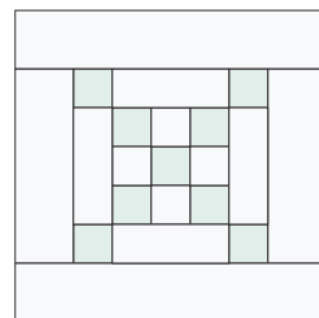
**Step 10:** Sew the rows together, nesting the seams and pressing the seams to one side to form the block center.

**Step 11:** Sew a 1-1/2" x 3-1/2" Fabric A rectangle to the left and right edges of the block center. Press.

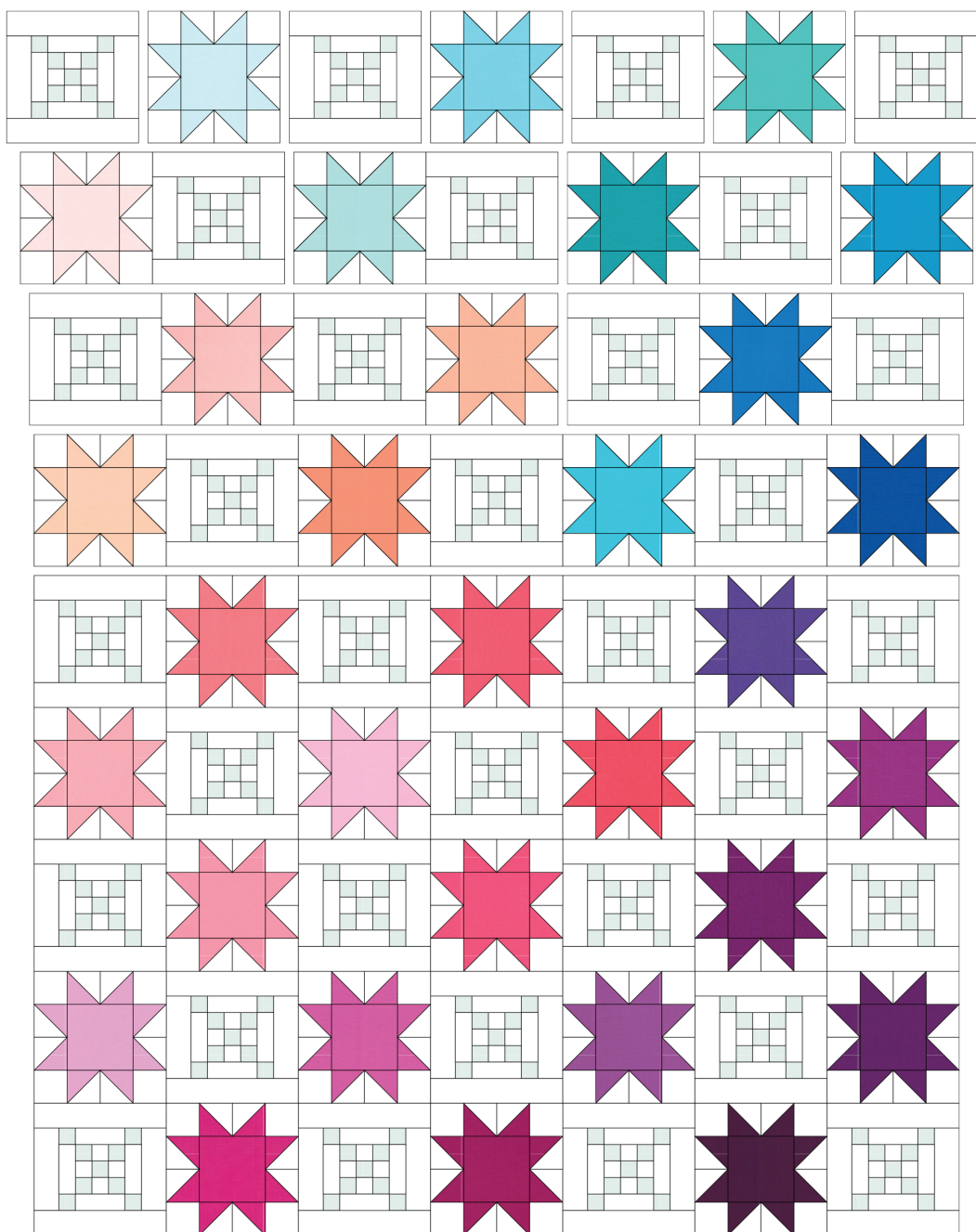
**Step 12:** Sew a Step 8 unit to the top and bottom edges of the block center. Press.

**Step 13:** Sew a 2" x 5-1/2" Fabric A rectangle to the left and right edges of the block center. Press. Sew a 2" x 8-1/2" Fabric A rectangle to the top and bottom edges of the block center. Press.

The resulting Chain Block should measure 8-1/2" square. Repeat Steps 9-13 to make thirty-two Chain Blocks.



## Assemble the Quilt



**Step 14:** Arrange the blocks into nine rows of seven blocks. Note the fabric placement and block orientation in the Quilt Assembly Diagram.

**Step 15:** Sew the blocks together to form rows. Press the rows to the left in the odd numbered rows and to the right in the even numbered rows.

**Step 16:** Sew the rows together to form the quilt center. Press the row seams open

Your quilt top is complete! Baste, quilt, bind and enjoy!

This pattern may be used for personal purposes only and may not be reproduced in any form without the express permission from Robert Kaufman Fabrics. This pattern is not for resale. All patterns, unless otherwise attributed, are © Robert Kaufman Co., Inc. 2005-2020. All rights reserved.