

BURST OF COLOR

Designed by Ariga Wilson for RK
www.robertkaufman.com

Featuring ARTISAN
BATIKS

Watercolor Blossoms 



Finished quilt measures: 42" x 50"





Difficulty Rating: **Beginner**

ROBERTKAUFMAN
F A B R I C S

For questions about this pattern, please email Patterns@RobertKaufman.com.

Fabric and Supplies Needed

Fabric amounts based on yardage that is 42" wide.

Color	Fabric	Name/SKU	Yardage	Color	Fabric	Name/SKU	Yardage
		CHS-986-42 WATERCOLOR BLOSSOMS	Two Charm Packs		B	SRK-20464-21 LILAC	2/3 yard
	A	AMD-7000-62 INDIGO	1/3 yard		Binding*	AMD-7000-62 INDIGO <small>*Also used for Fabric A</small>	1/2 yard
Copyright 2021, Robert Kaufman For individual use only - Not for resale				You will also need: 3 yards for backing			

Notes Before You Begin

- Read through all of the instructions before beginning.
- All of the seam allowances are 1/4" unless otherwise noted.
- Press seam allowances open unless otherwise noted.
- Width of fabric (WOF) is equal to at least 42" wide.
- Right sides together has been abbreviated to RST.
- Remember to measure twice and cut once!

Cutting Instructions

From Fabric A, cut:

seven 1-1/2" x WOF strips. Subcut:

two 1-1/2" x 40-1/2" side inner borders

two 1-1/2" x 34-1/2" top/bottom inner borders

eighty 1-1/2" squares

From Fabric B, cut:

five 4-1/2" x WOF strips. Sew together, end-to-end, then trim:

two 4-1/2" x 42-1/2" side outer borders

two 4-1/2" x 42-1/2" top/bottom outer borders

From the Binding Fabric, cut:

five 2-1/2" x WOF strips

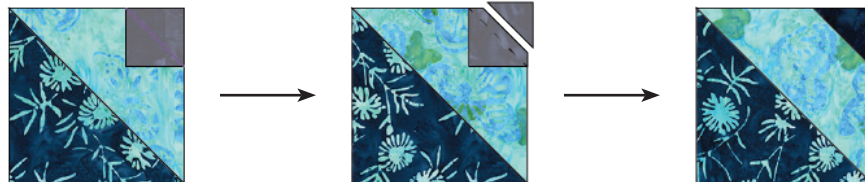
Assemble the Half-Square Triangles (HSTs)

Step 1: Pair one Charm Pack Square with a Charm Pack Square from another fabric, RST. Mark a diagonal line on the wrong side of one square. Sew $\frac{1}{4}$ " away from both sides of the marked line. Cut on the marked line, creating two half-square triangles (HSTs). Press toward the darker fabric. Trim to $4\frac{1}{2}$ " square. Repeat to make eighty $4\frac{1}{2}$ " HSTs, using a random assortment of fabric pairings from the Charm Pack.



Assemble the Blocks

Step 2: Place a $1\frac{1}{2}$ " Fabric A square in the upper right corner of an HST, right sides together. Note the orientation of the marked diagonal line and how the $1\frac{1}{2}$ " square is not placed at a corner with a seam. Sew on the marked line, then trim away the excess fabric, leaving a $\frac{1}{4}$ " seam allowance. Press. Repeat with all eighty HST units.



Step 3: Gather:
four completed Step 2 units

Arrange the units into two rows of two. Note the fabric placement and block orientation in the Block Assembly Diagram.

Step 4: Sew the squares together to form the rows. Press the seams in opposite directions.

Step 5: Sew the rows together, nesting the seams and pressing the seams to one side to form the block.

The Block should measure $8\frac{1}{2}$ " square. Repeat Steps 3-5 to make twenty Blocks.

Assemble the Quilt



Step 6: Arrange the blocks into five rows of four blocks. Note the fabric placement and block orientation in the Quilt Assembly Diagram.

Step 7: Sew the blocks together to form rows. Press the rows to the left in the odd numbered rows and to the right in the even numbered rows.

Step 8: Sew the rows together to form the quilt center. Press the row seams open.

Step 9: Sew the side inner borders to the sides of the quilt center. Press toward the borders. Sew the top and bottom inner borders to the quilt center. Press toward the borders.

Step 10: Sew the side outer borders to the sides of the quilt center. Press toward the borders. Sew the top and bottom outer borders to the quilt center. Press toward the borders.

Your quilt top is complete! Baste, quilt, bind and enjoy!

This pattern may be used for personal purposes only and may not be reproduced in any form without the express permission from Robert Kaufman Fabrics. This pattern is not for resale. All patterns, unless otherwise attributed, are © Robert Kaufman Co., Inc. 2005-2021. All rights reserved.