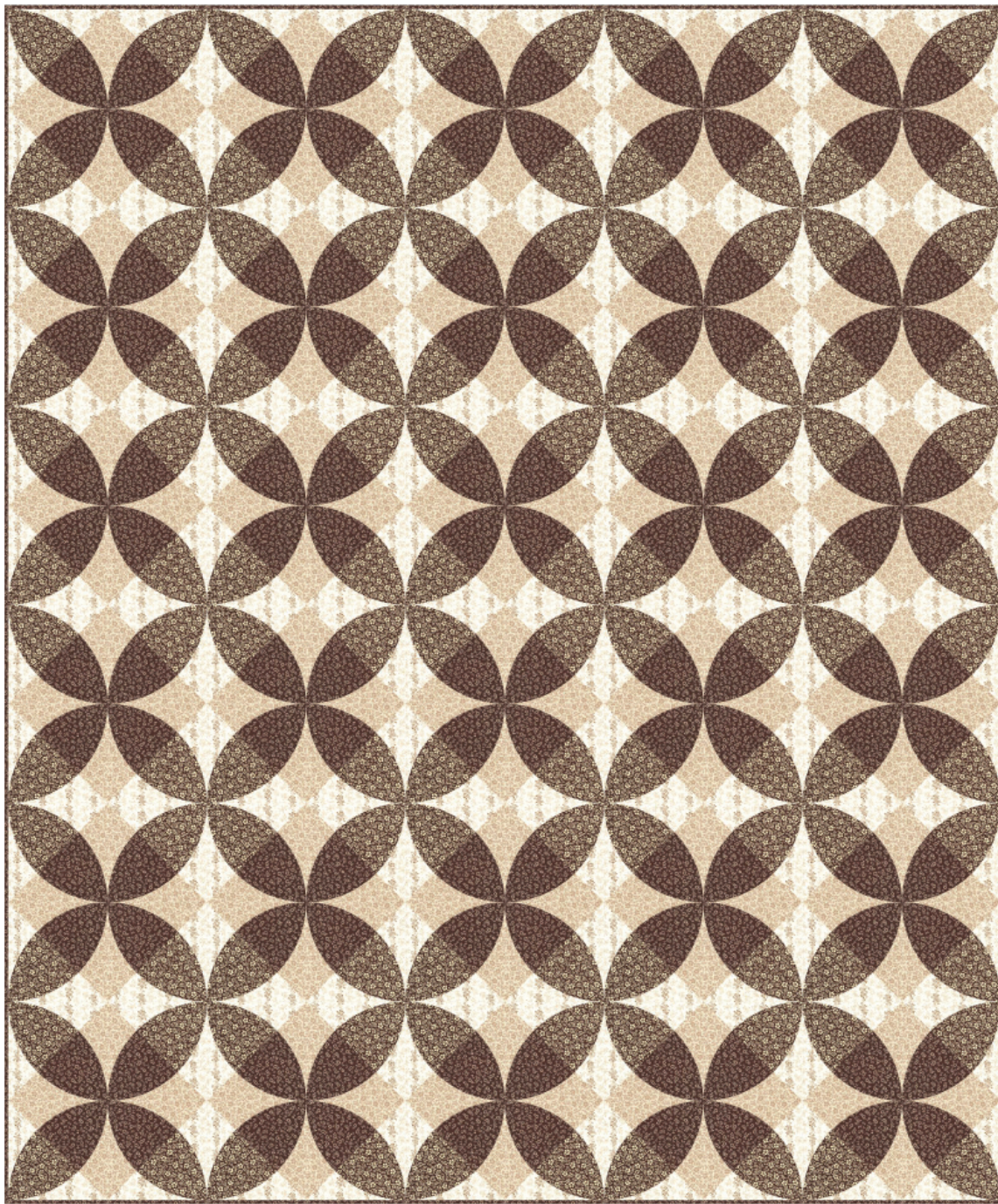


# BLOSSOM PEEL

Designed by Robert Kaufman Fabrics  
[www.robertkaufman.com](http://www.robertkaufman.com)

Featuring

petite garden  
SEVENBERRY®



Finished quilt measures: 60" x 72"

**Pattern Level: Advanced Expert**





*"My skills are sharp, so I'm ready to  
take on the hard stuff."*

**ROBERTKAUFMAN**  
F A B R I C S

For questions about this pattern, please email [Patterns@RobertKaufman.com](mailto:Patterns@RobertKaufman.com).

## Fabric and Supplies Needed

*Fabric amounts based on yardage that is 42" wide.*

Color	Fabric	Name/SKU	Yardage	Color	Fabric	Name/SKU	Yardage
	A	SB-6113D1-4 BROWN	2-1/2 yards		C	SB-6113D3-4 BROWN	2 yards
	B	SB-6113D3-3 NATURAL	2-5/8 yards		D	SB-6131D3-4 CHARCOAL	2-5/8 yards
Copyright 2017, Robert Kaufman For individual use only - Not for resale				You will also need: 4 yards for backing 5/8 yard for binding			

## Notes Before You Begin

- Read through all of the instructions before beginning.
- All of the seam allowances are 1/4" unless otherwise noted.
- Press seam allowances open unless otherwise noted.
- Width of fabric (WOF) is equal to at least 42" wide.
- Right sides together has been abbreviated to RST.
- Remember to measure twice and cut once!

## Cutting Instructions

### From Fabric A, cut:

one hundred twenty from Template 4

### From Fabric B, cut:

one hundred twenty from Template 3

### From Fabric C, cut:

one hundred twenty from Template 4

### From Fabric D, cut:

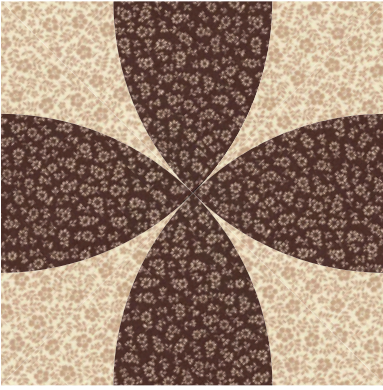
twenty-two from Template 1  
 twenty-two from Template 2  
 ninety-eight from Template 3

### From the binding fabric, cut:

seven 2-1/2" x WOF strips



## Assemble the A Blocks



*Tips for sewing curves: Shorten your stitch length. Use the needle down feature on your machine, if applicable. Pin at the center first, then at each end and then pin at midpoints between.*

**Step 1:** Gather and arrange the following, according to their placement in the Block Assembly Diagram:  
Four Fabric A/Template 4 pieces  
Four Fabric B/Template 3 pieces

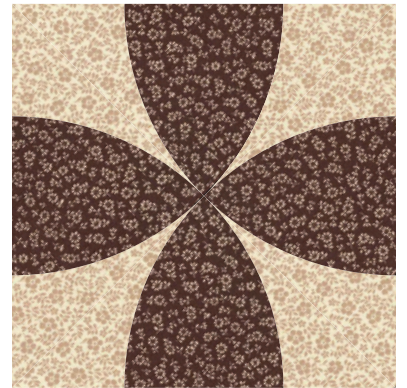
**Step 2:** Pin and sew a Template 4 piece to each side of one Template 3 piece. Clip the seams, taking care not to cut the seam allowance and press the seams in one direction. Repeat to create a second unit like this. Use one in Step 3 and set one aside for Step 4.



**Step 3:** Pin and sew a Template 3 piece to each remaining side of the Template 4 pieces. Clip the seams, taking care not to cut the seam allowance and press the seams in one direction.

**Step 4:** Sew a completed Step 3 unit to the unit set aside in Step 2. Clip the seams, taking care not to cut the seam allowance and press the seams in one direction.

Repeat Steps 1-4 to make thirty A Blocks.



## Assemble the B Blocks



*Tips for sewing curves: Shorten your stitch length. Use the needle down feature on your machine, if applicable. Pin at the center first, then at each end and then pin at midpoints between.*

**Step 5:** Gather and arrange the following, according to their placement in the Block Assembly Diagram:

Four Fabric C/Template 4 pieces

Four Fabric D/Template 3 pieces

Repeat Steps 1-4 to make twenty B Blocks.

## Assemble the Corner Blocks



**Step 6:** Gather and arrange the following, according to their placement in the Block Assembly Diagram:

One Fabric C/Template 4 piece

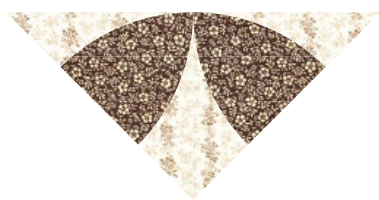
One Fabric D/Template 1 piece

One Fabric D/Template 2 piece

**Step 7:** Pin and sew the Template 1 and Template 2 pieces to each side of one Template 4 piece. Clip the seams, taking care not to cut the seam allowance and press the seams in one direction.

Repeat Step 7 to make four Corner Blocks.

## Assemble the Side Setting Blocks



**Step 8:** Gather and arrange the following, according to their placement in the Block Assembly Diagram:

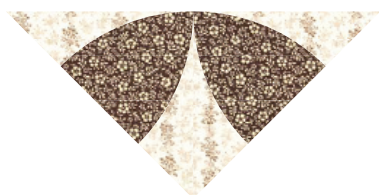
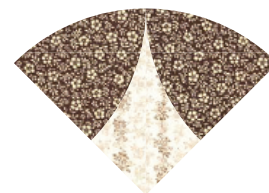
Two Fabric C/Template 4 pieces

One Fabric D/Template 3 piece

One Fabric D/Template 1 piece

One Fabric D/Template 2 piece

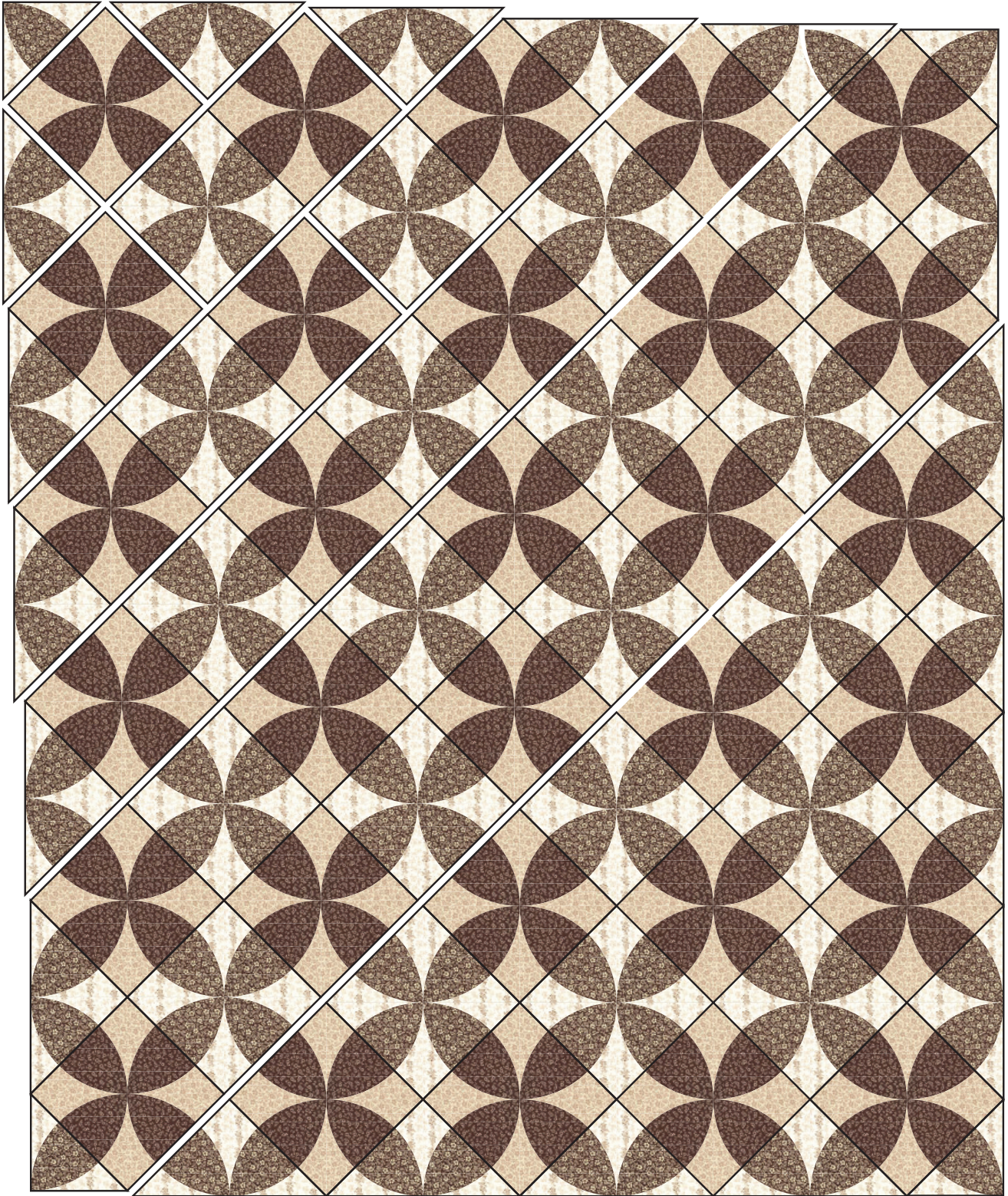
**Step 9:** Pin and sew a Template 4 piece to each side of the Template 3 piece. Clip the seams, taking care not to cut the seam allowance and press the seams in one direction.



**Step 10:** Pin and sew the Template 1 and Template 2 pieces to each remaining side of the Template 4 pieces. Clip the seams, taking care not to cut the seam allowance and press the seams in one direction.

Repeat Steps 9 and 10 to make eighteen Side Setting Blocks.



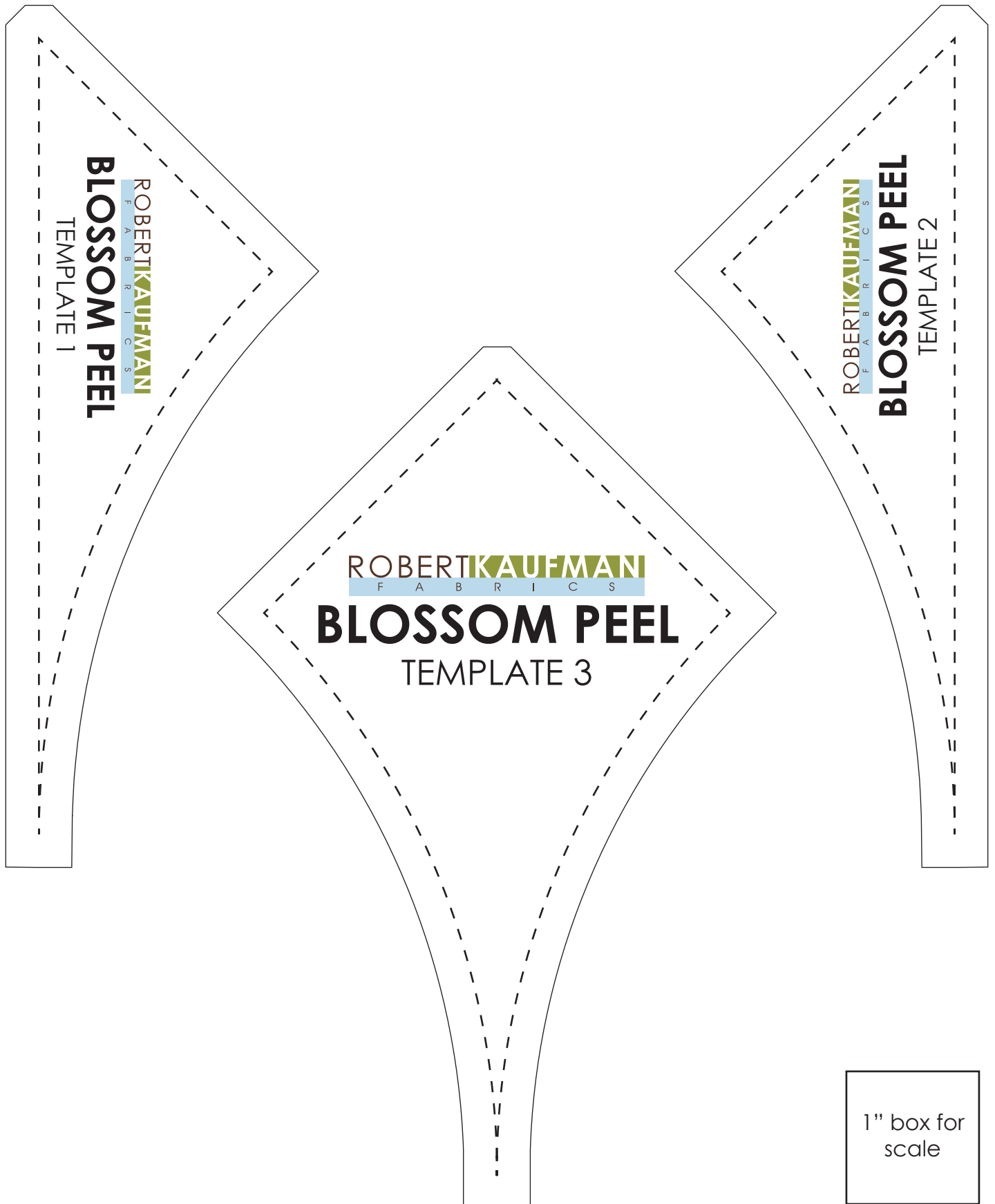


**Step 11:** Using the Quilt Assembly Diagram as a guide, sew the blocks and setting triangles into diagonal rows. Press the block seams to the left in the odd numbered rows and to the right in the even numbered rows. Sew the rows together, nesting the seams and pressing the row seams to one side. Sew the corner blocks to the corners. Press.

Your quilt top is complete! Baste, quilt, bind and enjoy!



Print at 100%.



1" box for  
scale

1" box for  
scale

