

BLOOMBURST PILLOWS

Designed by Elise Lea for RK
www.robertkaufman.com

Featuring *Wishwell*[®]

Bloomburst
Vanessa Lillrose & Linda Fitch



Finished projects measure: 22" x 22"

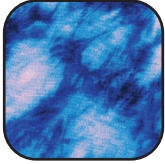

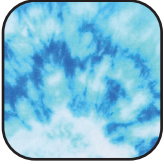
Difficulty Rating: **Beginner**

ROBERTKAUFMAN
F A B R I C S

For questions about this pattern, please email Patterns@RobertKaufman.com.

Fabric and Supplies Needed

Fabric amounts based on yardage that is 42" wide.

Color	Fabric	Name/SKU	Yardage	Color	Fabric	Name/SKU	Yardage
	A	WELD-21295-106 BLOSSOM	1-1/8 yards (one panel)		B	WELD-21299-72 COBALT	1/2 yard
					Backing	WELDY-21302-370 POOL	3/4 yard
				<p>You will also need: two 20" zippers two 22" pillow forms</p>			

Copyright 2022, Robert Kaufman
For individual use only - Not for resale

Notes Before You Begin

- Read through all of the instructions before beginning.
- All of the seam allowances are 1/4" unless otherwise noted.
- Press seam allowances open unless otherwise noted.
- Width of fabric (WOF) is equal to at least 42" wide.
- Right sides together has been abbreviated to RST.
- Remember to measure twice and cut once!

Cutting Instructions

From Fabric A, cut:

one 17-1/2" x WOF strip with the motifs on the panel centered on the strips. Subcut:
two 17-1/2" squares with the motifs fussy-cut in the center of each square.

From Fabric B, cut:

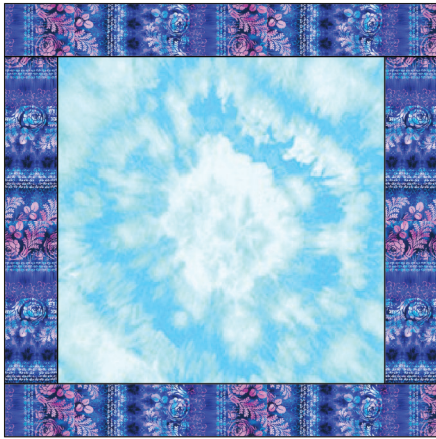
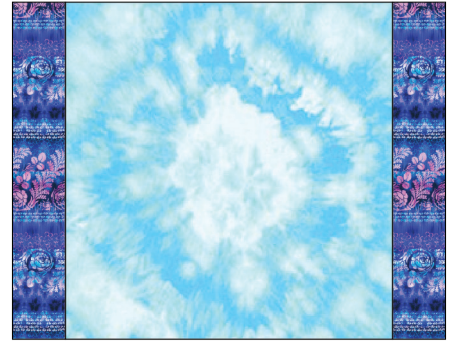
four 3" x WOF strips. Subcut:
four 3" x 17-1/2" rectangles.
four 3" x 22-1/2" rectangles.

From the Backing Fabric, cut:

one 22-1/2" x WOF strip. Subcut:
two 22-1/2" squares.

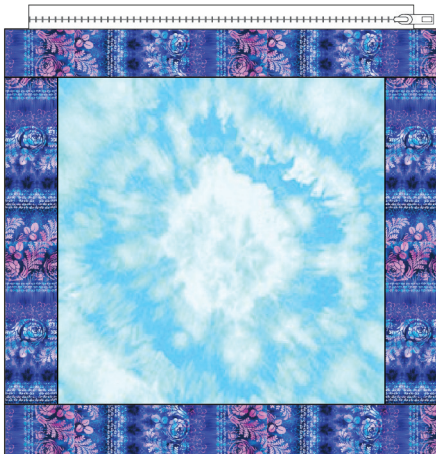
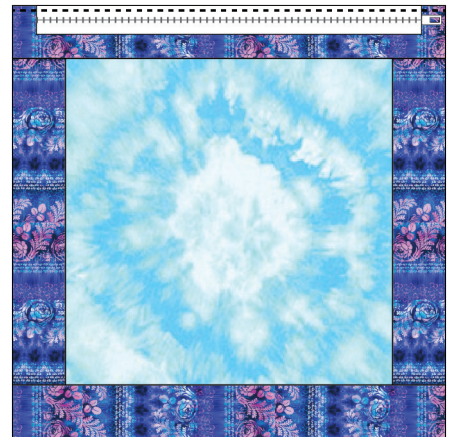
Assemble the Pillow

Step 1: Sew a 3" x 17-1/2" Fabric B rectangle to opposite sides of a 17-1/2" Fabric A square. Press.



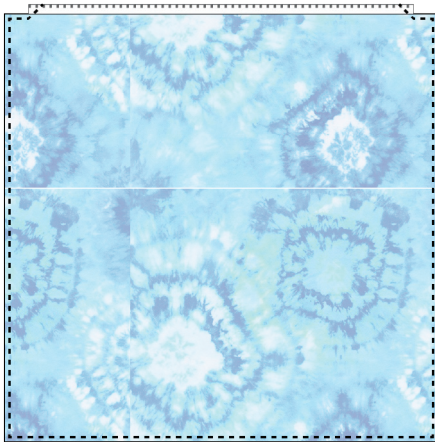
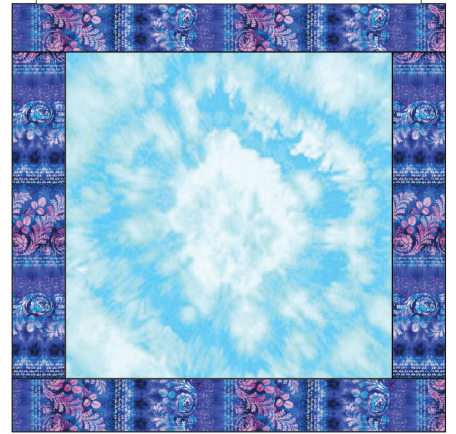
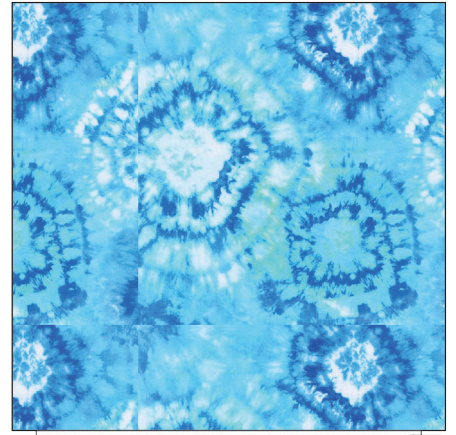
Step 2: Sew a 3" x 22-1/2" Fabric B rectangle to the top and bottom. Press.

Step 3: Center a zipper RST on one edge of a pillow front. Pin or clip in place, then sew along the edge using a zipper foot.



Step 2: Open and press the fabric away from the zipper.

Step 3: Repeat to add a backing square to the opposite side of the zipper.



Step 4: Open the zipper halfway, then align the edges of the pillow front and backing square, RST, and pin or clip them together.

Step 5: Sew around the perimeter, overlapping the ends of the zipper so the zipper disappears into the seam. Be sure to backstitch at each end of the seam and sew carefully across the zipper.

Step 6: Turn the pillow cover right sides out through the open zipper.

Step 7: Insert the pillow form into the pillow cover and zip it closed. Repeat to make a second pillow cover and enjoy!

