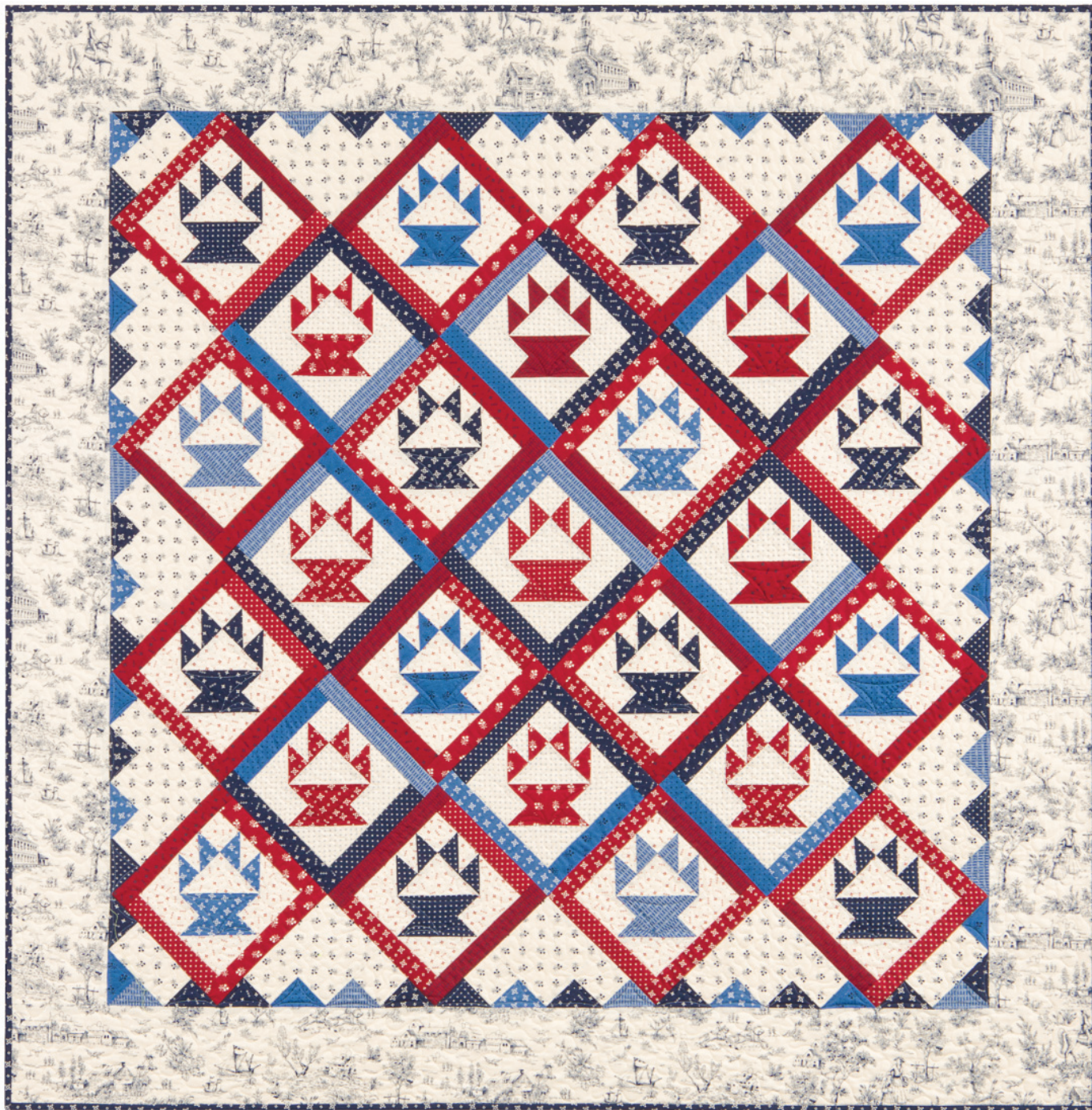


BETSY'S BASKETS

Designed by Darlene Zimmerman
www.feedsacklady.com

Featuring **Betsy's Basket**
Darlene Zimmerman



Finished quilt measures: 55" x 55"

Pattern Level: Confident Beginner











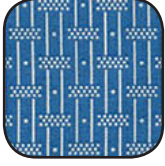





*"I have basic block construction down
and would like to learn a new trick!"*

ROBERT KAUFMAN
F A B R I C S

For questions about this pattern, please email Patterns@RobertKaufman.com.

Fabric and Supplies Needed

Fabric amounts based on yardage that is 44" wide.

| Color | Fabric | Name/SKU | Yardage | Color | Fabric | Name/SKU | Yardage |
|---|--------|------------------------|-------------|---|--------|--|-------------|
|  | A | ADZ-16024-67 DENIM | 2/3 yard |  | I | ADZ-16026-62 INDIGO | fat quarter |
|  | B | ADZ-16025-302 POPPY | 2/3 yard |  | J | ADZ-16028-9 NAVY *includes binding | 1 yard |
|  | C | ADZ-16026-9 NAVY | 1/2 yard |  | K | ADZ-16024-3 RED | fat quarter |
|  | D | ADZ-16028-62 INDIGO | fat quarter |  | L | ADZ-16026-3 RED | fat quarter |
|  | E | ADZ-16024-62 INDIGO | fat quarter |  | M | ADZ-16027-3 RED | fat quarter |
|  | F | ADZ-16027-62 INDIGO | fat quarter |  | N | ADZ-16028-3 RED | fat quarter |
|  | G | ADZ-16025-9 NAVY | fat quarter |  | O | ADZ-16025-3 RED | 1/3 yard |
|  | H | ADZ-16024-9 NAVY | fat quarter |  | P | ADZ-16022-9 NAVY | 1 yard |

Copyright 2016, Robert Kaufman
For individual use only - Not for resale

You will also need:
3-5/8 yards for backing
Easy Angle (EZ Quilting #8823759A)
Companion Angle (EZ Quilting #882670139A)

Notes Before You Begin

- Read through all of the instructions before beginning.
- All of the seam allowances are 1/4" unless otherwise noted.
- Press seam allowances open unless otherwise noted.
- Width of fabric (WOF) is equal to at least 44" wide.
- Right sides together has been abbreviated to RST.
- Remember to measure twice and cut once!

Cutting Instructions

From Fabric A, cut:

two 3-1/2" x WOF strips. Subcut:
 eighteen 3-1/2" Easy Angle triangles
five 2" x WOF strips. Subcut:
 thirty-six 2" Easy Angle triangles
 eighteen 2" x 3-1/2" rectangles
 nine 2" squares

From Fabric B, cut:

two 3-1/2" x WOF strips. Subcut:
 thirty-two 3-1/2" Easy Angle triangles
seven 2" x WOF strips. Subcut:
 eighty 2" Easy Angle triangles
 thirty-two 2" x 3-1/2" rectangles
 sixteen 2" squares

From Fabric C, cut:

two 4-1/2" x WOF strips. Subcut:
 twelve 4-1/2" squares
two 2-1/2" x WOF strips. Subcut:
 thirty-two 2-1/2" squares

From each of Fabrics D-I, cut:

one 3-1/2" x 21" strips. Subcut:
 two 3-1/2" Easy Angle triangles
one 2" x 21" strip. Subcut:
 twelve 2" Easy Angle triangles
two 1-1/2" x 21" strips. Subcut:
 two 1-1/2" x 8-1/2" rectangles
 two 1-1/2" x 6-1/2" rectangles
two 2" x 21" strips. Subcut:
 ten Companion Angle triangles

From Fabric J, cut:

one 3-1/2" x WOF strip. Subcut:
four 3-1/2" Easy Angle triangles
two 2" x WOF strips. Subcut:
twenty-four 2" Easy Angle triangles
ten Companion Angle triangles
three 1-1/2" x WOF strips. Subcut:
six 1-1/2" x 8-1/2" rectangles
six 1-1/2" x 6-1/2" rectangles
six 2-1/2" x WOF strips for binding

From each of Fabrics K-N, cut:

one 3-1/2" x 21" strip. Subcut:
two 3-1/2" Easy Angle triangles
one 2" x 21" strip. Subcut:
twelve 2" Easy Angle triangles
six 1-1/2" x 21" strips. Subcut:
six 1-1/2" x 8-1/2" rectangles
six 1-1/2" x 6-1/2" rectangles

From Fabric O, cut:

one 3-1/2" x WOF strip. Subcut:
one 3-1/2" Easy Angle triangles
one 2" x WOF strip. Subcut:
six 2" Easy Angle triangles
two 1-1/2" x WOF strips. Subcut:
eight 1-1/2" x 8-1/2" rectangles
eight 1-1/2" x 6-1/2" rectangles

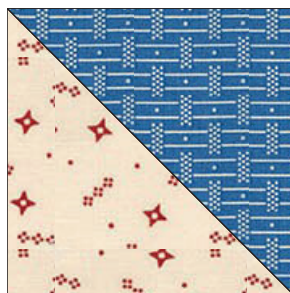
From Fabric P, cut:

three 5-1/2" x **length** of fabric strips for the vertical borders
From the remaining width of fabric, cut:
five 5-1/2" x remaining WOF strips for the *Horizontal* borders

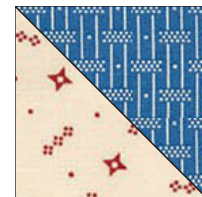
Assembling the Blocks

NOTE: You will make sixteen blue baskets with red sashing and nine red baskets with blue sashing. The blue background is used in the red basket blocks and the red background is used in the blue basket blocks.

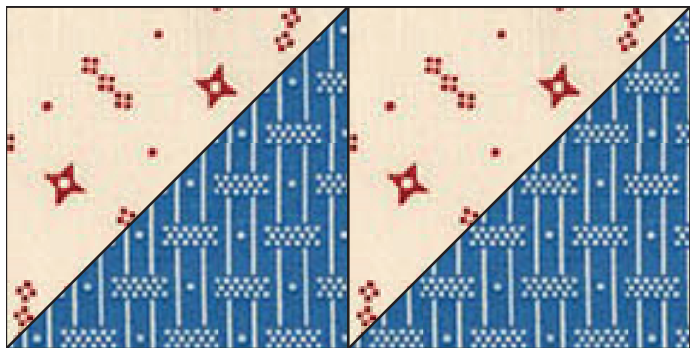
Step 1 Match a large red background triangle with a blue large triangle (choose from Fabrics C-I). Sew, then press toward the blue triangle. Repeat for all sixteen large blue triangles.



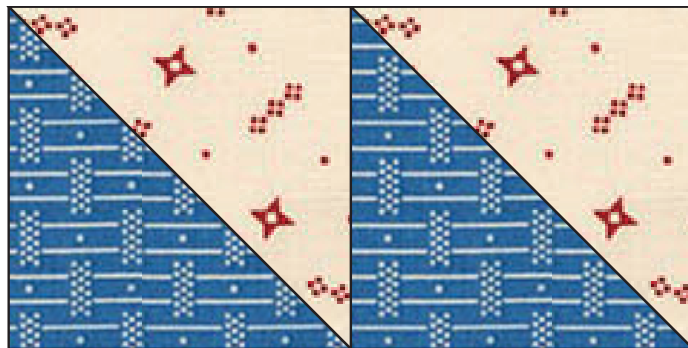
Step 2 Match eight small triangles from six blue prints with eight small red background triangles. Sew, then press toward the blue triangles. One blue prints will use sixteen blue triangles.



Step 3 Sew matching small triangle squares together in A and B pairs as shown. Press.

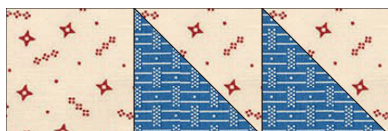
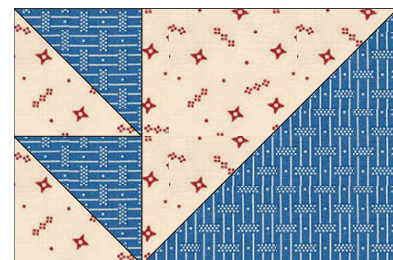


A

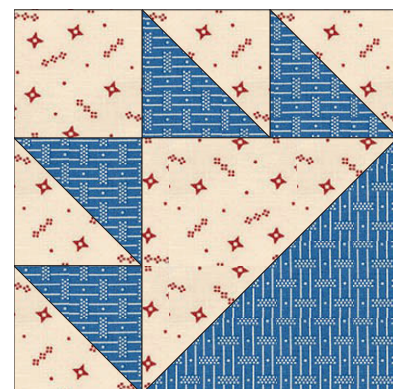


B

Step 4 Set the A sets of triangle-squares from Step 3 to the left side of the matching large triangle-squares. Press. Repeat to make sixteen blue units.

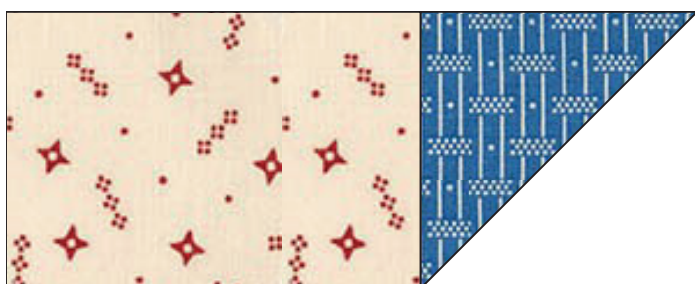


Step 5 Sew a red background square to the left side of the B triangle-squares from Step 3. Press toward the square. Repeat to make sixteen units.

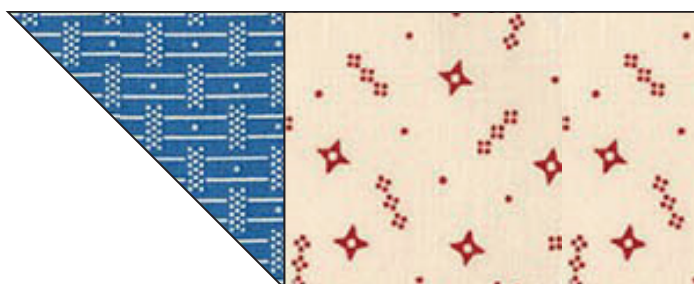


Step 6 Sew the Step 5 units to the top of the Step 4 units. Press.

Step 7 Sew a matching pair of small blue triangles to the 2" x 3-1/2" red background rectangles as shown. Make two A and B pairs for six blue prints, and four A and B pairs for one blue print. Press.

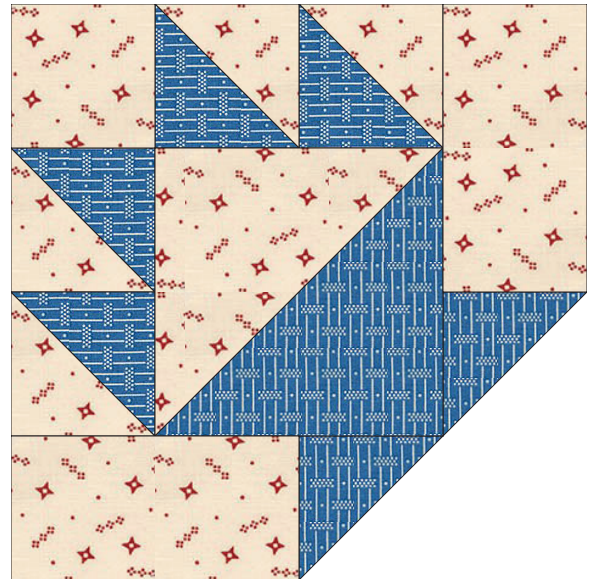


A

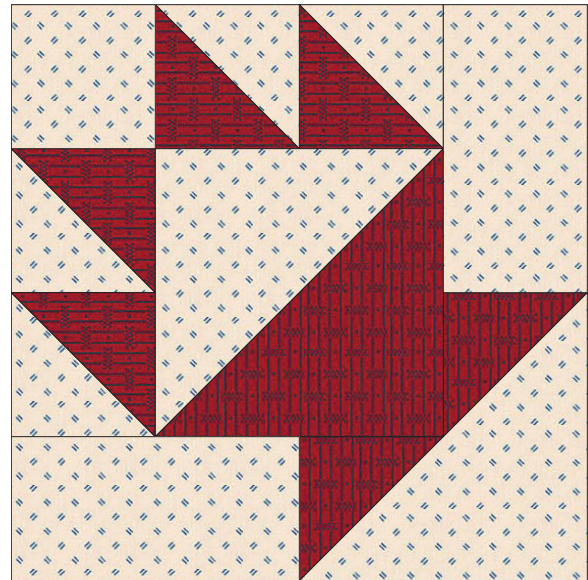
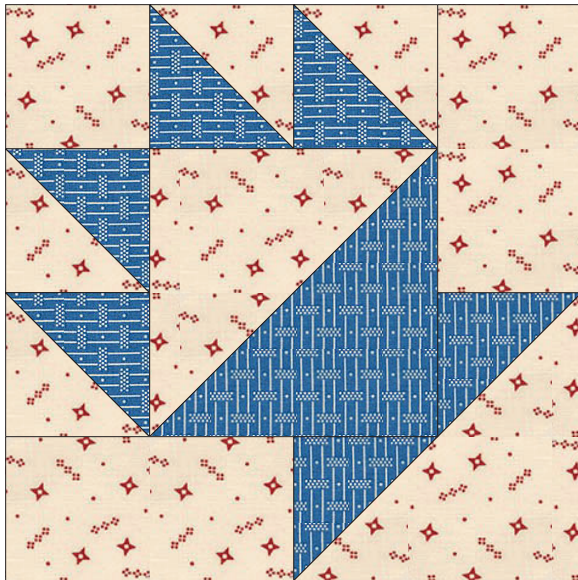


B

Step 8 Sew the Step 7 units to adjacent sides of the Step 6 units. Trim excess points and press.



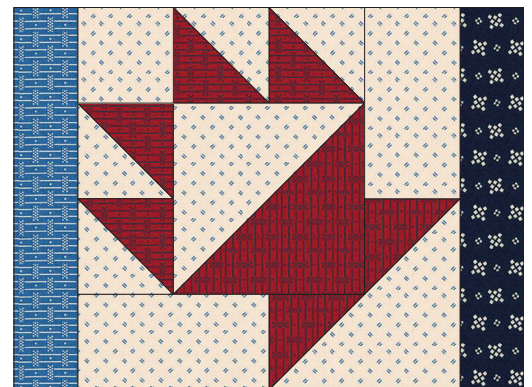
Step 9 Sew a red background triangle to the bottom of the basket blocks. Press. At this point the blocks should measure 6-1/2" square. Repeat this process to make nine red basket blocks with blue background.



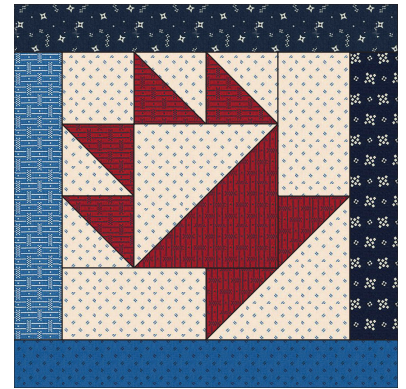
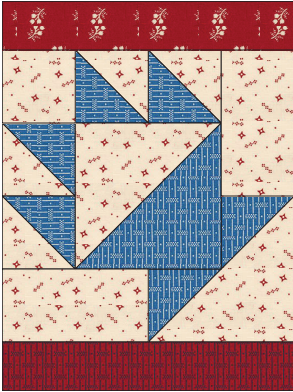
Note: If your blocks measure less than 6-1/2" square, trim the sashing strips in the next two steps to fit your blocks.

Sashing the Blocks

Step 10 Using two different **blue** 1-1/2" x 6-1/2" sashing strips, sew them to opposite sides of the **red** basket blocks. Press toward the sashing. Repeat for each of the red baskets.

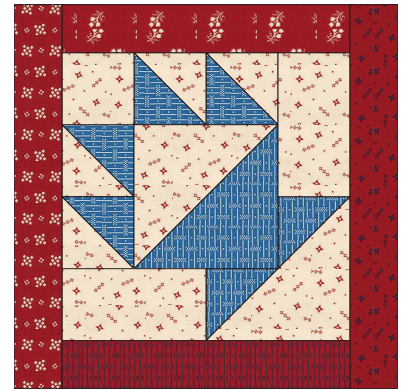


Step 11 Using two different **blue** 1-1/2" x 8-1/2" sashing strips, sew to the remaining sides of the **red** basket blocks. Press toward the sashing. Repeat for all the red basket blocks.



Step 12 Using two different **red** 1-1/2" x 6-1/2" sashing strips, sew to opposite sides of the **blue** basket blocks. Press toward the sashing.

Step 13 Using two different **red** 1-1/2" x 8-1/2" sashing strips, sew to the remaining sides of the **blue** basket blocks. Press toward the sashing.



NOTE: The sashings on the blue basket blocks are sewn in the reverse order on the red basket blocks.

Assembling the Border Triangles

Step 14 Sew a blue Companion Angle triangle to the right side of a 2-1/2" Fabric C background square. Press toward the triangles. Make thirty-two units.



Step 15 Sew a different blue triangle to the left side of the Step 14 units. Press toward the triangles. (You will have some triangles left over.)

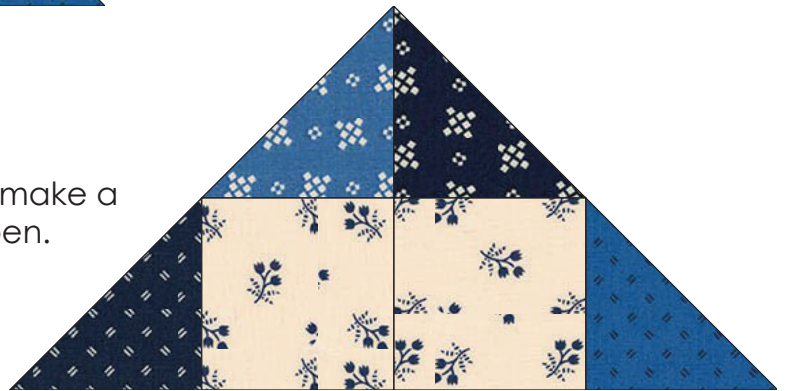
Step 16 Sew a unit from Step 15 to the right side of the 4-1/2" Fabric C background square. Press. Repeat to make a total of twelve units.



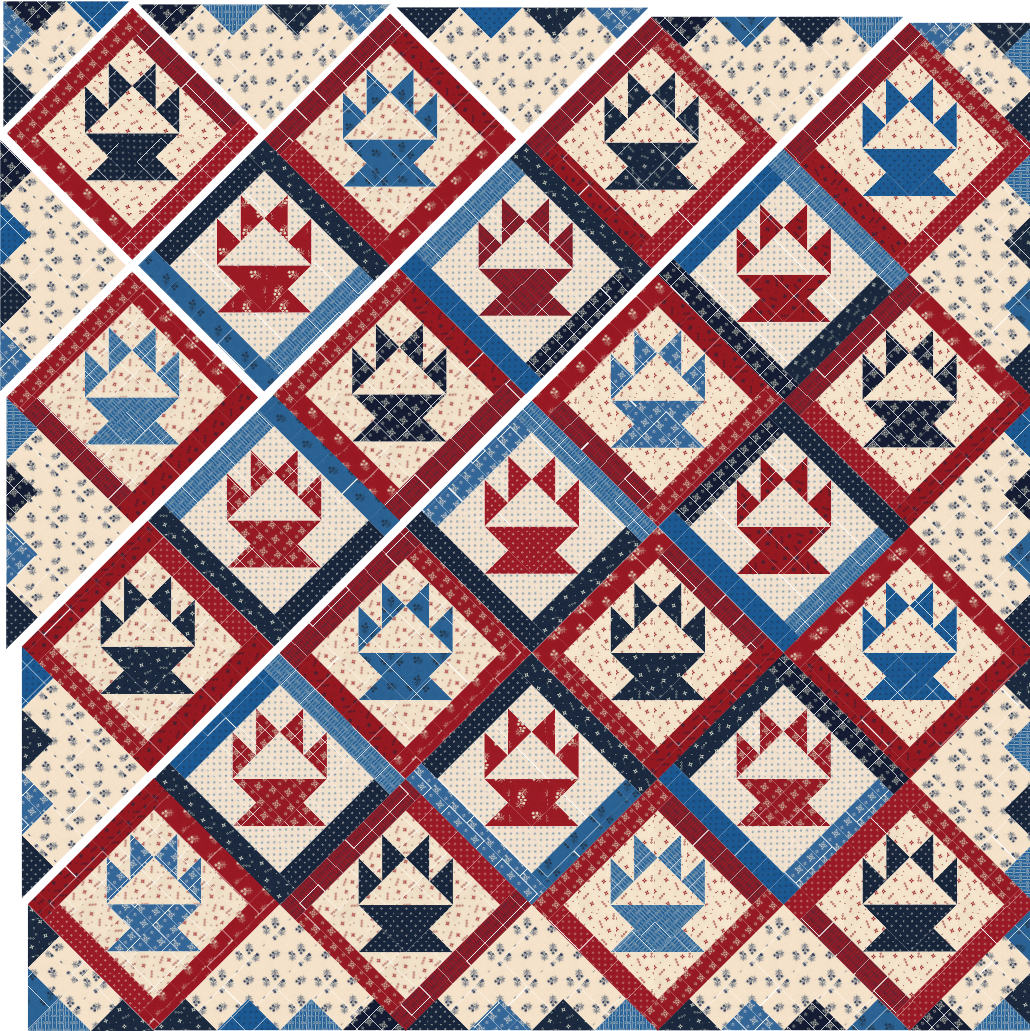


Step 17 Sew a Step 15 unit to the left side of the Step 16 units. Press. Repeat to make a total of twelve units.

Step 18 Using two of the Step 15 units, sew together to make a corner unit. Repeat to make a total of four corner units. Press the seam open.



Assembling the Quilt Top



Step 19 Arrange the setting triangles, and the red and blue basket blocks as shown in diagonal rows as shown in the Quilt Assembly Diagram. Sew the blocks together in rows. Press the seams toward the blue sashing or the setting triangles.

Step 20 Sew the rows together, matching and pinning seams. Press the row seams all one direction.

Step 21 Trim the edges straight, *leaving at least 1/4" seam allowance from the corner of the blocks.*

Adding the Borders

Step 22 Sew the *vertical* borders together, end-to-end. Then trim to the length of the quilt. Sew to the sides of the quilt. Press toward the borders.

Step 23 Piece together the three *horizontal* toile borders with straight seams pressed open. Measure the width of the quilt, then trim two borders to that measurement. Sew to the top and bottom of the quilt. Press toward the borders.

Your quilt top is now complete! Baste, quilt, bind and enjoy!