

BERRY PATCH

Designed by Elizabeth Hartman
www.elizabethhartman.com

Featuring

ELIZABETH HARTMAN
BERRY SEASON



Finished quilt measures: 42" x 35"





Difficulty Rating: **Intermediate**

ROBERT KAUFMAN
F A B R I C S

For questions about this pattern, please email Patterns@RobertKaufman.com.

Fabric and Supplies Needed

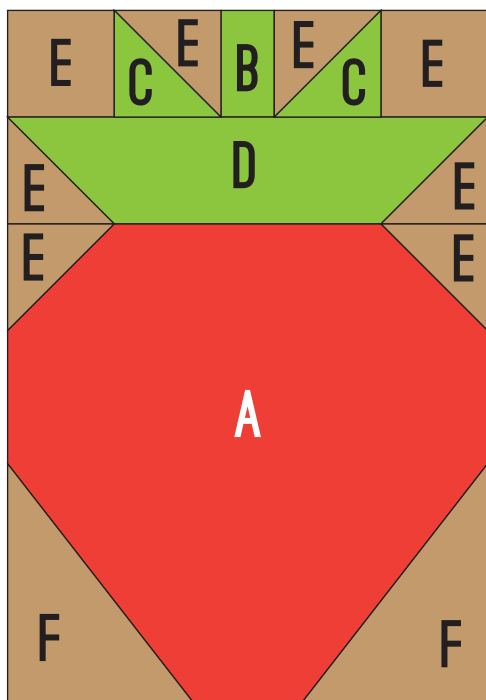
Fabric amounts based on yardage that is 42" wide.

Color	Fabric Name/SKU	Yardage	Color	Fabric	Name/SKU	Yardage
	CHS-772-42 BERRY SEASON	one charm pack or 25 print fabric squares, 5" x 5" each		A	E114-857 ROASTED PECAN	1-5/8 yard
	CHS-787-42 BERRY SEASON KONA SOLID COORDINATES	one charm pack or 25 solid fabric squares, 5" x 5" each		Binding	AZH-18092-379 LINGERIE	3/8 yard
Copyright 2019, Robert Kaufman For individual use only - Not for resale			You will also need: 1-1/2 yards for backing			

Notes Before You Begin

- Yardages are for fabric at least 42" wide
- Unless otherwise noted, all seams are sewn with a 1/4" seam allowance and pressed open.
- WOF = width of fabric
- My directions refer to placing "right sides together." If you are using Kona Solids and Essex linen blend like I did, you can ignore this piece of direction, as Kona and Essex are the same on both sides.
- You will also need the marking tool of your choice for diagonal seams.
- This pattern may not be used to make items for sale.

Berry Block Diagram



Block Diagram

The chart includes a list of the pieces needed to make each block. The diagram shows where in the block each piece will go. Each Berry Block will measure 4-1/2" wide x 6-1/2" tall finished (5" x 7" with seam allowance). Please note that the two pieces F shown in the diagram are made by cutting the one piece F referenced in the chart in half diagonally, as described in the pattern directions.

Piece	Quantity	Size
BERRY (print charm square)		
A	1	5" x 5"
STEM (solid charm square)		
B	1	1" x 1-1/2"
C	2	1-1/2" x 1-1/2"
D	1	1-1/2" x 5"
BACKGROUND FABRIC		
E	8	1-1/2" x 1-1/2"
F	1	4" x 4"

Cutting Directions

From the print charm pack, cut:

twenty-eight of Piece A

From the solid charm pack, cut:

twenty-eight sets of Pieces B, C and D

From Fabric A, cut:

two 5" x WOF strips. Subcut:

seven 2-1/2" x 5" rectangles for the Spacer pieces

twenty-one 1-1/2" x 5" rectangles for the Horizontal Sashing pieces

three 4" x WOF strips. Subcut:

twenty-eight 4" squares for pieces F

two 2-3/4" x WOF strips. Subcut:

two 2-3/4" x 35-1/2" strips for the Vertical Borders

two 2-1/2" x WOF strips. Subcut:

two 2-1/2" x 38" strips for the Horizontal Borders

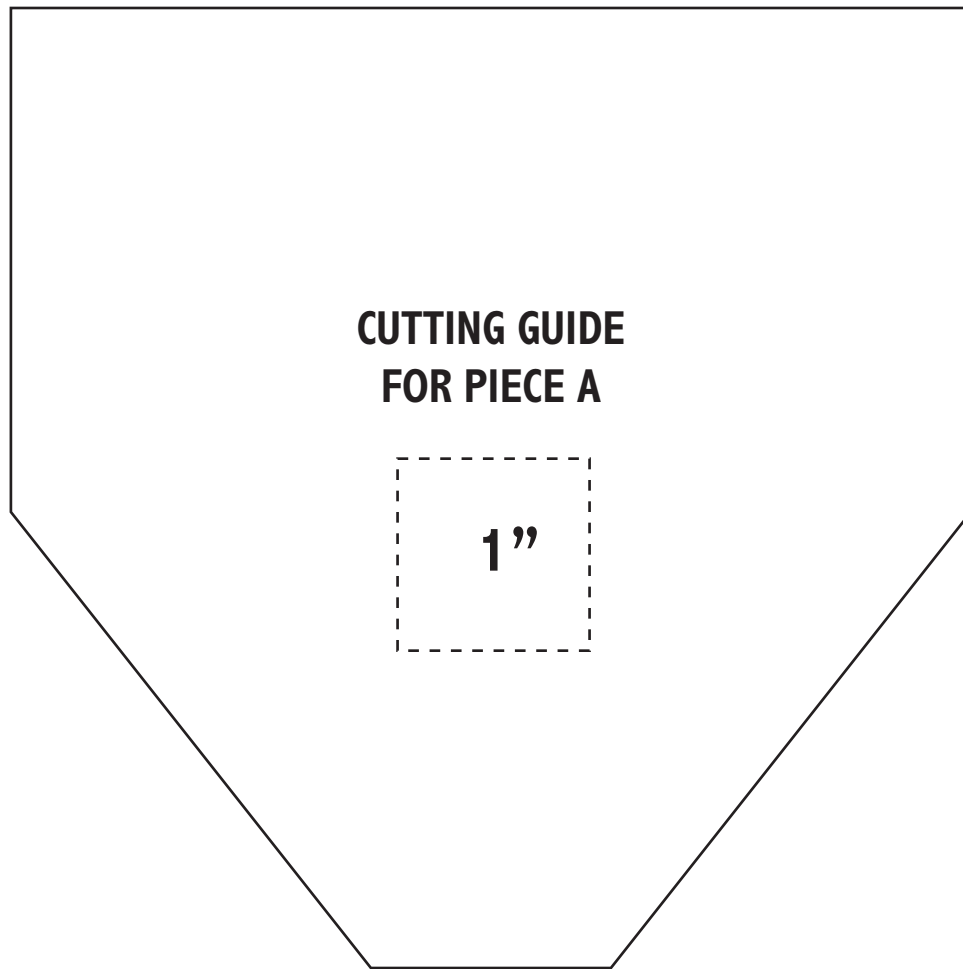
fourteen 1-1/2" x WOF strips. Subcut:

six 1-1/2" x 31-1/2" strips for the Vertical Sashing pieces

two hundred twenty-four 1-1/2" squares for pieces E

From the Binding Fabric, cut:

five 2-1/2" x WOF strips



Making the Berry Blocks

Follow these directions to make a total of twenty-eight blocks.

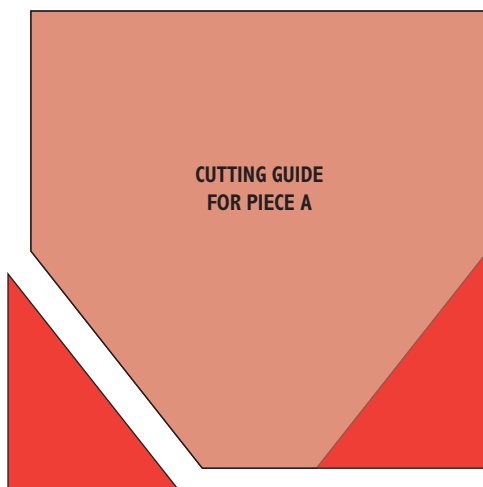


Fig. 1

Step 1: Print and cut out the Cutting Guide for Piece A, making sure to print "at 100%" or with "no scaling." Place your ruler over the registration mark on the guide to confirm that it printed at the correct size. Place the cutting guide on top of Piece A, as shown in **Fig. 1**, and cut piece A to match the cutting guide.

Step 2: Cut piece F square in half diagonally, as shown in **Fig. 2** to make two triangles which will now each be called piece F.

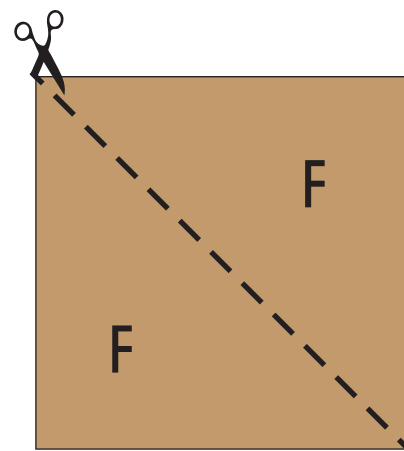


Fig. 2

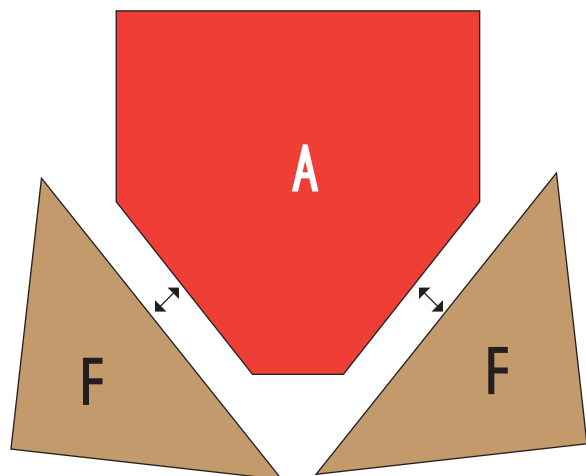


Fig. 3

Step 3: Sew pieces F to the bottom of piece A, centering the long sides of pieces F along the angled sides of piece A as shown in **Fig. 3**.

Step 4: Measuring from the top of piece A, trim the FAF unit to 5" x 5", as shown in **Fig. 4**.

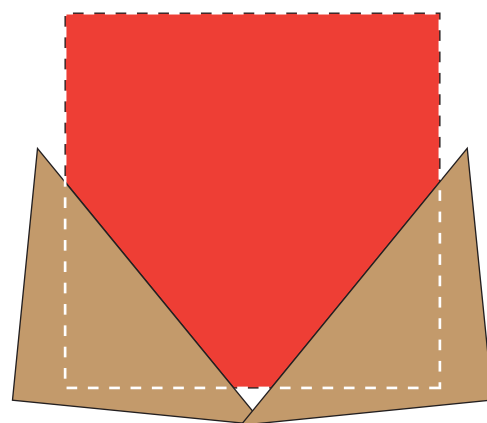


Fig. 4



Fig. 5

Step 5: Keeping right sides together, align pieces E with the outer edges of piece D, as shown in **Fig. 5**. Use the marking tool of your choice to mark a diagonal line from corner to corner of each piece E, as shown in **Fig. 5**. Sew along the marked lines (right on top of the lines) to make diagonal seams. Trim away excess fabric, leaving 1/4" seam allowance and press the seams open to make an EDE unit that looks like **Fig. 6**.

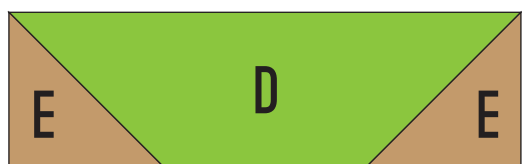


Fig. 6

Step 6: With right sides together, place one piece E on top of one piece C, as shown in **Fig. 7**. (Because the two pieces are the same size, piece C will not be visible.) Use the same process from Step 5 to sew the pieces together using a diagonal seam. Repeat to make a total of two mirror-image EC units, as shown in **Fig. 8**.



Fig. 7

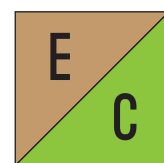
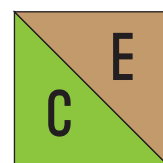


Fig. 8

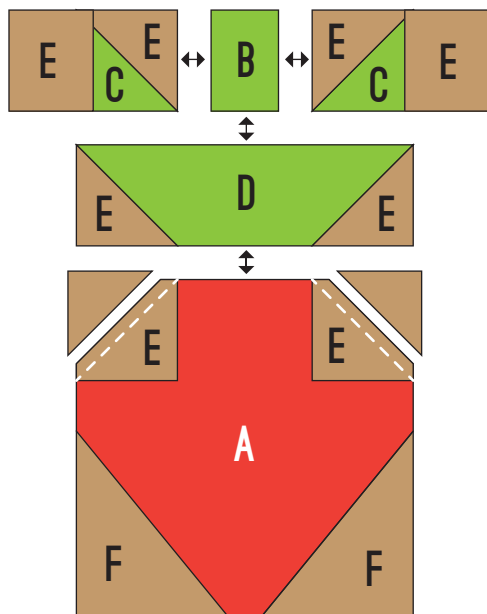
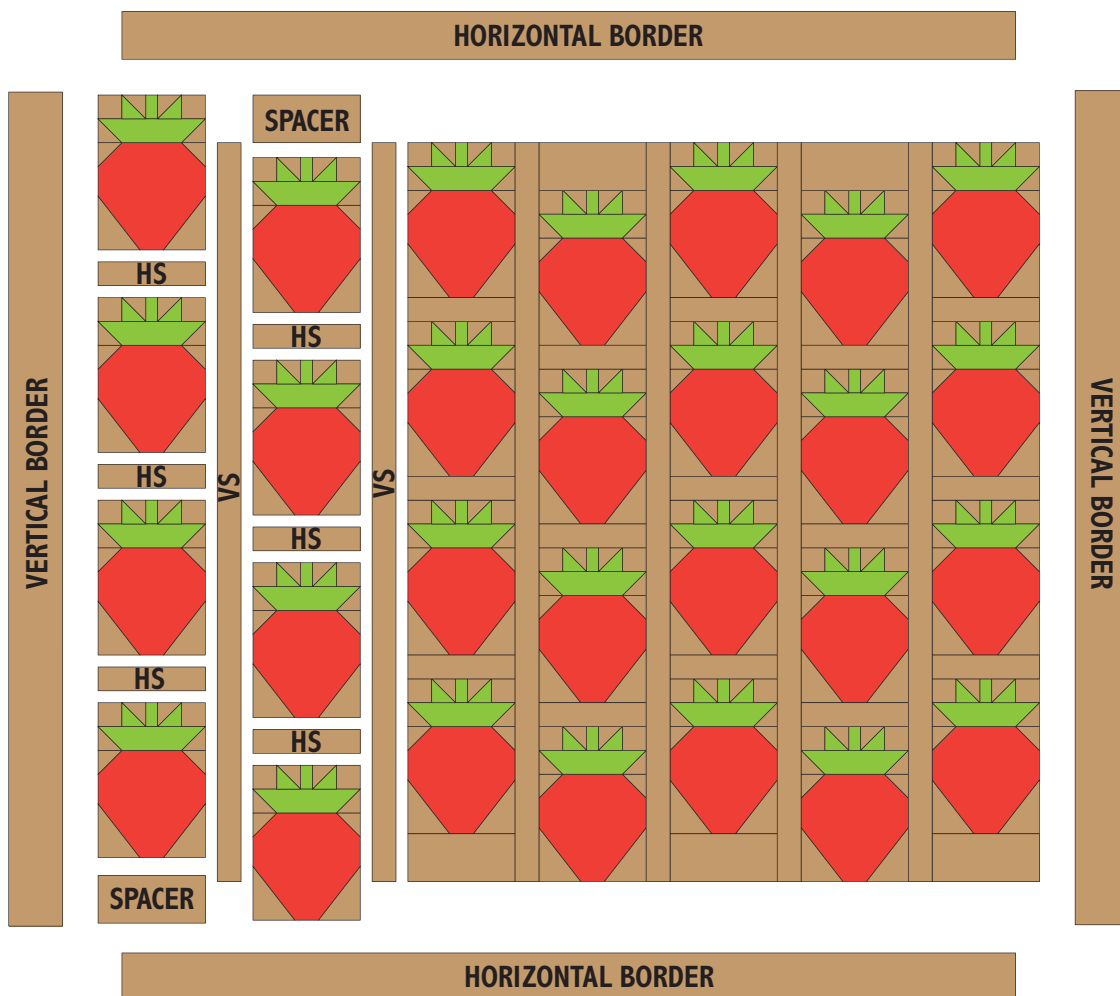


Fig. 9

Step 7: Use the process from Step 5 to sew 2 pieces E to the FAF unit, using diagonal seams, as shown in **Fig. 9**.

Step 8: Refer to **Fig. 9** to sew one piece E to each of the EC units. Sew one EEC unit to each side of Piece B. Sew the EECBEEC unit to the top of the EDE unit, and sew the EFAFE unit to the bottom to finish the 5" wide x 7" tall block.

Finishing the Quilt



Quilt Top Assembly

Step 9: Refer to the Quilt Top Assembly Diagram to arrange the twenty-eight blocks in seven columns, with four blocks in each column. Sew the blocks in each column together, sewing a Horizontal Sashing (HS) piece between each block, beginning and ending with a block.

Step 10: Continue referring to the Quilt Top Assembly Diagram to sew one Spacer piece to the bottoms of columns 1, 3, 5, and 7, and to the tops of columns 2, 4, and 6. Sew the columns together, sewing a Vertical Sashing (VS) piece between each column, beginning and ending with a column.

Step 11: Sew the Horizontal Border strips to the top and bottom and the Vertical Border strips to the left and right sides to finish the 35-1/2" tall x 42-1/2" wide quilt top.

Step 12: Trim backing fabric to 41" x 48". Sandwich and quilt as desired. Bind as desired.