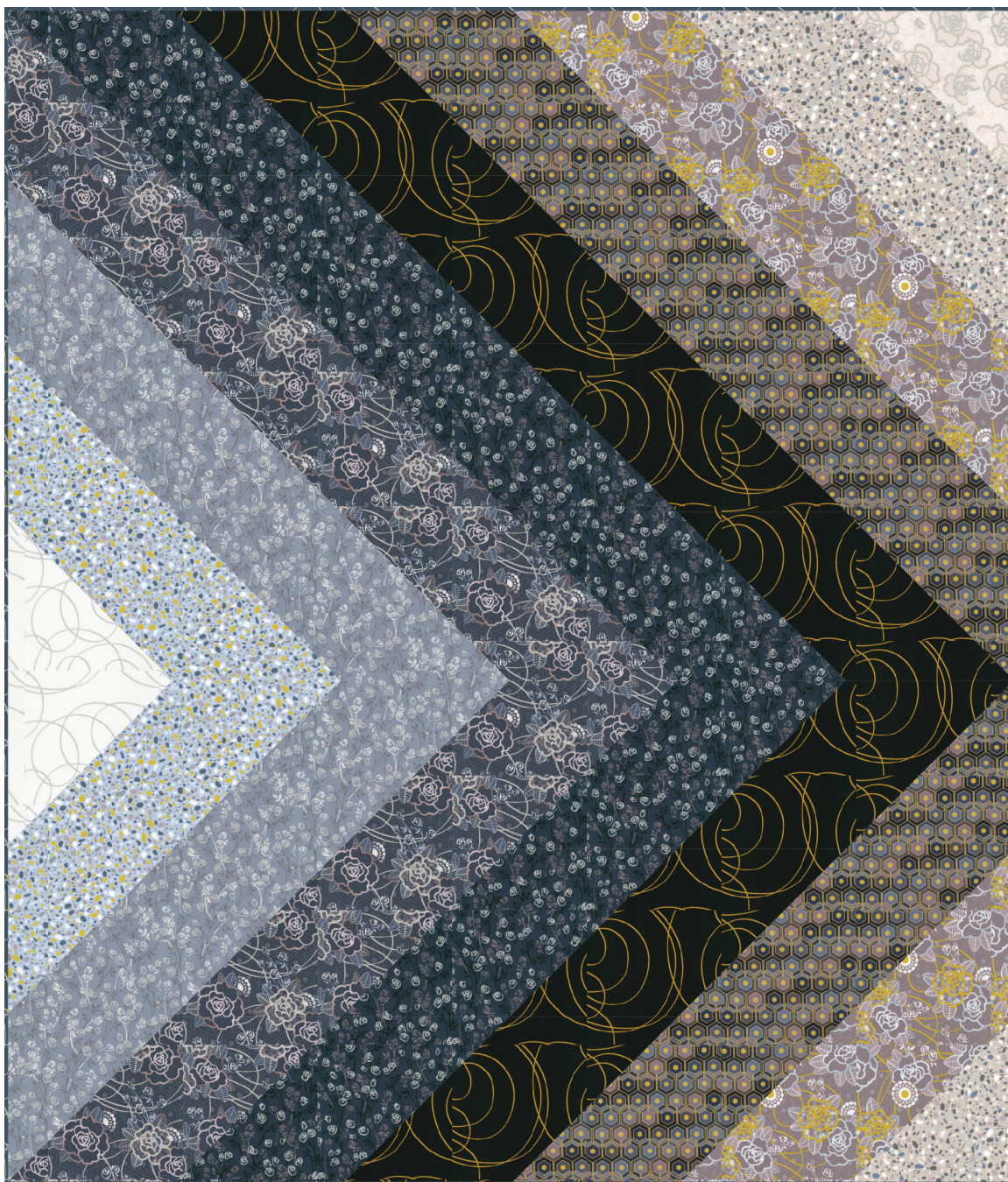


ANGLED

Designed by Elise Lea for RK
www.robertkaufman.com

Featuring *Wishwell*

Neutral Dawn
Silverstone
Vanessa Lillrose & Linda Fitch



Finished quilt measures: 60" x 70"



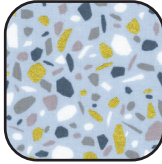


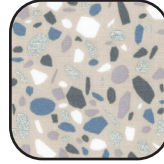

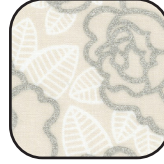



Difficulty Rating: **Beginner**

ROBERTKAUFMAN
F A B R I C S

For questions about this pattern, please email Patterns@RobertKaufman.com.

Fabric and Supplies Needed

Fabric amounts based on yardage that is 42" wide.

Color	Fabric	Name/SKU	Yardage	Color	Fabric	Name/SKU	Yardage
	A	WELM-21436-187 PLATINUM	1/3 yard		G	WELM-21432-189 EBONY	1 yard
	B	WELM-21435-186 SILVER	1/3 yard		H	WELM-21430-160 TAUPE	1 yard
	C	WELM-21434-186 SILVER	2/3 yard		I	WELM-21435-155 STONE	1/3 yard
	D	WELM-21430-185 STEEL	1 yard		J	WELM-21431-90 PEARL	1/3 yard
	E	WELM-21434-184 CHARCOAL	1 yard		Binding*	WELM-21436-185 STEEL	5/8 yard
	F	WELM-21436-181 ONYX	1 yard	<div>You will also need: 3-5/6 yards for backing</div>			
Copyright 2022, Robert Kaufman For individual use only - Not for resale							

Notes Before You Begin

- Read through all of the instructions before beginning.
- All of the seam allowances are 1/4" unless otherwise noted.
- Press seam allowances open unless otherwise noted.
- Width of fabric (WOF) is equal to at least 42" wide.
- Right sides together has been abbreviated to RST.
- Remember to measure twice and cut once!

Cutting Instructions

From Fabrics A and J, cut:

one 11" x WOF strip of each fabric. Subcut:
one 11" square of each fabric.

From Fabrics B and I, cut:

one 11" x WOF strip of each fabric. Subcut:
three 11" squares of each fabric.

From Fabric C, cut:

two 11" x WOF strips. Subcut:
five 11" squares.

From Fabrics D, G, and H, cut:

three 11" x WOF strips of each fabric. Subcut:
seven 11" squares of each fabric.

From Fabrics E and F, cut:

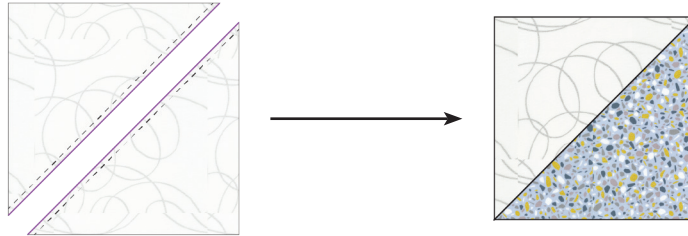
three 11" x WOF strips of each fabric. Subcut:
eight 11" squares of each fabric.

From the Binding Fabric, cut:

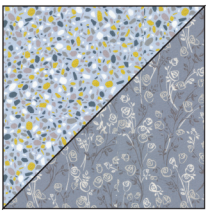
seven 2-1/2" x WOF strips.

Assemble the Half-Square Triangles (HSTs)

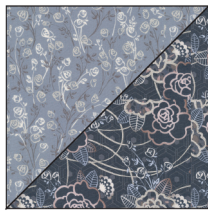
Step 1: Pair an 11" Fabric A square with an 11" Fabric B square, RST. Mark a diagonal line on the wrong side of one square. Sew 1/4" away from both sides of the marked line. Cut on the marked line creating two half-square triangles (HSTs). Press toward the darker fabric. Trim to 10-1/2" square. Make two A/B HSTs.



Step 2: Repeat step 1 to make:



four B/C HSTs



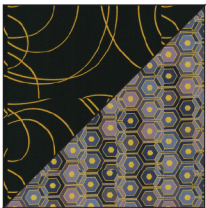
six C/D HSTs



eight D/E HSTs*



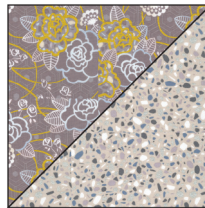
eight E/F HSTs*



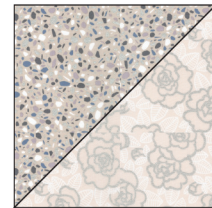
eight F/G HSTs*



six G/H HSTs*



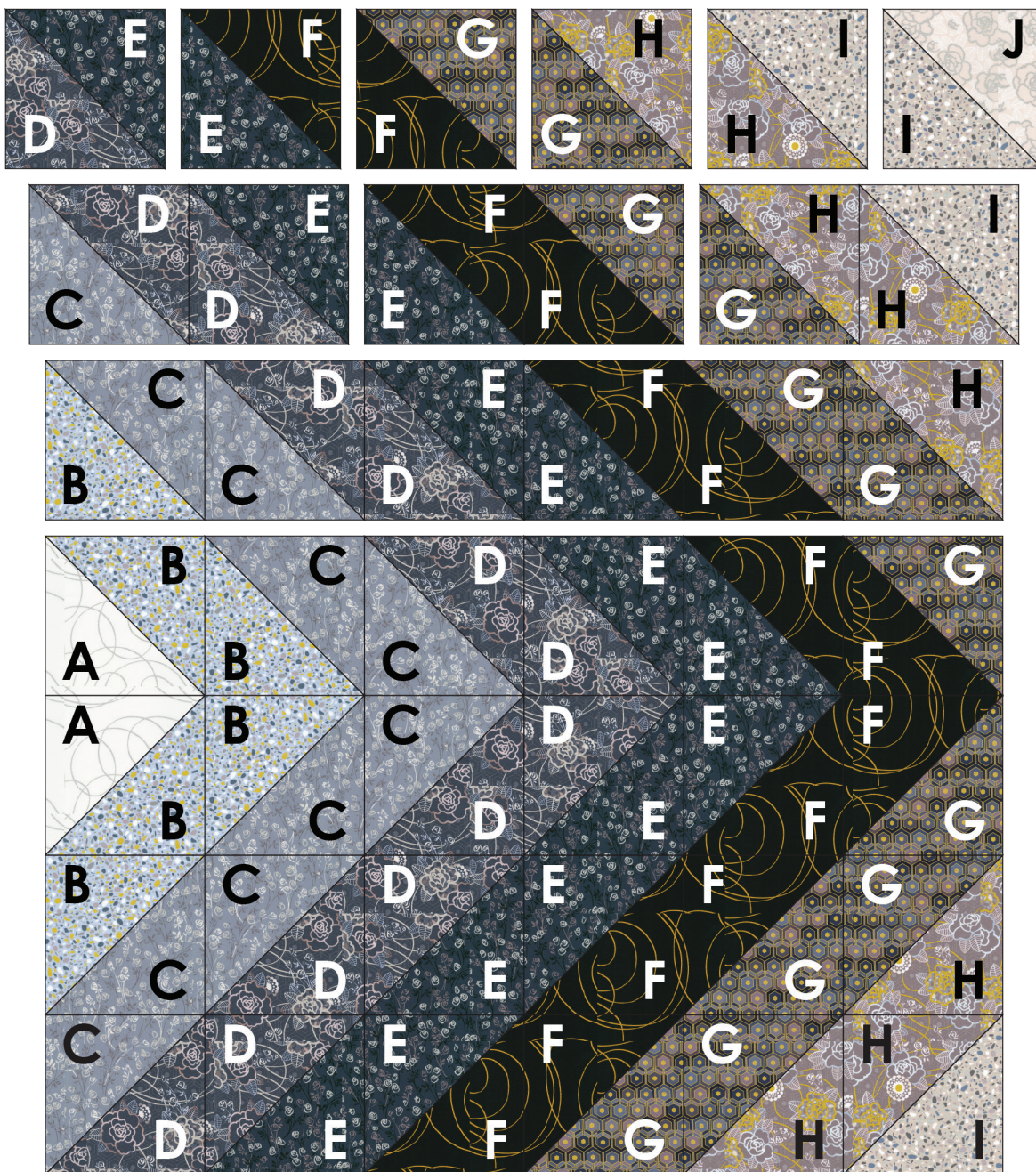
four H/I HSTs*



two I/J HSTs*

**Note: HSTs listed with an asterisk above will have one additional unit that can be used for another project.*

Assemble the Quilt



Step 3: Arrange the blocks into seven rows of six blocks. Note the fabric placement and block orientation in the Quilt Assembly Diagram.

Step 4: Sew the blocks together to form rows. Press the rows to the left in the odd-numbered rows and to the right in the even-numbered rows.

Step 5: Sew the rows together to form the quilt center. Press the row seams open.

Your quilt top is complete! Baste, quilt, bind, and enjoy!

This pattern may be used for personal purposes only and may not be reproduced in any form without the express permission from Robert Kaufman Fabrics. This pattern is not for resale. All patterns, unless otherwise attributed, are © Robert Kaufman Co., Inc. 2005-2022. All rights reserved.