

Adventures with Alice

designed by Darlene Zimmerman for Robert Kaufman Fabrics



featuring
Adventures with Alice
by Darlene Zimmerman



pillow measures 12" x 17", quilt measures 45" x 51-1/2"



ROBERTKAUFMAN

F A B R I C S

www.robertkaufman.com

Pattern will be available to download free from
www.robertkaufman.com beginning January 2012

Adventures With Alice quilt

finished quilt measures 45" x 51-1/2"

Fabric Requirements

ADZ-11456-200	panel	2/3yd (1 repeat)
ADZ-11460-121	background	1 yd.
ADZ-11459-121	borders	1-3/8 yd.
ADZ-11459-80	pinwheels	3/4 yd.
	Backing	2-3/4 yds.

Suggested Tool

Easy Angle (TM)

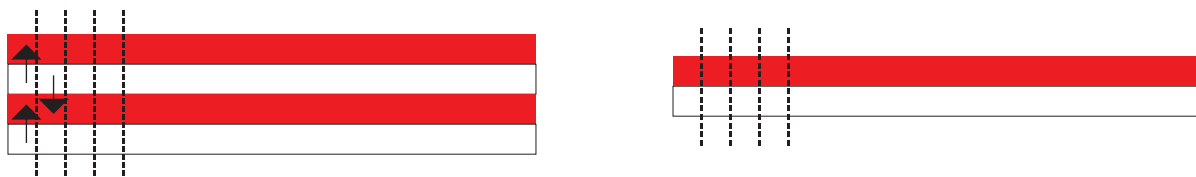
Cutting Directions

FROM	CUT	TO YIELD
ADZ-11460-121	(5) 1-1/2" x 42" strips	strip sets
	(6) 3-1/2" x 42" strips	104 Easy Angle triangles*
ADZ-11459-121	(5) 1-1/2" x 42" strips	strip sets
	(9) 2" x 42" strips	inner & outer border
	(9) 2-1/4" x 42" strips	binding
ADZ-11459-80	(6) 3-1/2" x 42" strips	104 Easy Angle triangles*

*If not using Easy Angle, cut (52) 3-7/8" squares; cut once on the diagonal. Layer both fabrics right sides together and cut. They will then be ready to sew.

Assembling the Quilt

Step 1: Sew the background and red print 1-1/2" wide strips together to make two different strip sets as shown. Press toward the red strips. Cut into 1-1/2" wide units. (Arrows show direction for pressing seams.)



Step 2: Sew all the four-square units together in pairs as shown. Sew (4) units and (3) singles together to make the top border. Repeat to make the bottom border. Press.



Step 3: Sew (7) units and (1) single together to make a side border. Repeat for a second side border. Press.

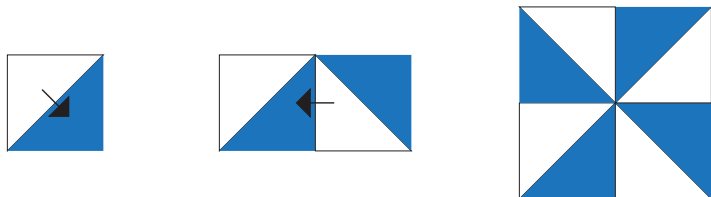


Step 4: Trim the Alice panel to 23-1/2" x 29-1/2", OR the width and length of the borders from Steps 2 and 3. Sew the top and bottom borders to the panel, with the red squares at the outer corners. Press toward the panel.

Step 5: Add one more unit to both side borders. Press. Sew to the sides of the panel with the red squares at the outer corners. Press toward the panel.

Step 6: Measure and trim two 2" red borders the width of the quilt. Sew to the top and bottom of the quilt. Press toward the quilt. In the same manner, sew the side borders to the quilt.

Step 7: Sew all the triangles together on the diagonal edge. Press toward the blue triangle. Trim dog-ears. Sew the triangles together in pairs as shown. Press. Sew the pairs together to make pinwheel blocks. Make (26) 6-1/2" blocks.



Step 8: Sew (5) pinwheels together for the top border. Repeat for the bottom border. Press. Sew to the top and bottom of the quilt.

Step 9: Sew (8) pinwheels together for the side borders. Sew to the quilt. Press.

Step 10: Piece, measure, trim and sew the 2" red print outer borders to the quilt. Press toward the red borders.

Finishing the Quilt

Layer, baste and quilt as desired. Bind with the 2-1/4" wide red binding strips.