

# ABC Blocks

Designed by Ramona Rose  
[www.ramonarose.net](http://www.ramonarose.net)









Finished blocks measure: 4-1/2" x 4-1/2" x 4-1/2"

**Pattern Level: Enthusiastic Novice**

"I am a total beginner and want to learn more!"

**ROBERT KAUFMAN**  
F A B R I C S

## Fabric and Supplies Needed

Color	Fabric	Name/SKU	Yardage	Color	Fabric	Name/SKU	Yardage
	A	ADE-12778-47 GRASS	1/2 yard		D	ADE-14693-267 ADVENTURE	1/2 yard
	B	ADE-12778-99 CHERRY	1/2 yard		E	ADE-14694-267 ADVENTURE	1/2 yard
	C	ADE-12778-130 SUNSHINE	1/2 yard		F	ADE-14693-63 SKY	2/3 yard
<p><i>The fabric requirements listed will yield six blocks, but feel free to make as many as you like!</i></p>				<p>You will also need: 2 bags of Soft'n'Crafty NuFoam</p>			

## Notes Before You Begin

- Please read through all of the instructions before beginning.
- All of the seam allowances are 1/4" unless otherwise noted.
- Press all seam allowances open after each seam is sewn, unless otherwise noted.
- Remember to measure twice and cut once!

## Cutting Instructions

### Fabric A, B, C, D, E

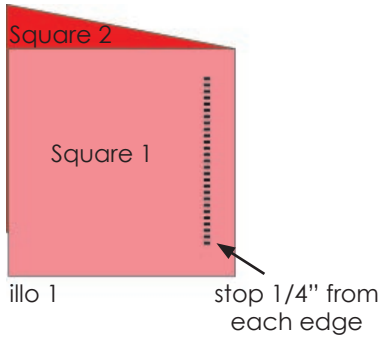
- Cut one strip 5" x Width of Fabric (WOF) from each fabric, and then subcut each strip into eight 5" x 5" squares (you'll need twenty-four print squares total).

### Fabric F

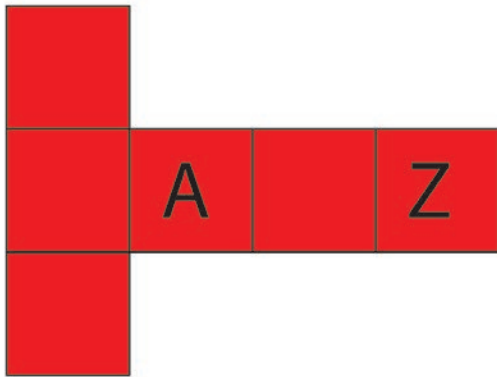
- Fussycut twelve 5" x 5" squares, centering a letter in each square. (there might be 1/8" of white showing on the sides, but it'll be hidden in the seam allowances).

*You may decide how many letters you want on each block, and which letters you want to use. You'll need six squares for each block, but you could cut letters for all six squares, or one letter per block, or three, etc (for this pattern, you'll put two letters on each block).*

## Assembly Instructions



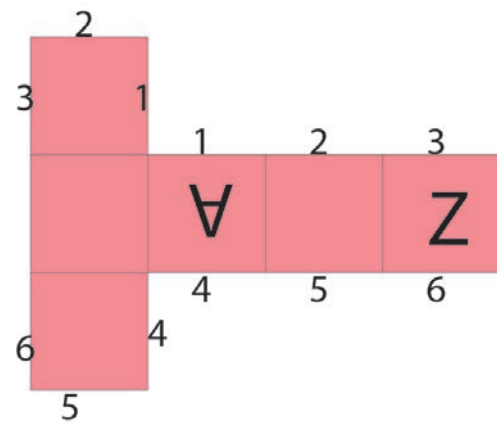
- Using a 1/4" seam allowance, sew two different squares along one side, right sides together, starting and stopping 1/4" from the edge (illo 1), backstitching at the beginning and end to lock your stitches.



- Continue attaching squares (starting and stopping 1/4" from the edge, locking stitches) together to make a T shape (illo 2).

*If you place the letter blocks as shown in the illustration, they'll be on opposite sides of the block.*

- Press all the seams (either open or to the side, it doesn't really matter).



- Refer to illo 3 and with right sides together, match and pin the edges (1 to 1, 2 to 2, etc...). Sew 1/4" from the edges, locking stitches (one edge will be left open).
- Turn the block right side out, cut NuFoam to 4-1/2" x 4-1/2" square, and stuff through the remaining open side (you'll have to cut several layers of foam). Hand stitch the block closed using a ladder stitch.
- Repeat to make five more blocks.

Enjoy your blocks!