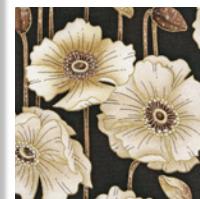


Spring Hill

Quilt designed by Heidi Pridemore

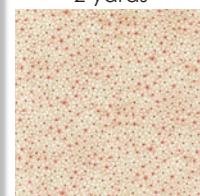
Advanced Beginner Level
Approximate size: 72" x 84"



EHJM-8465-14
Natural
2 yards



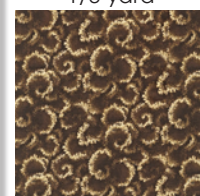
EHJ-8460-14
Natural
2 yards



EHJM-8463-200
Vintage
1/3 yard



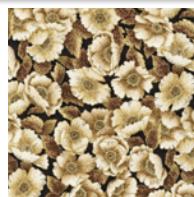
EHJM-8463-14
Natural
1/3 yard



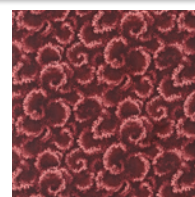
EHJ-8461-14
Natural
5/8 yard



EHJ-8460-200
Vintage
1 yard



EHJM-8464-14
Natural
1-3/4 yards



EHJ-8461-200
Vintage
1-1/4 yards



EHJM-8462-14
Natural
1 yard

Spring Hill

Quilt designed Heidi Pridemore

Quilt approximate size 72" x 84"

All border strip length measurements are approximate. Please measure your quilt top before cutting the length of each border.

Fabric Requirements

Fabric A: 2 yards of EHJM-8465-14

Fabric B: 2 yards of EHJ-8460-14

Fabric C: 1/3 yard of EHJM-8463-200

Fabric D: 1/3 yard of EHJM-8463-14

Fabric E: 5/8 yard of EHJ-8461-14

Fabric F: 1 yard of EHJM-8462-14

Fabric G: 1-1/4 yards of EHJ-8461-200

Fabric H: 1-3/4 yards of EHJM-8464-14

Fabric I: 1 yard of EHJ-8460-200

Backing: 7 yards of EHJM-8464-14

Fusible Web: 2 yards

Cutting:

Cut two 5-1/2" x 60-1/2" strips and two 8-1/2" x 60-1/2" strips from the length of fabric

Cut three 10-1/2" x 60-1/2" strips from the length of fabric.

Cut twenty-eight 2-1/2" x 4-1/2" strips.

Cut twenty-eight 2-1/2" x 4-1/2" strips.

Cut (112) 2-1/2" squares.

See instructions to cut sixty flower petals.

Cut eight 2-1/2" x width of fabric (WOF) strips. Piece the strips together to make two 2-1/2" x 68-1/2" strips and two 2-1/2" x 60-1/2" strips. See instructions to cut twelve circles, eighteen leaves and nine stem strips.

Cut eight 6-1/2" x WOF strips. Piece the strips together to make four 6-1/2" x 72-1/2" strips.

Cut eight 2-1/2" x WOF for the binding.

Cut and sew the backing into one 80" x 94" piece for the backing.

Assembly Instructions:

- 1) Following the manufacturer's instructions, trace sixty petals twelve circles and eighteen leaves onto the paper side of the fusible web. Roughly cut out each shape outside the drawn lines.
- 2) Press each fusible petal onto the back side of Fabric F. Press the circles and leaves onto the back side of Fabric G. Cut out each shape on the drawn lines.
- 3) To make the stems, press a remaining piece of fusible web onto the back side of the remaining Fabric G fabric. Using a ruler with a 45° angle mark, cut 1/2" bias strips for the stems.
- 4) Refer to the quilt photo and press the petals, circles, leaves and stems in place on each 10-1/2" x 60-1/2" Fabric B strip. Curve the bias stems as you press them in place.
- 5) Finish all the raw edges of appliques with a decorative stitch, such as a satin or buttonhole stitch to complete three flower panels.
- 6) Refer to the quilt photo and sew one 8-1/2" x 60-1/2" Fabric A strip to each side of the center flower panel to make the quilt top. Sew one side flower panel on each side of the quilt top. Sew one 5-1/2" x 60-1/2" Fabric A strip to each side of the quilt top.
- 7) Place one 2-1/2" Fabric E square on the left side of one 2-1/2" x 4-1/2" Fabric C strip, right sides together (Fig. 1). Sew across the diagonal of the square from the upper right corner to the lower left corner (fig. 1). Flip open the triangle formed and press (fig. 2). Trim away the excess fabric from behind the triangle leaving a 1/4" seam allowance.
- 8) Place another 2-1/2" Fabric E square on the right side of the 2-1/2" x 4-1/2" Fabric C strip, right sides together (Fig. 3). Sew across the diagonal of the square from the upper left corner to the lower right corner (fig. 3). Flip open the triangle formed and press (fig. 4). Trim away the excess fabric from behind the triangle leaving a 1/4" seam allowance. Repeat to make twenty-eight Fabric C flying geese units.
- 9) Repeat Steps 7 and 8 with twenty-eight 2-1/2" x 4-1/2" Fabric D strips and the remaining 2-1/2" Fabric E squares to make twenty-eight Fabric D flying geese units.
- 10) Refer to the quilt photo and sew together fourteen Fabric C and fourteen Fabric D flying geese units to make the top pieced border. Repeat to make the bottom pieced border. Sew the pieced borders to the top and bottom of the quilt top.
- 11) Sew one 2-1/2" x 68-1/2" Fabric G strip to each side of the quilt top. Sew one 2-1/2" x 60-1/2" Fabric G strip to the top and bottom of the quilt top.
- 12) Sew one 6-1/2" x 72-1/2" Fabric H strip to each side of the quilt top. Sew one 6-1/2" x 72-1/2" Fabric H strip to the top and bottom of the quilt top.
- 13) Layer, quilt and bind as desired.

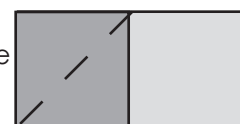


FIG. 1

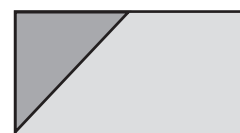


FIG. 2

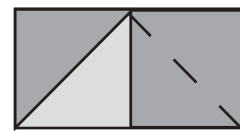


FIG. 3

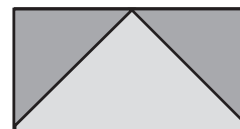


FIG. 4