

bark park

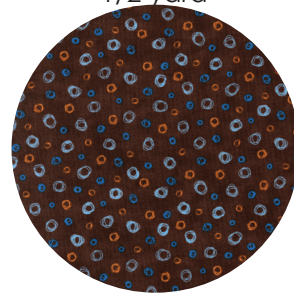
featuring
animal party!
Amy Schimler



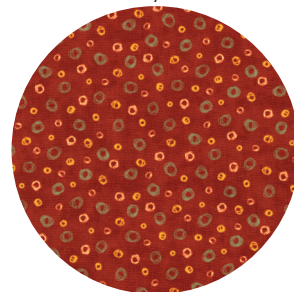
39-1/2" x 49"



AQK-7820-169 Earth
1/2 yard



AQK-7814-167 Chocolate
1/3 yard



AQK-7814-179 Rust
1 yard



AQK-7818-169 Earth
1/3 yard



AQK-7811-169 Earth
5/8 yard

download this pattern & more FREE at:

ROBERTKAUFMAN
F A B R I C S

www.robertkaufman.com

animal party!

by Amy Schimler

to benefit the charity organization

Quilts for Kids

A percentage of the wholesale cost of this fabric collection
will be donated to Quilts For Kids, Inc.

Bark Park

Quilt designed & Pieced by Nancy H. Lacey, Quilted by Diana Leslie, Twin Oaks Machine Quilting Quilt approximate size 39-1/2" x 49"
All border strip length measurements are approximate. Please measure your quilt top before cutting the length of each border.

Fabric Requirements

Fabric A-Tan Tossed Dogs, AQK 7820-169	1/2 yard
Fabric B- Brown Dots, AQK 7814-167	1/3 yard
Fabric C- Tan Dots, AQK 7814-179	1 yard
Fabric D- Brown Stripe, AQK 7818-169	1/3 yard
Fabric E- Tan Squares, AQK 7811-169	5/8 yard
Backing- Your Choice	1-3/4 yards

Cutting Instructions

Fabric A-	Cut twelve 7" squares.
Fabric B-	Cut twenty 3-1/2" squares.
Fabric C-	Cut twelve 1-1/2" x width of fabric (WOF) strips. Cut five 2-1/2" x WOF strips for the binding.
Fabric D-	Cut six 1-1/2" x WOF strips.
Fabric E-	Cut two 4-1/2" x 41-1/2" strips. Cut two 4-1/2" x 39-1/2" strips.
Backing-	Cut one 43" x 57" piece for the backing.

Assembly Instructions:

- 1) Sew one 1-1/2" x WOF Fabric C strip to each side of one 1-1/2" x WOF Fabric D strip to make one strip set (fig.1). Repeat to make six strip sets total.
- 2) From the six C/D strip sets, cross-cut thirty-one 3-1/2" x 7" pieced sashing strips (fig. 2).
- 3) To make one sashing row, starting and ending with one 3-1/2" Fabric B square, sew together four 3-1/2" Fabric B squares and three 3-1/2" x 7" pieced sashing strips, alternating them. Repeat to make five sashing rows total.
- 4) To make one block row, starting and ending with one 3-1/2" x 7" pieced sashing strip, sew together four 3-1/2" x 7" pieced sashing strips and three 7" Fabric A squares, alternating them. Repeat to make four Block rows.
- 5) Starting and ending with one sashing row, sew together the five sashing rows and four block rows to make the quilt top.
- 6) Sew one 4-1/2" x 41-1/2" Fabric E strip to each side of the quilt top. Sew one 4-1/2" x 39-1/2" Fabric E strip to the top and bottom of the quilt top.
- 7) Layer, quilt and bind as desired.

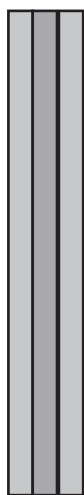


Fig. 1



Fig. 2