

# animal junction

Designed by Heidi Pridemore

featuring  
**animal party!**  
Amy Schimler



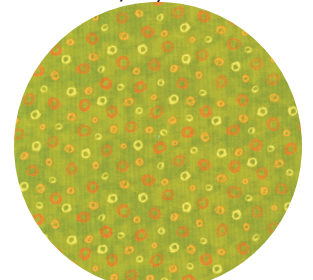
43" x 52"



AQK-7809-169 Earth  
1 yard



AQK-7811-169 Earth  
1/4 yard



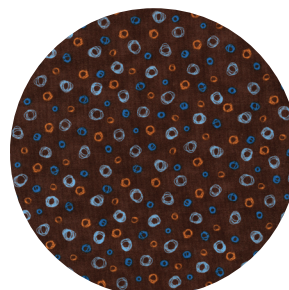
AQK-7814-50 Lime  
7/8 yard



AQK-7815-169 Earth  
3/8 yard



AQK-7818-169 Earth  
1/2 yard



AQK-7814-167  
Chocolate  
3/8 yard



AQK-7816-169 Earth  
3/8 yard

Instructions included for boy & girl  
colorstories as well

download this pattern & more FREE at:  
**ROBERTKAUFMAN**  
F A B R I C S  
[www.robertkaufman.com](http://www.robertkaufman.com)



# Animal Junction

Quilt designed by Heidi Pridemore

Quilt approximate size 43" x 52"

All border strip length measurements are approximate. Please measure your quilt top before cutting the length of each border.

## Fabric Requirements

**Fabric A- Panel, 1 yard**

**Fabric B- Squares, 1/4 yard**

**Fabric C- Small Dots, 7/8 yard**

**Fabric D- Tossed Animals, 3/8 yard**

**Fabric E- Medium Dots, 3/8 yard**

**Fabric F- Small Dots, 3/8 yard**

**Fabric G- Stripe, 1/2 yard**

**Backing- 3 yards**

**Fusible Web**

## Pink

AQK 7809-192

AQK 7811-192

AQK 7814-192

AQK 7815-192

AQK 7816-192

AQK 7814-193

AQK 7818-192

Your Choice

## Blue

AQK 7809-193

AQK 7811-193

AQK 7814-11

AQK 7815-193

AQK 7816-193

AQK 7814-193

AQK 7818-237

Your Choice

## Brown

AQK 7809-169

AQK 7811-169

AQK 7814-50

AQK 7815-169

AQK 7816-169

AQK 7814-169

AQK 7818-169

Your Choice

## Cutting Instructions

Fabric A- Fussy cut twelve 9-1/2" squares centering an animal panel in each.

Fabric B- See instructions to fussy cut eight 3" squares.

Fabric C- Cut six 1-1/2" x width of fabric (WOF) strips. Piece them together to make four 1-1/2" x 43-1/4" strips for the sashing.

Cut six 1-1/2" x 39-1/2" strips, nine 1-1/2" x 9-1/2" strips and four 1-1/2" x 4-1/2" strips for the sashing.

Fabric D- Cut two 4-1/2" x 41-1/4" strips for the top and bottom borders.

Fabric E- Cut eight 5-3/8" squares for the small blocks.

Fabric F- Cut eight 5-3/8" squares for the small blocks.

Fabric G- Cut six 2-1/2" x WOF strips for the binding.

Backing- Cut two 51" x WOF strips. Piece them together to make one 51" x 60" backing piece.

## Assembly Instructions:

- 1) Following the manufacturer's instructions, press a piece of fusible web onto the back side of Fabric B. Refer to the quilt photo to fussy cut eight 3" squares with four printed squares in each.
- 2) Press one 3" Fabric B square to the center of each 5-3/8" Fabric F square. Finish the raw edges of the smaller square with a decorative stitch such as a satin or buttonhole stitch.
- 3) Starting with one 5-3/8" Fabric E square, sew together four 5-3/8" Fabric E squares and four 5-3/8" Fabric B/F squares, alternating them to make one vertical small block row. Repeat to make a second small block row.
- 4) Starting with one 9-1/2" Fabric A square, sew together four 9-1/2" Fabric A squares and three 1-1/2" x 9-1/2" Fabric C strips, alternating them to make one animal panel row. Repeat to make three animal panel rows total.
- 5) Refer to the quilt photo for placement and sew together the three animal panel rows, two small block rows and six 1-1/2" x 39-1/2" Fabric C strips to make the quilt top.
- 6) Sew one 1-1/2" x 4-1/2" Fabric C strip to each end of both 4-1/2" x 41-1/4" Fabric D strips.
- 7) Sew one 1-1/2" x 43-1/4" Fabric C strip to the top and bottom of the Fabric D strips from Step 6 to make the top and bottom Borders.
- 8) Sew the top and bottom borders to the quilt top.
- 9) Layer, quilt and bind as desired.



A percentage of the wholesale cost of this fabric collection will be donated to Quilts For Kids, Inc.

© 2009 Robert Kaufman Co., Inc.  
For Individual Use Only - Not for Resale