

# STACKED STARS

Designed by Elise Lea for RK  
[www.robertkaufman.com](http://www.robertkaufman.com)

Featuring *forage*   
*noodlehead*



Finished quilt measures: 59" x 70"

Difficulty Rating: **Beginner**

**ROBERTKAUFMAN**  
F A B R I C S




For questions about this pattern, please email [Patterns@RobertKaufman.com](mailto:Patterns@RobertKaufman.com).

## Fabric and Supplies Needed

*Fabric amounts based on yardage that is 42" wide.*

Color	Fabric	Name/SKU	Yardage	Color	Fabric	Name/SKU	Yardage
	A	AFH-17981-154 CHAMPAGNE	1/3 yard		J	AFH-17984-305 GRAPHITE	1/4 yard
	B	AFH-17983-188 PEPPER	1/3 yard		K	AFH-17981-62 INDIGO	1/4 yard
	C	AFH-17985-154 CHAMPAGNE	1/3 yard		L	AFH-17983-69 MIDNIGHT	1/4 yard
	D	AFH-17985-338 CADET	1/4 yard		M	AFH-17982-69 MIDNIGHT	1/2 yard
	E	AFH-17984-144 PEACH	1/4 yard		N	AFH-17983-62 INDIGO	1/4 yard
	F	AFH-17982-184 CHARCOAL	1/4 yard		O	AFH-17984-188 PEPPER	1/4 yard
	G	AFH-17985-68 DUSTY BLUE	1/4 yard		P	AFH-17982-233 BERRY	1/4 yard
	H	AFH-17985-275 LEATHER	1/4 yard		Q	AFH-17981-185 STEEL	1/4 yard
	I	AFH-17984-275 LEATHER	1/4 yard		R	AFH-17986-347 OYSTER	7/8 yard

Fabric amounts based on yardage that is 42" wide.

Color	Fabric	Name/SKU	Yardage	Color	Fabric	Name/SKU	Yardage
	S	AFH-17986-186 SILVER	1-1/2 yard		Binding*	AFH-17982-69 MIDNIGHT <i>*Also used for Fabric M</i>	5/8 yard
	T	AFH-17986-407 CHAMBRAY	7/8 yard	<div>You will also need: 3-3/4 yards for backing</div>			
Copyright 2018, Robert Kaufman For individual use only - Not for resale							

## Notes Before You Begin

- Read through all of the instructions before beginning.
- All of the seam allowances are 1/4" unless otherwise noted.
- Press seam allowances open unless otherwise noted.
- Width of fabric (WOF) is equal to at least 42" wide.
- Right sides together has been abbreviated to RST.
- Remember to measure twice and cut once!

## Cutting Instructions

### From each of Fabrics A-C, cut:

one 5-1/2" x WOF strip. Subcut:  
 two 5-1/2" squares  
 one 4-1/2" x WOF strip. Subcut:  
 eight 4-1/2" squares for the HSTs

### From each of Fabrics D-Q, cut:

one 5-1/2" x WOF strip. Subcut:  
 one 5-1/2" square  
 Trim the remainder of the strip to 4-1/2" wide, then subcut:  
 four 4-1/2" squares for the HSTs

### From the remainder of Fabric M, cut:

six 1-1/2" x WOF strips. Sew together, end-to-end in pairs, then trim:  
 three 1-1/2" x 70-1/2" sashing strips



**From each of Fabrics R and T, cut:**

three 4-1/2" x WOF strips. Subcut:  
twenty 4-1/2" squares for the HSTs  
two 4" x WOF strips. Subcut:  
twenty 4" squares  
four 1-1/2" x WOF strips. Subcut:  
ten 1-1/2" x 5-1/2" strips  
ten 1-1/2" x 7-1/2" strips

**From Fabric S, cut:**

five 4-1/2" x WOF strips. Subcut:  
forty 4-1/2" squares for the HSTs  
four 4" x WOF strips. Subcut:  
forty 4" squares  
eight 1-1/2" x WOF strips. Subcut:  
twenty 1-1/2" x 5-1/2" strips  
twenty 1-1/2" x 7-1/2" strips

**From the Binding Fabric, cut:**

seven 2-1/2" x WOF strips

## Assemble the Half-Square Triangles (HSTs)

**Step 1:** Pair a 4-1/2" Fabric R square with a 4-1/2" Fabric A square, RST. Mark a diagonal line on the wrong side of one square. Sew 1/4" away from both sides of the marked line. Cut on the marked line, creating two half-square triangles (HSTs). Press toward the darker fabric. Trim to 4" square. Repeat to make eight R/A HSTs.



*Note: If it is important to you that the lines in directional prints all face the same way in the finished quilt, mark the diagonal line from top left to bottom right in half of the squares and from top right to bottom left in the remaining half.*

Step 2: Repeat Step 1 to create:



eight R/D HSTs



eight R/E HSTs



eight R/C HSTs



eight R/F HSTs





eight S/G HSTs



eight S/B HSTs



eight S/H HSTs



eight S/A HSTs



eight S/I HSTs



eight T/J HSTs



eight T/C HSTs



eight T/K HSTs



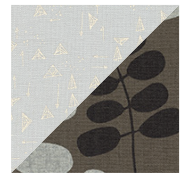
eight T/L HSTs



eight T/M HSTs



eight S/N HSTs



eight S/O HSTs



eight S/B HSTs

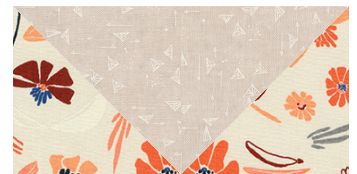


eight S/P HSTs



eight S/Q HSTs

**Step 3:** Sew two identical HSTs together along the background fabric edge (Fabrics R, S or T). Press. Repeat with all HSTs.



## Assemble the Star Blocks



**Step 4:** Sew a 1-1/2" x 5-1/2" Fabric R strip to the left and right edges of a 5-1/2" Fabric A square. Press. Sew a 1-1/2" x 7-1/2" Fabric R strip to the top and bottom edges of the Fabric A square. Press.

**Step 5:** Gather:  
one completed Step 4 unit  
four 4" Fabric R squares  
four R/A HST pairs

Arrange in three rows of three, as shown. Sew to form rows, pressing the seams away from the HST pairs. Sew the rows together, nesting the seams. Press. The resulting block should measure 14-1/2" square.

Repeat Steps 4 and 5 to make all twenty Star Blocks. Refer to the Quilt Assembly Diagram for print and background fabric pairings.

## Assemble the Quilt



**Step 6:** Arrange the blocks into four columns of five blocks each. Note the fabric placement and block orientation in the Quilt Assembly Diagram.

**Step 7:** Sew the blocks together to form columns. Press.

**Step 8:** Sew the columns together to form the quilt center, placing a Fabric M sashing strip between each column. Press the seams open.

Your quilt top is complete. Baste, quilt, bind and enjoy!

This pattern may be used for personal purposes only and may not be reproduced in any form without the express permission from Robert Kaufman Fabrics. This pattern is not for resale. All patterns, unless otherwise attributed, are © Robert Kaufman Co., Inc. 2005-2018. All rights reserved.