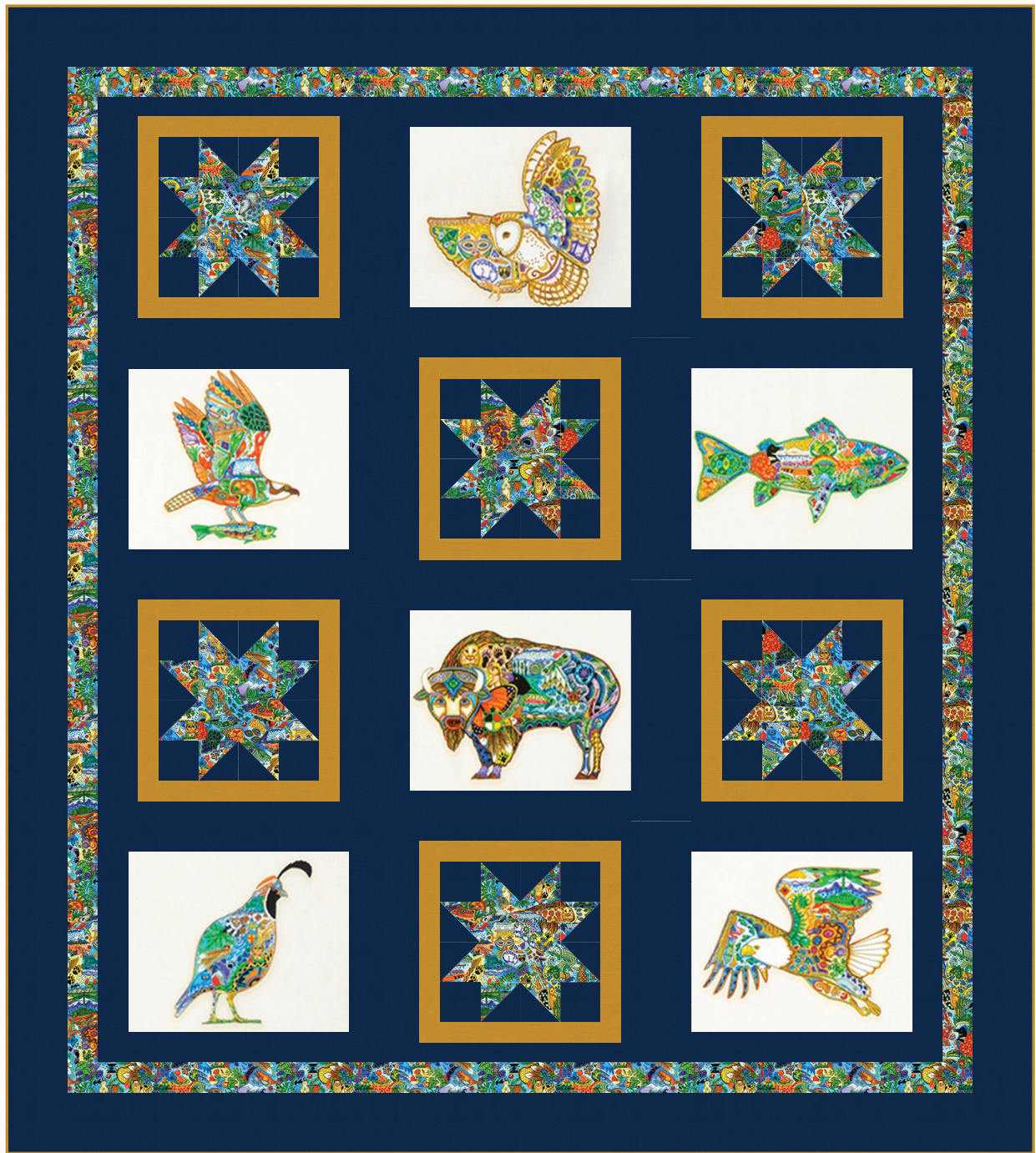


# SPIRIT STARS

Designed by Ariga Mahmoudlou for RK Featuring  
[www.robertkaufman.com](http://www.robertkaufman.com)

*Animal Spirits*



Finished quilt measures: 51" x 57"

Difficulty Rating: **Beginner**

**ROBERTKAUFMAN**  
F A B R I C S

For questions about this pattern, please email [Patterns@RobertKaufman.com](mailto:Patterns@RobertKaufman.com).

## Fabric and Supplies Needed

*Fabric amounts based on yardage that is 42" wide.*

Color	Fabric	Name/SKU	Yardage	Color	Fabric	Name/SKU	Yardage
	A	AUAD-18413-205 MULTI	2/3 yard (one full panel)		D	K001-458 STORM	1-5/8 yard
	B	AUAD-18415-205 MULTI	5/8 yard		Binding*	K001-1478 YARROW <i>*Also used for Fabric C</i>	1/2 yard
	C	K001-1478 YARROW	1/3 yard	<p>You will also need: 3-1/3 yards for backing</p>			

Copyright 2018, Robert Kaufman  
For individual use only - Not for resale

### Notes Before You Begin

- Read through all of the instructions before beginning.
- All of the seam allowances are 1/4" unless otherwise noted.
- Press seam allowances open unless otherwise noted.
- Width of fabric (WOF) is equal to at least 42" wide.
- Right sides together has been abbreviated to RST.
- Remember to measure twice and cut once!

## Cutting Instructions

### **From Fabric A, fussy cut:**

six 9-1/2" x 11-1/2" rectangles

### **From Fabric B, cut:**

one 4-1/2" x WOF strip. Subcut:

six 4-1/2" squares

two 3" x WOF strips. Subcut:

twenty-four 3" squares for the HSTs

five 2" x WOF strips. Sew together, end-to-end, then trim:

two 2" x 51-1/2" side inner borders

two 2" x 42-1/2" top/bottom inner borders

### **From Fabric C, cut:**

six 1-1/2" x WOF strips. Sew together, end-to-end, then trim:

twelve 1-1/2" x 8-1/2" Star Block top/bottom borders

twelve 1-1/2" x 10-1/2" Star Block side borders

### **From Fabric D, cut:**

three 4" x WOF strips. Subcut:

eight 4" x 12-1/2" rectangles

five 3-1/2" x WOF strips. Sew together, end-to-end, then trim:

two 3-1/2" x 57-1/2" side outer borders

two 3-1/2" x 45-1/2" top/bottom outer borders

two 3" x WOF strips. Subcut:

twenty-four 3" squares for the HSTs

three 2-1/2" x WOF strips. Subcut:

four 2-1/2" x 12-1/2" rectangles

twenty-four 2-1/2" squares

six 2" x WOF strips. Subcut:

twelve 2" x 11-1/2" Panel Block top/bottom borders

four 2" x 12-1/2" rectangles

three 1-1/2" x WOF strips. Subcut:

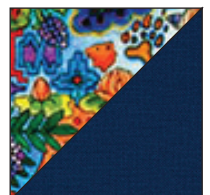
twelve 1-1/2" x 10-1/2" Star Block top/bottom borders

### **From the Binding Fabric, cut:**

six 2-1/2" x WOF strips

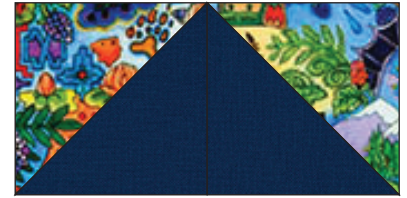
## Assemble the Star Blocks

**Step 1:** Pair a 3" Fabric B square with a 3" Fabric D square, RST. Mark a diagonal line on the wrong side of one square. Sew 1/4" away from both sides of the marked line. Cut on the marked line, creating two half-square triangles (HSTs). Press toward the darker fabric. Trim to 2-1/2" square. Repeat to make forty-eight B/D HSTs.





**Step 2:** Sew one pair of B/D HSTs together, along a Fabric D edge, as shown. Press. Repeat for all HSTs to make twenty-four pairs.



**Step 3:** Gather:  
 four 2-1/2" Fabric D squares  
 four HST pairs from Step 2  
 one 4-1/2" Fabric B square

Arrange as shown, following the Block Assembly Diagram. Sew together, pressing the seams away from the Step 2 units. Repeat to make six blocks.

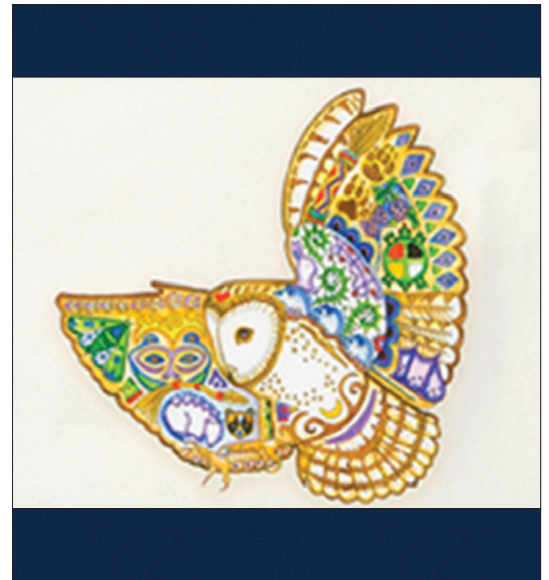
**Step 4:** Sew a 1-1/2" x 8-1/2" Fabric C strip to the top and bottom edges of a block. Press. Sew a 1-1/2" x 10-1/2" Fabric C strip to the left and right edges of a block. Press. Repeat Steps to make six blocks.



**Step 5:** Sew a 1-1/2" x 10-1/2" Fabric D strip to the top and bottom edges of a block. Press. Repeat Steps to make six blocks. The Star Block should measure 10-1/2" x 12-1/2".

## Assemble the Panel Blocks

**Step 6:** Sew a 2" x 11-1/2" Fabric D strip to the top and bottom edges of a Fabric A rectangle. Press. Repeat to make six blocks. The resulting blocks should measure 11-1/2" x 12-1/2".



## Assemble the Quilt



**Step 7:** Gather:

two Star Blocks

one Panel Block

two 4" x 12-1/2" Fabric D rectangles

two 2-1/2" x 12-1/2" Fabric D rectangles

Arrange as shown in the Quilt Assembly Diagram to make Row 1. Sew together, pressing the seams toward the Fabric D rectangles. Repeat to make Row 3 of the quilt.

**Step 8:** Gather:

two Panel Blocks

one Star Block

two 4" x 12-1/2" Fabric D rectangles

two 2" x 12-1/2" Fabric D rectangles

Arrange as shown in the Quilt Assembly Diagram to make Row 2. Sew together, pressing the seams toward the Fabric D rectangles. Repeat to make Row 4 of the quilt.

**Step 9:** Sew Rows 1-4 together, pressing the row seams open or to one side.

**Step 10:** Sew the top and bottom inner borders to the quilt center. Press toward the borders. Sew the side inner borders to the sides of the quilt center. Press toward the borders.

**Step 11:** Sew the top and bottom outer borders to the quilt center. Press toward the borders. Sew the side outer borders to the sides of the quilt center. Press toward the borders.

Your quilt top is complete. Baste, quilt, bind and enjoy!