

SNOWY DAYS

Designed by Robert Kaufman Fabrics
www.robertkaufman.com

Featuring **Snow Pals**



Finished quilt measures: 72" x 76"

Pattern Level: Enthusiastic Novice





"I am a total beginner and want to learn more!"

ROBERTKAUFMAN
F A B R I C S

For questions about this pattern, please email Patterns@RobertKaufman.com.

Fabric and Supplies Needed

Fabric amounts based on yardage that is 42" wide.

Color	Fabric	Name/SKU	Yardage	Color	Fabric	Name/SKU	Yardage
	A	AHL-16931-68 DUSTY BLUE	2 yards (three full panels)		C	SRKM-14476-88 ICE	1 yard
	B	SRKM-14476-1 WHITE	3/4 yard		D	SRKM-14476-277 WINTER	2-1/2 yard
<p>Copyright 2017, Robert Kaufman For individual use only - Not for resale</p>				<p>You will also need: 4-1/2 yards for backing 2/3 yards for binding</p>			

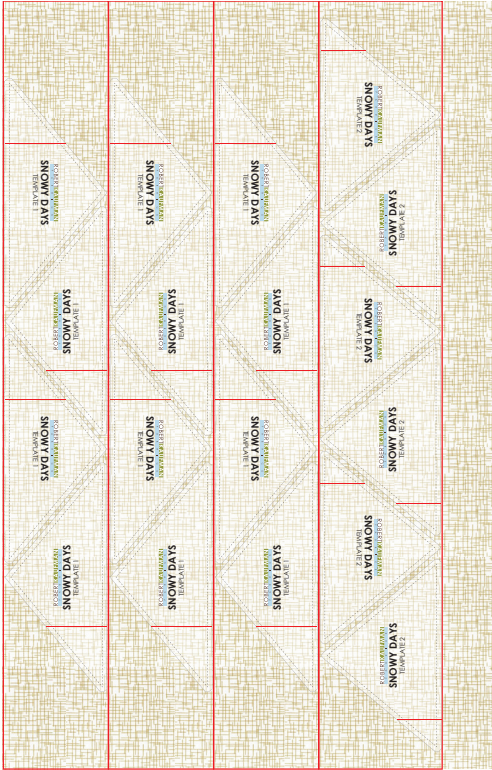
Notes Before You Begin

- Read through all of the instructions before beginning.
- All of the seam allowances are 1/4" unless otherwise noted.
- Press seam allowances open unless otherwise noted.
- Width of fabric (WOF) is equal to at least 42" wide.
- Right sides together has been abbreviated to RST.
- Remember to measure twice and cut once!

Cutting Instructions

From Fabric A, fussy cut:
fifteen 12-1/2" x 10-1/2" rectangles

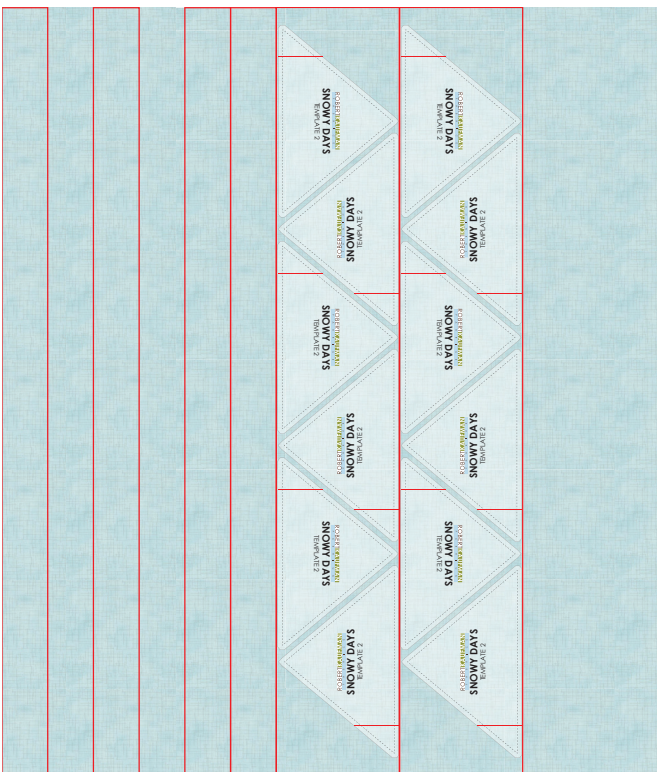
From Fabric B, cut:



twelve of Template 1
six of Template 2

Tip: To maximize the yardage, cut three 5-3/4" x WOF strips for cutting the Template 1 pieces and one 6-3/4" x WOF strip for cutting the Template 2 pieces.

From Fabric C, cut:



six 2-1/2" x WOF strips. Sew together, end-to-end, then trim to yield:

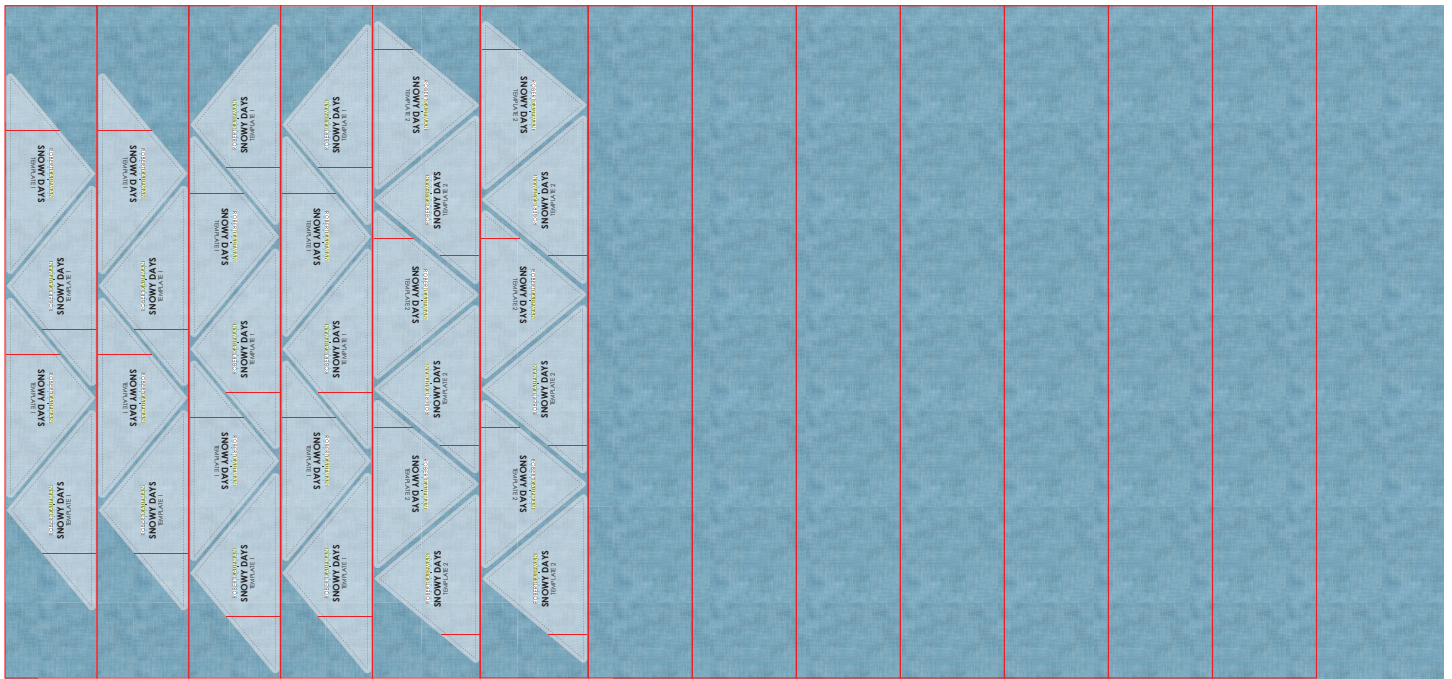
two 2-1/2" x 60-1/2" top and bottom inner borders

two 2-1/2" x 64-1/2" side inner borders

twelve of Template 2

Tip: To maximize the yardage, cut two 6-3/4" x WOF strips for cutting the Template 1 pieces.

From Fabric D, cut:



eighteen of Template 1

twelve of Template 2

seven 6-1/2" x WOF strips. Sew together, end-to-end, then trim to yield:

two 6-1/2" x 64-1/2" top and

bottom outer borders

two 6-1/2" x 76-1/2" side outer

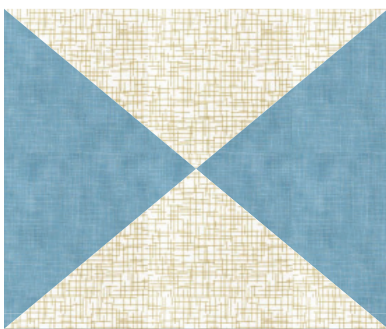
borders

Tip: To maximize the yardage, cut four 5-3/4" x WOF strips for cutting the Template 1 pieces and two 6-3/4" x WOF strips for cutting the Template 2 pieces.

From the binding fabric, cut:

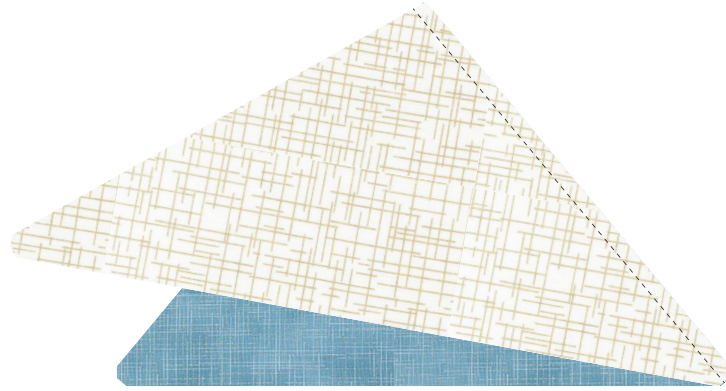
eight 2-1/2" x WOF strips

Assemble the Pieced Blocks

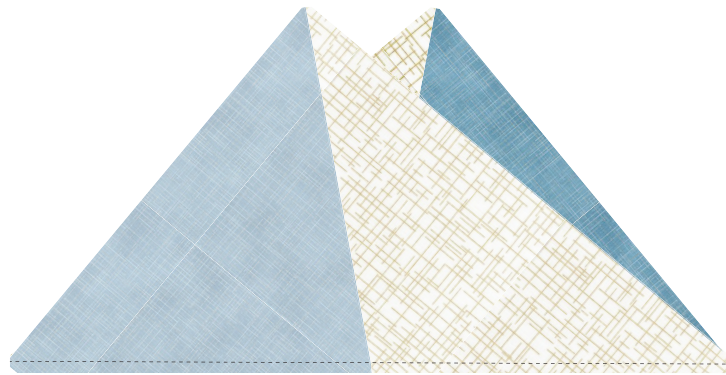


Step 1: Arrange two Fabric B/Template 1 pieces and two Fabric D/Template 2 pieces, as shown in the Block Assembly Diagram.

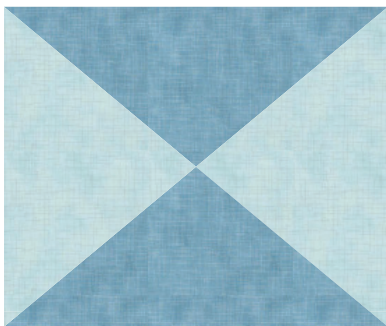
Step 2: Sew one Template 1 and Template 2 piece together, offsetting the pieces using the notches at the points. Press the seam toward the darker fabric. Repeat for the remaining two triangles.



Step 3: Sew the two pairs of triangles together to form the block. Note that the center seams are offset slightly so that they line up when the block is pressed open.

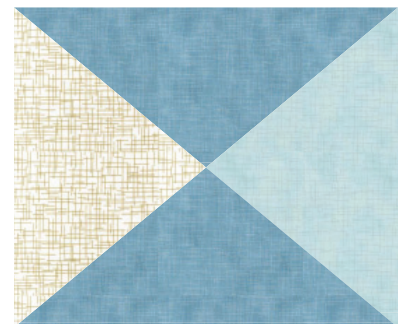


Repeat Steps 1-3 to make six total blocks like this.



Step 4: Arrange two Fabric D/Template 1 pieces and two Fabric C/Template 2 pieces, as shown in the Block Assembly Diagram. Repeat the process in Steps 2-3 to create three blocks.

Step 5: Arrange two Fabric D/Template 1 pieces, one Fabric B/Template 2 piece and one Fabric C/Template 2 piece, as shown in the Block Assembly Diagram. Repeat the process in Steps 2-3 to create six blocks.



Assemble the Quilt



Step 6: Arrange the Fabric A blocks and three styles of pieced blocks into six rows of five blocks. Note the fabric placement and block orientation in the Quilt Assembly Diagram.

Step 7: Sew the blocks together to form rows. Press the seams toward the Fabric A panel pieces.

Step 8: Sew the rows together to form the quilt center. Press the row seams open.

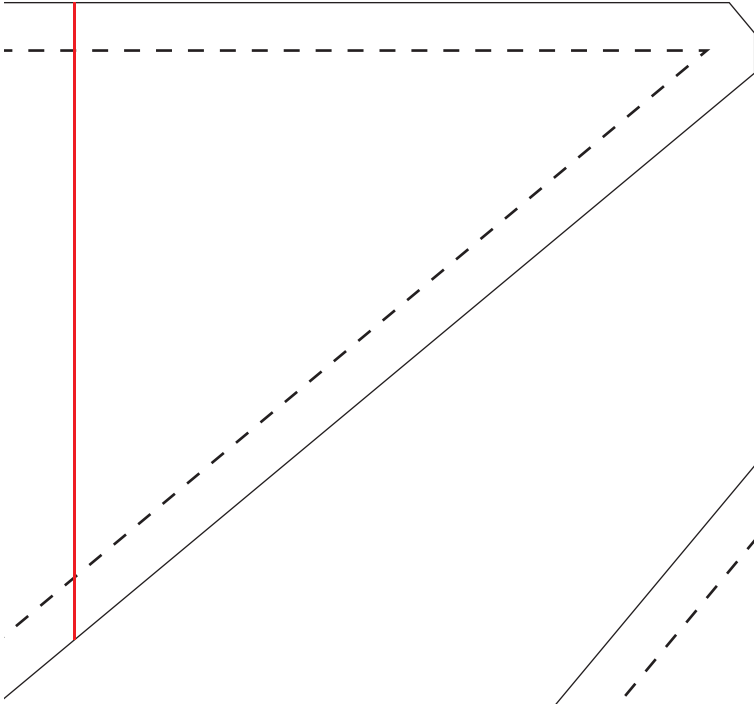
Step 9: Sew the top and bottom inner borders to the quilt center. Press toward the borders. Sew the side inner borders to the sides of the quilt center. Press toward the borders.

Step 10: Sew the top and bottom outer borders to the quilt center. Press toward the borders. Sew the side outer borders to the sides of the quilt center. Press toward the borders.

Your quilt top is now complete! Baste, quilt, bind and enjoy!

Print at 100%.

Align two parts of Template 1 along the red line. Tape together.



ROBERT KAUFMAN
F A B R I C S

SNOWY DAYS

TEMPLATE 1

1" box for
scale

1" box for
scale

Align two parts of Template 2 along the red line. Tape together.

