

# REFLECTIONS

Designed by Karen Lewis  
[www.karenlewistextiles.blogspot.com](http://www.karenlewistextiles.blogspot.com)

Featuring **KONA**® 9 COLOR  
cotton solids 101 OF THE  
2012 YEAR



Finished quilt measures: 64" x 80"

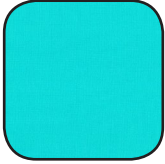


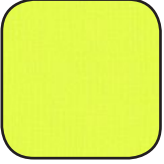
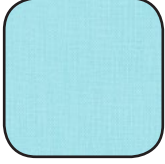
Difficulty Rating: **Intermediate**

**ROBERT KAUFMAN**  
F A B R I C S

For questions about this pattern, please email [Patterns@RobertKaufman.com](mailto:Patterns@RobertKaufman.com).

## Fabric and Supplies Needed

*Fabric amounts based on yardage that is 42" wide.*

Color	Fabric	Name/SKU	Yardage	Color	Fabric	Name/SKU	Yardage
	A	K001-1789 SPLASH	5 yards		D	K001-860 ACID LIME	7/8 yard
	B	K001-1373 TEAL BLUE	2-1/2 yards		Binding*	K001-860 ACID LIME <i>*Also used for Fabric D</i>	5/8 yards
	C	K001-1005 AQUA	2-1/2 yards	<p>You will also need: 5 yards for backing</p>			
<p>Copyright 2018, Robert Kaufman For individual use only - Not for resale</p>							

### Notes Before You Begin

- Read through all of the instructions before beginning.
- All of the seam allowances are 1/4" unless otherwise noted.
- Press seam allowances open unless otherwise noted.
- Width of fabric (WOF) is equal to at least 42" wide.
- Right sides together has been abbreviated to RST.
- Remember to measure twice and cut once!
- Print one copy of the template at 100% (do not scale).

## Cutting Instructions

### From Fabric A, cut:

seventy-five of Template 1

*Tip: Cut 9" squares first, then cut the template from each square.*

### From Fabric B, cut:

seventy-four of Template 2

*Tip: cut 8-1/2" x WOF strips, then cut 8 Template 2 pieces per strip, as shown.*



### From Fabric C, cut:

seventy-six of Template 2

*Tip: cut 8-1/2" x WOF strips, then cut 8 Template 2 pieces per strip, as shown.*



### From Fabric D, cut:

three of Template 1

*Tip: Cut 9" squares first, then cut the template from each square.*

two 8-1/2" squares

six of Template 2

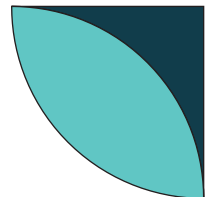
### From the Binding Fabric, cut:

eight 2-1/2" x WOF strips

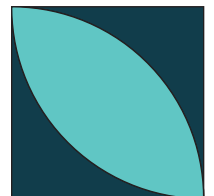
## Assemble the Block

*Tip: Before sewing pieces together, fold and finger press a crease along the centers of the curved edges. This will aid in pinning and sewing.*

**Step 1:** Place one of the Fabric A/Template 1 orange peel pieces and one Fabric B/Template 2 outer pieces right sides together, matching the creases. Pin along curve. Sew along this curve with a scant 1/4" and press towards the center.



**Step 2:** With right sides facing and aligning the creases again, pin and sew the Template 1 piece in place. Press towards the center as before.

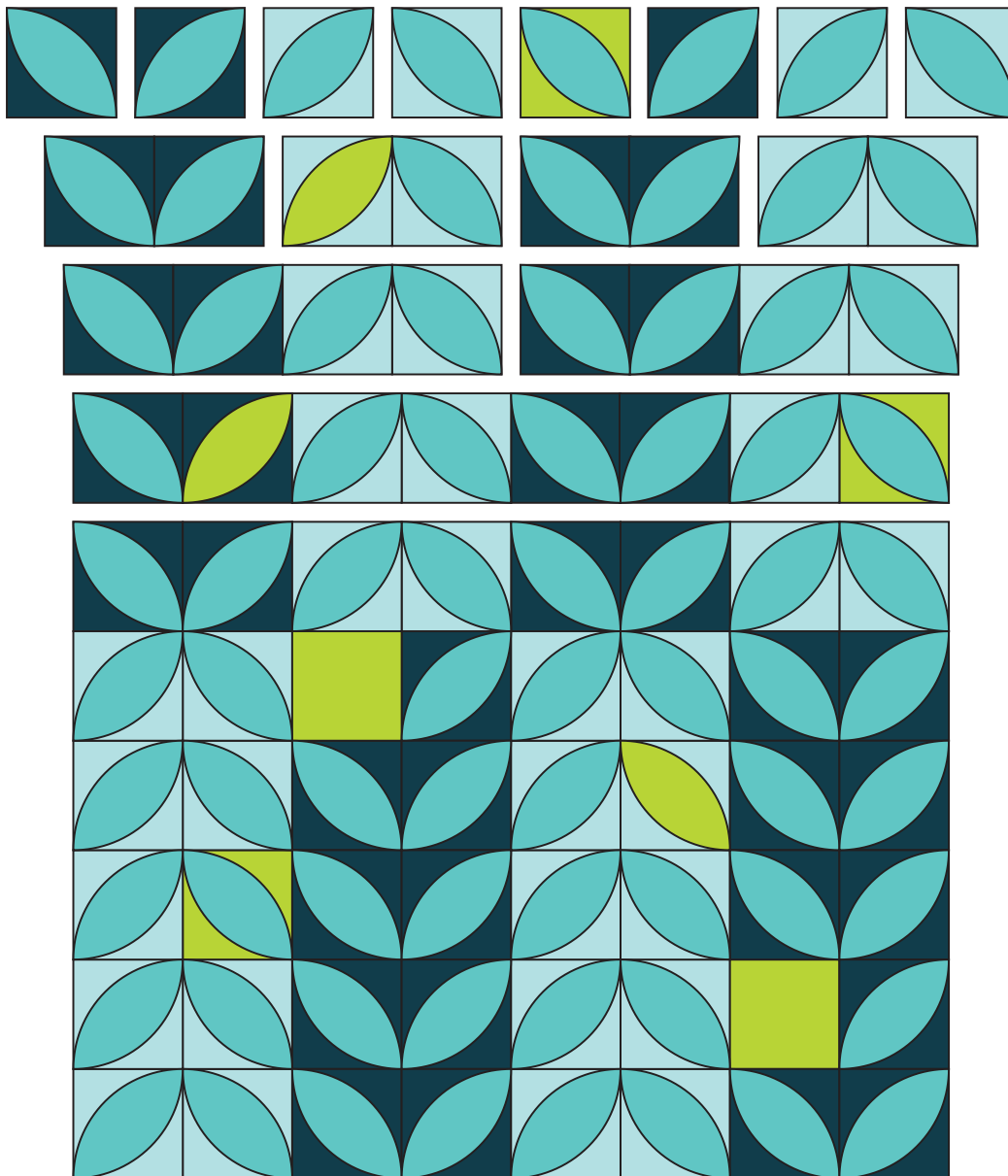


**Step 3:** Aligning the diagonal of your square ruler through the orange peel, trim the block to 8-1/2" square, leaving 1/4" of the Template 2 piece beyond the orange peel point.



**Step 4:** Repeat with the remaining pieces, referring to the Quilt Assembly Diagram for fabric pairings, to yield the correct number of orange peel blocks.

## Templates



**Step 5:** Arrange your blocks ten rows of eight blocks each, as shown in the Quilt Assembly Diagram. Sew the rows together, pressing the seams in opposite directions every other row. Sew the rows together and press.

Your quilt top is complete. Baste, quilt, bind and enjoy!

# Templates

Print at 100%.

Check size printed correctly using 1" box for scale prior to cutting fabric.

Align two pieces of Template along red line and tape together.

**ROBERTKAUFMAN**  
F A B R I C S

**Kona COTY 2019**

TEMPLATE 1

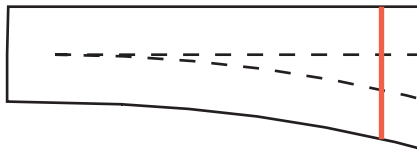
1" box for  
scale

ROBERTKAUFMAN  
F A B R I C S

# Kona COTY 2019

## TEMPLATE 2

Align two pieces of Template  
along red line and tape together.



1" box for  
scale

This pattern may be used for personal purposes only and may not be reproduced in any form without the express permission from Robert Kaufman Fabrics. This pattern is not for resale. All patterns, unless otherwise attributed, are © Robert Kaufman Co., Inc. 2005-2018. All rights reserved.