

Rainy Day Jacket

Designed by Ramona Rose

www.ramonarose.net

Featuring

Urban Zoologie
slicker™
By Ann Kelle




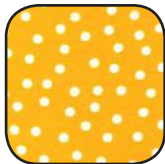
Size 4T

Pattern Level: Experienced Intermediate

"I know the ropes and would like to test my skills!"

ROBERTKAUFMAN
F A B R I C S

Fabric and Supplies Needed

Color	Fabric	Name/SKU	Yardage	Color	Fabric	Name/SKU	Yardage
	A	AAKL-14723-9 NAVY	2 yards		B	AAKF-12136-130 SUNSHINE	2 yard

You will also need:
Clover Wonder Clips or small binder clips, Washi or Scotch tape,
Teflon or Roller Foot (Optional), Two buttons or snaps.

Notes Before You Begin

General Notes

- Please read through all of the instructions before beginning.
- All of the seam allowances are 1/4" unless otherwise noted.
- Width of fabric (WOF) is equal to at least 42" wide.
- Press all seam allowances open after each seam is sewn, unless otherwise noted.
- Remember to measure twice and cut once!

Suggestions For Sewing Slicker Fabric

- Avoid pins whenever possible (or keep them in the seam allowance). Instead, use Washi tape or Scotch tape and Clover Clips.
- A teflon or roller foot is REALLY helpful when sewing Slicker, but it's also possible to use tissue paper or place Scotch tape (the Magic type) on the underside of your regular foot.
- Don't press Slicker with your regular iron unless you have teflon pressing sheets. Instead, use a bone folder or a seam roller, or your fingers, and just press the seams in place. Top-stitching will hold the seam allowances down.

Sizing

- This jacket was designed for a tall, skinny, 4-year-old in Southern California. It will NOT provide sufficient warmth or protection in a major storm, nor is it made with extra room for many layers underneath. It's a light little spring/summer rain coat so a kiddo can play without getting sopping wet.

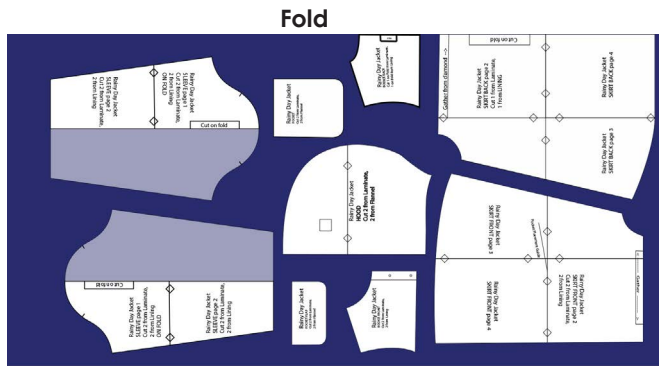
Cutting Instructions

- Print the pattern pieces at 100% and tape together matching the lettered triangles.
- Cut out pattern pieces along black line.
- Fold fabric in half selvage to selvage and follow the Fabric Layout on page 3 to place the pattern pieces on the fabric.

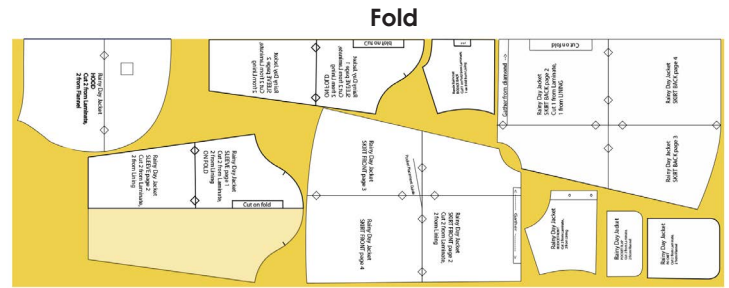
Fabric A and B

- Cut two Bodice Fronts, one Bodice back on fold, two Skirt Fronts, one Skirt Back on fold, two Hoods, two Sleeves on fold, two Pockets and two Pocket Flaps.

Cutting Layout



Fabric A: 58" wide slicker fabric



Fabric B: 44" wide flannel fabric

Assembly Instructions

Make and Attach the Pockets

1. Place a Pocket Outer and Lining right sides together. Starting on a side, sew all the way around the pocket, leaving a 2" opening. Trim at all of the corners (fig. 1).
2. Turn the pocket right side out through the opening. Use a bone folder, or the equivalent, to open push the seams out and finger press it flat. Fold the fabric in at the opening, so it looks like it was sewn also. Repeat to make a second pocket
3. Place a pocket on the Skirt Front so the top of the pocket lines up with the pocket guideline (you may need to lay the paper pattern over it as a guide). Use washi or scotch tape to hold the pocket piece in place.
4. Edge-stitch three sides to make a pocket and to close the opening on the side. Make sure you backstitch at the beginning and end to lock your stitches. Sew another line of top-stitching 1/8" inside the edge-stitching if desired (fig. 2). Remove the washi tape. Repeat to attach the second pocket.



fig. 1

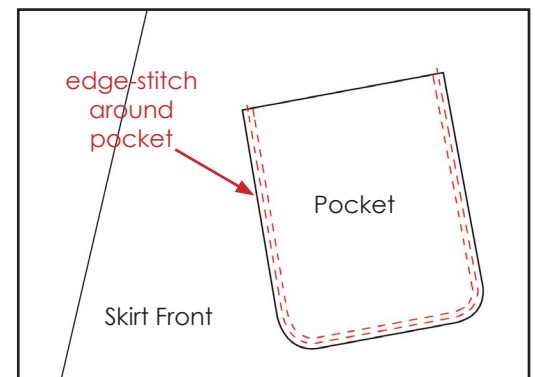


fig. 2

Make and Attach the Pocket Flaps

1. Place a Flap Outer and Lining right side together. Sew together, leaving the top edge open (fig. 3).
2. Clip the round corners, turn it right side out, finger press it flat, and then top/edge-stitch it to match the pocket.

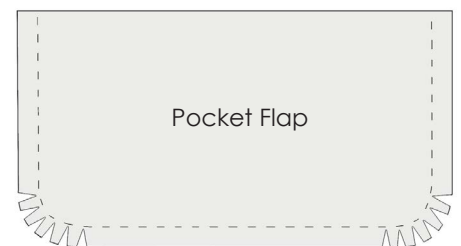


fig. 3

3. On the Skirt Front, measure 1/2" up from the pocket's top edge and place the pocket flap's open edge along this line, lining side up, centering it against the pocket, so it looks like the pocket flap is open. Tape it in place, then sew with a scant 1/4" along the open edge of the flap (fig. 4).

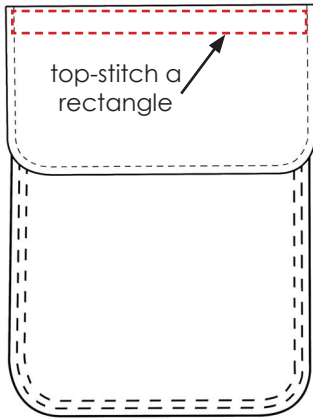
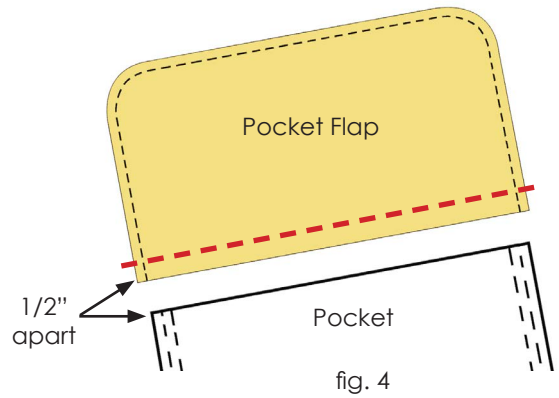


fig. 5

4. Fold the flap closed, (use more washi tape), and sew a long skinny rectangle, edge-stitching along the top edge of the flap (along the fold), then down a generous 1/4", straight across the flap (parallel to the fold), and back up (fig. 5). This box keeps the flap folded in place, and encloses the raw edge of the flap so it all looks pretty.

5. Repeat to make the pocket on the other skirt front.

Assemble the Jacket

1. Sew a gathering (or basting) stitch on the Sleeves, Skirt Fronts and Skirt Back (both outers and linings) according to the pattern pieces.
2. Sew the Skirts to the Bodice pieces (right sides together), adjusting the gathers to fit the bodice pieces. Top-stitch along the seams to the Bodice pieces to keep the seam allowances laying flat (fig. 6). Repeat with the Lining pieces.

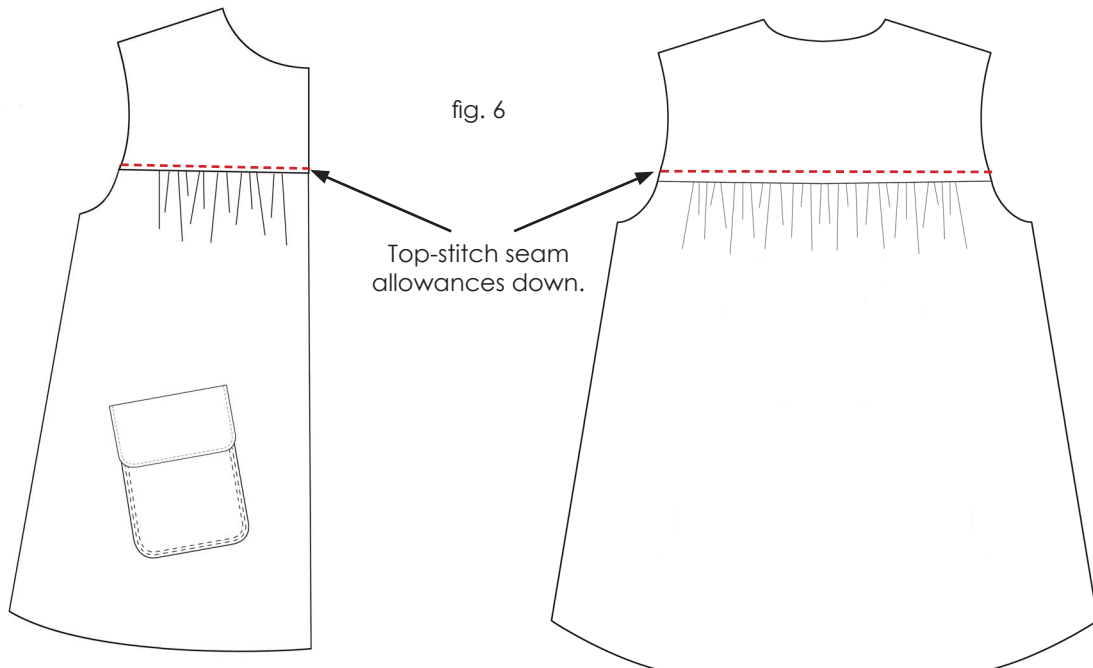


fig. 6

3. With right sides together, sew the front pieces to the back pieces at the shoulders and topstitch the seams to the back (fig. 7). Repeat for the lining.

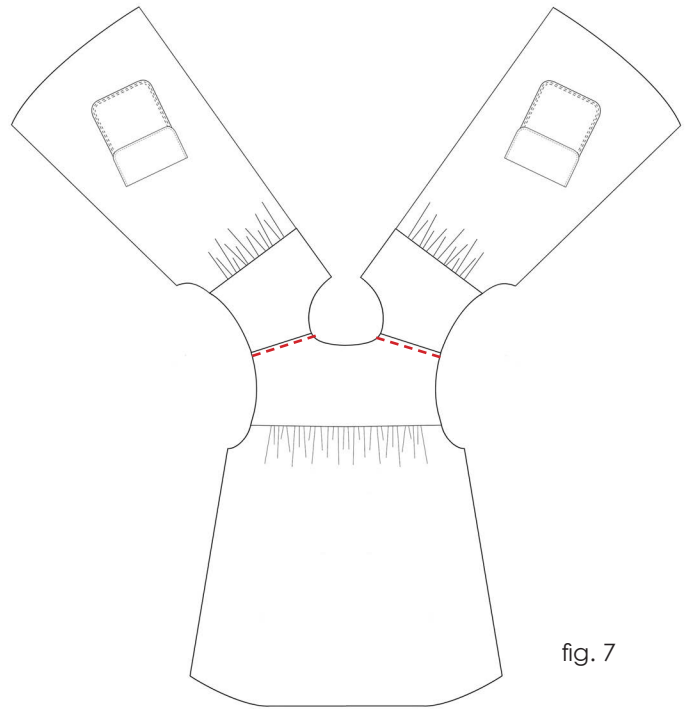


fig. 7

4. Attach a sleeve to the jacket, right sides together, adjusting gathers to fit the sleeve into the jacket. Topstitch the seam allowance to the bodice (fig. 8). Repeat for the other sleeve, then repeat with the linings.

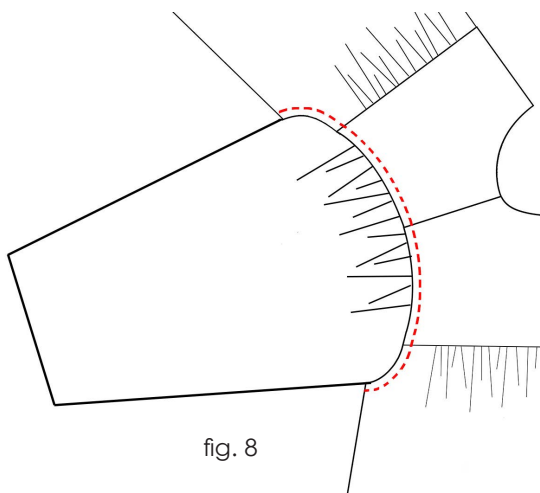


fig. 8

5. Fold the jacket inside out so that the side seams and sleeve seams line up with right sides together.
6. Starting at the cuff of the sleeve, with right sides together, sew up along the sleeve to the armpit (make sure all underarm seam match), then pivot and sew down to the hem of the jacket. (fig. 9). Clip a few notches at the pivot point, making sure you don't clip your seam. Repeat on the other side.

Now you have something that looks like a jacket! Repeat with the linings: now you have two jackets!

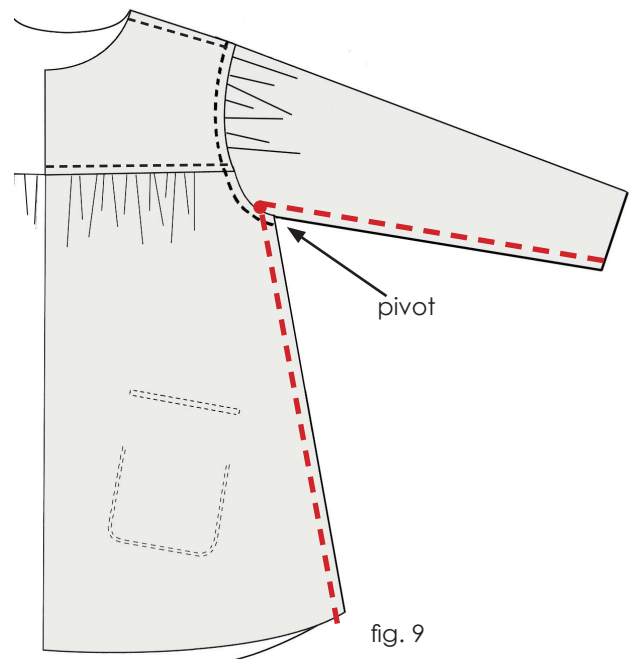


fig. 9

Assemble and Attach the Hood

1. Place the hood pieces right sides together, and sew along the long curved side (fig. 10). Repeat with the lining pieces.
2. With right sides together, match the bottom edge of the hood to the neckline of the jacket, and sew it on. Repeat with the lining pieces.
Now you really have 2 jackets!

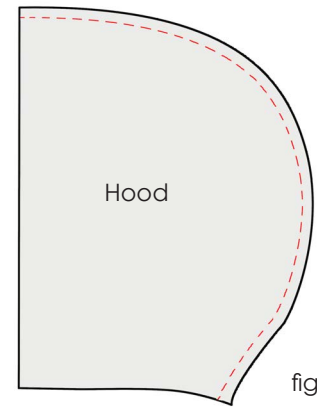


fig. 10

Sew the Lining into the Jacket

1. Fold the sleeve lining hem up 3/4" and press.
2. With right sides together, match all the raw edges and seams of the lining and outer jacket. Keep the sleeves out of the way, but use Clover Clips to attach the lining and the jacket all around the hood, down both sides of the front, and all around the hem until it looks like an inside out raincoat.
3. Starting near the center back, sew the lining and outer jacket together. Make sure the sleeves stay out of the way inside. Pivot at the bottom corner, go up the front, around the hood, back down the front, pivot to go back around the hem. Stop about 6-7" from your starting point. Clip your seam allowance at the bottom corners, then turn the whole jacket right side out through the gap.

4. Taking your time, finger press all along the seam you just sewed, making sure the edge is flat, including the gap. Edge-stitch all the way around, closing the gap and making sure the seams stay flat (fig. 11).

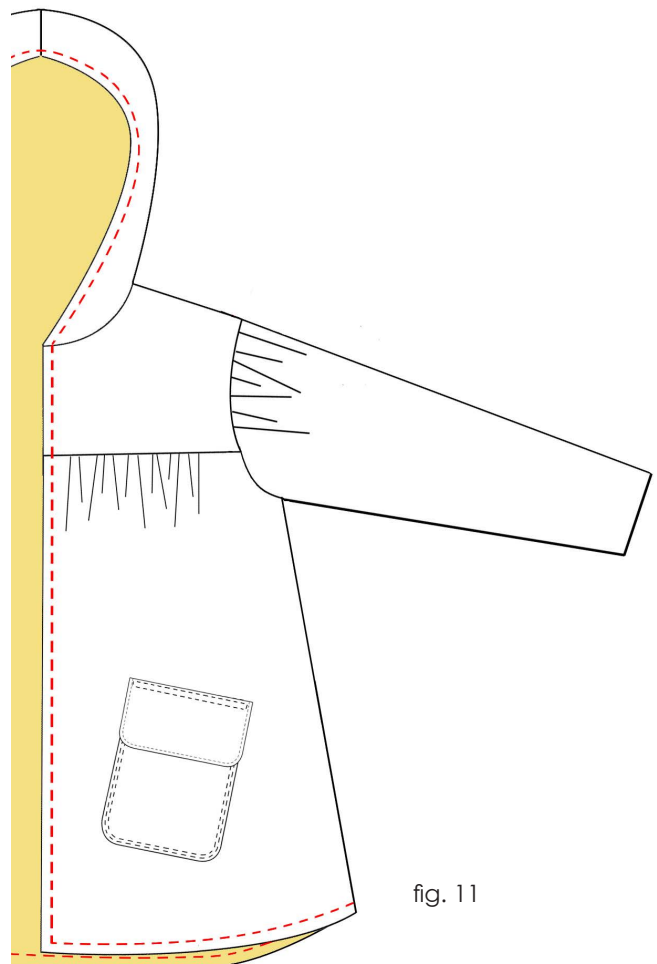


fig. 11

Hem Sleeves

1. With the sleeves inside out, fold the hem of the outer sleeve in, so it is just a bit longer than the lining hem. The raw edges will be sandwiched between the outer and the lining. Edge-stitch using the hem of the lining as a guide (fig. 12). Repeat on the other sleeve.

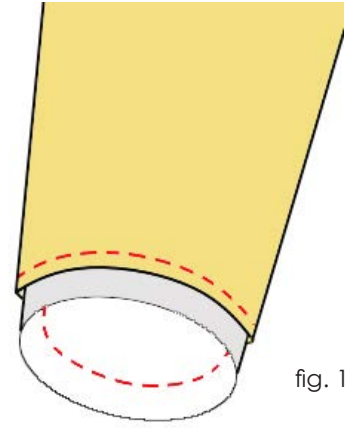
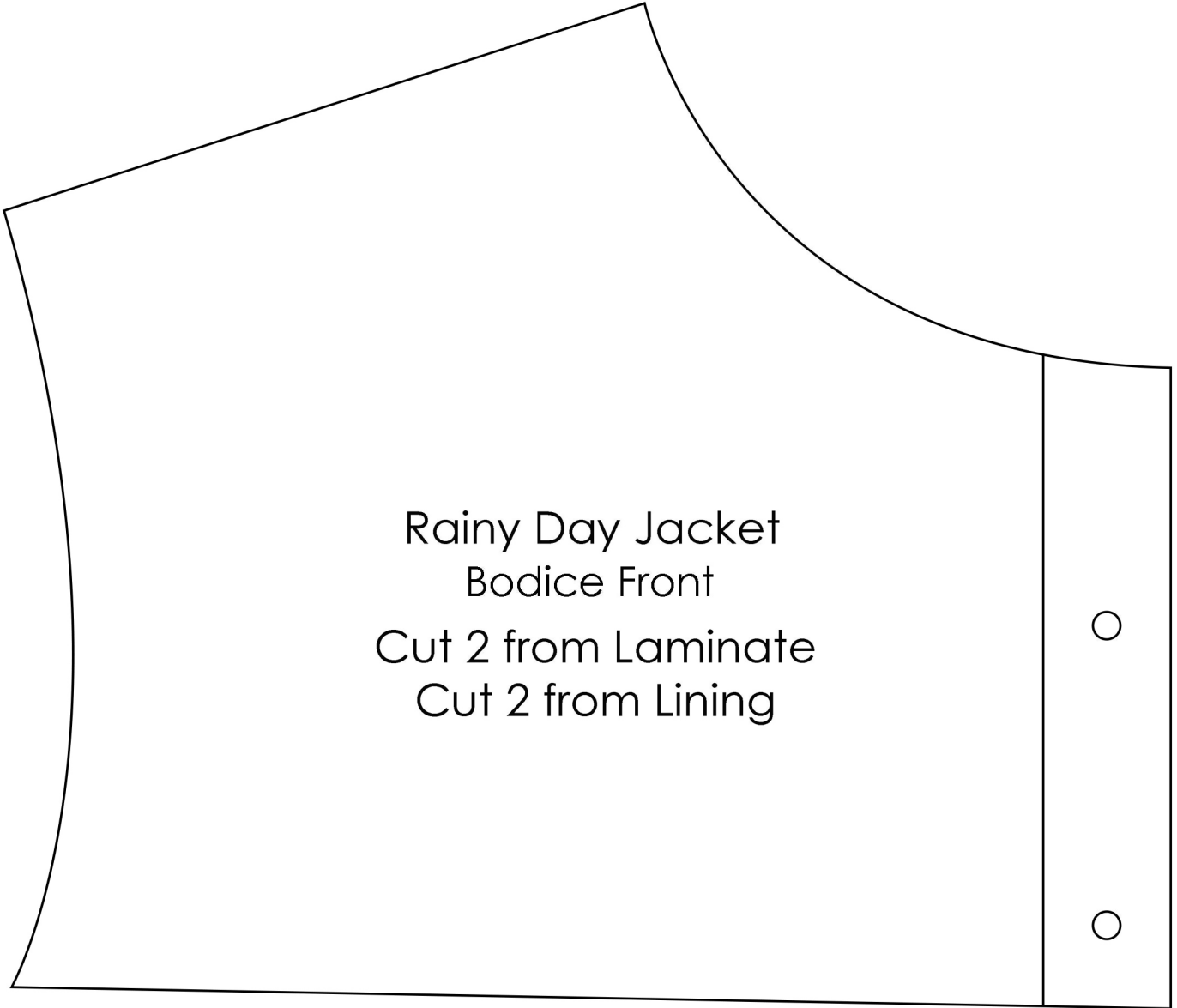
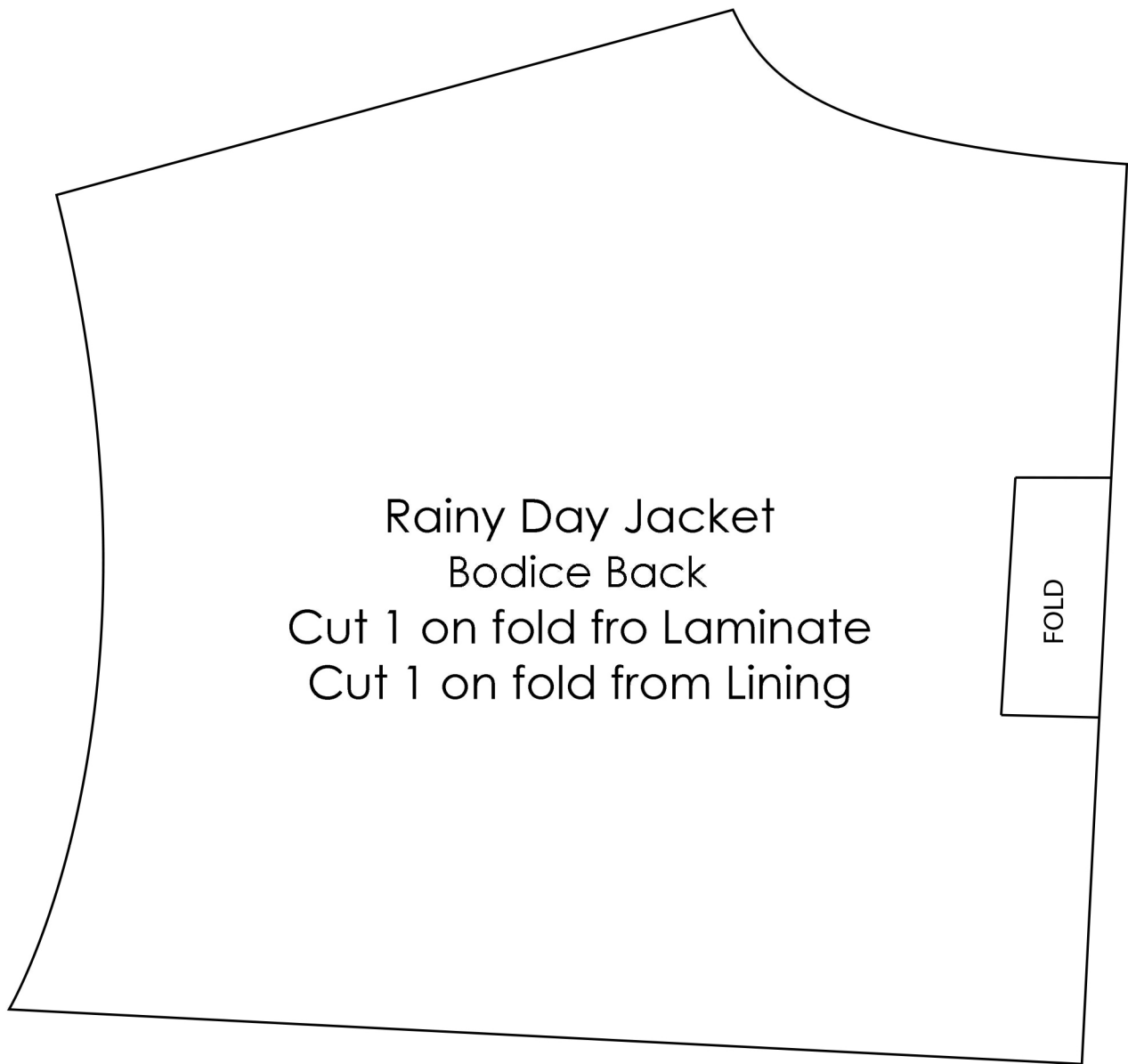


fig. 12

Finishing

1. Using the pattern piece as a guide, place snaps (or buttons, Velcro strips or your closure of choice) on the Bodice Front pieces. You can add snaps all the way down the front, or keep it simple and just do the two at the top. The Front pieces will overlap about 3/4" once snapped.

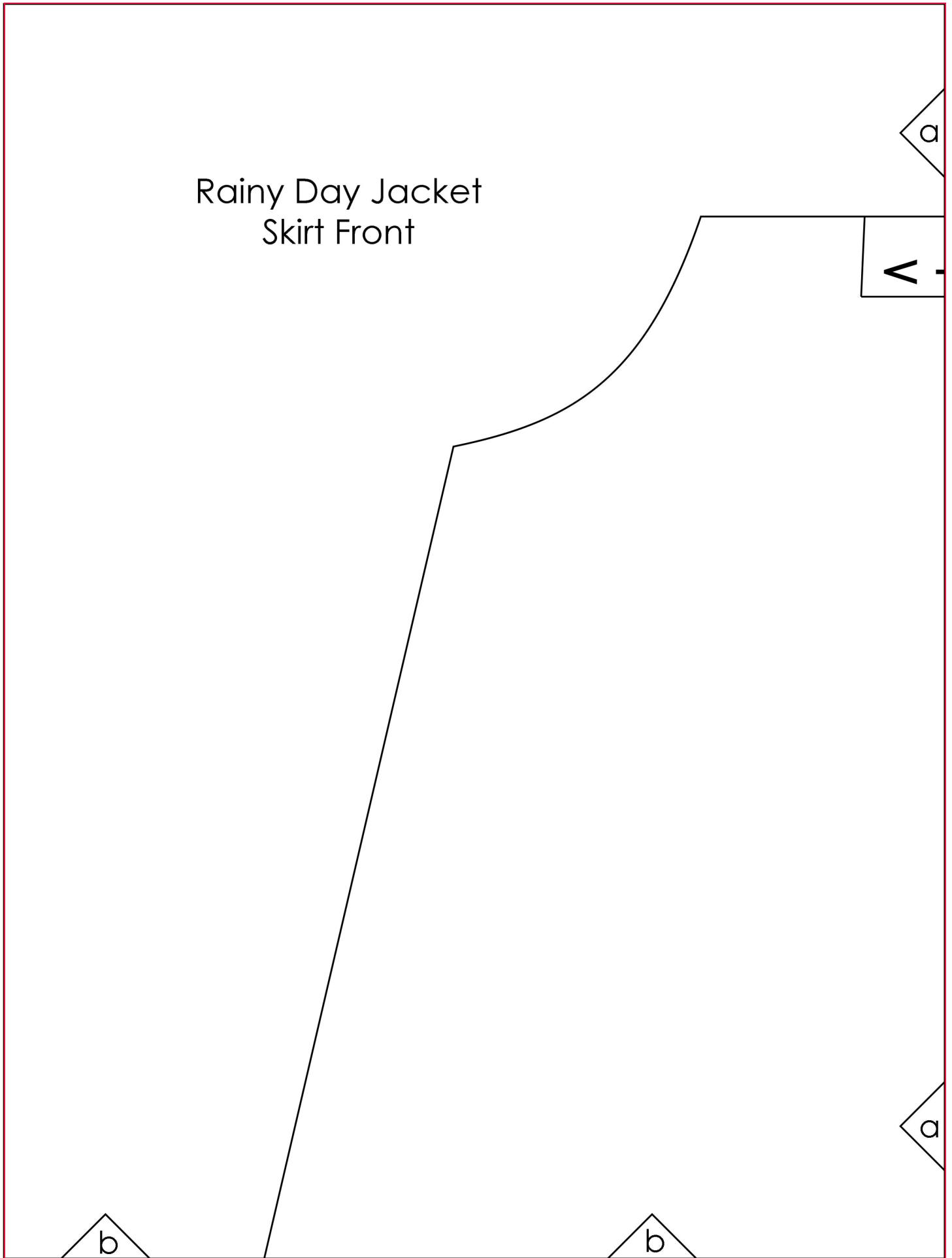




Rainy Day Jacket
Bodice Back
Cut 1 on fold fro Laminare
Cut 1 on fold from Lining

FOLD

Rainy Day Jacket
Skirt Front





Rainy Day Jacket
Skirt Front
Cut 2 from Laminate
Cut 2 from Lining



Pocket Placement Guide

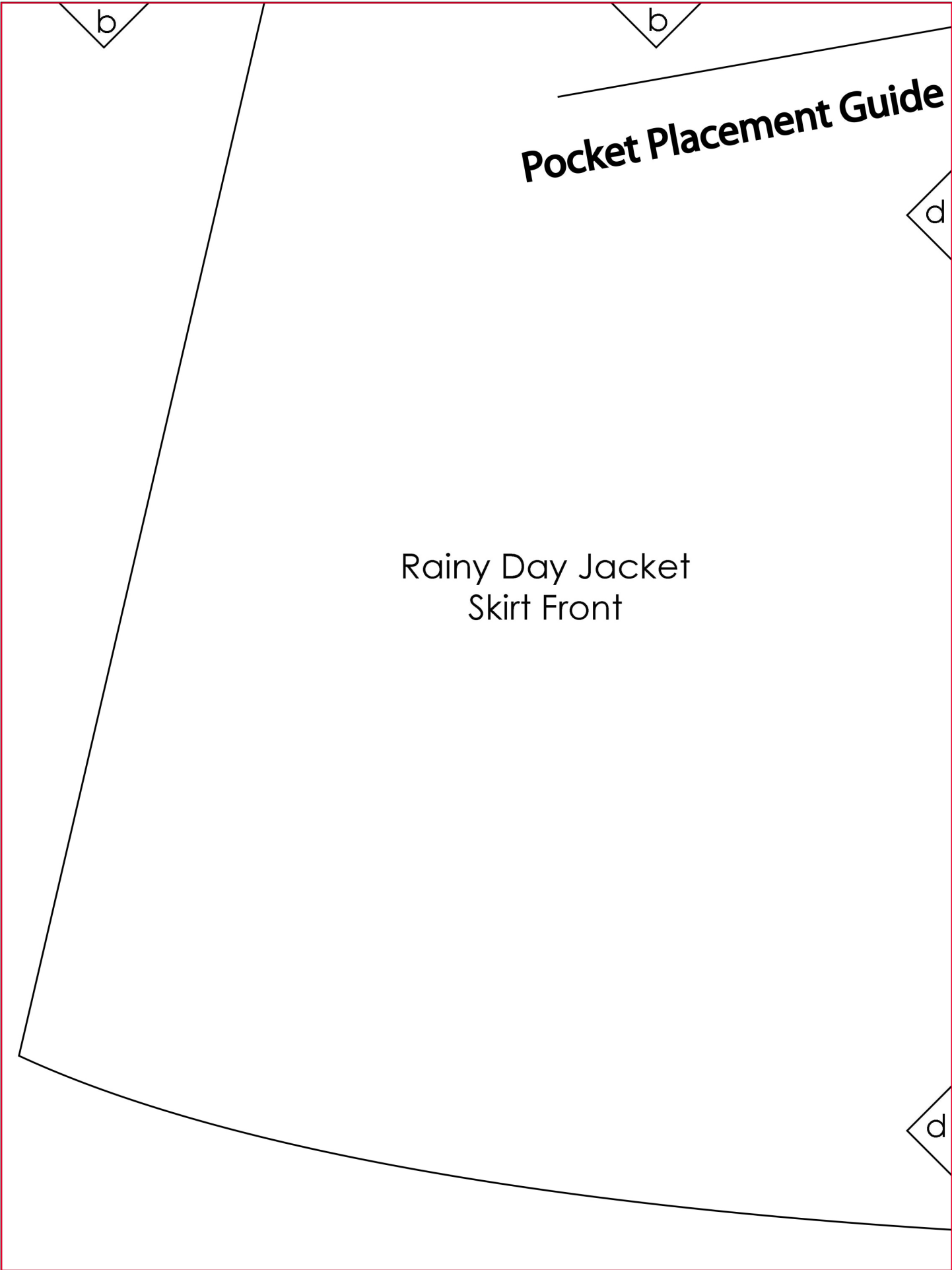
Rainy Day Jacket
Skirt Front

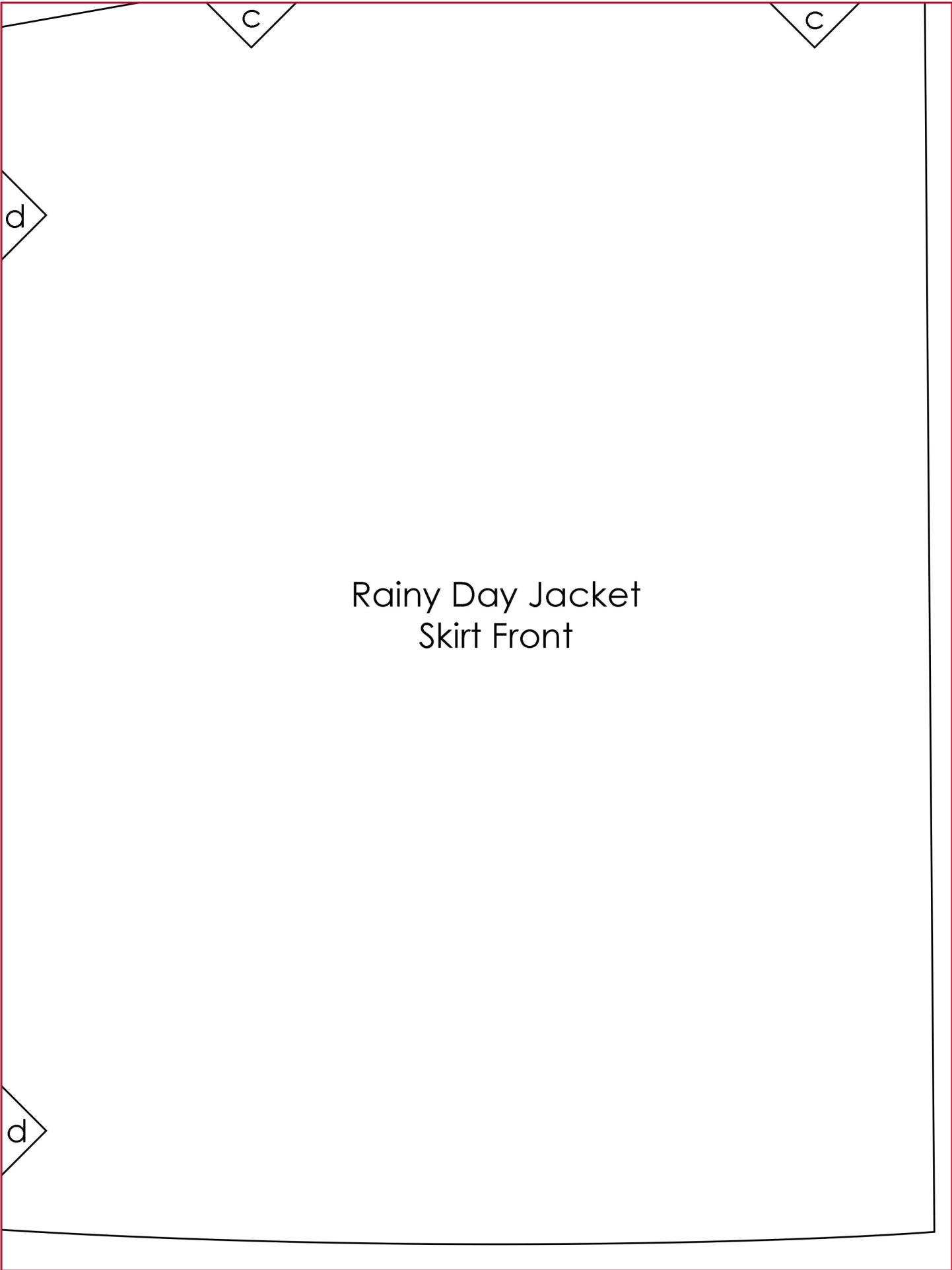
b

b

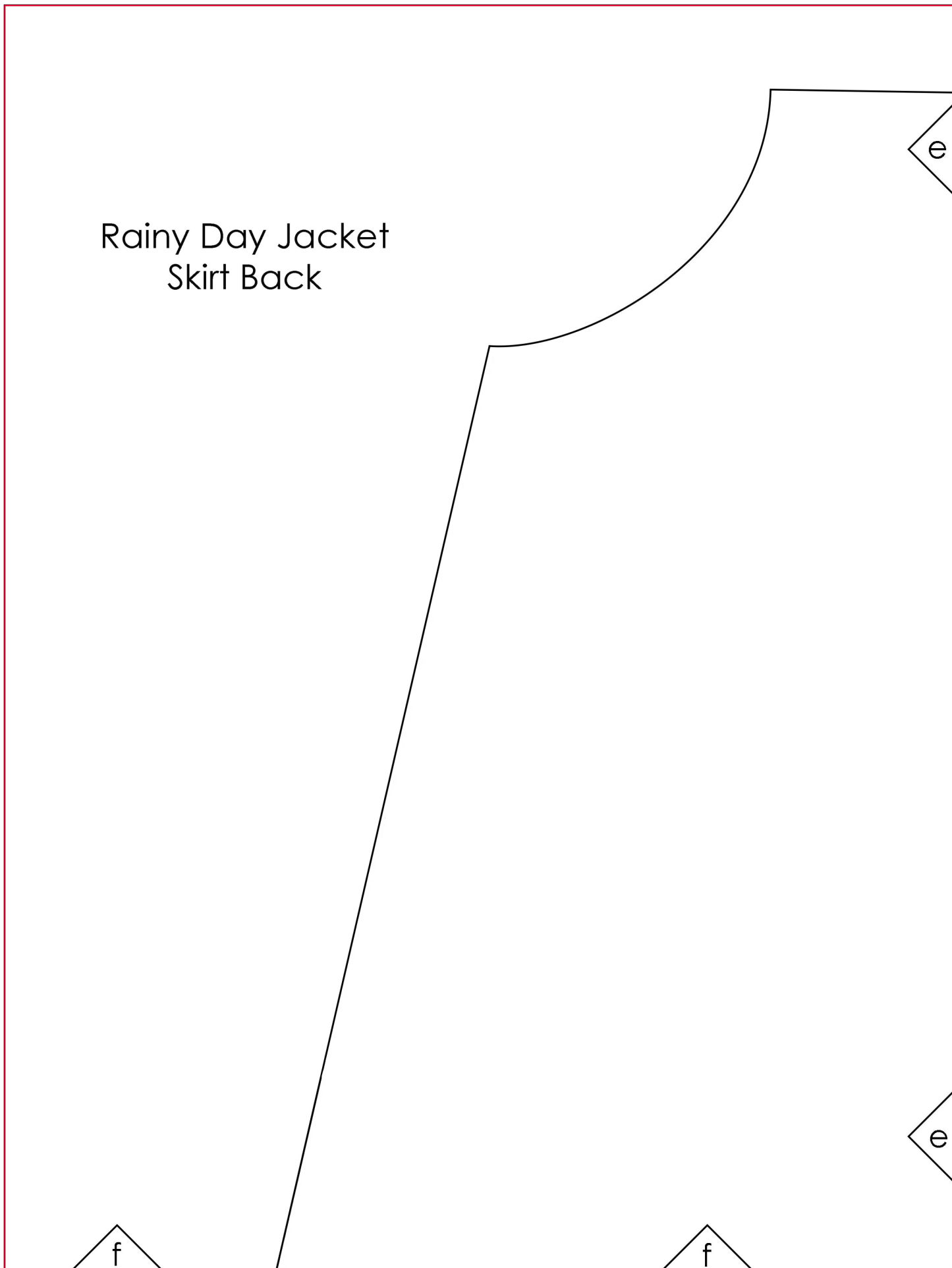
d

d





Rainy Day Jacket
Skirt Back



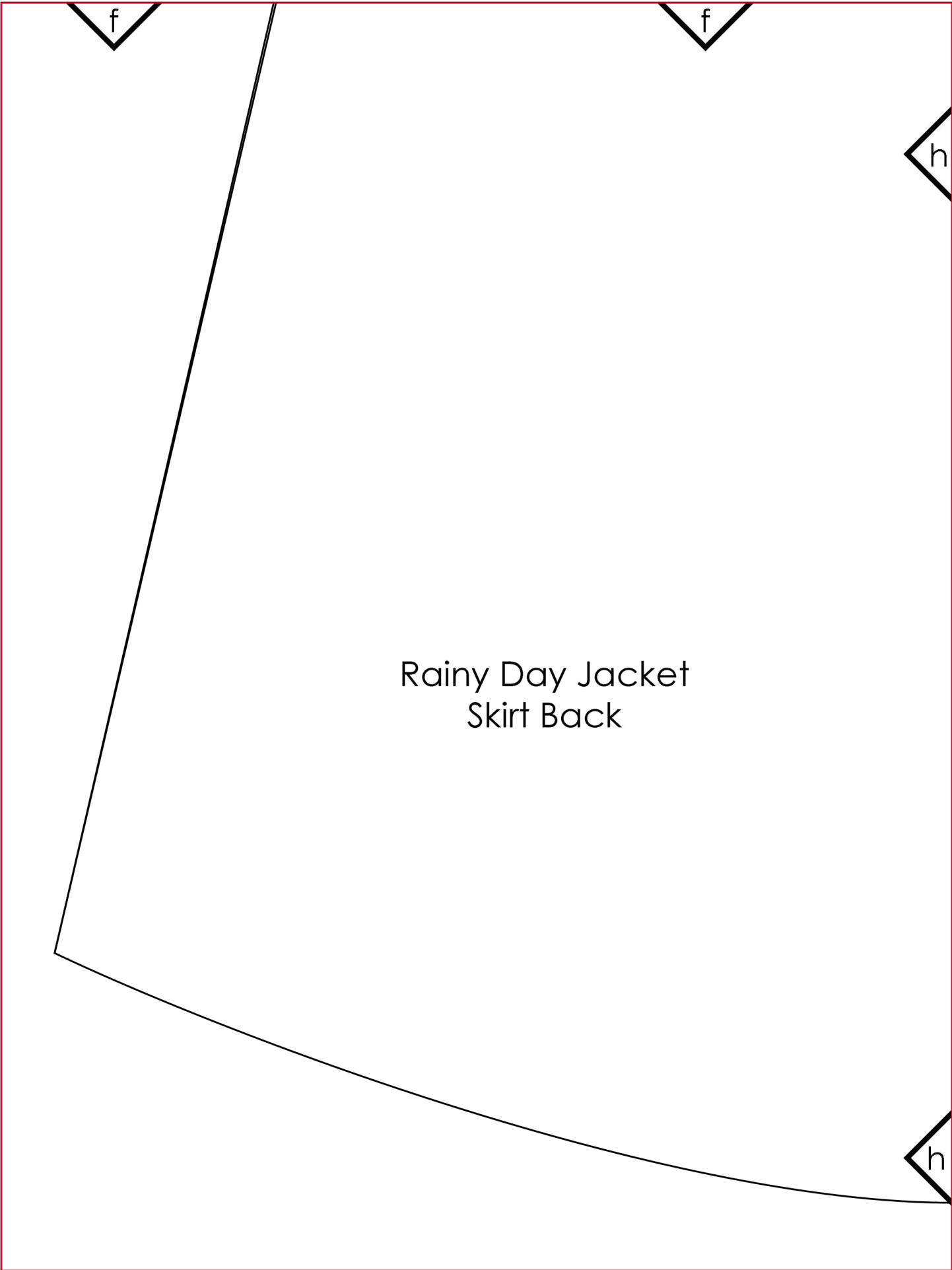


Gather from diamond -->

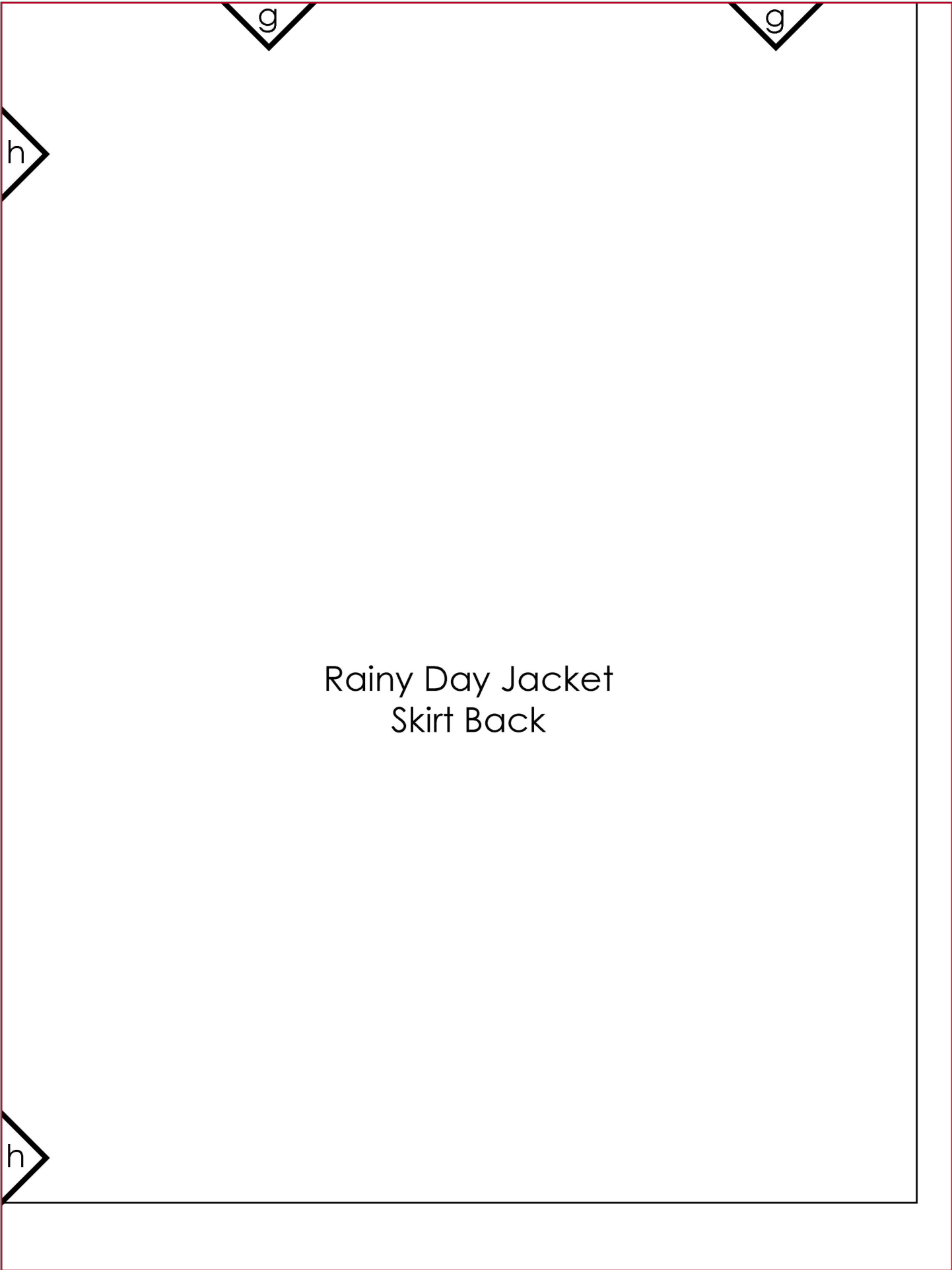
Rainy Day Jacket
Skirt Back
Cut 1 on Fold from Laminate
Cut 1 on fold from Lining

Cut on fold





Rainy Day Jacket
Skirt Back

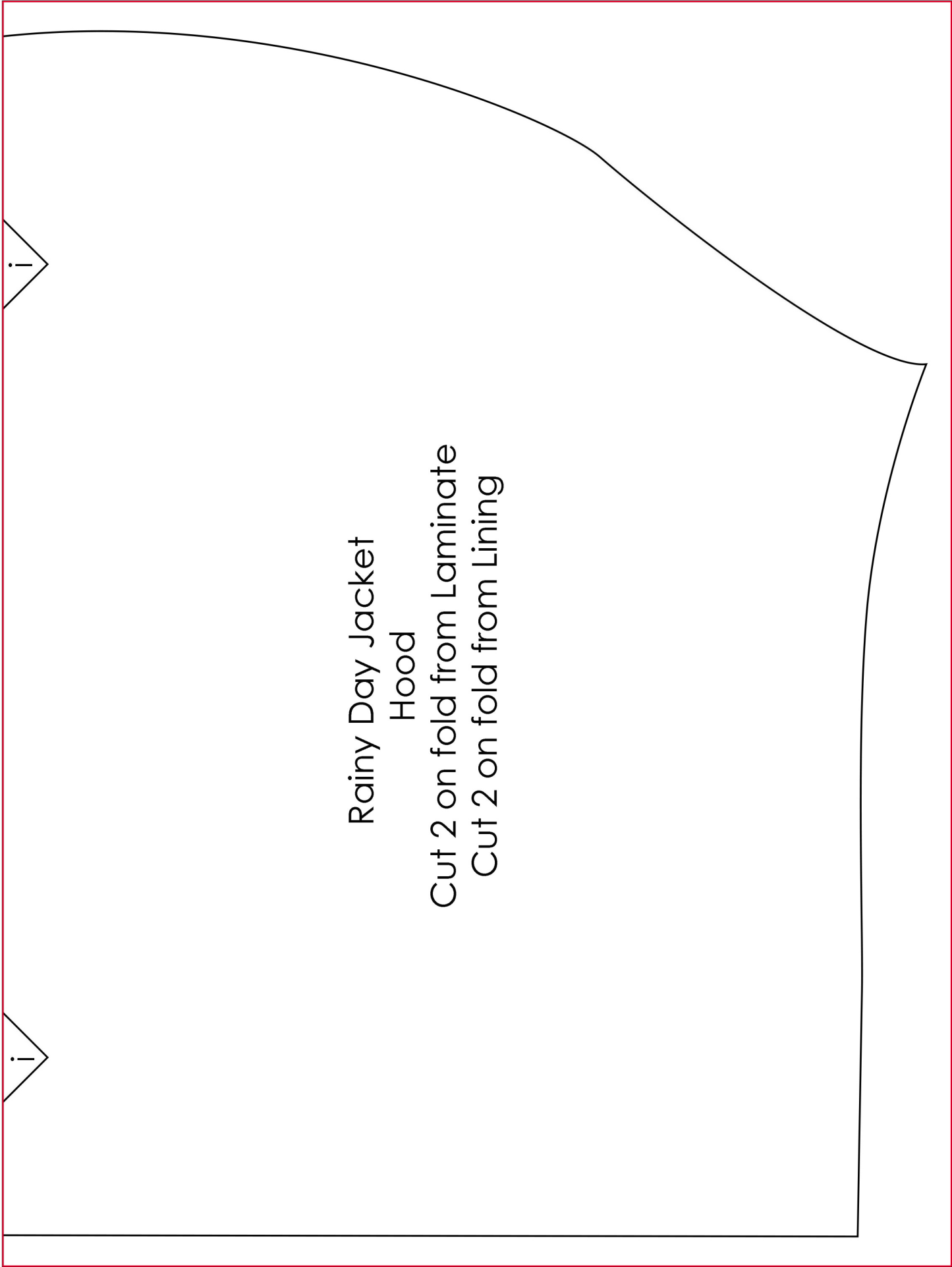


Rainy Day Jacket
Skirt Back

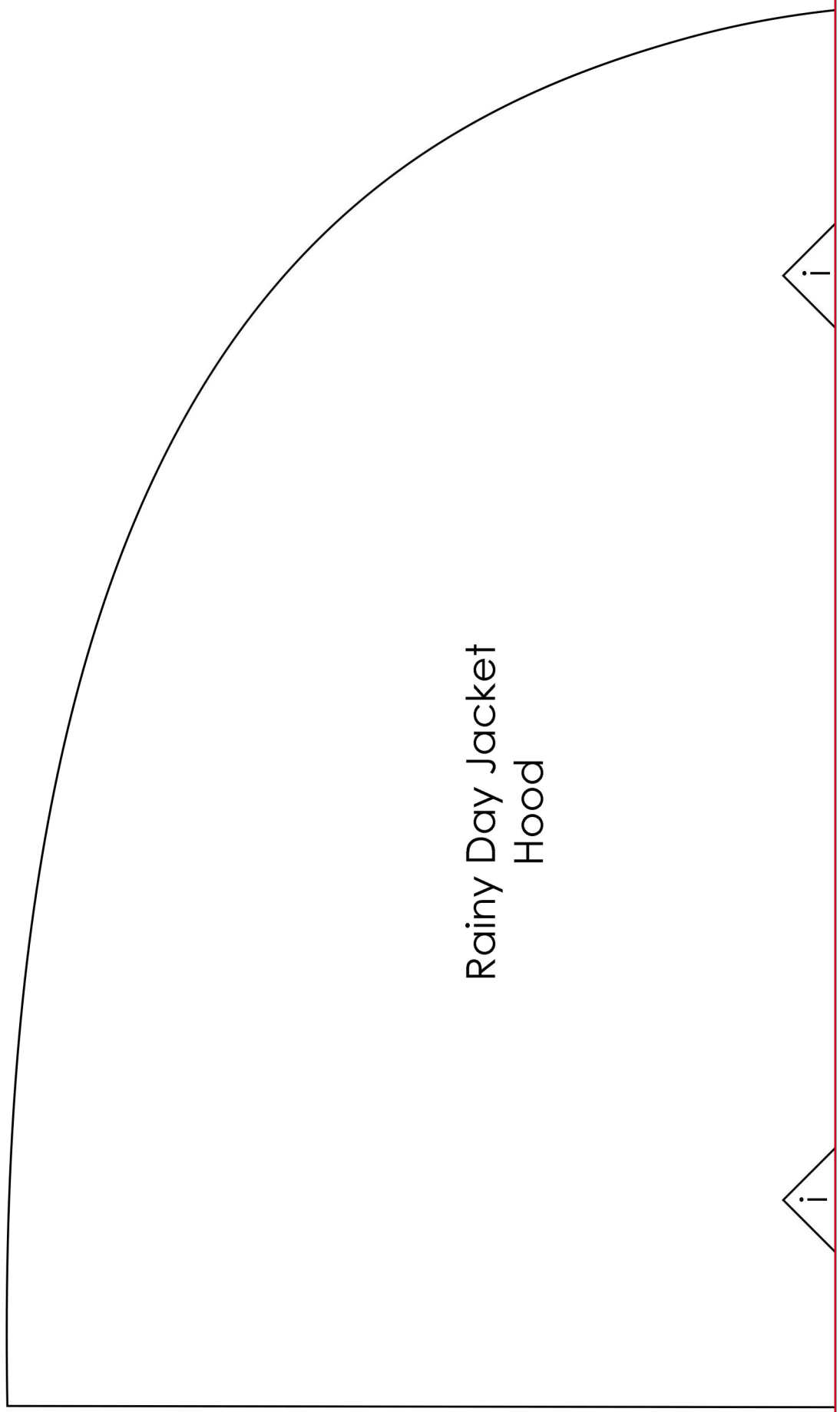
Rainy Day Jacket
Hood

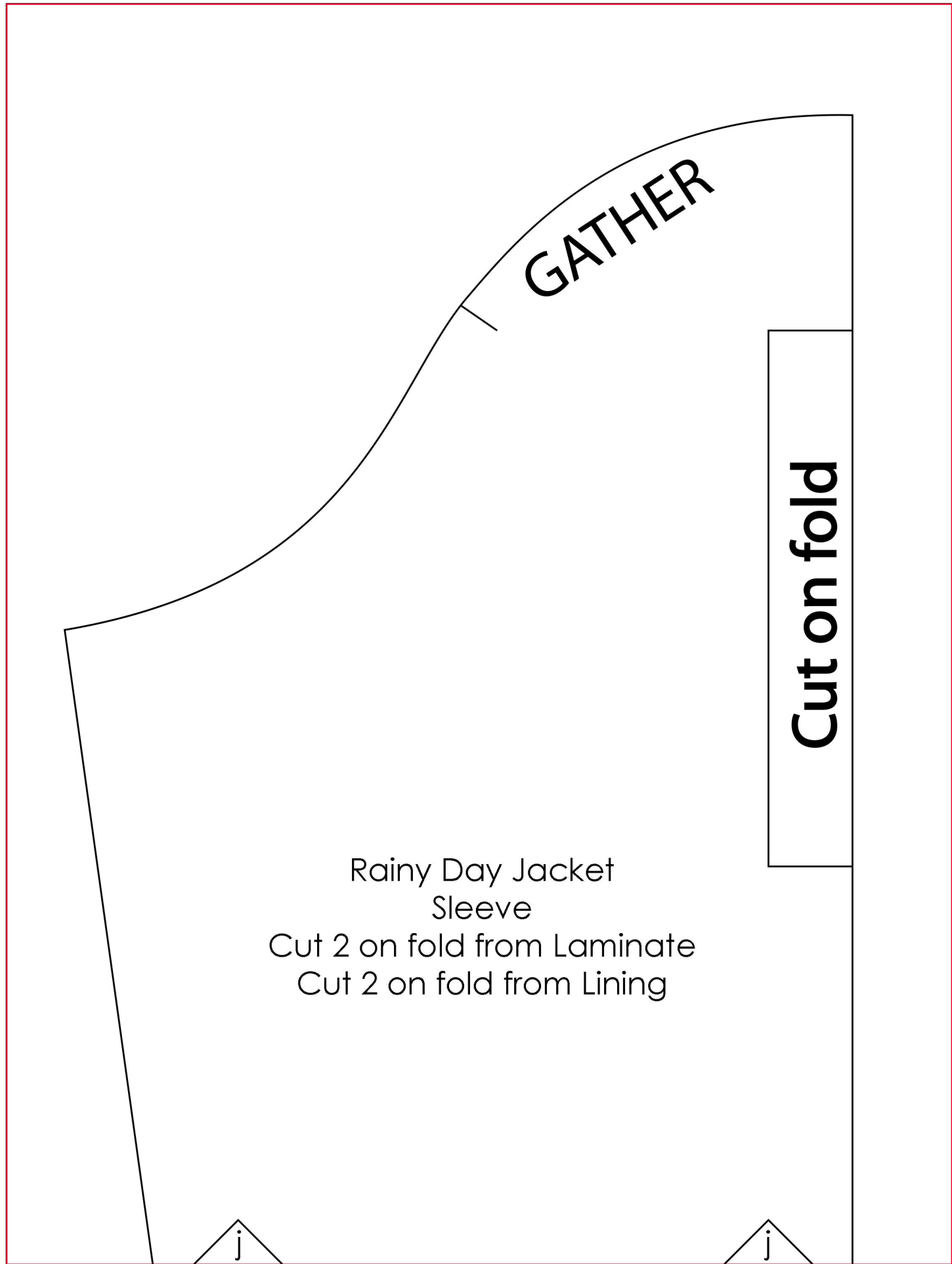
Cut 2 on fold from Lamininate

Cut 2 on fold from Lining



Rainy Day Jacket
Hood



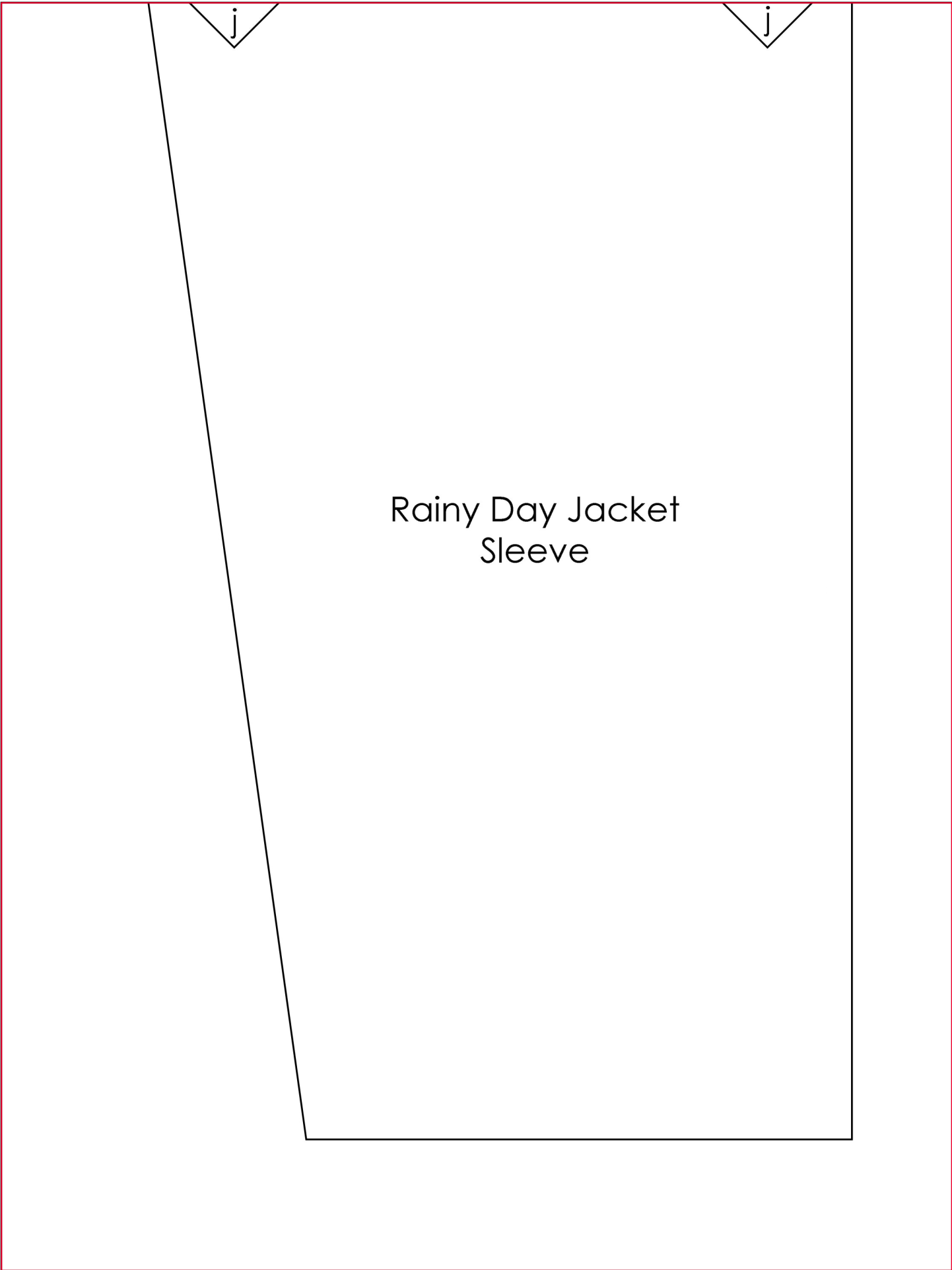


GATHER

Cut on fold

Rainy Day Jacket
Sleeve
Cut 2 on fold from Laminate
Cut 2 on fold from Lining





Rainy Day Jacket
Sleeve

Rainy Day Jacket
Pocket Flap
Cut 2 from Laminate
Cut 2 from Lining

Rainy Day Jacket
Pocket
Cut 2 from Laminate
Cut 2 from Lining