

WOOD CUTS

a collection by

Jennifer Sampson

Wood Cuts patterns used in this quilt:



AJS-3550-4 BLUE



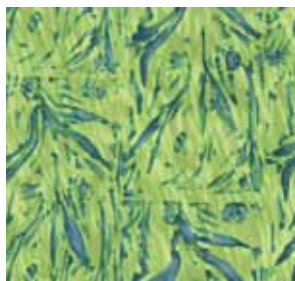
AJS-3552-2 BLUE



AJS-3552-10 BLACK



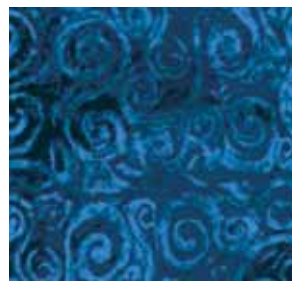
AJS-3553-1 CHESTNUT



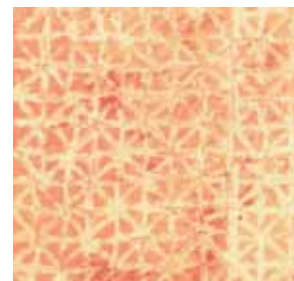
AJS-3557-1 GRASS



AJS-3556-10 GREY



AJS-3555-3 NAVY



AJS-3553-5 ORANGE



AJS-3555-7 PURPLE



AJS-3553-7 RED

All patterns are shown approx. 1/2 actual size.

ROBERT KAUFMAN
F A B R I C S

WOOD CUTS

Quilt designed by Heidi Pridemore

FINISHED QUILT SIZE: approx. 46" square

BLOCKS: 13 each 6½" finished size

FABRIC REQUIREMENTS:

| | | |
|-------------------------------|---------------------|------------|
| Block Backgrounds | AJS-3556-10 Grey | 5/8 yd. |
| Appliqué 1 and Outer Sashing | AJS-3557-1 Grass | 1/2 yd. |
| Appliqué 2 and Middle Sashing | AJS-3553-7 Red | 1/2 yd. |
| Appliqué 3 and Inner Sashing | AJS-3552-10 Black | 1/4 yd. |
| Appliqué 4 | AJS-3555-7 Purple | 1/4 yd. |
| Appliqué 5 | AJS-3552-2 Blue | 1/4 yd. |
| Appliqué 6 | AJS-3553-5 Orange | 1/4 yd. |
| Appliqué 7 | AJS-3553-1 Chestnut | 1/4 yd. |
| Inner Border | AJS-3555-3 Navy | 3/4 yd. |
| Corner Stones | | |
| Binding | | |
| Outer Border | AJS-3550-4 Blue | 1 3/8 yds. |
| Setting Squares | | |
| Paper-backed Fusible | | 2 yds. |

CUTTING:

| |
|---------------------------------------------|
| (14) 7" squares |
| (1) 8" square for appliqué and (20) 2" x 7" |
| (1) 8" square for appliqué and (12) 2" x 7" |
| (1) 8" square for appliqué and (4) 2" x 7" |
| (1) 8" square for appliqué |
| (1) 8" square for appliqué |
| (1) 8" square for appliqué |
| (1) 8" square for appliqué |
| (2) 2½" x 34½" and (2) 2½" x 38½" |
| (24) 2" squares |
| (5) 2¼" x width of fabric |
| (2) 4½" x 38½", (2) 4½" x 46½" |
| (12) 7" squares |
| (7) 8" squares |

ASSEMBLY:

1. Enlarge and trace the pattern onto the paper side of the seven 8" squares of fusible. Also transfer the outlines for A and B shapes.
2. Apply a fusible square with the tracing to the wrong side of each 8" appliqué fabric square, following the fusible manufacturer's instructions.
3. Carefully cut on all of the traced lines represented in Figure 1 as dotted lines. **Do not cut through the surrounding areas. You will need both the positive and the negative shapes to make the blocks.** Fold the fabric to start cutting on a drawn line. Separate the A shapes from the B shapes.
4. Arrange the A cutouts onto seven 7" gray background squares to make negative blocks. Mix up the colors as shown in the photo. Fuse the shapes in place. These are Blocks A.
5. Now arrange the B cutouts onto seven 7" gray background squares to make positive blocks. Be sure to allow for 1/4" seams on the edges. Fuse the shapes in place. These are Blocks B.
6. Buttonhole or satin stitch around the raw edges of each shape including the outer edge of the large square A.
7. Following the quilt diagram below, sew the quilt top together. You will have one extra Block B. Refer to the trimming lines to square up the top to create the setting triangles.
8. Add the inner and outer borders. Layer, quilt and bind as desired.

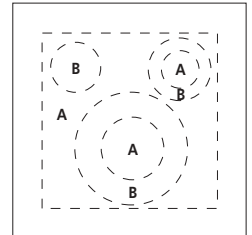
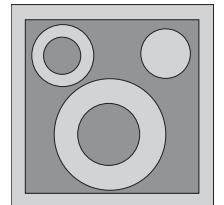
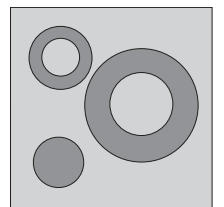


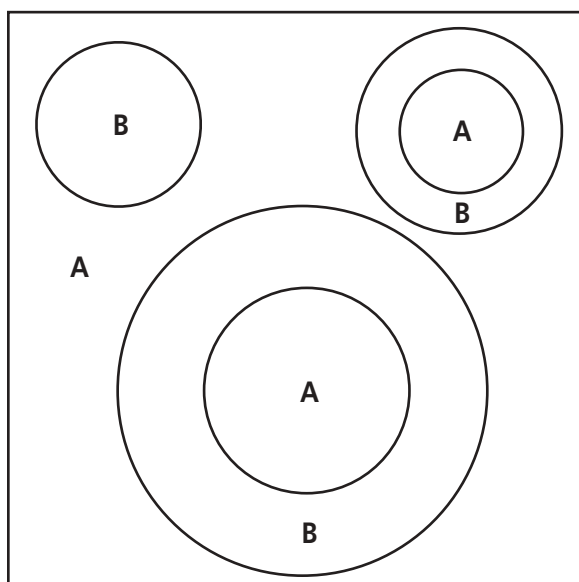
FIGURE 1



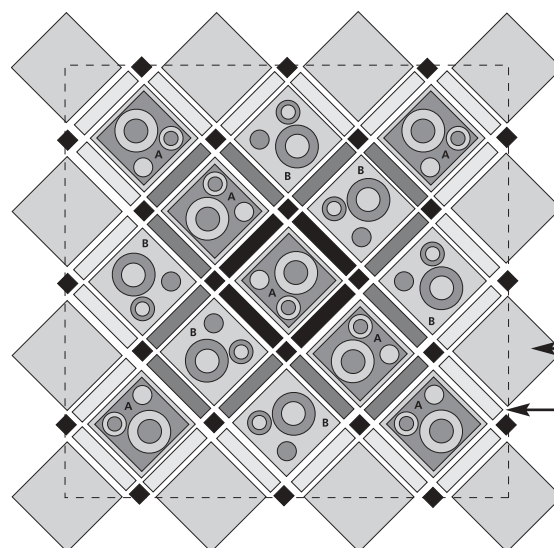
BLOCK A



BLOCK B



PATTERN TEMPLATE—ENLARGE 200%



QUILT DIAGRAM

SETTING SQUARES

TRIM 1/4" OUTSIDE POINTS OF OUTER SASHING