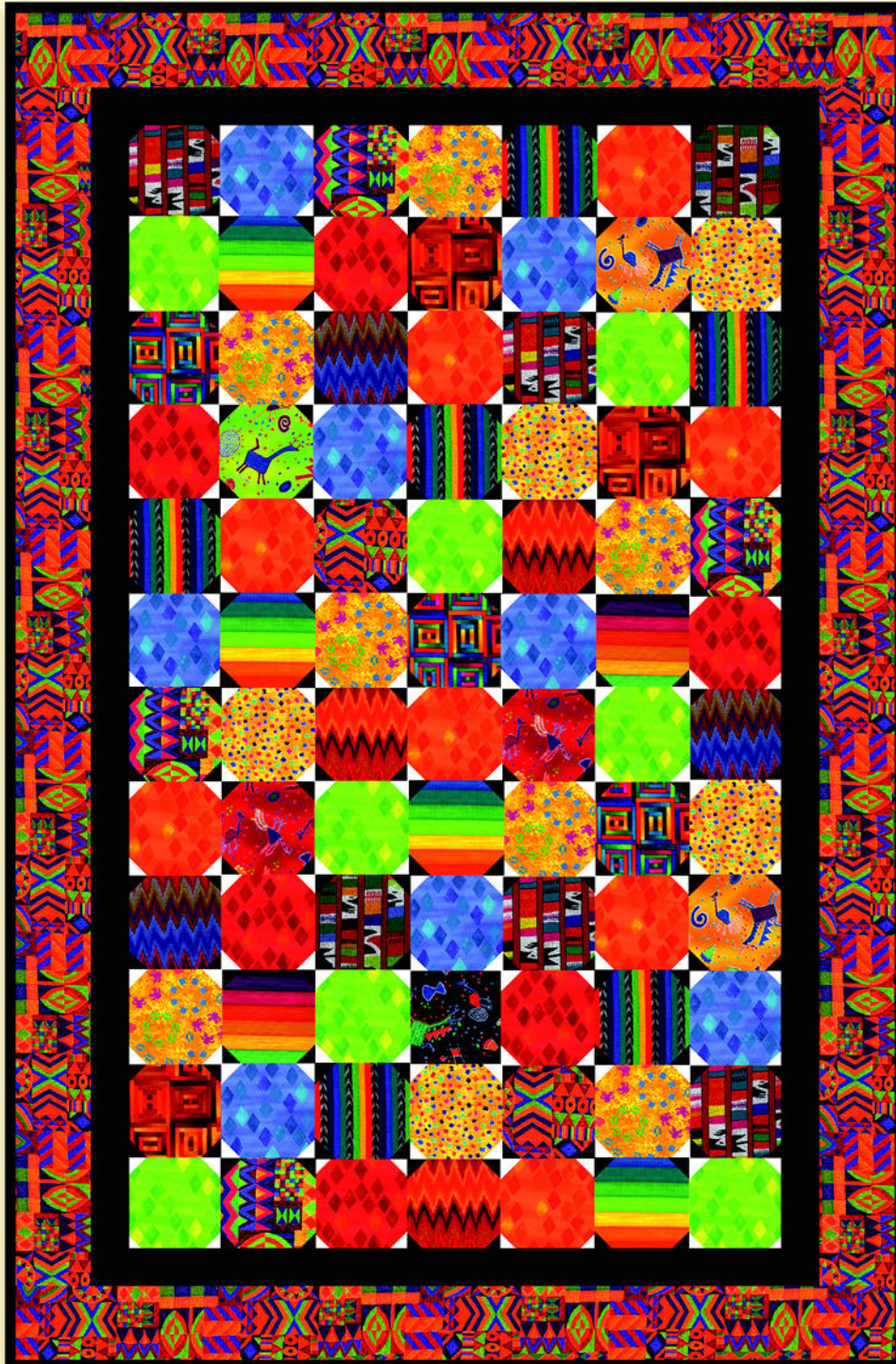
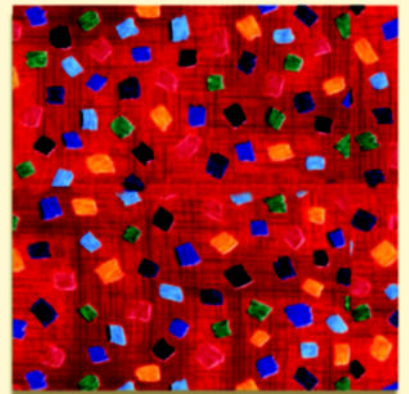
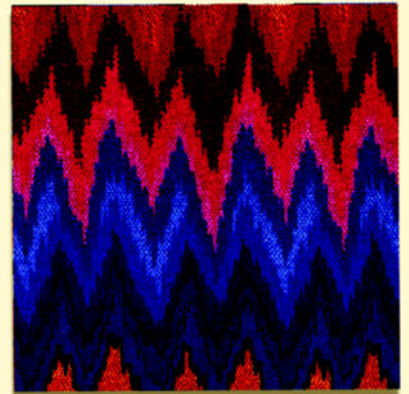


# “Colors of San Antonio” lap quilt

featuring

## THE GUATEMALAN RAINBOW COLLECTION

by Priscilla Bianchi



ROBERT KAUFMAN  
F A B R I C S

# Colors of San Antonio

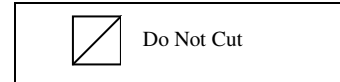
By: Priscilla Bianchi  
 Quilt: 43 1/2" x 66"  
 Finished Block 4 1/2"

All Seams are 1/4"

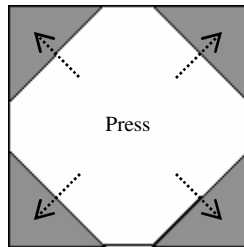
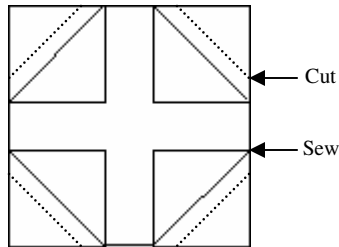
All strips are cut the width of the fabric (carefully trim all selvages)

Fabric	Yardage Requirements	Cutting Directions
12 – 14 <i>Guatemalan Rainbow Collection Fabrics</i> of your choice	1/4 yard of each fabric plus an additional 7/8 yard of one of the fabrics for 2nd border	Cut 1 strip 5" wide from each of the fabrics. Cut each strip into 8 squares 5" x 5". The quilt uses 84 squares. There are more squares than needed to allow a choice in the layout. Cut 6 strips 4 1/2" wide for the 2nd border.
Kona Cotton White (block corner square)	3/8 Yard	Cut 7 strips 1 1/2" wide. Cut into 168 squares 1 1/2" x 1 1/2".
Kona Cotton Black (block corner square)	7/8 Yard	Cut 7 strips 1 1/2" wide. Cut into 168 squares 1 1/2" x 1 1/2". Cut 6 strips 2 1/2" wide for the first border.
Binding (your choice)	1/2 yard	Cut 6 strips 2 1/4" wide.

## Block Construction



1. Draw a diagonal line on the reverse side of the 1 1/2" black and white squares.
2. Place 4 squares (same color) on the four corners of one of the 5" squares. Sew on the drawn line. Cut 1/4" away from the sewing line and press as illustrated.



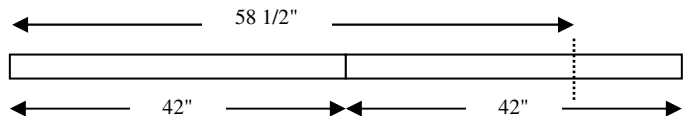
**Tip:** After cutting 5" squares separate into 2 groups.  
**Group 1 (calm)** Small to medium prints, tone on tone, geometric, etc. These squares will have white corners  
**Group 2 (busy)** Medium to large patterns, theme prints, wide stripes, etc. These squares will have black corners.  
 Separating fabric squares allows for a balanced arrangement.

3. Make 42 blocks with black corner squares and 42 with white corner squares.

## Quilt Assembly

1. Using color photo, layout blocks to construct quilt top. There will be 12 rows of 7 blocks each.
2. Borders (measure quilt body – if your measurements are different, cut to your measurements)

**1st Border** Cut two of the 2 1/2" wide strips down to measure 2 1/2" x 32". Sew to the top and bottom of the quilt. Sew two of the 2 1/2" wide strips together end to end. Repeat to make two sets. Cut down to measure 58 1/2" long. Sew to the sides of the quilt.



**2nd Border** Cut two of the 4 1/2" wide strips down to measure 4 1/2" x 36". Sew to the top and bottom of the quilt. Sew two 4 1/2" wide strips end to end. Repeat to make 2 sets. Cut each set down to measure 66 1/2" long. Sew to the sides of the quilt.

3. Layer, quilt and bind as desired.