

# Jennifer Sampou

## Nature Collection Leaves

Quilt and Pattern  
by Diana McClun  
and Lauran Nownes



AJS-5733-191 AUTUMN



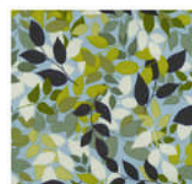
AJS-5733-44 FOREST



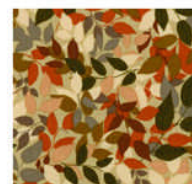
AJS-5732-44 FOREST



AJS-5732-191 AUTUMN

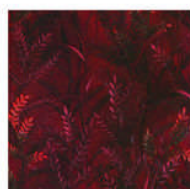


AJS-5734-12 GREY



AJS-5734-16 BROWN

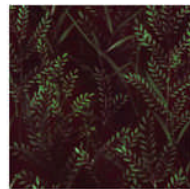
42"x42"



AJS-5191-10 CARNELIAN



AJS-5191-12 PERIDOT



AJS-5191-25 JASPER



AJS-5191-9 RUBY



AJS-5191-14  
MOONSTONE



AJS-5734-8 ORANGE

www.robertkaufman.com  
**ROBERTKAUFMAN**  
F A B R I C S



EDD-2459-9 BARK



EDD-2459-62 BUTTER



EDD-2459-27 COCOA



EDD-2459-11 GOLD



## Nature Collection Leaves by Jennifer Sampou

42" x 42"

Designed and made by Diana McClun and Laura Nownes

Machine Quilted by Victoria Simpson

This quilt can be constructed using hand or machine appliqué techniques

FABRIC		CUTTING:	7-1/2" squares	8" squares
<u>Nature Collection/Leaves</u>				
AJS-5732-191	Autumn	1/2	4	2
AJS-5732-44	Forest	1/2	4	3
AJS 5733-44	Forest	1/4	--	4
AJS 5733-191	Autumn	1/4	--	3
AJS 5734-8	Orange	1/2	4	2
AJS 5734-12	Grey	1/2	4	3
AJS 5734-16	Brown	1/2	4	2
<u>Designer Essentials Jewel</u>				
AJS 5191-9	Ruby	1/4	2	2
AJS 5191-10	Carnelian	1/4	2	2
AJS 5191-12	Peridot	1/2	4	3
AJS 5191-14	Moonstone	1/4	1	3
AJS 5191-25	Jasper	1/2	3	4
<u>Kona Multi-Dye</u>				
EDD-2459-9	Bark	1/2	4	2
EDD-2459-11	Gold	1/4	--	2
EDD-2459-27	Cocoa	1/4	--	2
EDD-2459-62	Butter	1/4	--	2

Backing: AJS-5734-12 Grey 1-3/8 yds

Binding (1/4"): AJS-5191-14 Moonstone 3/8 yd

Also needed: One manila file folder, compass, pencil, fine line permanent pen and spray starch.

Optional: 1-1/4 yard of white flannel for design wall

### PREPARATION

1. Use the compass and ruler to mark a circle with a 7-1/2" diameter onto the manila file folder. Next, use paper scissors to accurately cut around the marked circle. **(SEE DIAGRAM 1)**
2. Center the cardboard circle template onto the wrong side of the 8" squares. Use the fine-line permanent pen to mark around the circle.
3. Use fabric scissors to accurately cut around the outline of the circle. Multiple layers can be pinned and cut.
4. With the wrong side facing up, place a fabric circle onto the pressing board. Center the cardboard template onto the fabric circle.
5. Apply spray starch along the 1/4" extension, then press over the edge of the cardboard template. Allow the fabric to cool to set the curve. Continue spraying and pressing over the cardboard template around the entire edge of the fabric circle. The 1/4" extension should be flat and the folded edge should have a sharp curve.
6. Let the fabric cool before carefully removing the cardboard circle template.
7. Cut one-half of the circle template pattern from a plain piece of paper. Tape this half-circle to the back-side of the cutting ruler, aligning the straight edge with the edge of the ruler.
8. To accurately cut quarter circles from the prepared circle fabrics, position the ruler over the fabric, aligning the curved edges with those of the taped paper pattern. **(SEE DIAGRAM 2)**
9. Cut the fabric circle into quarters, use the paper pattern as a guide for placement.
10. Position the 7-1/2" background squares onto the flannel design wall, referring to the photo for help with color placement.
11. Position the quarter circles onto the background squares, referring to the photo for help with color placement.

### CONSTRUCTION

1. Working on one block at a time, stitch the fabric quarter circles to the background squares either by hand using a small appliqué stitch or by machine with a blanket stitch along the curved edges.
- Note: the background fabric behind the circles can be cut to within 1/4" of the hand or machine stitches, if desired.

### ASSEMBLY

1. Sew the blocks together in rows, then sew the rows together, alternating the pressing direction of the seams at the intersections.
2. Layer and baste the quilt top, batting and backing in preparation for quilting.
3. Quilt and then attach the binding to complete the quilt.

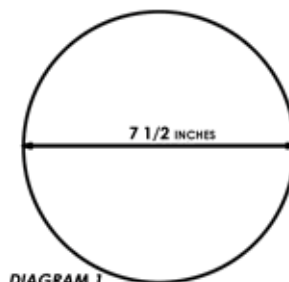


DIAGRAM 1

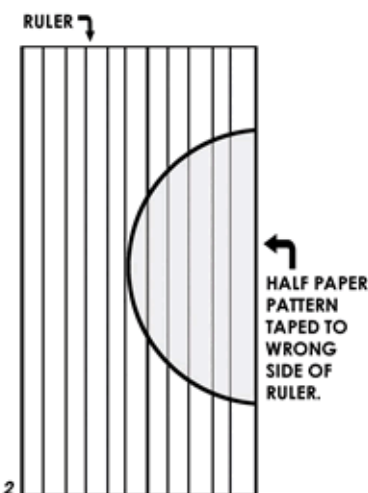
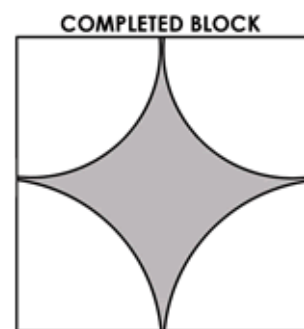


DIAGRAM 2



COMPLETED BLOCK