

Joie de Vivre

by Luana Rubin

Quilt design by:
Heidi Pridemore

Quilt size: 48" square



ALRM-5986-15 IVORY



ALR-5983-104 PRIMROSE



ALR-5984-97 ROSE



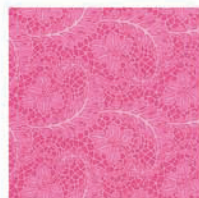
ALR-5985-10 PINK



ALRM-5989-10 PINK



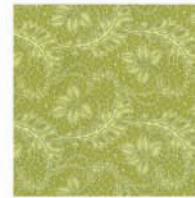
Fifty cents per yard of the wholesale cost of this product goes to The Breast Cancer Research Foundation, dedicated to preventing breast cancer and finding a cure in our lifetime by funding clinical and genetic research worldwide. For more information, visit bcrcure.org or call toll-free 1.866.FIND.A.CURE.



ALR-5987-10 PINK



ALR-5987-15 IVORY



ALR-5987-36 ALOE



ALRM-5989-14 NATURAL

for more quilt patterns visit our website
ROBERTKAUFMAN
F A B R I C S
www.robertkaufman.com

JOIE DE VIVRE

Quilt designed Heidi Pridemore

48" square

Fabrics Needed:

Outer Border	ALRM-5986-15	1-1/4 yards
Inner Border & Binding	ALR-5987-36	1 yard
Pinwheel A	ALRM-5989-10	1/3 yard
Pinwheel B	ALR-5984-97	1/3 yard
Pinwheel Backgrounds	ALR-5987-15	1 yard
Pinwheel C	ALR-5985-10	1/3 yard
Pinwheel D	ALR-5987-10	1/3 yard
Center Square	ALR-5983-104	Fat Quarter
Center Corners	ALRM-5989-14	1/3 yard
Backing	ALRM-5989-14	3 yards

Cut:

Cut two 6-1/2" x 36-1/2" strips. Cut three 6-1/2" x width of fabric (WOF) strips. Piece them together into two 6-1/2" x 48-1/2" strips. Cut two 2-1/2" x 32-1/2" strips and two 2-1/2" x 36-1/2" strips. Cut five 2-1/4" x WOF strips. Piece them together for the binding. Cut twelve 2-7/8" squares and twenty-four 2-1/2" squares. Cut twelve 2-7/8" squares and twenty-four 2-1/2" squares. Cut forty-eight 2-1/2" squares and forty-eight 2-1/2" x 4-1/2". Cut twelve 2-7/8" squares and twenty-four 2-1/2" squares. Cut twelve 2-7/8" squares and twenty-four 2-1/2" squares. Cut one 16-1/2" squares. Cut four 8-1/2" squares. Piece into one 56" square.

Block Assembly Instructions:

- Place one 8-1/2" Center Corner square on one corner of the 16-1/2" Center square, right sides together (fig. 1). Sew across the diagonal of the smaller square (fig.1). Flip open the triangle formed and press. Trim the excess fabric away from the back leaving 1/4" seam allowance.
- Repeat Step one with three more 8-1/2" Center Corner squares and the remaining three corners (Fig. 2) to make the Center Block.
- Place one 2-7/8" Pinwheel A square on top of one 2-7/8" Pinwheel B Square, right sides together. Draw a diagonal line through the center of the top block (Fig. 3).
- Sew 1/4" away from the drawn diagonal line on each side (Fig. 4).
- Cut the squares across the drawn diagonal line to make two half-square triangles (Fig. 5).
- Repeat Steps 3-5 with eleven more 2-7/8" Pinwheel A squares and eleven 2-7/8" Pinwheel B squares to make twenty-four A/B half-square triangles total.
- Place one 2-1/2" Pinwheel A square on top of the left side of one 2-1/2" x 4-1/2" Background strip, right sides together (fig. 6). Sew across the diagonal of the square (fig. 6). Flip open the triangle formed and press. Trim the excess fabric away from the back leaving 1/4" seam allowance
- Place one 2-1/2" Pinwheel B square on top of the other side of 2-1/2" x 4-1/2" Background strip, right sides together (fig. 7). Sew across the diagonal of the square (fig. 7). Flip open the triangle formed and press (fig. 8). Trim the excess fabric away from the back leaving 1/4" seam allowance.
- Repeat Steps 7 and 8 to make four Flying Geese units total.
- Follow the Pinwheel One Block Layout to make six Pinwheel One blocks.
- Repeat Steps 3-10 with Pinwheel C squares in place of Pinwheel A squares and Pinwheel D squares in place of Pinwheel B squares to make six Pinwheel Two blocks.

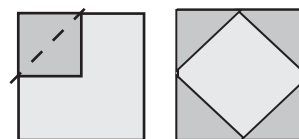


Fig. 1

Fig. 2

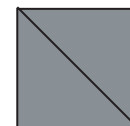


Fig. 3

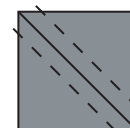


Fig. 4

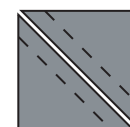


Fig. 5



Fig. 6



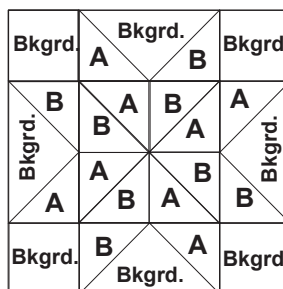
Fig. 7



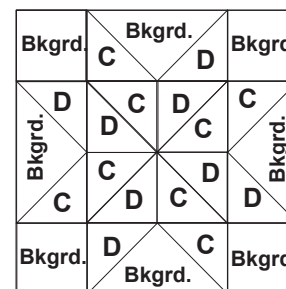
Fig. 8

Quilt Top Assembly Instructions:

- Following the quilt photo for placement, sew together a Pinwheel One block and a Pinwheel Two block for each side border.
- Sew one border to each side of the Center Block.
- Following the quilt photo for placement, sew together two Pinwheel One blocks and two Pinwheel Two Blocks for each the Top and Bottom borders.
- Sew the borders to the quilt top.
- Sew one 2-1/2" x 32-1/2" Inner Border to each side of the quilt top. Sew one 2-1/2" x 36-1/2" Inner Border to the quilt top.
- Sew one 6-1/2" x 36-1/2" Outer border to each side of the quilt top. Sew one 6-1/2" x 36-1/2" Outer Border to the top and bottom of the quilt top.
- Layer, quilt and bind as desired.



Pinwheel One block Layout



Pinwheel Two block Layout