



QUILT GATE

# hyakkaryourann

Quilt and Pattern  
by Gerri Robinson



57"X57"



EDJ-5892-62 INDIGO



EDJ-5892-172 COCOA



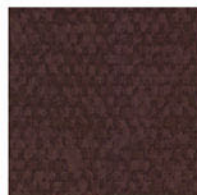
EDJ-5894-103 CLARET



EDJ-5893-34 SAGE



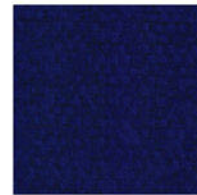
EDJ-5895-97 ROSE



DJ-5896-172 COCOA



EDJ-5896-103 CLARET



EDJ-5896-62 INDIGO



EDJ-5896-97 ROSE

**ROBERTKAUFMAN**  
F A B R I C S

[www.robertkaufman.com](http://www.robertkaufman.com)

# Hyakkaryourann 3

Finished size approx. 57" x 57"

Quilt designed by Gerri Robinson of Planted Seed Designs ([www.plantedseeddesigns.com](http://www.plantedseeddesigns.com))

Machine quilted by Deborah Hobbs of Ta Dah Custom Quilting

## Fabric Requirements

### Blocks

- |                                  |          |
|----------------------------------|----------|
| • EDJ 5896-103 Claret (Fabric A) | 1/3 yard |
| • EDJ 5893-34 Sage (Fabric B)    | 1/4 yard |
| • EDJ 5896-97 Rose (Fabric C)    | 1/3 yard |
| • EDJ 5896-152 Cocoa (Fabric D)  | 1/3 yard |
| • EDJ 5894-103 Claret (Fabric E) | 3/4 yard |

### Border

- |                      |             |
|----------------------|-------------|
| • EDJ 5892-62 Indigo | 1-1/4 yards |
|----------------------|-------------|

### Binding

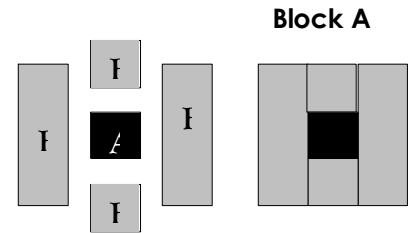
- |                                  |          |                           |
|----------------------------------|----------|---------------------------|
| • EDJ 5896-103 Claret (Fabric A) | 1/2 yard | Cut 6 strips 2 1/2" x WOF |
|----------------------------------|----------|---------------------------|

### Backing

- |                               |         |
|-------------------------------|---------|
| • EDJ 5893-34 Sage (Fabric B) | 4 yards |
|-------------------------------|---------|

## Assembly

- **Block A** – Make 12  
Sew a **Fabric B** 3-1/2" square to the top & bottom of a **Fabric A** 3-1/2" square  
Add a **Fabric B** 3-1/2" x 9-1/2" rectangle to the remaining sides of the above.  
Finished block should measure 9-1/2" square



- **Block B** – Make 13  
Sew a **Fabric E** 3-1/2" square to the left and right sides of a **Fabric A** 3-1/2" square.  
Press seams toward the middle square.

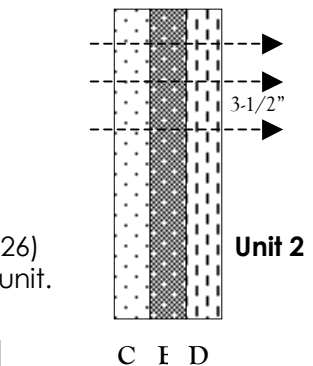
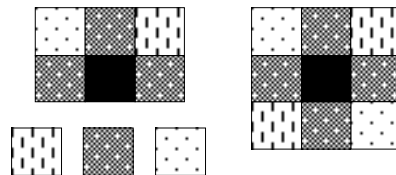


Unit 1

Using the 3-1/2" strips from **Fabrics C, D & E**, sew the strips together lengthwise with **Fabric E** in the middle. Make three strip sets.  
Press seams toward the outer strips.

Cross cut each of these pieced strips into 3-1/2" x 9-1/2" units for Unit 2. (Yield: 26)  
Sew a Unit 2 to the top and bottom of Unit 1 making sure to rotate the bottom unit.  
See diagram below.

Finished block should measure 9-1/2" square



Block B

- Assemble the top by sewing the blocks in rows five across and five down  
Begin Row 1 with Block B, then Row 2 with Block A and continue to alternate.
- **Borders**  
Measure across the center of the quilt both vertically & horizontally; adjust border strip lengths if needed.  
Sew the two 6-1/2" x 45-1/2" border strips to the top and bottom of the quilt.  
Sew the two 6-1/2" x 57-1/2" border strips to the sides of the quilt.

Layer, quilt and bind as desired