

# Bright On!

Quilt designed by  
Heidi Pridemore



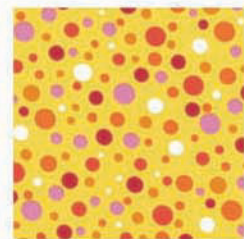
Quilt Size 60 " Square



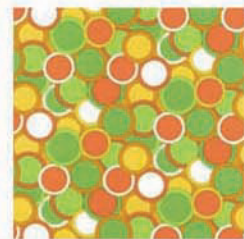
ESK-5784-193 SUMMER



ESK-5739-193 SUMMER



ESK-5738-5 YELLOW



ESK-5737-134 CITRUS



\*EY-4070-39 LIME



\*EY-4070-38 LEMON

visit our website for more quilt patterns

**ROBERTKAUFMAN**  
F A B R I C S

[www.robertkaufman.com](http://www.robertkaufman.com)

\* EY-4070- From our Fusions collection

# BRIGHT-ON

Quilt designed Heidi Pridemore

Quilt- approximate size 60" square

Advanced Beginner Level

All border strip length measurements are approximate. Please measure your quilt top before cutting the length of each border.

## Fabrics Needed:

Fabric A: 1-1/2 yards of ESK-5784-193

Fabric B: 1 yard of EY-4070 Lemon

Fabric C: 2-1/4 yards of ESK-5740-193

Fabric D: 1-1/2 yards of EY-4070 Lime

Fabric E: 1/3 yard of ESK-5738-5

Fabric F: 1/4 yard of ESK-5737-134

Fabric G: 1/4 yard of ESK-5739-193

Backing: 3-1/2 yards of ESK-5784-193

## Cut:

Cut thirteen 6-1/2" squares. Cut six 4-1/2" x width of fabric (WOF). Piece the strips together into four 53" squares.

Cut twenty-six 1-1/2" x 6-1/2" pieces and twenty-six 1-1/2" x 8-1/2" pieces. Cut six 2" x WOF strips. Piece them together into two 2" x 49" strips and two 2" x 46" strips.

Cut twenty-six 2-1/2" x 8-1/2" strips and twenty-six 2-1/2" x 10-1/2" strips. Cut six 2-1/2" x WOF strips. Piece them together into two 2-1/2" x 53" strips and two 2-1/2" x 49" strips. Cut six 2-1/4" x WOF and piece together for the binding.

Cut four 4-1/2" squares and two 4-1/2" x 24-1/2" strips. Cut three 4-1/2" x WOF strips. Piece the strips together into two 4-1/2" x 61".

See applique instructions and cut twenty Large Circles.

See applique instructions and cut twelve Medium Circles.

See applique instructions and cut sixty-four Small Circles.

Piece into one 68" square piece for the back.

## Flower Block Assembly Instructions:

- 1) Sew on 1-1/2" x 6-1/2" Fabric B strip to each side of one 6-1/2" Fabric A square. Sew one 1-1/2" x 8-1/2" Fabric B strip to the top and bottom of the 6-1/2" Fabric A square.
- 2) Sew one 2-1/2" x 8-1/2" Fabric C strip to each side of the Fabric A square from Step 1. Sew one 2-1/2" x 10-1/2" strip to the top and bottom of the square.
- 3) Repeat Steps 1 & 2 to make thirteen Flower Blocks total.
- 4) Follow the quilt layout diagram and piece the quilt top together using the flower squares and the strips cut from Fabric D.
- 5) Trim the quilt top to measure 46" square. The dotted line on the diagram represents where to trim the quilt top.

## Applique Instructions:

- 6) Trace the correct number of templates as listed in the cutting instructions onto the paper side of the fusible web following the manufacturer's instructions.
- 7) Roughly cut out each shape and iron the fusible templates onto the back side of the appropriate fabrics as listed in the cutting directions. Cut out each shape on the drawn line.
- 8) Follow the quilt photo for placement and fuse the Circles to the quilt top. Finish the raw edges with a decorative stitch such as a buttonhole or satin stitch. Make sure to add one Large circle to each 4-1/2" Fabric D squares for the Outer Border Corners.

## Quilt Top Assembly Instructions:

- 9) Sew one 2" x 46" Fabric B strip to each side of the quilt top. Sew one 2" x 49" Fabric B strip to the top and bottom of the quilt top.
- 10) Sew one 2-1/2" x 49" Fabric C strip to each side of the quilt top. Sew one 2-1/2" x 53" strip to the top and bottom of the quilt top.
- 11) Sew one 4-1/2" X 53" Fabric A strip to each side of the quilt top.
- 12) Sew one 4-1/2" Fabric D square to each end of the remaining two 4-1/2" x 53" Fabric A strips. Sew the strips to the top and bottom of the quilt top.
- 13) Layer, quilt and bind as desired.

