

POT HOLDER & OVEN MITT SET

Designed by Erika Bea for RK
www.robertkaufman.com

Featuring **down on the farm**



Finished sizes: Pot Holders: 8" x 8", Oven Mitt: approximately 8" x 12"

Difficulty Rating: **Beginner**


ROBERTKAUFMAN
F A B R I C S

For questions about this pattern, please email Patterns@RobertKaufman.com.

Fabric and Supplies Needed

Fabric amounts based on yardage that is 42" wide.

NOTE: Supplies listed are to make three pot holders and one oven mitt.

Color	Fabric	Name/SKU	Yardage	Color	Fabric	Name/SKU	Yardage
	A	AGBD-18645-3 RED	1/4 yard		D	AGBD-18817-3 RED	1/4 yard
	B	AGBD-18645-14 NATURAL	1/4 yard		E	AGBD-18816-3 RED	1/8 yard
	C	AGBD-18643-276 COUNTRY	3/8 yard		F	AGBD-18644-276 COUNTRY	3/8 yard

Copyright 2019, Robert Kaufman
For individual use only - Not for resale

Other materials for three pot holders:
 six 8" squares of batting (1/2 yard)
 six 8" squares of Insul-Brite (1/2 yard)

Other materials for one oven mitt:
 3/8 yard of batting
 3/8 yard of Insul-Brite

Notes Before You Begin

- Read through all of the instructions before beginning.
- All of the seam allowances are 1/4" unless otherwise noted.
- Press seam allowances open unless otherwise noted.
- Width of fabric (WOF) is equal to at least 42" wide.
- Right sides together has been abbreviated to RST.
- Remember to measure twice and cut once!

Pot Holder Cutting Instructions

From each of Fabrics A-C, cut:
two 8" squares

From Fabric D, cut:
two 3" x WOF strips

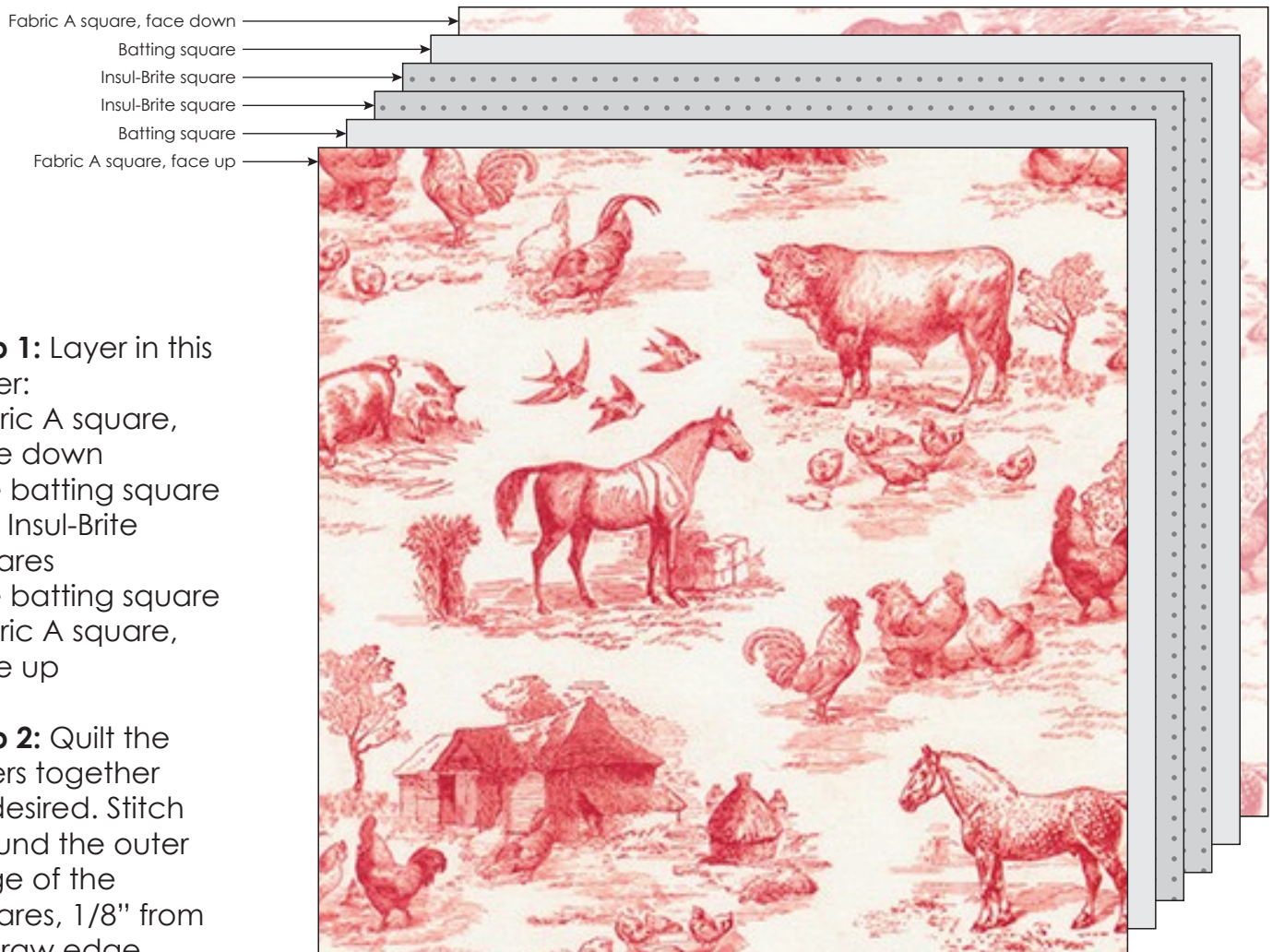
From Fabric E, cut:
one 3" x WOF strip

Oven Mitt Cutting Instructions

From each of Fabrics F, C, batting and Insul-Brite, cut:
two 9" x 13" rectangles

Note: Fabric F will be referred to as the exterior from this point forward, and Fabric C the lining.

Assemble the Pot Holder

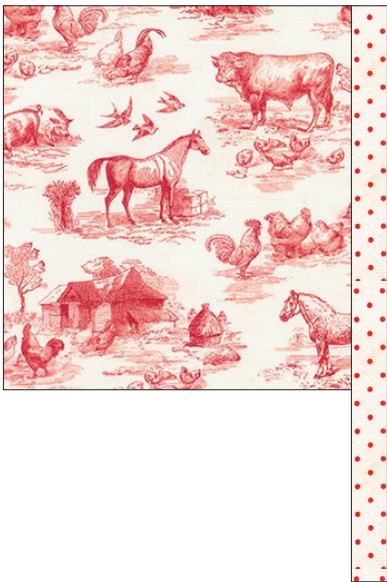
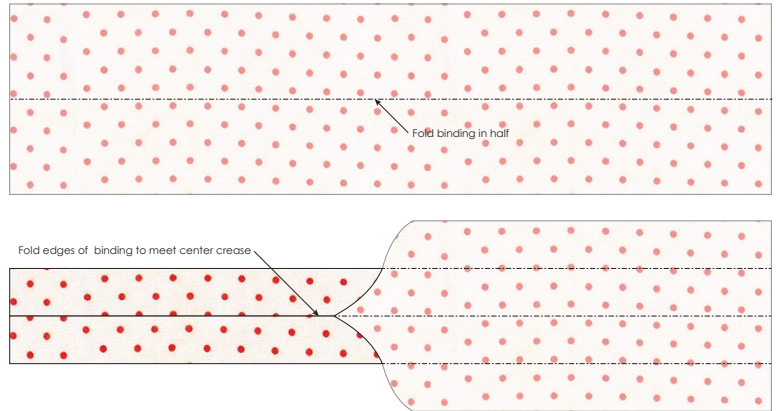


Step 1: Layer in this order:
Fabric A square, face down
one batting square
two Insul-Brite squares
one batting square
Fabric A square, face up

Step 2: Quilt the layers together as desired. Stitch around the outer edge of the squares, 1/8" from the raw edge.

Finish the Pot Holder

Step 3: Fold the Fabric D binding strip in half along the length and press. Open the strip and fold the long raw edges in to meet the center crease, refolding to encase the raw edges and press again.



Step 4: Align one raw end of the binding strip with one corner of the pot holder, as shown.

Step 5: Sew the binding to the pot holder as you would quilt binding, mitering each corner. As you approach the final corner (where the binding starts), fold the raw end in by 1/2" and continue sewing the binding only, sewing it closed.



Step 6: Fold the binding tail to make a loop and attach it to the corner of the pot holder with stitching.

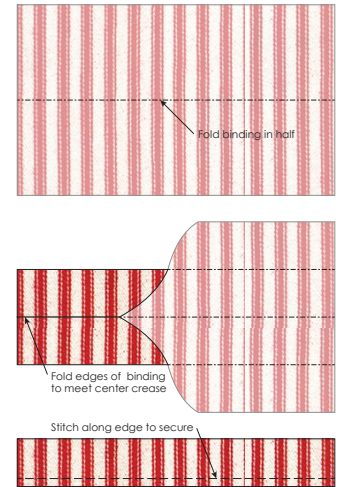
Repeat Steps 1-6 to make a total of three pot holders, referring to the cover photo for fabric pairings.

Your pot holders are complete. Enjoy!

Assemble the Oven Mitt

Note: a 1/2" seam allowance is used for sewing the Mitt together.

Step 1: Using the process described in Step 3 of the Pot Holder project (or simply using a 5" long scrap from that project), make a 5" long piece for the Hanging Tab. Sew along the long edge to secure the raw edges inside at the fold. Set aside.



Step 2: Layer the lining (face down), batting, Insul-Brite and exterior fabric (face up). Quilt in a grid pattern, or other pattern of your choosing. Repeat with the second set of fabrics, batting and Insul-Brite.

Step 3: Cut out two Oven Mitt template shapes from the pattern piece. Be sure that one is cut face up and the other is cut face down (as the mirror image).



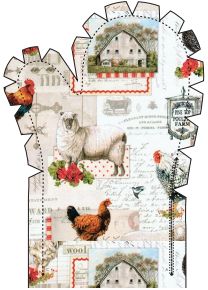
Step 4: Fold the Hanging Tab's short raw ends together and baste 1/8" from the raw edge. Place the Hanging Tab on the exterior of one Mitt piece, at the location indicated on the template, aligning the raw edges of the Hanging Tab with the raw edges of the Mitt. Baste in place 1/8" from the raw edge.

Step 5: Place the two Mitt pieces right sides together. Sew from Point A to Point B using a zigzag stitch, using one extra pass of stitching over the Hanging Tab location.



Step 6: Add double fold binding along the bottom edge of the Mitt, using the process described in the Pot Holder project. You will unfold the Mitt for this step and lay it flat.

Step 7: Place the two Mitt pieces right sides together again and finish sewing around the curved edges of the Mitt from Point B to Point C using a straight (regular) machine stitch, pausing with your needle down to reposition as needed. Repeat your stitching, using a zigzag stitch along the seam inside the Mitt.



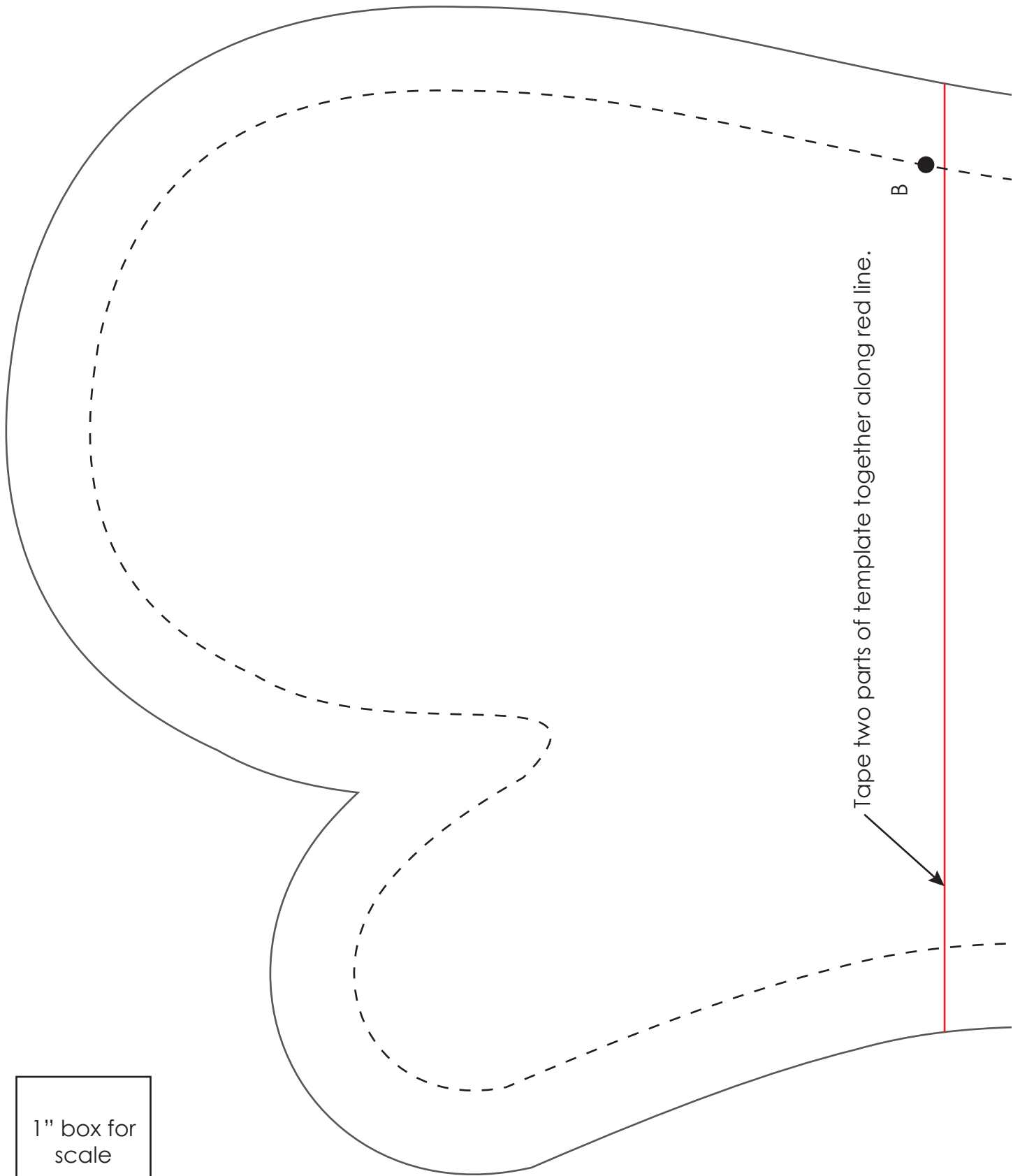
Step 8: Clip into the seam allowance around the curves and in the indentation between the thumb and upper curve of the Mitt, taking care not to clip any stitches.

Turn right side out and press. Your Oven Mitt is complete. Enjoy!

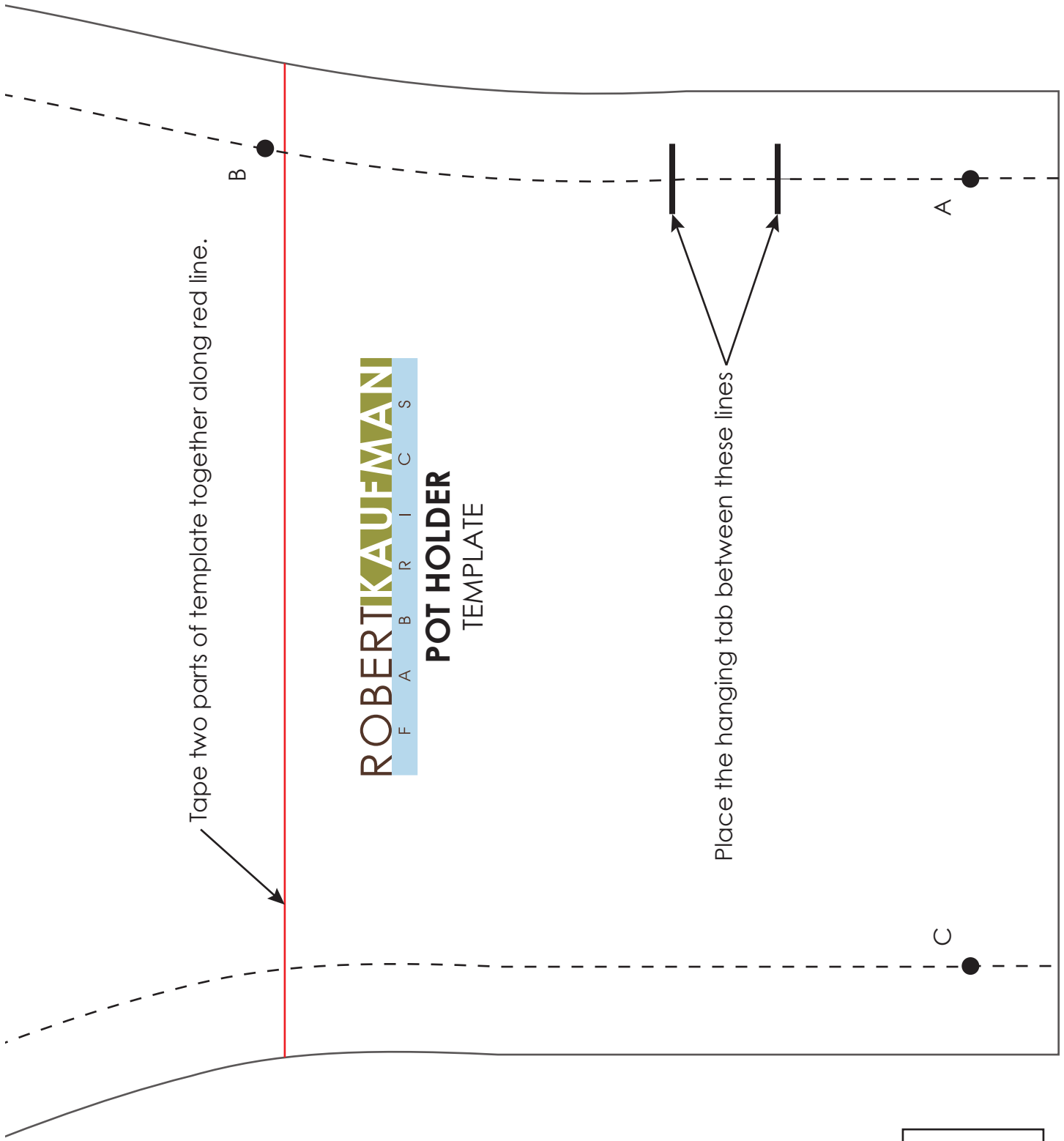
Templates

Print at 100%.

Check size printed correctly using 1" box for scale prior to cutting fabric.



1" box for
scale



Tape two parts of template together along red line.

Place the hanging tab between these lines

1" box for scale

This pattern may be used for personal purposes only and may not be reproduced in any form without the express permission from Robert Kaufman Fabrics. This pattern is not for resale. All patterns, unless otherwise attributed, are © Robert Kaufman Co., Inc. 2005-2019. All rights reserved.