

# PAINTERLY VIEWS

Designed by Elise Lea for RK  
[www.robertkaufman.com](http://www.robertkaufman.com)

Featuring

Painterly Trees 



Finished quilt measures: 53" x 53"

Difficulty Rating: **Beginner**

**ROBERTKAUFMAN**  
F A B R I C S

For questions about this pattern, please email [Patterns@RobertKaufman.com](mailto:Patterns@RobertKaufman.com).



## Fabric and Supplies Needed

Fabric amounts based on yardage that is 42" wide.

Color	Fabric	Name/SKU	Yardage	Color	Fabric	Name/SKU	Yardage
	A	ABXD-22488-238 GARDEN	one full panel		D	ABXD-22496-78 PEACOCK	5/8 yard
	B	ABXD-22495-87 SNOW	1/4 yard		E	ABXD-22495-71 LAGOON	7/8 yard
	C	K001-440 BREAKERS	1/4 yard		Binding*	ABXD-22496-107 PETAL	1/2 yard
<p>Copyright 2024, Robert Kaufman For individual use only - Not for resale</p>				<p>You will also need: 3-1/2 yards for backing</p>			

## Notes Before You Begin

- Read through all of the instructions before beginning.
- All of the seam allowances are 1/4" unless otherwise noted.
- Press seam allowances open unless otherwise noted.
- Width of fabric (WOF) is equal to at least 42" wide.
- Right sides together has been abbreviated to RST.
- Remember to measure twice and cut once!

## Cutting Instructions

### From Fabric A, fussy cut:

four 16-1/2" squares

### From each of Fabrics B and C, cut:

one 3-1/2" x WOF strip. Subcut:

two 3-1/2" squares

Trim the remainder of the strip to 3", then subcut:

two 3" x 16-1/2" rectangles

one 3" x WOF strip. Subcut:

two 3" x 16-1/2" rectangles

**From Fabric D, cut:**

seven 2-1/2" x WOF strips. Subcut:

- two 2-1/2" x 39-1/2" side inner border strips
- one 2-1/2" x 39-1/2" horizontal sashing strip
- two 2-1/2" x 19" vertical sashing strip

Sew the three remaining strips together, then subcut:

- two 2-1/2" x 43-1/2" top/bottom inner border strips

**From Fabric E, cut:**

five 5-1/2" x WOF strips. Sew the strips together, then subcut:

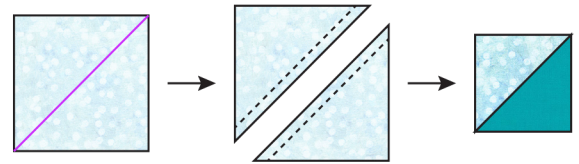
- two 5-1/2" x 53-1/2" top/bottom outer border strips
- two 5-1/2" x 43-1/2" side outer border strips

**From the Binding Fabric, cut:**

six 2-1/2" x WOF strips

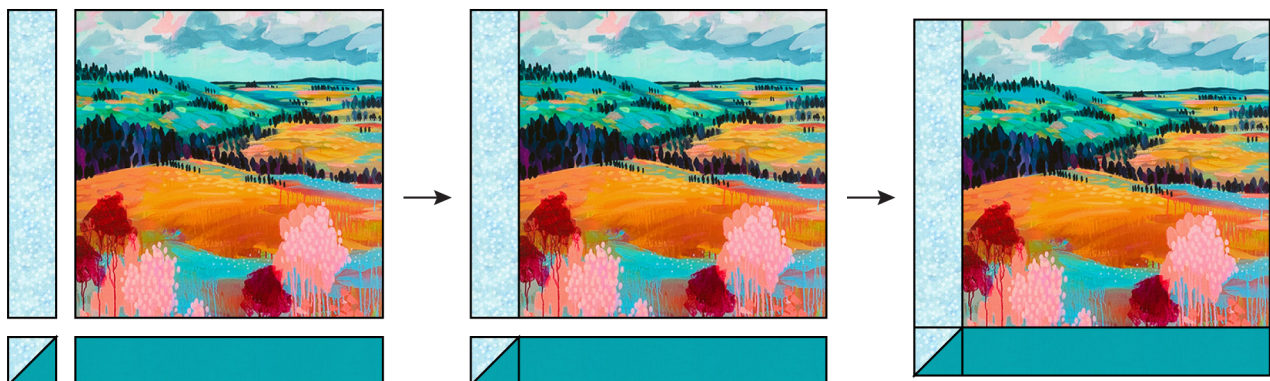
Assemble the Half-Square Triangles (HSTs)

**Step 1:** Pair a 3-1/2" Fabric B square with a 3-1/2" Fabric C square, RST. Mark a diagonal line on the wrong side of one square. Sew 1/4" away from both sides of the marked line. Cut on the marked line creating two half-square triangles (HSTs). Press toward the darker fabric. Trim to 3" square. Repeat to make four HSTs.

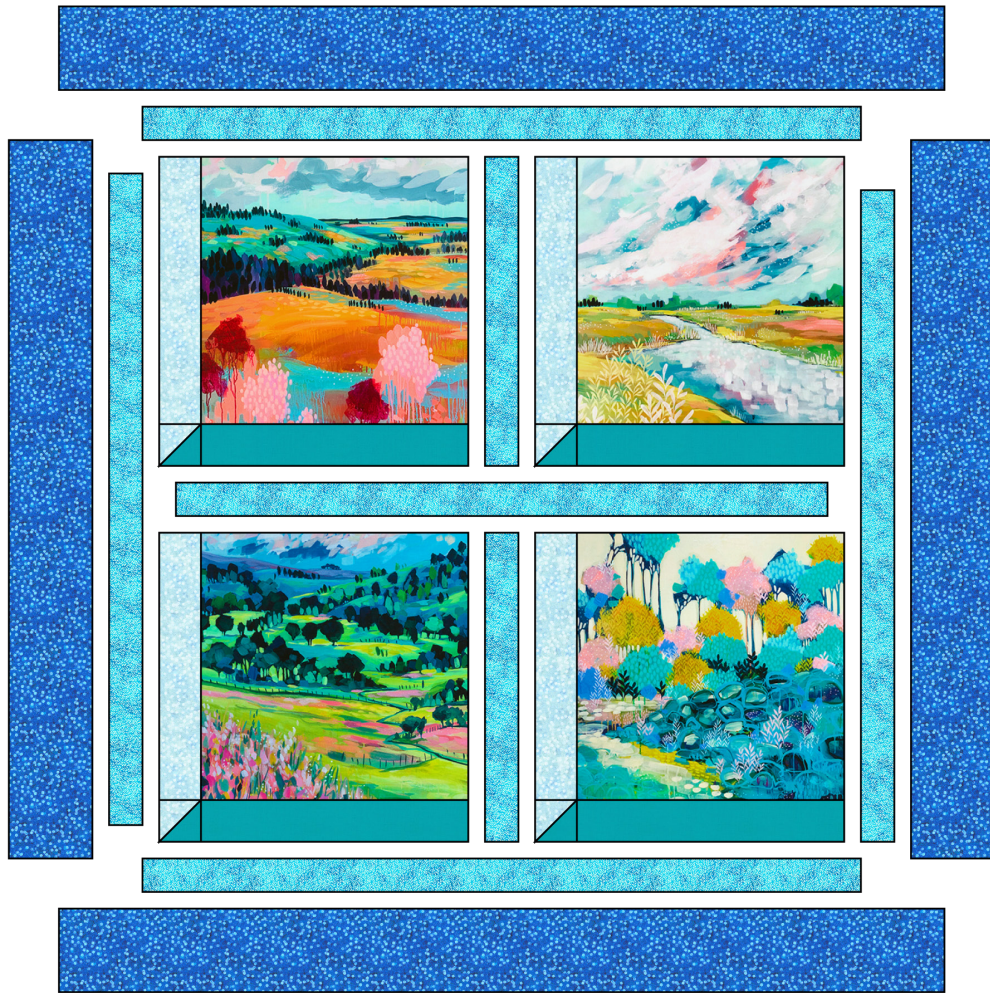


Assemble the Blocks

**Step 2:** Arrange one 16-1/2" Fabric A square, one 3" x 16-1/2" Fabric B rectangle, one 3" HST and one 3" x 16-1/2" Fabric C rectangle in two rows of two as shown. Sew together to form rows and press the seams towards the Fabric B and C rectangles. Nest the seams and sew the rows together. Press to complete the block. Make four blocks.



## Assemble the Quilt



**Step 3:** Arrange the blocks into two rows of two blocks. Note the fabric placement and block orientation in the Quilt Assembly Diagram. Place a vertical sashing strip between the blocks. Place a horizontal sashing strip between the rows.

**Step 4:** Sew the blocks and vertical sashing strips together to form rows. Press the seams open.

**Step 5:** Sew the rows and horizontal sashing strip together to form the quilt center. Press the row seams open.

**Step 6:** Sew the side inner borders to the sides of the quilt center. Press toward the borders. Sew the top and bottom inner borders to the quilt center. Press toward the borders.

**Step 7:** Sew the side outer borders to the sides of the quilt center. Press toward the borders. Sew the top and bottom outer borders to the quilt center. Press toward the borders.

Your quilt top is complete! Baste, quilt, bind, and enjoy!

This pattern may be used for personal purposes only and may not be reproduced in any form without the express permission from Robert Kaufman Fabrics. This pattern is not for resale. All patterns, unless otherwise attributed, are © Robert Kaufman Co., Inc. 2005-2024. All rights reserved.