

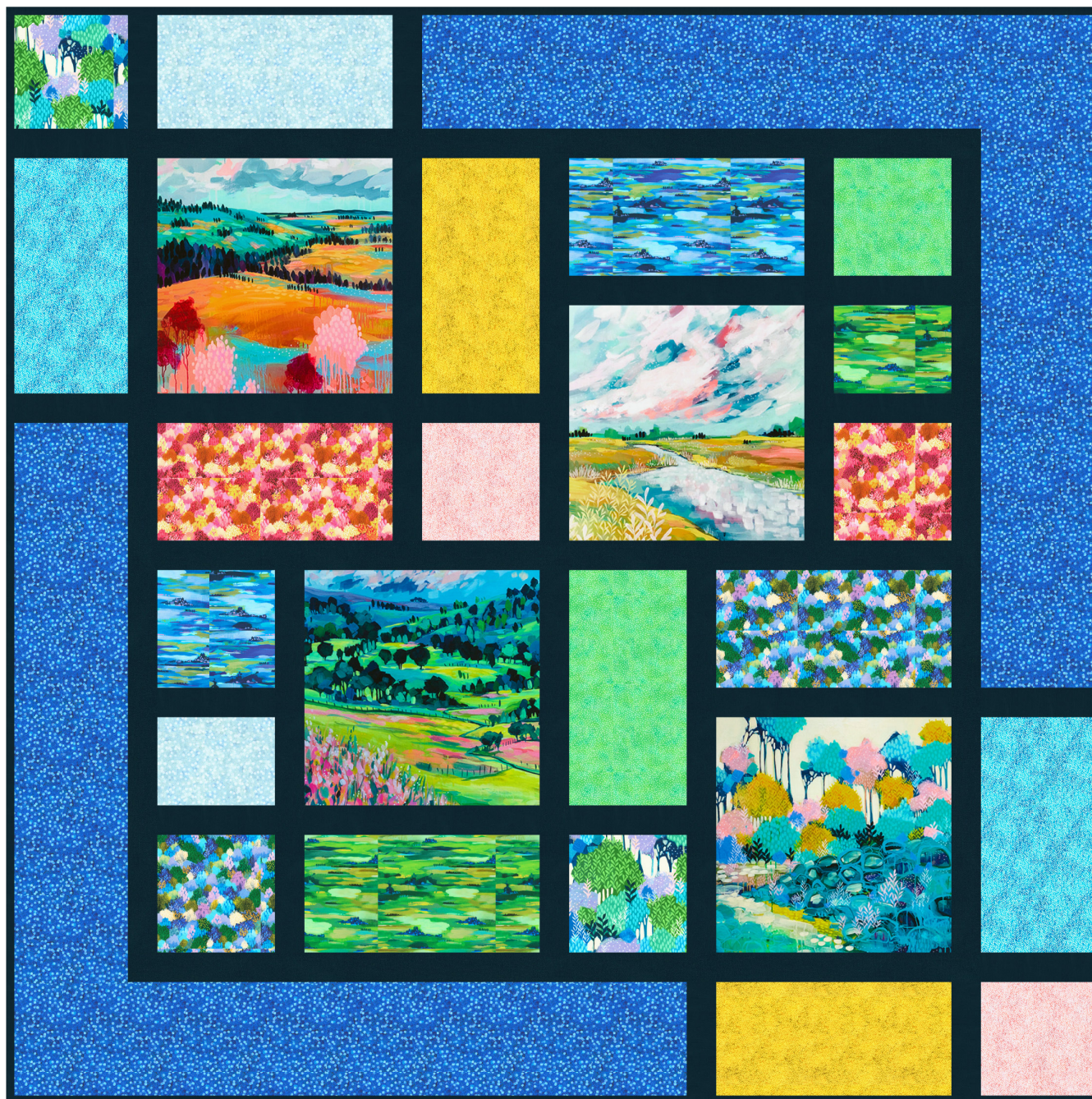
# Painterly Trees

Designed by Elise Lea for RK  
[www.robertkaufman.com](http://www.robertkaufman.com)

Featuring



## Painterly Trees



Finished quilt measures: 74" x 74"

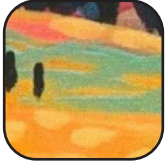




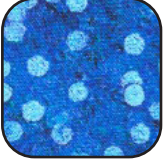


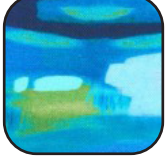

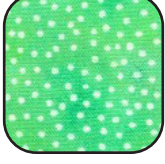

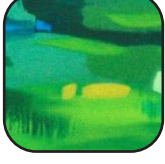
Difficulty Rating: **Beginner**

**ROBERTKAUFMAN**  
F A B R I C S

For questions about this pattern, please email [Patterns@RobertKaufman.com](mailto:Patterns@RobertKaufman.com).

## Fabric and Supplies Needed

*Fabric amounts based on yardage that is 42" wide.*

Color	Fabric	Name/SKU	Yardage	Color	Fabric	Name/SKU	Yardage
	A	ABXD-22488-238 GARDEN	one full panel		H	ABXD-22495-87 SNOW	1/4 yard
	B	ABXD-22496-135 MUSTARD	1/4 yard		I	ABXD-22489-299 RIVIERA	1/4 yard
	C	ABXD-22494-112 RASPBERRY	1/4 yard		J	ABXD-22495-71 LAGOON	1-1/4 yards
	D	ABXD-22496-107 PETAL	1/4 yard		K	ABXD-22496-78 PEACOCK	1/4 yard
	E	ABXD-22491-73 LAKE	1/4 yard		L	K001-1178 INDIGO	1-3/8 yards
	F	ABXD-22497-47 GRASS	1/4 yard		Binding*	K001-1178 INDIGO	5/8 yard
	G	ABXD-22491-47 GRASS	1/4 yard	<p><i>*Also used for Fabric L</i></p> <div style="background-color: #cccccc; padding: 10px; text-align: center; margin-top: 10px;"> <p>You will also need: 4-5/8 yards for backing</p> </div>			

Copyright 2024, Robert Kaufman  
For individual use only - Not for resale

## Notes Before You Begin

- Read through all of the instructions before beginning.
- All of the seam allowances are 1/4" unless otherwise noted.
- Press seam allowances open unless otherwise noted.
- Width of fabric (WOF) is equal to at least 42" wide.
- Right sides together has been abbreviated to RST.
- Remember to measure twice and cut once!

## Cutting Instructions

### **From Fabric A, fussy cut:**

four 16-1/2" squares

### **From each of Fabrics B and K, cut:**

one 8-1/2" x WOF strip. Subcut:  
two 8-1/2" x 16-1/2" rectangles

### **From each of Fabrics C, E-G, and I, cut:**

one 8-1/2" x WOF strip. Subcut:  
one 8-1/2" x 16-1/2" rectangle  
one 8-1/2" square

### **From Fabric D, cut:**

one 8-1/2" x WOF strip. Subcut:  
two 8-1/2" squares

### **From Fabric H, cut:**

one 8-1/2" x WOF strip. Subcut:  
one 8-1/2" x 16-1/2" rectangle  
one 8-1/2" x 6-1/2" rectangle

### **From Fabric J, cut:**

five 8-1/2" x WOF strips. Subcut:  
two 8-1/2" x 38-1/2" rectangles  
Sew the three remaining strips together, then subcut:  
two 8-1/2" x 46-1/2" rectangles

### **From Fabric L, cut:**

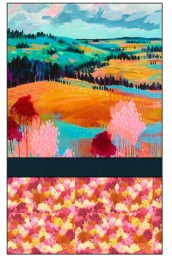
eighteen 2-1/2" x WOF strips. Subcut:  
two 2-1/2" x 26-1/2" sashing strips  
four 2-1/2" x 26-1/2" rectangles  
four 2-1/2" x 16-1/2" rectangles  
fourteen 2-1/2" x 8-1/2" rectangles  
Sew the remaining six strips together, then subcut:  
two 2-1/2" x 58-1/2" sashing strips  
three 2-1/2" x 54-1/2" sashing strips

### **From Binding Fabric, cut:**

eight 2-1/2" x WOF strips

## Assemble the Blocks

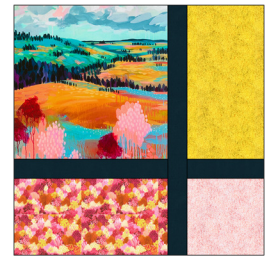
**Step 1:** Sew one 16-1/2" Fabric A square, one 2-1/2" x 16-1/2" Fabric L rectangle, and one 8-1/2" x 16-1/2" Fabric C rectangle together in a column as shown. Press.



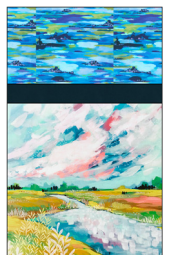
**Step 2:** Sew one 8-1/2" x 16-1/2" Fabric B rectangle, one 2-1/2" x 8-1/2" Fabric L rectangle, and one 8-1/2" Fabric C square together in a column as shown. Press.



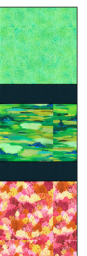
**Step 3:** Sew a 2-1/2" x 26-1/2" Fabric L rectangle between the units created in the two previous steps to form the block. Press.



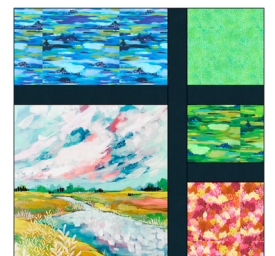
**Step 4:** Sew one 8-1/2" x 16-1/2" Fabric E rectangle, one 2-1/2" x 16-1/2" Fabric L rectangle, and one 16-1/2" Fabric A square together in a column as shown. Press.



**Step 5:** Sew one 8-1/2" Fabric F square, one 2-1/2" x 8-1/2" Fabric L rectangle, one 8-1/2" x 6-1/2" Fabric G rectangle, one 2-1/2" x 8-1/2" Fabric L rectangle, and one 8-1/2" Fabric C square together in that order to form a column as shown. Press.



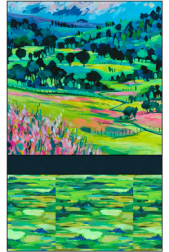
**Step 6:** Sew a 2-1/2" x 26-1/2" Fabric L rectangle between the units created in the two previous steps to form the block. Press.



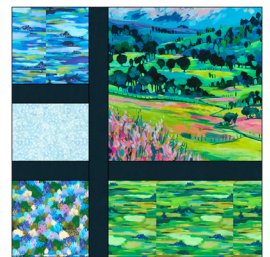
**Step 7:** Sew one 8-1/2" Fabric E square, one 2-1/2" x 8-1/2" Fabric L rectangle, one 8-1/2" x 6-1/2" Fabric H rectangle, one 2-1/2" x 8-1/2" Fabric L rectangle, and one 8-1/2" Fabric I square together in that order to form a column as shown. Press.



**Step 8:** Sew one 16-1/2" Fabric A square, one 2-1/2" x 16-1/2" Fabric L rectangle, and one 8-1/2" x 16-1/2" Fabric G rectangle together in a column as shown. Press.



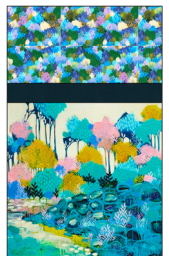
**Step 9:** Sew a 2-1/2" x 26-1/2" Fabric L rectangle between the units created in the two previous steps to form the block. Press.



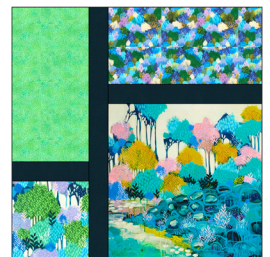
**Step 10:** Sew one 8-1/2" x 16-1/2" Fabric F rectangle, one 2-1/2" x 8-1/2" Fabric L rectangle, and one 8-1/2" Fabric I square together in a column as shown. Press.



**Step 11:** Sew one 8-1/2" x 16-1/2" Fabric I rectangle, one 2-1/2" x 16-1/2" Fabric L rectangle, and one 16-1/2" Fabric A square together in a column as shown. Press.



**Step 12:** Sew a 2-1/2" x 26-1/2" Fabric L rectangle between the units created in the two previous steps to form the block. Press.



## Assemble the Quilt

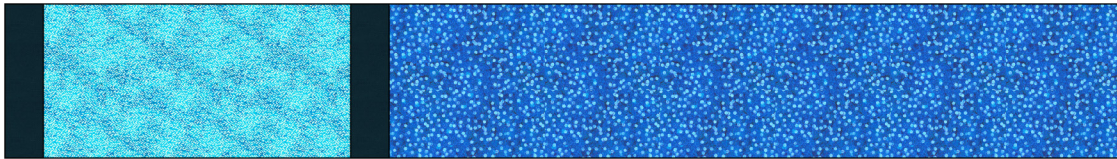
**Step 13:** Arrange the blocks into two rows of two blocks. Note the fabric placement and block orientation in the Quilt Assembly Diagram on the next page. Place a 2-1/2" x 26-1/2" Fabric L sashing strip between the blocks.

**Step 14:** Sew the blocks and sashing strips together to form rows. Press the seams open.

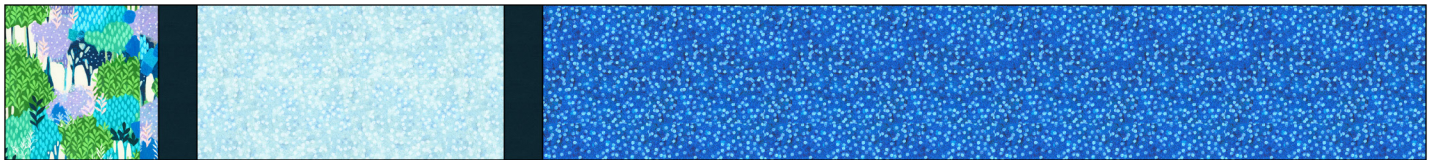
**Step 15:** Place a 2-1/2" x 54-1/2" Fabric L sashing strip between the rows. Sew the rows and sashing strip together to form the quilt center. Press the seams open.

**Step 16:** Sew the side inner borders to the sides of the quilt center. Press toward the borders. Sew the top and bottom inner borders to the quilt center. Press toward the borders.

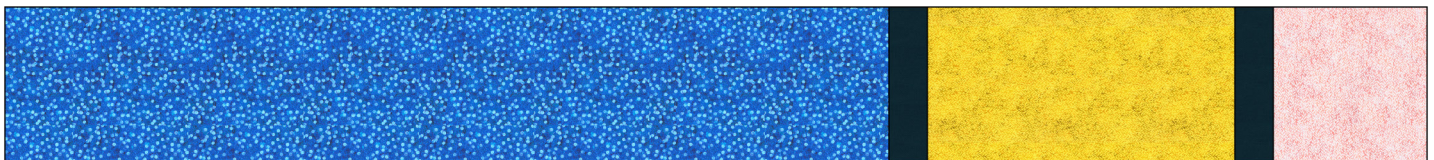
**Step 17:** Sew one 2-1/2" x 8-1/2" Fabric L rectangle, one 8-1/2" x 16-1/2" Fabric K rectangle, one 2-1/2" x 8-1/2" Fabric L rectangle, and one 8-1/2" x 38-1/2" Fabric J rectangle together in that order. Press. Make two side outer borders.

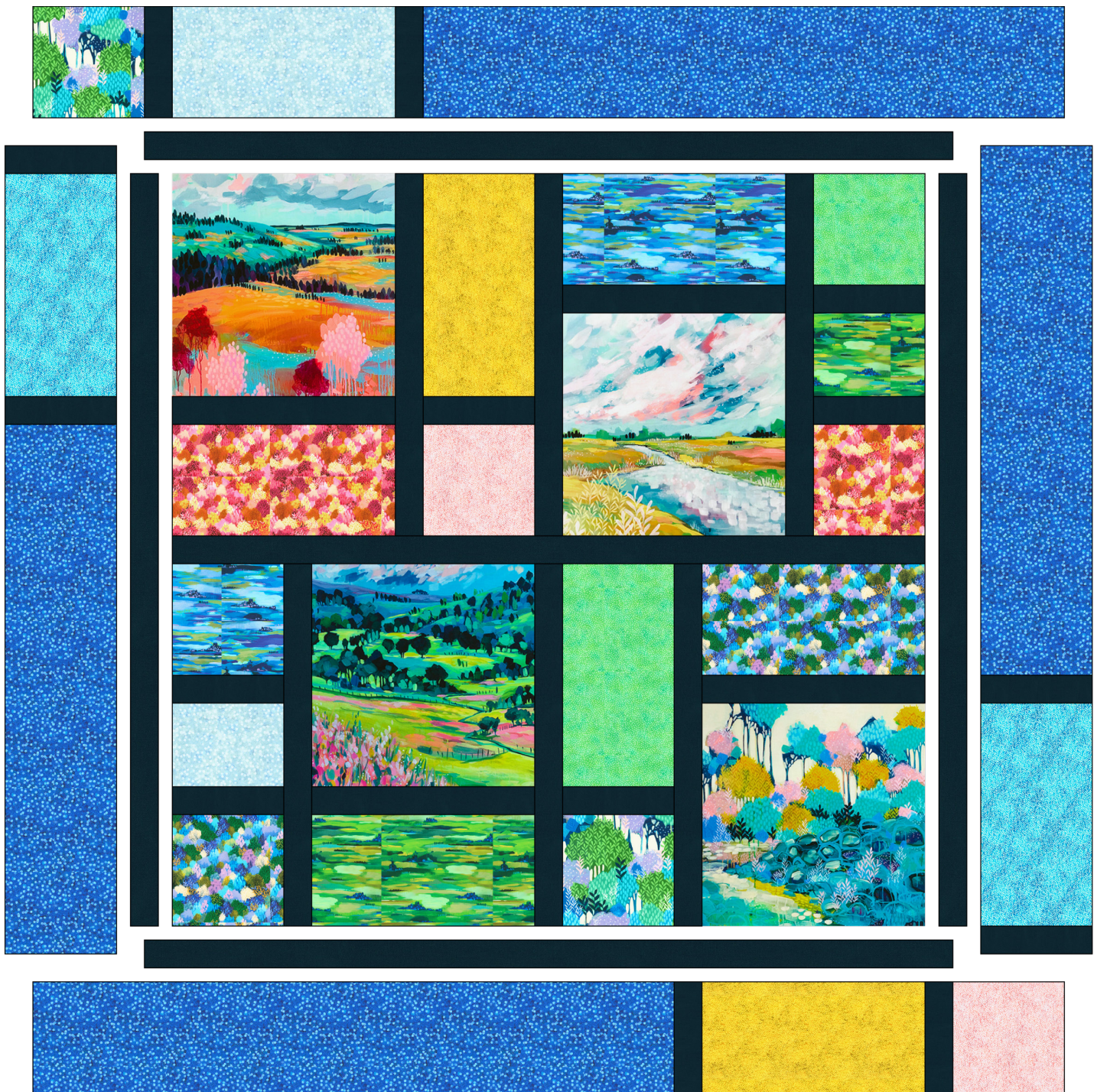


**Step 18:** Sew one 8-1/2" Fabric I square, one 2-1/2" x 8-1/2" Fabric L rectangle, one 8-1/2" x 16-1/2" Fabric H rectangle, one 2-1/2" x 8-1/2" Fabric L rectangle, and one 8-1/2" x 46-1/2" Fabric J rectangle together in that order. Press to complete the top outer border.



**Step 19:** Sew one 8-1/2" x 46-1/2" Fabric J rectangle, one 2-1/2" x 8-1/2" Fabric L rectangle, one 8-1/2" x 16-1/2" Fabric B rectangle, one 2-1/2" x 8-1/2" Fabric L rectangle, and one 8-1/2" Fabric D square together in that order. Press to complete the bottom outer border.





**Step 20:** Pay attention to the orientation of the side outer borders in the Quilt Assembly Diagram. Sew the side outer borders to the sides of the quilt center. Press toward the borders. Sew the top and bottom outer borders to the quilt center. Press toward the borders.

Your quilt top is complete! Baste, quilt, bind, and enjoy!

This pattern may be used for personal purposes only and may not be reproduced in any form without the express permission from Robert Kaufman Fabrics. This pattern is not for resale. All patterns, unless otherwise attributed, are © Robert Kaufman Co., Inc. 2005-2024. All rights reserved.