

ORIENTAL TRADITIONS

Quilt designed by Heidi Pridemore

Advanced Beginner Level
Approximate size: 65" x 83"



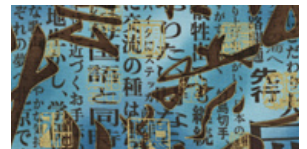
ESKM-8606-192 Spring



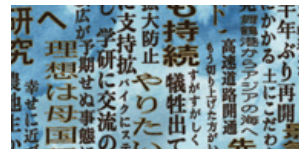
ETJM-8608-200 Vintage



EHJM-8609-4 Blue



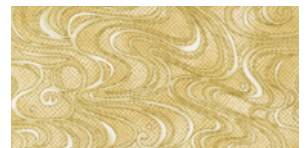
EHJM-8610-192 Spring



EHJM-8611-192 Spring



ESKM-8613-192 Spring



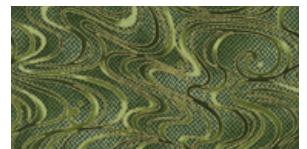
EUJM-8614-15 Ivory



EUJM-8614-192 Spring



EUJM-8614-133 Gold



EUJM-8614-44 Forest

download more FREE patterns at:

www.robertkaufman.com
ROBERTKAUFMAN
F A B R I C S

Oriental Traditions Quilt

Quilt designed Heidi Pridemore

Quilt approximate size 65" x 83"

All border strip length measurements are approximate. Please measure your quilt top before cutting the length of each border.

Fabric Requirements

Fabric A: 1-3/4 yards EUJM 8614-192

Fabric B: 1/2 yard EHJM 8609-4

Fabric C: 1-1/2 yards EHJM 8611-192

Fabric D: 1/2 yard EHJM 8610-192

Fabric E: 1/2 yard ESKM 8613-192

Fabric F: 1 yard EUJM 8614-15

Fabric G: 2 yards EUJM 8614-44

Fabric H: 1-1/2 yards EUJM 8614-133

Fabric I: 1/2 yard ESKM 8606-192

Fabric J: 1/3 yard ETJ 8608-200

Backing: 5-1/2 yards of Your Choice

Cutting:

Cut (192) 3-1/2" squares.

Cut twelve 6-1/2" squares.

Cut twelve 6-1/2" squares. Cut seven 4-1/2" x width of fabric (WOF) strips.

Piece the strips together to make two 4-1/2" x 72-1/2" and two 4-1/2" x 54-1/2" strips for the Outer Border. Cut four 4-1/2" squares for the Outer Border.

Cut twelve 6-1/2" squares.

Cut twelve 6-1/2" squares

Cut ninety-six 3-1/2" squares.

Cut ninety-six 3-1/2" x 6-1/2" strips. Cut eight 2-1/4" x WOF strips for the Binding.

Cut ninety-six 3-1/2" squares, four 2" x 6" and four 2" x 4-1/2" strips. Cut seven 2" x WOF strips. Piece the strips together to make two 2" x 72-1/2" and two 2" x 54-1/2" strips for the Inner Border.

Cut six 6-1/2" squares.

Cut six 6-1/2" squares.

Cut and sew the backing into one 73" x 91" for the backing.

Assembly Instructions:

- 1) To make one square-in-a-square corner, place one 3-1/2" Fabric A square to the top left corner of one 6-1/2" Fabric B square, right sides together (fig. 1). Sew across the diagonal of the smaller square from the upper right corner to the lower left corner (fig. 1). Flip open the triangle formed and press (fig. 2). Trim away the excess fabric 1/4" from behind the triangle 1/4" away from the sewn seam.
- 2) Follow Figure 3 for the seam direction to add a 3-1/2" Fabric A square to each of the remaining corners of the 6-1/2" Fabric B square to make one Fabric B square-in-a-square corner.
- 3) Repeat Steps 1-2 to make twelve Fabric B square-in-a-square corners.
- 4) Repeat Steps 1-2 with twelve 6-1/2" Fabric C squares and forty-eight 3-1/2" Fabric A squares to make twelve Fabric C square-in-a-squares corners.
- 5) Repeat Steps 1-2 with twelve 6-1/2" Fabric D squares and forty-eight 3-1/2" Fabric A squares to make twelve Fabric D square-in-a-squares corners.
- 6) Repeat Steps 1-2 with twelve 6-1/2" Fabric E squares and forty-eight 3-1/2" Fabric A squares to make twelve Fabric E square-in-a-squares corners.
- 7) To make the Star Point Block, place one 3-1/2" Fabric F square on the left side of one 3-1/2" x 6-1/2" Fabric G strip, right sides together (Fig. 4). Sew across the diagonal of the square from the upper right corner to the lower left corner (fig. 4). Flip open the triangle formed and press (fig. 5). Trim away the excess fabric from behind the triangle leaving a 1/4" seam allowance.
- 8) Place one 3-1/2" Fabric H square on the right side of the 3-1/2" x 6-1/2" Fabric G strips, right sides together (Fig. 6). Sew across the diagonal of the square from the upper right corner to the lower left corner (fig. 6). Flip open the triangle formed and press (fig. 7). Trim away the excess fabric from behind the triangle leaving a 1/4" seam allowance.
- 9) Repeat Steps 7-8 to make the forty-eight left halves.
- 10) Repeat Steps 7-8 following Figure 8 for the sewing direction to make forty-eight right halves.
- 11) Following Figure 9 sew together one left and one right half to make a star point. Make forty-eight star points total.
- 12) Refer to the quilt photo to make six blocks with 6-1/2" Fabric I squares in the center and six blocks with 6-1/2" Fabric J squares in the center.
- 13) Refer to the quilt photo and sew the blocks together to make the quilt top.
- 14) Sew one 2" x 72-1/2" Fabric H strip to each side of the quilt top. Sew one 4-1/2" x 72-1/2" Fabric C strip to each side of the quilt top.
- 15) Sew one 2" x 4-1/2" Fabric H strip to one side of a 4-1/2" Fabric C square. Sew one 2" x 6" Fabric H strip to the bottom of the 4-1/2" Fabric C square to make one corner. Repeat to make four corners.
- 16) Sew one 2" x 54-1/2" Fabric H strip to one 4-1/2" x 54-1/2" Fabric C strip to make the top border. Repeat to make the bottom border. Refer to the quilt photo and sew one corner from Step 15 to each end of the top and bottom border. Sew the borders to the quilt top.
- 17) Layer, quilt and bind as desired.

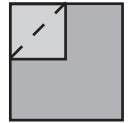


FIG. 1

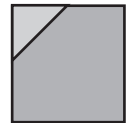


FIG. 2



FIG. 3

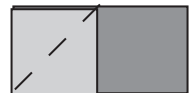


FIG. 4

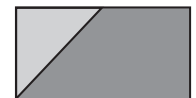


FIG. 5

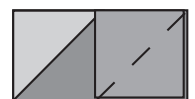


FIG. 6

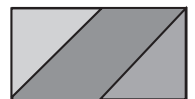


FIG. 7



FIG. 8

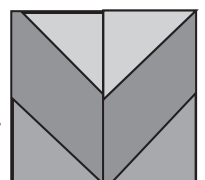


FIG. 9