

ON THE DIAGONAL

Designed by Debbie Beaves for RK
www.robertkaufman.com

Featuring FLOWERHOUSE

Brightly So
Debbie Beaves



Finished quilt measures: 50" x 60"

Difficulty Rating: **Intermediate**

ROBERTKAUFMAN
F A B R I C S

For questions about this pattern, please email Patterns@RobertKaufman.com.

Fabric and Supplies Needed

Fabric amounts based on yardage that is 42" wide.

Color	Fabric	Name/SKU	Yardage	Color	Fabric	Name/SKU	Yardage
	A	FLH-21175-2 BLACK	1-1/4 yards		G	FLH-21175-7 GREEN	1/4 yard
	B	FLH-21175-8 ORANGE	1/4 yard		H	FLH-21176-22 VIOLET	1/4 yard
	C	FLH-21174-5 YELLOW	1/4 yard		I	FLH-21173-14 NATURAL	3/4 yard
	D	FLH-21176-7 GREEN	1/4 yard		J	FLH-21170-2 BLACK	3/4 yard
	E	FLH-21175-22 VIOLET	1/4 yard		Binding*	FLH-21175-2 BLACK <i>*Also used for Fabric A</i>	1/2 yard
	F	FLH-21170-14 NATURAL	1/4 yard	<p>You will also need: 3-1/4 yards for backing</p>			

Copyright 2022, Robert Kaufman
For individual use only - Not for resale

Notes Before You Begin

- Read through all of the instructions before beginning.
- All of the seam allowances are 1/4" unless otherwise noted.
- Press seam allowances open unless otherwise noted.
- Width of fabric (WOF) is equal to at least 42" wide.
- Right sides together has been abbreviated to RST.
- Remember to measure twice and cut once!

Cutting Instructions

From Fabric A, cut:

five 8-1/2" x WOF strips. Subcut:
twenty 8-1/2" squares.

Trace Template 1 found on page 8 onto two opposite corners of each square, then cut on the traced lines.



From each of Fabrics B and C, cut:

one 4-1/2" x WOF strip.

Trace Template 2 onto the strip four times, then cut on the traced lines.

Trim the remainder of the strip to 2-1/2", then subcut:
six 2-1/2" squares.



From each of Fabrics D and H, cut:

one 4-1/2" x WOF strip.

Trace Template 2 onto the strip five times, then cut on the traced lines.

Trim the remainder of the strip to 2-1/2", then subcut:
six 2-1/2" squares.



From each of Fabrics E and G, cut:

one 5" x WOF strip.

Cut eight 2-1/2" squares (Cut four 2-1/2" strips lengthwise, then cut them in half.)

Trace Template 2 onto the strip seven times, then cut on the traced lines.



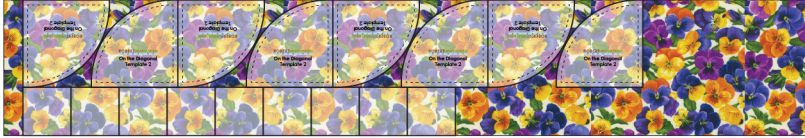
From Fabric F, cut:

one 4-1/2" x WOF strip.

Trace Template 2 onto the strip eight times, rotating the template to nest the quarter-circles. Cut on the traced lines.

one 2-1/2" x WOF strip. Subcut:

nine 2-1/2" squares.



From Fabric I, cut:

ten 2-1/2" x WOF strips. Subcut:

eighteen 2-1/2" x 8-1/2" rectangles.

twelve 2-1/2" x 5-1/2" rectangles.

fifty 2-1/2" x 3-1/2" rectangles.

From Fabric J, cut:

five 4-1/2" x WOF strips. Sew the strips together end-to-end, then subcut:

two 4-1/2" x 52-1/2" side border strips.

two 4-1/2" x 50-1/2" top and bottom border strips.

From the Binding Fabric, cut:

six 2-1/2" x WOF strips.

Assemble the Blocks

Step 1: Gather:

- one Fabric A unit
- one Fabric B quarter-circle
- one Fabric C quarter-circle

Fold each unit in half and fingerpress to mark the centerpoint of the curved edge.

Step 2: Place a quarter-circle on top of the Fabric A unit, RST. Align the finger pressed centers and pin in place. Manipulate the pieces to align the edges and pin the edges in place. Place more pins along the curve as desired.



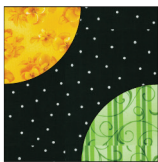
Step 3: Sew along the curved edge, easing the fullness as you sew. Press the seam away from the corner.



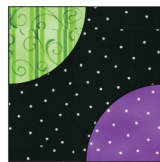
Step 4: Repeat steps 2-3 to add the second quarter-circle to the block. Make two B/C blocks.



Step 5: Repeat steps 1-4 to make blocks in the following quantities:



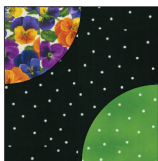
two C/D blocks



three D/E blocks



four E/F blocks



four F/G blocks



three G/H blocks



two H/B blocks

Assemble the Sashing Strips

Step 6: Gather:

two 2-1/2" x 3-1/2" Fabric I rectangles
one 2-1/2" Fabric B square

Arrange the units in a column beginning and ending with a Fabric I rectangle.

Step 7: Sew the column together and press the seam towards the center square. Make three Fabric B vertical sashing strips.



Step 8: Repeat steps 6-7 using 2-1/2" squares in Fabrics C-H to make vertical sashing strips in the following quantities:



three Fabric C
vertical sashing strips



three Fabric D
vertical sashing strips



four Fabric E
vertical sashing strips



five Fabric F
vertical sashing strips



four Fabric G
vertical sashing strips



three Fabric H
vertical sashing strips

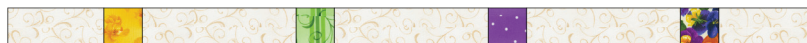
Step 9: Gather:

two 2-1/2" x 5-1/2" Fabric I rectangles
three 2-1/2" x 8-1/2" Fabric I rectangles
one 2-1/2" Fabric B square
one 2-1/2" Fabric C square
one 2-1/2" Fabric D square
one 2-1/2" Fabric E square

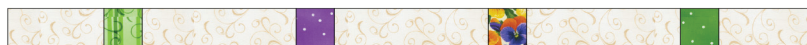
Step 10: Arrange the units in a row as shown. Sew the row together and press the seams towards the squares to complete the horizontal sashing strip for the top of the quilt.



Step 11: Repeat steps 9-10 using 2-1/2" squares in Fabrics B-H to make one horizontal sashing strip in each of the following fabric combinations:



one C/D/E/F horizontal sashing strip



one D/E/F/G horizontal sashing strip



one E/F/G/H horizontal sashing strip



one F/G/H/B horizontal sashing strip



one G/H/B/C horizontal sashing strip

Assemble the Quilt



Step 12: Refer to the Quilt Assembly Diagram to layout of the blocks in five rows of four blocks. Separate the blocks with the vertical sashing strips, then sew the rows together. Press the seams open.

Step 13: Place the horizontal sashing strips between each of the rows and at the top and bottom of the quilt top. Sew the quilt center together, then press the seams open.

Step 14: Sew the side borders to the sides of the quilt center. Press toward the borders. Sew the top and bottom borders to the quilt center. Press toward the borders.

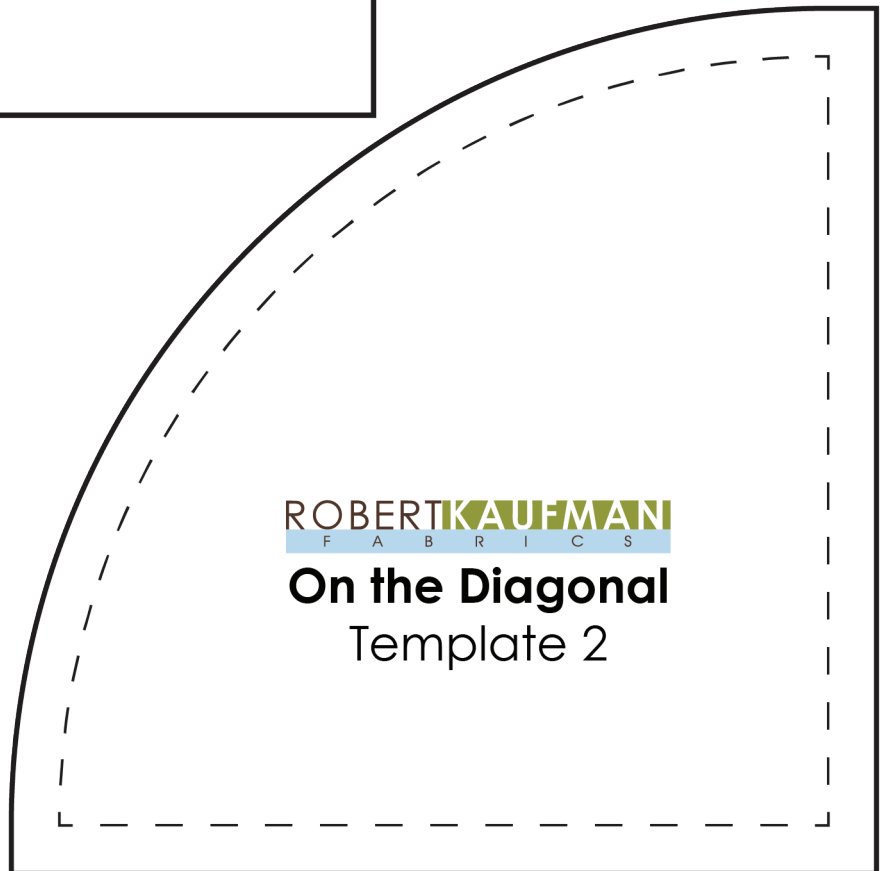
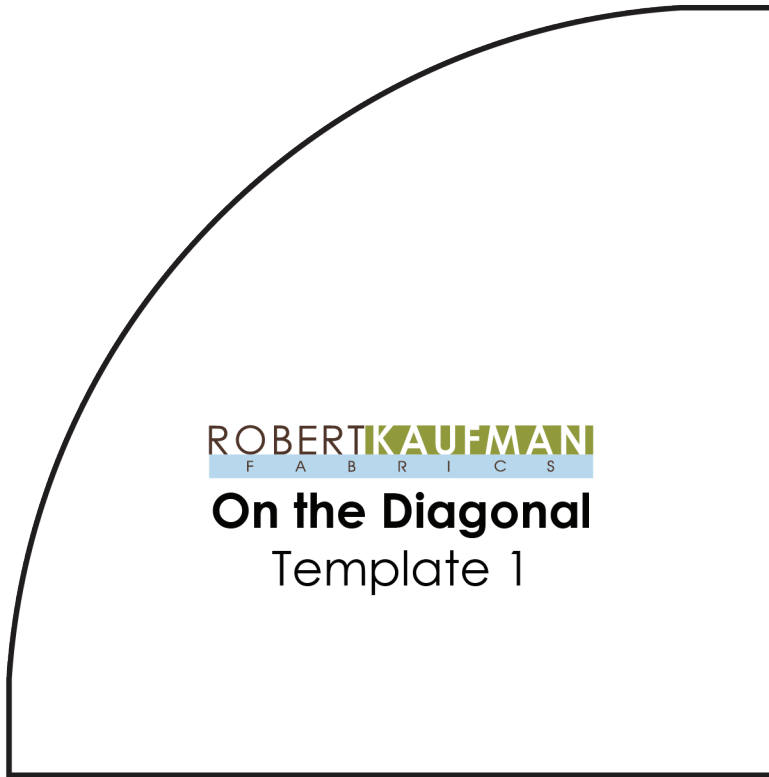
Your quilt top is complete! Baste, quilt, bind, and enjoy!

Templates

Print at 100%.

Check size printed correctly using 1" box for scale prior to cutting fabric.

1" box for
scale



This pattern may be used for personal purposes only and may not be reproduced in any form without the express permission from Robert Kaufman Fabrics. This pattern is not for resale. All patterns, unless otherwise attributed, are © Robert Kaufman Co., Inc. 2005-2022. All rights reserved.