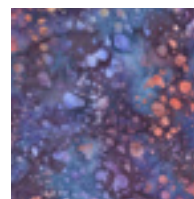
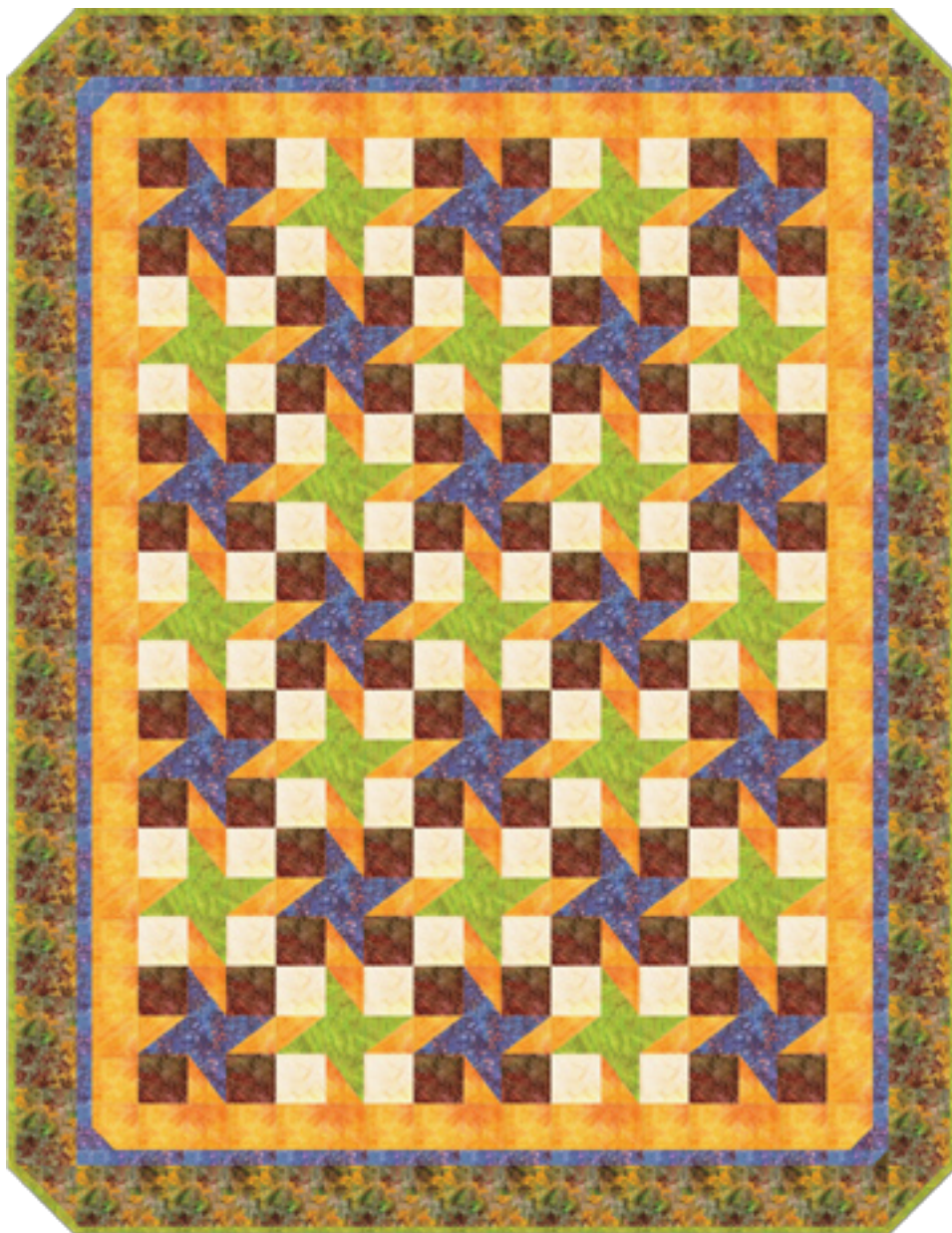


OKTOBERFEST

Designed by Toadusew Creative Concepts

ARTISAN BATIKS ^{by} Lunn STUDIOS

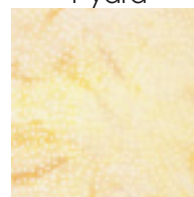
Approx. 62" x 80"



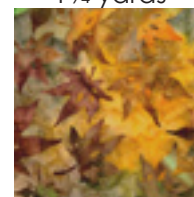
AMD-7010-6
Purple
1 yard



AMD-7201-38
Chartreuse
1 1/4 yards



AMD-7201-128
Daffodil
1 yard



AMD-7249-191
Autumn
1 1/4 yards



AMD-7201-129
Marigold
1 1/2 yards



AMD-7240-222
Redwood
1 yard

Oktoberfest will be featured in
McCall's Quick Quilts,
November 2008,
on sale September 2008.

Like its name this quilt embodies a festive spirit with spinning blocks that create a kaleidoscope of brilliant autumnal colors. This quilt was designed featuring exclusively Artisan Batiks by Lunn Studios. Kits for this quilt will be available from Toadusew starting September 2008. www.toadusew.com, info@toadusew.com, p. 850.499.4223
If you prefer to kit this project yourself, refer to the chart at the right.

artisan batiks by lunn studios
kitting guide - oktoberfest quilt pattern designed by toadusew creative concepts
as seen in mc call's quick quilts, november 2008

| pattern number | 1 kit ydg | bolts | 5 kits | bolts | 10 kits | bolts | 15 kits | bolts | 25 kits | bolts | 50 kits | bolts |
|----------------|-----------|-------|--------|-------|---------|-------|---------|-------|---------|-------|---------|-------|
| amd-7010-6 | 1 | 1 | 5 | 1 | 10 | 1 | 15 | 1 | 25 | 2 | 50 | 4 |
| amd-7240-222 | 1 | 1 | 5 | 1 | 10 | 1 | 15 | 1 | 25 | 2 | 50 | 4 |
| amd-7201-38 | 1 1/4 | 1 | 6 1/4 | 1 | 12 1/2 | 1 | 18 3/4 | 2 | 31 1/4 | 3 | 62 1/2 | 5 |
| amd-7201-128 | 1 | 1 | 5 | 1 | 10 | 1 | 15 | 1 | 25 | 2 | 50 | 4 |
| amd-7201-129 | 1 1/2 | 1 | 7 1/2 | 1 | 15 | 1 | 22 1/2 | 2 | 37 1/2 | 3 | 75 | 5 |
| amd-7249-191 | 1 1/4 | 1 | 6 1/4 | 1 | 12 1/2 | 1 | 18 3/4 | 2 | 31 1/4 | 3 | 62 1/2 | 5 |

bolt requirement based on 15 yd put-up



McCall's Quick Quilts

ROBERT KAUFMAN FABRICS