

MAKE YOUR MARK

Designed by Heather Jones
www.heatherjonesstudio.com

Featuring

color dash heather jones | studio



Finished quilt measures: 60-1/2" x 76-1/2"
Quilt shown in "SORBET" colorstory. For alternate colorstories see pages 6-8.

Pattern Level: Enthusiastic Novice

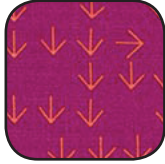

"I am a total beginner and want to learn more!"

ROBERT KAUFMAN
F A B R I C S

For questions about this pattern, please email Patterns@RobertKaufman.com.

Fabric and Supplies Needed

Fabric amounts based on yardage that is 42" wide.

Color	Fabric	Name/SKU	Yardage	Color	Fabric	Name/SKU	Yardage
	A	AHN-16264-351 CANDY PINK	1/2 yard		E	AHN-16261-363 CERISE	1/2 yard
	B	AHN-16263-349 NECTARINE	3/4 yard		F	CCCX-14115-62 INDIGO	1-3/4 yards*
	C	AHN-16262-351 CANDY PINK	3/4 yard	<p><i>*for 57" wide fabric. If using 42" wide fabric, you will need 2-1/4 yards.</i></p> <p>You will also need: 4 yards for backing 1/2 yard* binding <i>*for 57" wide fabric. If using 42" wide fabric, you will need 5/8 yards</i></p> <p>Copyright 2016, Robert Kaufman For individual use only - Not for resale</p>			
	D	AHN-16263-363 CERISE	3/4 yard				

Notes Before You Begin

- Read through all of the instructions before beginning.
- All of the seam allowances are 1/4" unless otherwise noted.
- Press seam allowances open unless otherwise noted.
- Width of fabric (WOF) is equal to at least 42" wide.
- Right sides together has been abbreviated to RST.
- Remember to measure twice and cut once!

Cutting Instructions

Tip: As you cut out the fabric for the pattern, keep all pattern pieces organized by labeling each stack with masking tape marked with the appropriate pattern piece name.

From Fabric A, cut:

one 4-1/2" x WOF strip. Subcut:

two 4-1/2" x 14-1/2" rectangles for K pieces

one 8 1/2" x WOF strip. Subcut:

one 8-1/2" x 18-1/2" rectangle for piece D

one 8-1/2" x 16-1/2" rectangle for piece O

From Fabric B, cut:

one 8-1/2" x WOF strip. Subcut:

one 8-1/2" x 18-1/2" rectangle for piece E

one 8-1/2" x 10-1/2" rectangle for piece N

one 10-1/2" x WOF strip. Subcut:

one 10-1/2" x 12-1/2" square for piece J

From Fabric C, cut:

two 6-1/2" x WOF strips. Subcut:

three 6-1/2" x 16-1/2" rectangles for piece F

From the remainder of the strip, cut

two 4-1/2" 10-1/2" rectangles for piece M

one 8 1/2" x WOF strip. Subcut:

one 8-1/2" x 14-1/2" rectangle for piece L

From Fabric D, cut:

one 10-1/2" x WOF strip. Subcut:

one 10-1/2" x 16-1/2" rectangle for piece G

one 6-1/2" x WOF strip. Subcut:

two 6-1/2" x 16-1/2" rectangles for the P pieces.

From Fabric E, cut:

two 6-1/2" x WOF strips. Subcut:

three 6-1/2" x 16-1/2" rectangles for the H pieces

From the remainder of the strip, cut

one 6-1/2" x 12-1/2" for piece I

From Fabric F (background fabric), cut:

one 60-1/2" x WOF. Subcut lengthwise into:

one 30-1/2" x 60-1/2" rectangle for piece A

three 6-1/2" x 60-1/2" rectangles: Keep one 6-1/2" x 60-1/2" rectangle for piece C. Trim the other two rectangles so that they each measure 6-1/2" x 40-1/2" for two B pieces.

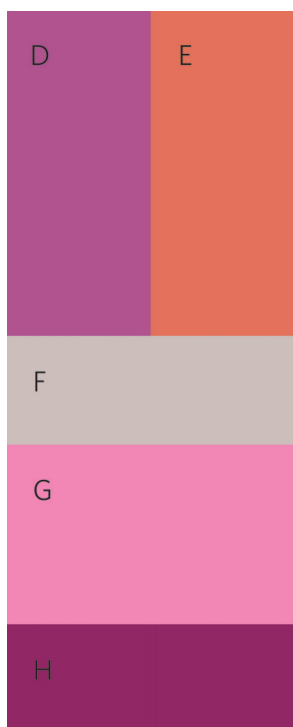
Note: If your background fabric is 42" wide, you will need 2-1/4 yards. Cut it into 60-1/2" x WOF piece, and then subcut that piece lengthwise into (1) 30-1/2" x 60-1/2" for piece A and (1) 6-1/2" x 60-1/2" for piece C. Then, cut (2) 6-1/2" x WOF strips. Trim each so that they both measure 6-1/2" x 40-1/2" for (2) B pieces.

From the Binding Fabric, cut:

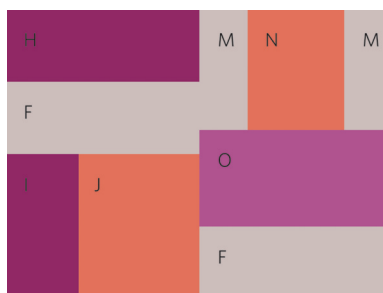
six 2-1/2" x WOF strips.

Note: If your binding fabric is 42" wide, you will need 5/8 yard. Cut (8) 2-1/2" x WOF strips for the binding.

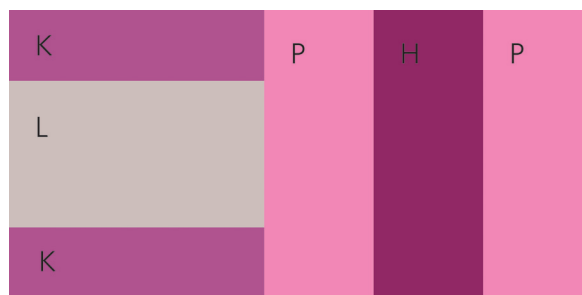
Construct the Quilt Top



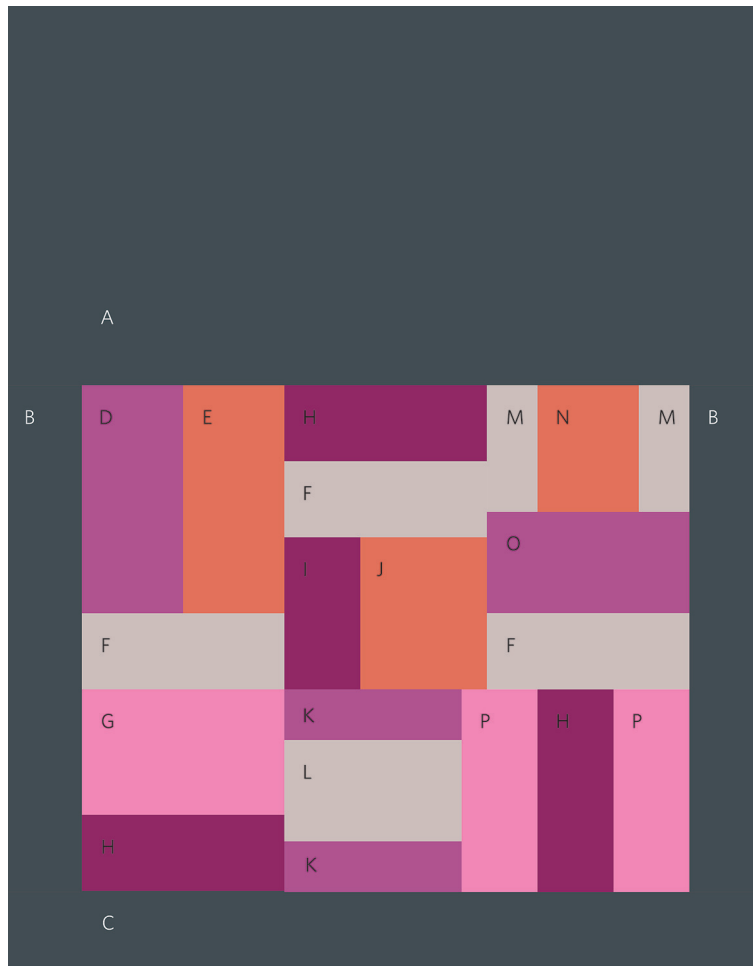
1. Sew piece D to piece E. Press seam to the side and set aside.
2. Sew piece F to piece G, right sides together. Press seam to the side. Then sew piece H to the bottom of piece G, and press seam to the side.
3. Sew the D/E pieced section to the F/G/H pieced section, following Diagram 1, to finish Section 1. Press seam to the side and set aside.



4. Sew piece H to piece F, right sides together. Press seam to the side and set aside.
5. Sew piece I to piece J, right sides together. Press seam to the side. Then, sew the H/F pieced section to the I/J pieced section. Press seam to the side and then set aside.
6. Sew one piece M to piece N, right sides together. Then sew the other piece M to piece N, press both seams to the side, and then set aside.
7. Sew piece O to piece F, right sides together. Press seam to the side, and then sew the M/N/M pieced section to the O/F pieced section. Press seam to the side.
8. Sew the H/F/I/J pieced section to the M/N/M/O/F pieced section, right sides together and following Diagram 2, to finish Section 2. Press seam to the side.



9. Sew one piece K to piece L, right sides together. Then sew the other piece K to piece L, and press both seams to the side, and set aside.
10. Sew one piece P to piece H, right sides together. Then sew the other piece P to piece H, and press both seams to the side.
11. Sew the K/L/K pieced section to the P/H/P section, right sides together and following Diagram 3, to finish Section 3. Press seam to the side.



12. Sew Section 2 to Section 3, following the quilt layout diagram. Press seam to the side.
13. Sew Section 1 to the pieced 2/3 section, following the quilt layout diagram. Press seam to the side.
14. Sew one B piece to the right side of the pieced section, and then sew the other B piece to the left side of the pieced section. Press both seams to the side towards the B pieces.
15. Sew piece A to the top of the pieced section. Press seam to the side towards A. Then sew piece C to the bottom of the pieced section to finish the quilt top. Press seam to the side towards C.







Your quilt top is complete! Baste, quilt, bind and enjoy!

MAKE YOUR MARK - Harvest Colorstory

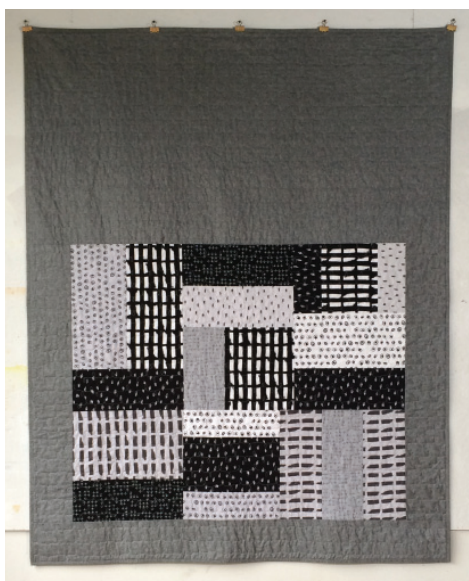


Fabric and Supplies Needed

Fabric amounts based on yardage that is 42" wide.

Color	Fabric	Name/SKU	Yardage	Color	Fabric	Name/SKU	Yardage
	A	AHN-16264-7 GREEN	1/2 yard		E	AHN-16261-291 CURRY	1/2 yard
	B	AHN-16263-366 ICE FRAPPE	3/4 yard		F	E014-308 LINEN	2-1/4 yards**
	C	AHN-16262-292 MERINGUE	3/4 yard	<p><i>**follow instructions for background cutting with 42" wide fabric</i></p> <p>You will also need: 4 yards for backing 1/2 yard binding</p> <p>Copyright 2016, Robert Kaufman For individual use only - Not for resale</p>			
	D	AHN-16263-291 CURRY	3/4 yard				

MAKE YOUR MARK - Shadow Colorstory



Follow "Alternate Cutting Instructions for Shadow Colorstory" on page 8.

Fabric and Supplies Needed

Fabric amounts based on yardage that is 42" wide.

Color	Fabric	Name/SKU	Yardage	Color	Fabric	Name/SKU	Yardage
	A	AHN-16264-304 SHADOW	1/4 yard		F	AHN-16262-2 BLACK	1/2 yard
	B	AHN-16263-2 BLACK	3/4 yard		G	AHN-16261-295 IRON	1/4 yard
	C	AHN-16264-1 WHITE	1/4 yard		H	AHN-16261-2 BLACK	1/4 yard
	D	AHN-16263-304 SHADOW	1/2 yard		I	E064-1019 BLACK	2-1/4 yards
	E	AHN-16262-186 SILVER	1/4 yard	<p>You will also need: 4 yards for backing 1/2 yard binding</p> <p>Copyright 2016, Robert Kaufman For individual use only - Not for resale</p>			

Alternate Cutting Instructions for Shadow Colorstory

Tip: As you cut out the fabric for the pattern, keep all pattern pieces organized by labeling each stack with masking tape marked with the appropriate pattern piece name.

For Fabrics B, D and the background and binding fabrics, cut following the directions on pages 2-3 for the other colorstories.

From Fabric A, cut:

one 8 ½" x WOF strip. Subcut:

one 4 ½" x 14 ½" rectangle for one piece K

From the remainder of the strip, cut:

one 8 ½" x 18 ½" rectangle for piece D

From Fabric C, cut:

one 8 ½" x WOF strip. Subcut:

one 8 ½" x 16 ½" rectangle for piece O

From the remainder of the strip, cut:

one 4 ½" x 14 ½" rectangle for one piece K

From Fabric E, cut:

one 6 ½" x WOF strip. Subcut:

one 6 ½" x 16 ½" rectangle for piece F

From the remainder of the strip, cut

one 4 ½" 10 ½" rectangle for one piece M

From Fabric F, cut:

one 6 ½" x WOF strip. Subcut:

two 6 ½" x 16 ½" rectangles for two F pieces

one 8 ½" x WOF strip. Subcut:

one 8 ½" x 14 ½" rectangle for piece L

From Fabric G, cut:

one 6 ½" x WOF strip. Subcut:

one 6 ½" x 16 ½" rectangles for one H piece

From the remainder of the strip, cut

one 6 ½" x 12 ½" for piece I

From Fabric H, cut:

one 6 ½" x WOF strip. Subcut:

two 6 ½" x 16 ½" rectangles for two H pieces