

Sandwich Sack

Designed by Chickenjulie for Robert Kaufman
chickenjulie.blogspot.com

Featuring
Let's Do Lunch





Finished project measures 8-1/2" x 5-1/2" x 3"

Pattern Level: Confident Beginner

*"I have basic block construction down
and would like to learn a new trick!"*

ROBERT KAUFMAN
F A B R I C S

Fabric and Supplies Needed

Color	Fabric	Name/SKU	Yardage	Color	Fabric	Name/SKU	Yardage
	A	AMZ-15105-2 BLACK	1/2 yard	<p>You will also need:</p> <ul style="list-style-type: none">1/2 yd Thermoweb Heat'n Bond Iron-On Vinyl, or any other brand of clear iron-on vinyl.1/2 yd light to medium weight iron-on interfacing.2" piece of elastic cordOne 1" or larger button			
	B	K001-1019 BLACK	1/2 yard				

Notes Before You Begin

- Please read through all of the instructions before beginning.
- All of the seam allowances are 1/2" unless otherwise noted.
- Press all seam allowances open after each seam is sewn, unless otherwise noted.
- Remember to measure twice and cut once!

Cutting Instructions

Fabric A, Fabric B, Vinyl and Interfacing

From each fabric:

- Cut two rectangles 6-1/2" x 11-1/2" for Front and Back.
- Cut two rectangles 4-1/2" x 11-1/2" for Sides.
- Cut one rectangles 4-1/2" x 6-1/2" for Bottom.

Also from Interfacing

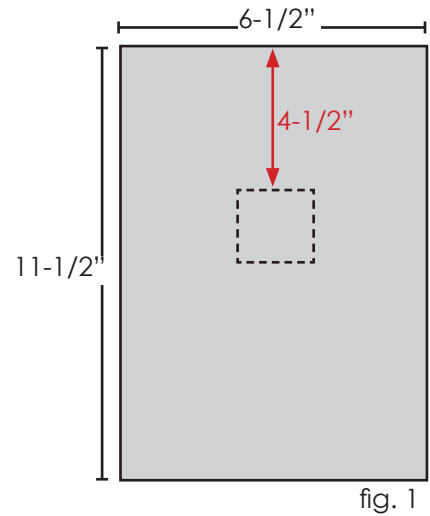
- Cut one square 1" x 1"

Assembly Instructions

Prepare the Pieces

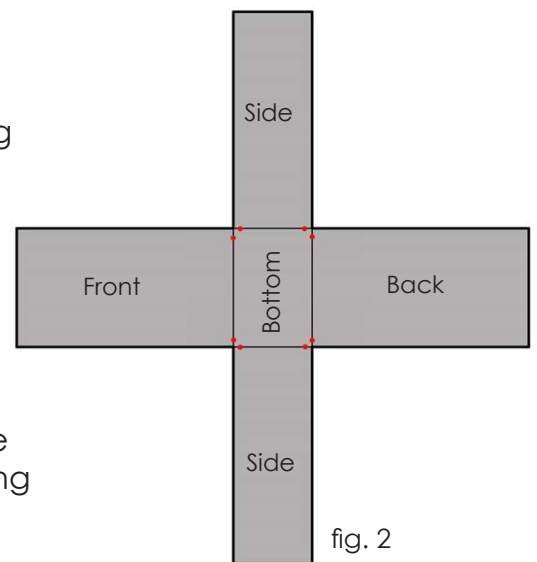
1. Following the manufacturer's instructions, iron the vinyl to the right side of the Exterior Bag (Fabric A) pieces (Front, Back, Bottom and two Sides).
2. Following the manufacturer's instructions, iron the interfacing to the wrong side of the Lining (Fabric B) pieces (Front, Back, Bottom and two Sides).

3. Iron-on the 1" square of interfacing onto the wrong side of the Exterior Bag Front 4-1/2" down from the top edge and centered horizontally (this will give you two layers of interfacing on that spot) (fig. 1).
4. Sew the button the right side of the Exterior Bag Front, centered on the 1" interfacing square.



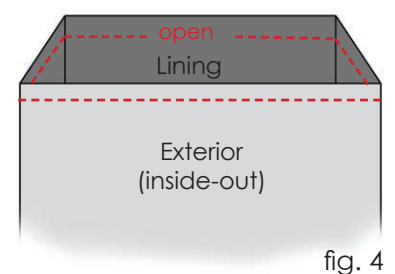
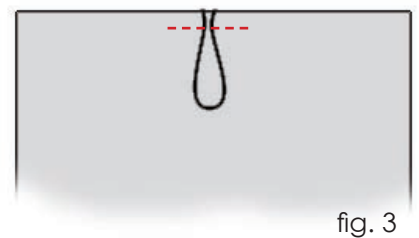
Assemble the Exterior and Lining

1. Sew the Exterior Front and Back pieces to the Exterior Bottom with right side together. Do not sew edge to edge - instead, start and stop 1/4" from the edge, making sure to backstitch each time you start and stop (fig. 2)
2. Sew the Sides to the Bottom, starting and stopping 1/4" away from the edges and backstitching (fig 2).
3. Sew the Sides to the Exterior Front and Back. Start at the bottom, matching the long side of a Front to the long side of the Side next to it, right sides together, making sure to NOT catch the Exterior Bottom. Repeat for the remaining three seams.
4. Set the finished exterior aside and repeat steps 1-3 with the lining pieces.



Finishing

1. Mark the top center of the Exterior Back . Fold your elastic into a loop and pin it to the right side of the center Exterior Back, raw edges aligned. Stay-stitch the elastic to the Exterior Back using a 3/8" seam allowance (fig. 3)
2. With both pieces assembled, turn Exterior inside out and Lining right side out. Nestle lining into Exterior, right sides together. Sew around the top using a 1/2" seam allowance. Leave an opening approximately 3" long so that you can turn the bag right side out (fig. 4).



3. Turn the bag right side out through the opening and fold the seam allowance of the 3" opening inward. Topstitch the top edge of the bag using a 1/8" seam, sewing the 3" opening closed as you sew.
4. Align top corners (left front and back, right front and back) pushing sides inward. Pinch center of each side together and secure the crease with a few small stitches (fig. 5).

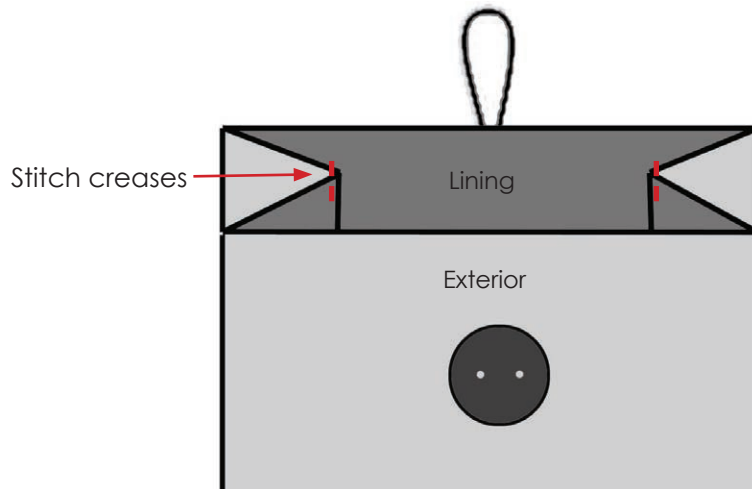


fig. 5

Your Sandwich Sack is complete!