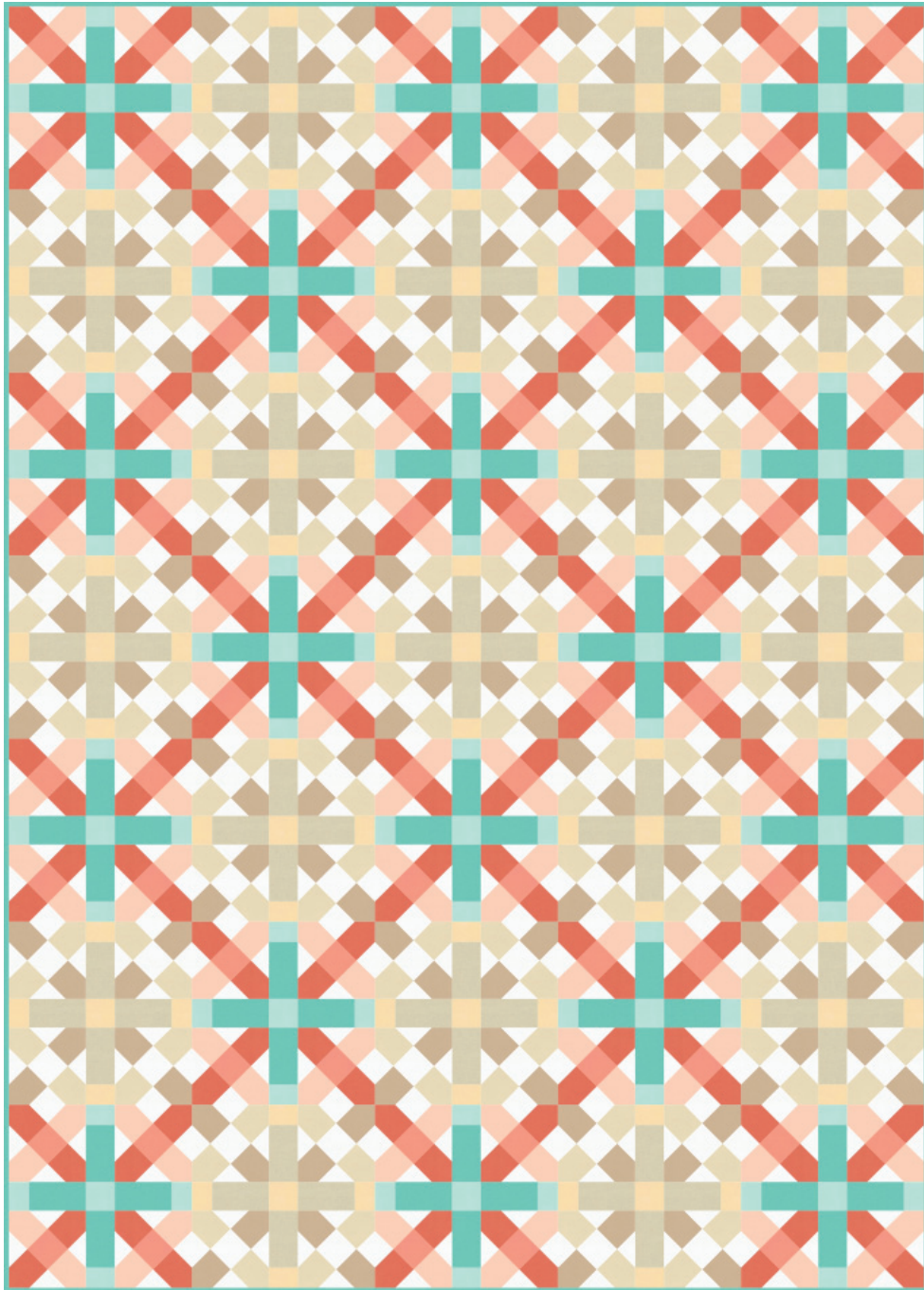


LATTICE

Designed by Robert Kaufman Fabrics
www.robertkaufman.com

Featuring **KONA**[®]
cotton solids



Finished quilt measures: 60" x 84"



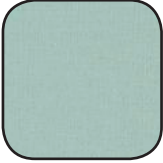





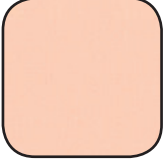

Pattern Level: Experienced Intermediate

"I know the ropes and would like to test my skills!"

ROBERTKAUFMAN
F A B R I C S

Fabric and Supplies Needed

Fabric amounts based on yardage that is 40" wide.

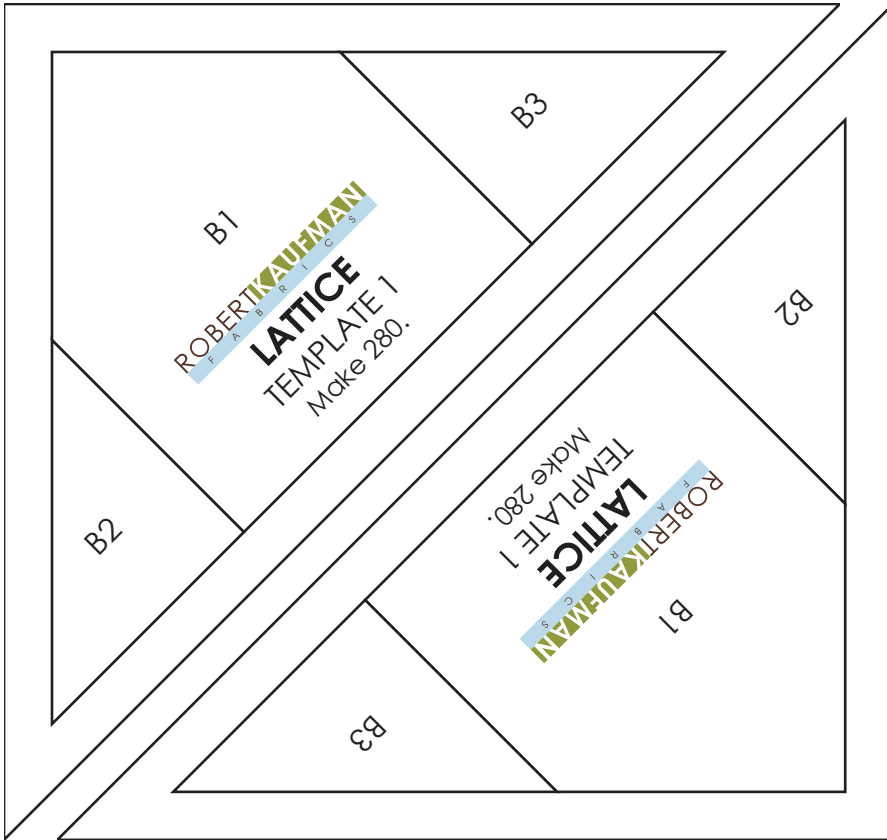
Color	Fabric	Name/SKU	Yardage	Color	Fabric	Name/SKU	Yardage
	A	K001-1321 SAGE	2/3 yard		F	K001-1387 WHITE	2 yards
	B	K001-1328 SEAFOAM	1/2 yard		G	K001-1187 KHAKI	2/3 yard
	C	K001-185 CREAMSICLE	1/2 yard		H	K001-1306 RAFFIA	1 yard
	D	K001-1483 SALMON	1 yard		I	K001-1323 SAND	1 yard
	E	K001-1176 ICE PEACH	1 yard		J	K001-1090 CREAM	1/2 yard
Copyright 2016, Robert Kaufman For individual use only - Not for resale				You will also need: 5-1/2 yards for backing 5/8 yards for binding			

Notes Before You Begin

- Read through all of the instructions before beginning.
- All of the seam allowances are 1/4" unless otherwise noted.
- Press seam allowances open unless otherwise noted.
- Width of fabric (WOF) is equal to at least 40" wide.
- Right sides together has been abbreviated to RST.
- Remember to measure twice and cut once!

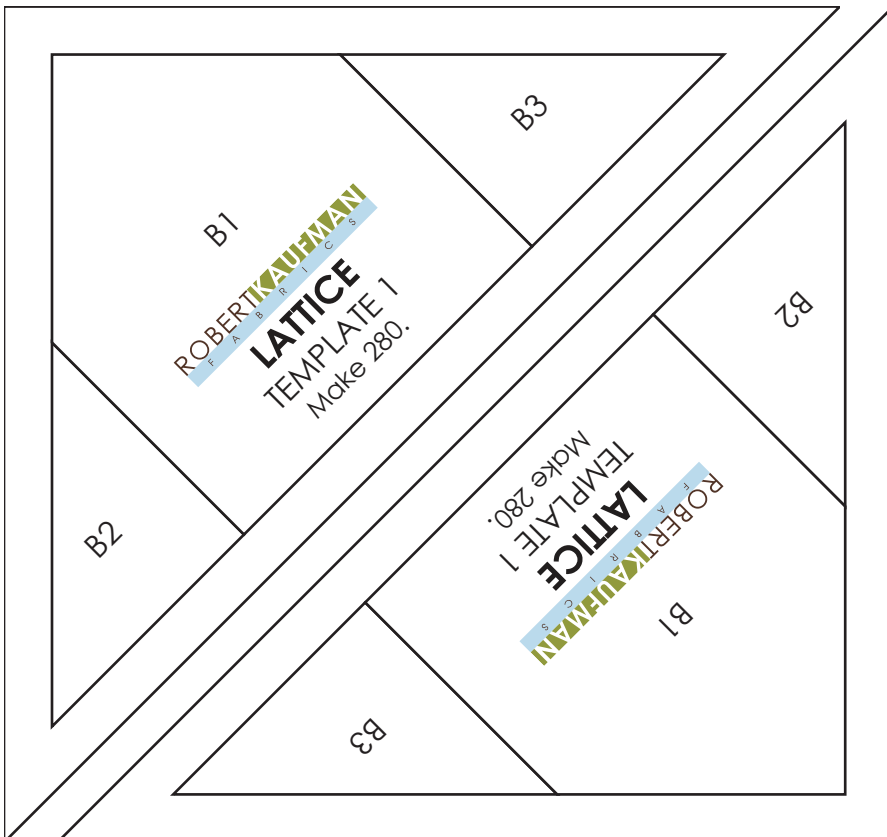
Templates

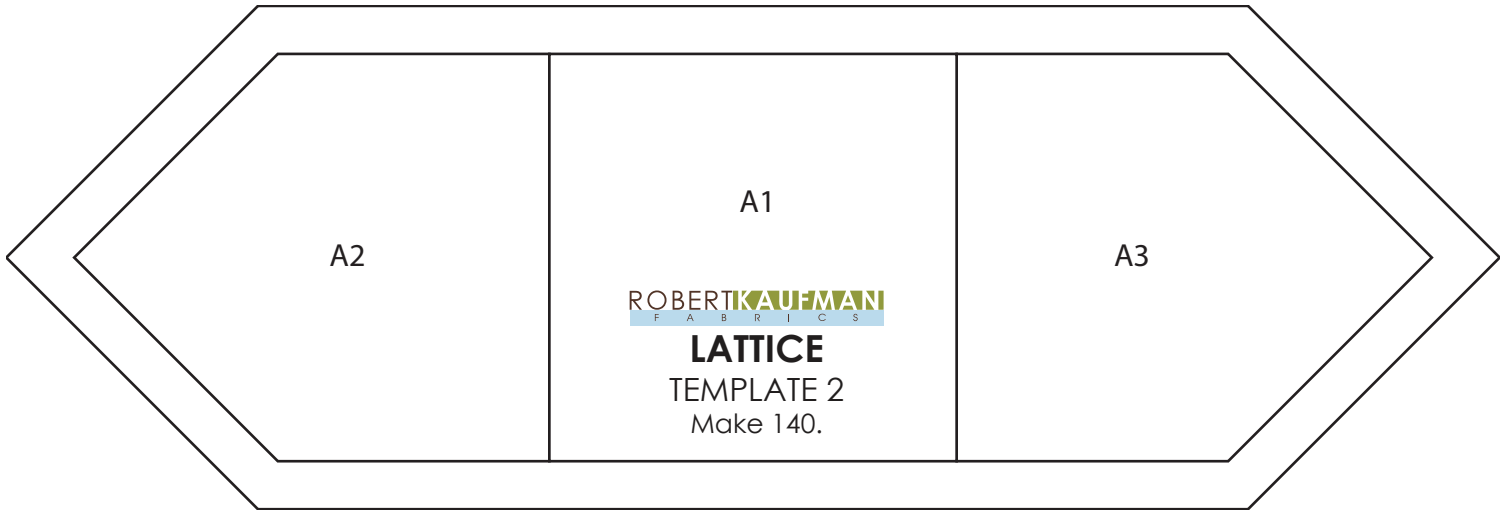
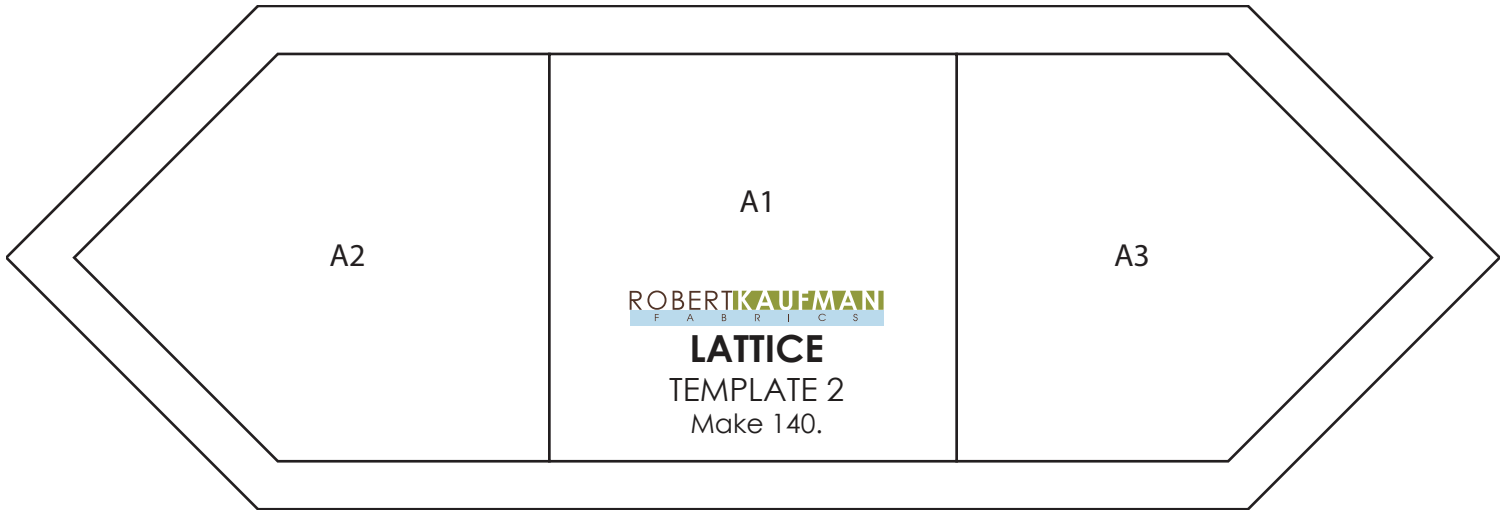
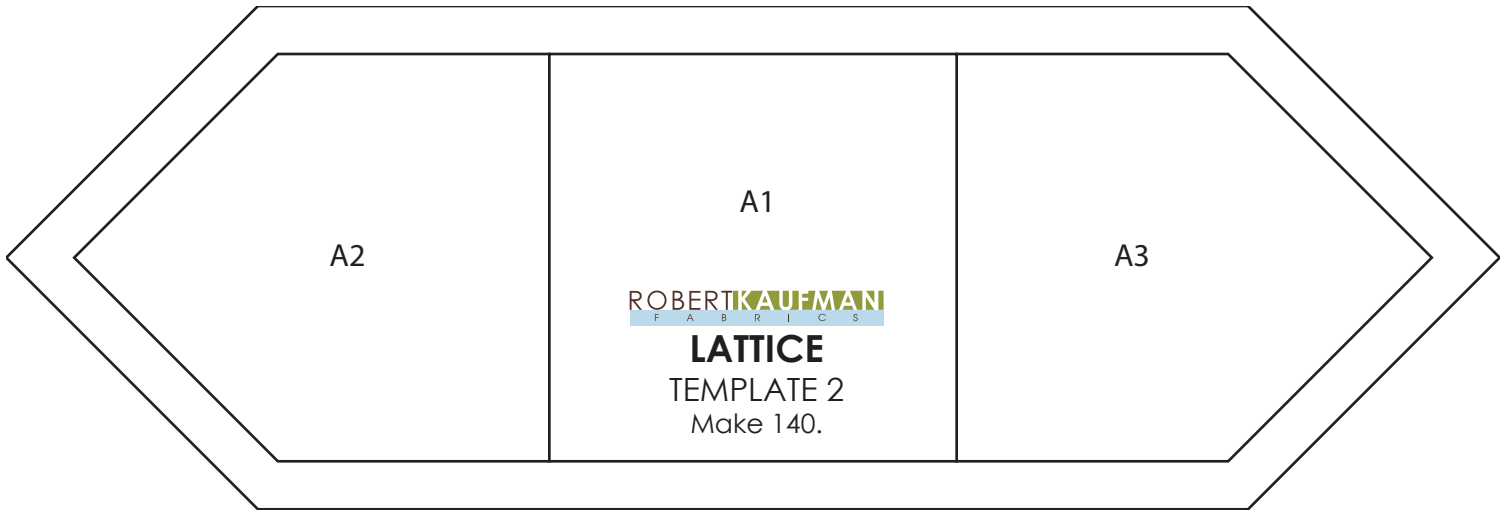
Prepare two hundred eighty copies of Template 1. Print 70 copies of page 3.
Prepare one hundred forty copies of Template 2. Print 47 copies of page 4.
Ensure that the 1" test square measures 1".



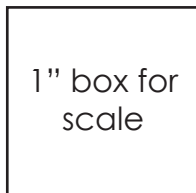
Print 70 copies of this page to create 280 Template 1 triangles.

1" box for scale





Print 47 copies of this page to create 140 Template 2 pieces.



Cutting Instructions

From Fabric A, cut:

eight 2-1/2" x WOF strips. Subcut:
- seventy-two 2-1/2" x 4" rectangles

From Fabric B, cut:

five 2-1/2" x WOF strips. Subcut:
- seventy-two 2-1/2" x 2" rectangles
- eighteen 2-1/2" x 2-1/2" squares

From Fabric C, cut:

six 2-3/4" x WOF strips. Subcut:
- seventy-two 2-3/4" squares for paper piecing the A Blocks, section A1

From Fabric D, cut:

twelve 2-3/4" x WOF strips. Subcut:
- one hundred forty-four 2-3/4" x 3-1/4" rectangles for paper piecing the A Blocks, section B1

From Fabric E, cut:

twelve 2-3/4" x WOF strips. Subcut:
- one hundred forty-four 2-3/4" x 3-1/4" rectangles for paper piecing the A Blocks, section A2 and A3

From Fabric F, cut:

eighteen 2-1/2" x WOF strips. Subcut:
- two hundred eighty 2-1/2" squares for paper piecing all blocks, sections B2 and B3.
Cut each square in half once along a diagonal, creating five hundred sixty triangles.
five 2-3/4" x WOF strips. Subcut:
- sixty-eight 2-3/4" squares for paper piecing the B Blocks, section A1

From Fabric G, cut:

eight 2-1/2" x WOF strips. Subcut:
- sixty-eight 2-1/2" x 4" rectangles

From Fabric H, cut:

twelve 2-3/4" x WOF strips. Subcut:
- one hundred thirty-six 2-3/4" x 3-1/4" rectangles for paper piecing the B Blocks, section A2 and A3

From Fabric I, cut:

twelve 2-3/4" x WOF strips. Subcut:
- one hundred thirty-six 2-3/4" x 3-1/4" rectangles for paper piecing the B Blocks, section B1

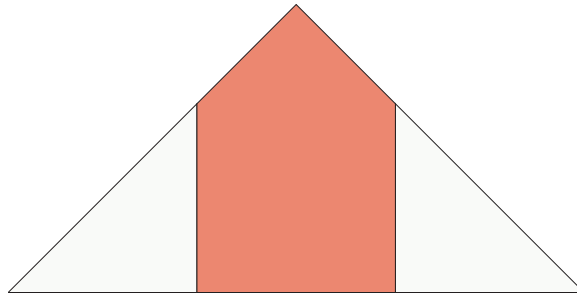
From Fabric J, cut:

five 2-1/2" x WOF strips. Subcut:
- sixty-eight 2-1/2" x 2" rectangles
- seventeen 2-1/2" x 2-1/2" squares

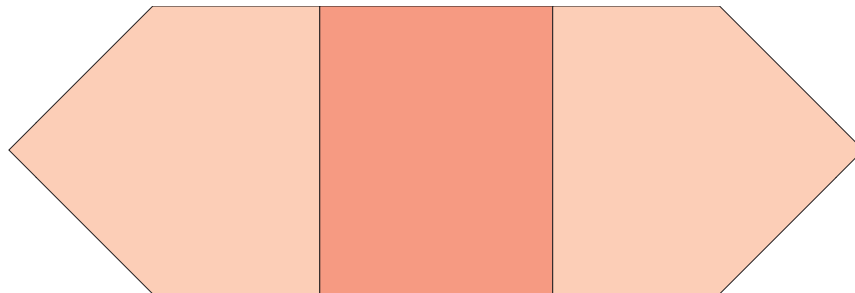
From the binding fabric, cut:
eight 2-1/2" x WOF strips

Assembling the A Blocks

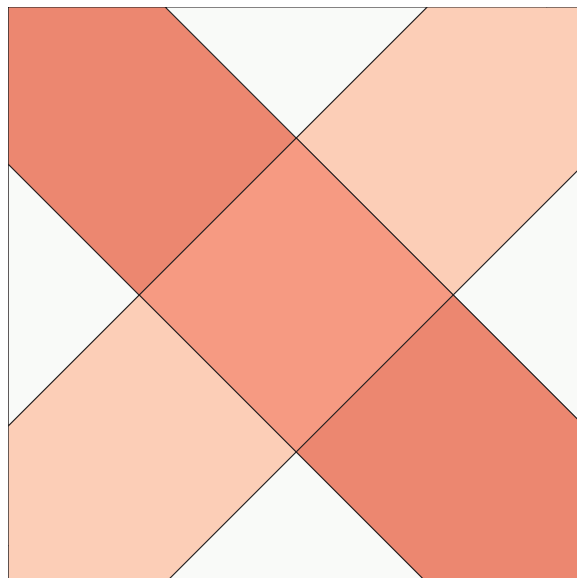
Gather Fabric D and the Fabric F triangles. Using one hundred forty-four of the Template 1 copies, paper piece the block by placing Fabric D in the B1 position and Fabric F in the B2 and B3 positions, trimming seam allowances to 1/4" as needed. Trim to the size of the paper piecing template to complete and set aside. Repeat to make one hundred forty-four. Remaining Fabric F triangles will be used in the B Blocks.



Gather Fabrics C and E. Using half of the Template 2 copies, paper piece the block by placing Fabric C in the A1 position and Fabric E in the A2 and A3 positions, trimming seam allowances to 1/4" as needed. Trim to the size of the paper piecing template to complete and set aside. Repeat to make seventy-two.



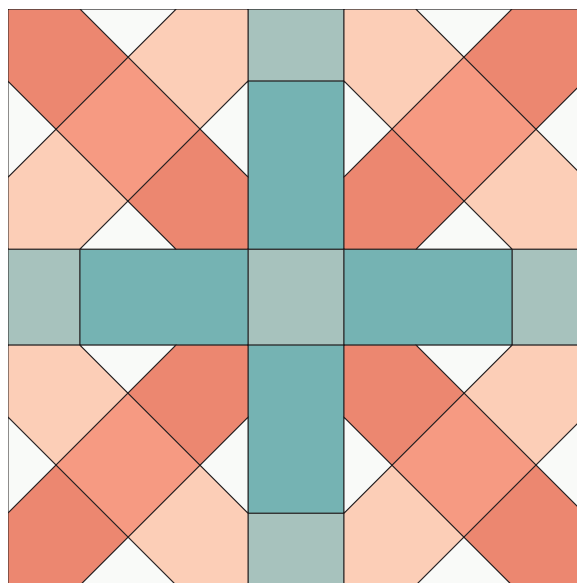
Join two Template 1 units and one Template 2 unit, matching the seams. Press the seam allowance open. Remove the template paper. Resulting cross block unit should measure 5-1/2" x 5-1/2" square. Repeat to make seventy-two.



Sew a 2-1/2" x 2" Fabric B piece to a Fabric A rectangle. Press toward Fabric B piece. Repeat to make seventy-two.

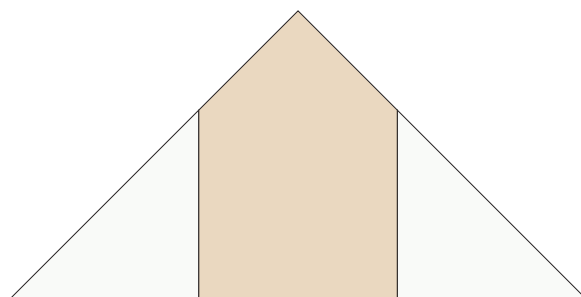


Using the 2-1/2" Fabric B squares, join the above units in three rows of three. Press seams away from the paper pieced sections. The A Block should measure 12-1/2" square. Repeat to make eighteen of Block A.

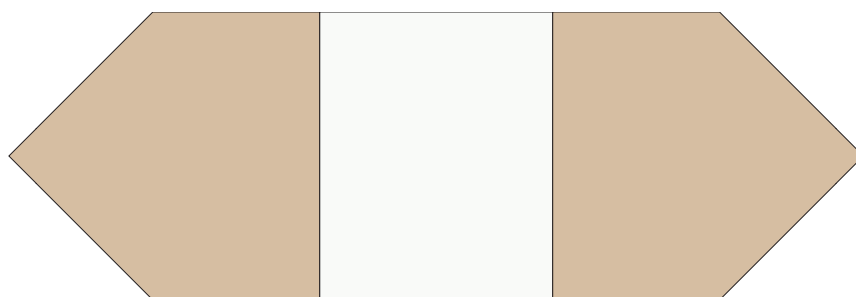


Assembling the B Blocks

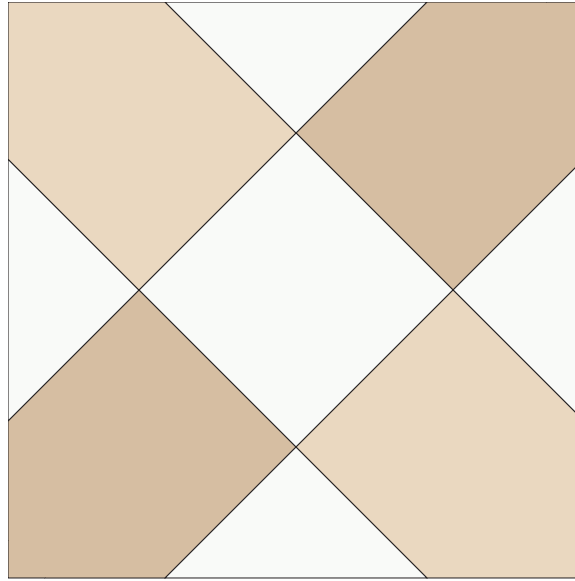
Gather Fabric I and the remaining Fabric F triangles. Using the remaining Template 1 copies, paper piece the block by placing Fabric I in the B1 position and Fabric F in the B2 and B3 positions, trimming seam allowances to 1/4" as needed. Trim to the size of the paper piecing template to complete and set aside. Repeat to make one hundred thirty-six.



Gather Fabrics F and H. Using half of the Template 2 copies, paper piece the block by placing Fabric F in the A1 position and Fabric H in the A2 and A3 positions, trimming seam allowances to 1/4" as needed. Trim to the size of the paper piecing template to complete and set aside. Repeat to make sixty-eight.



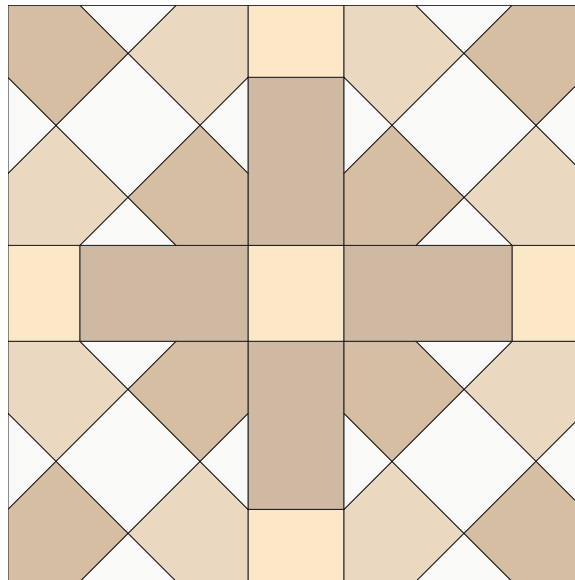
Join two Template 1 units and one Template 2 unit, matching the seams. Press the seam allowance open. Remove the template paper. Resulting cross block unit should measure 5-1/2" x 5-1/2" square. Repeat to make sixty-eight.



Sew a 2-1/2" x 2" Fabric J piece to a Fabric G rectangle. Press toward Fabric J piece. Repeat to make sixty-eight.

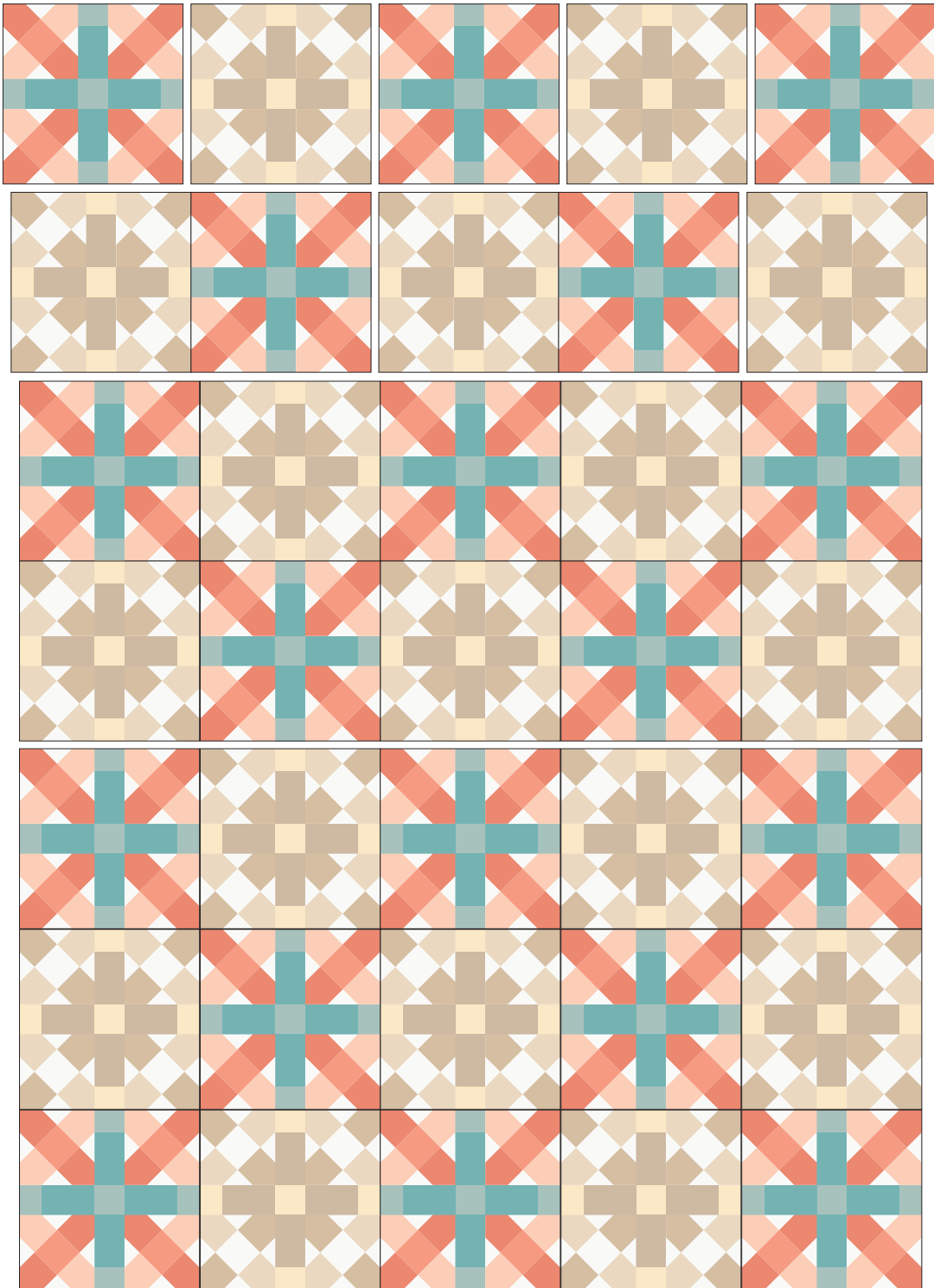


Using the 2-1/2" Fabric J squares, join the above units in three rows of three, noting the orientation of the cross blocks. Press seams away from the paper pieced sections. The B Block should measure 12-1/2" square. Repeat to make seventeen of Block B.



Assembling the Quilt

Arrange the blocks in a layout of seven rows of five blocks each, alternating the Block As and Bs, following the Quilt Assembly Diagram.



Press seams in the odd numbered rows to the left and seam in the even numbered rows to the right.

Press the row seams open.

Your quilt top is complete! Baste, quilt, bind and enjoy!