

# INTO THE WOODS

Designed by Robert Kaufman Fabrics    Featuring Woodland Hideaway  
[www.robertkaufman.com](http://www.robertkaufman.com)



Finished quilt measures: 60" x 80"

Quilt shown in "AQUA" colorstory. For alternate "IVORY" colorstory see page 8.

**Pattern Level: Experienced Intermediate**

***"I know the ropes and would like to test my skills!"***

**ROBERTKAUFMAN**  
F A B R I C S

*For questions about this pattern, please email [Patterns@RobertKaufman.com](mailto:Patterns@RobertKaufman.com).*

## Fabric and Supplies Needed

*Fabric amounts based on yardage that is 42" wide.*

Color	Fabric	Name/SKU	Yardage	Color	Fabric	Name/SKU	Yardage
	A	ARHF-17070-70 AQUA	2/3 yard (one full panel)		E	ARHF-17074-70 AQUA	1-1/3 yard
	B	ARHF-17074-8 ORANGE	7/8 yard		F	ARHF-17071-70 AQUA	1-1/2 yard
	C	ARHF-17073-70 AQUA	2/3 yard		Binding*	ARHF-17074-8 ORANGE <i>*Also used for Fabric B</i>	5/8 yards
	D	ARHF-17072-5 YELLOW	2/3 yard	You will also need: 5 yards for backing			

Copyright 2017, Robert Kaufman  
For individual use only - Not for resale

## Notes Before You Begin

- Read through all of the instructions before beginning.
- All of the seam allowances are 1/4" unless otherwise noted.
- Press seam allowances open unless otherwise noted.
- Width of fabric (WOF) is equal to at least 42" wide.
- Right sides together has been abbreviated to RST.
- Remember to measure twice and cut once!

## Cutting Instructions

### From Fabric A, fussy cut:

one 22-1/2" x 42-1/2" center panel

### From Fabric B, cut:

five 3" x WOF strips. Subcut:

sixty-four 3" squares

two 3-1/2" x WOF strips. Subcut:

two 3-1/2" x 22-1/2" top and bottom inner borders

three 1-1/2" x WOF strips. Sew together, end-to-end, then trim to yield:

two 1-1/2" x 48-1/2" side inner borders

### From Fabric C, cut:

three 7" x WOF strips. Subcut:

sixteen 7" squares for the A Block HSTs

### From Fabric D, cut:

three 7" x WOF strips. Subcut:

sixteen 7" squares for the B Block HSTs

### From Fabric E, cut:

six 7" x WOF strips. Subcut:

thirty-two 7" squares for the A and B Block HSTs

### From Fabric F, cut:

three 4-1/2" x WOF strips. Sew together, end-to-end, then trim to yield:

two 4-1/2" x 48-1/2" top and bottom inner borders

five 6-1/2" x length of fabric strips from the remaining yardage. Sew together, end-to-end, then trim to yield:

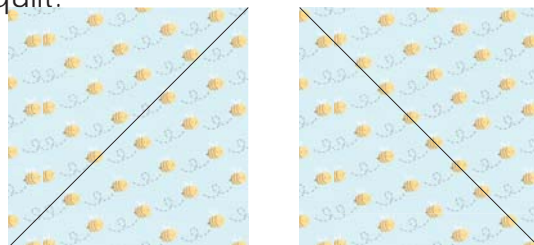
two 6-1/2" x 80-1/2" side inner borders

### From the Binding Fabric, cut:

eight 2-1/2" x WOF strips

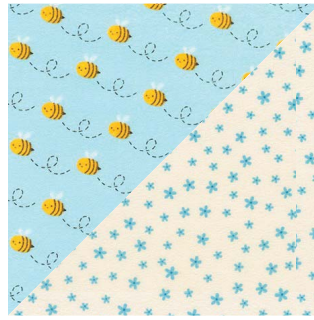
## Assemble the Blocks

**Step 1:** Divide the Fabric C squares into two stacks of eight squares, each. With the fabric direction in the correct orientation, mark a diagonal line on the wrong side of each square, marking from top left to bottom right on one half (eight squares) and from top right to bottom left for the remaining half of the squares. This helps the directional fabric face the correct direction in the final quilt.



Repeat for the Fabric D squares.

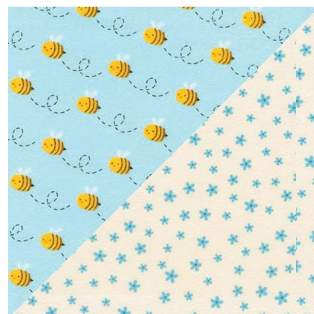
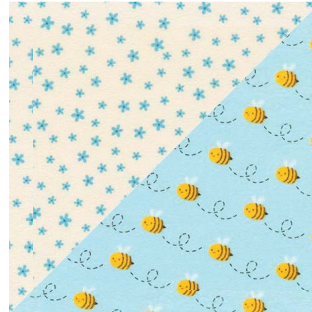
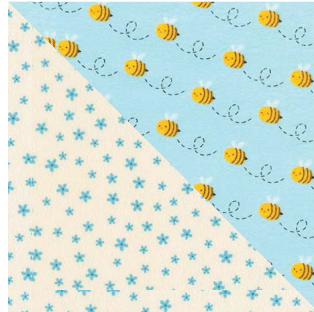
**Step 2:** Pair a Fabric C square with a Fabric E square, RST. Sew 1/4" away from both sides of the marked line. Cut on the marked line, creating two half-square triangles (HSTs). Press toward the darker fabric. Trim to 6-1/2" square. Repeat to make a total of thirty-two C/E HSTs. These are for the A Blocks.



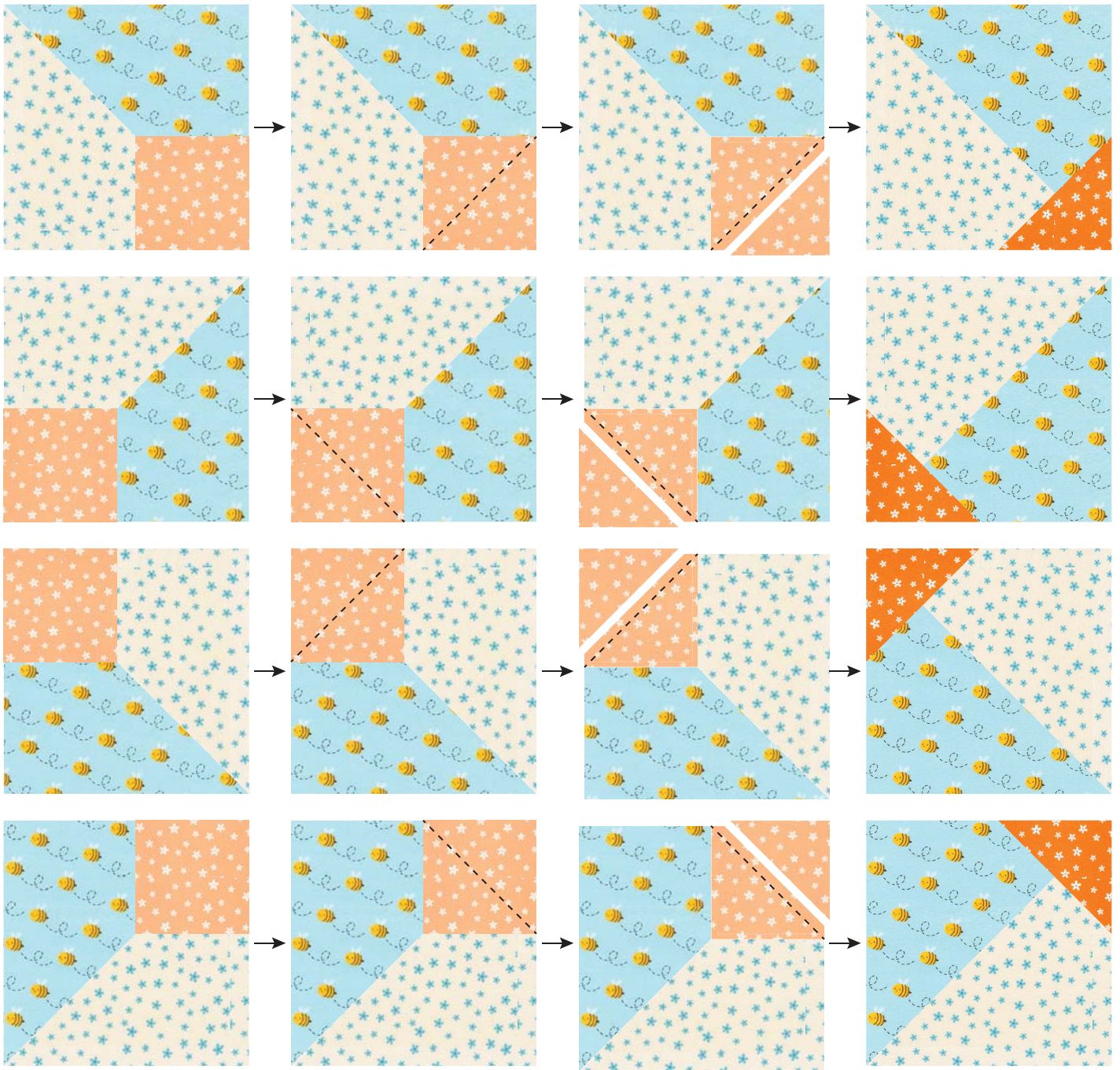
**Step 3:** Repeat Step 2 with the Fabric D and E squares. These are for the B Blocks.



**Step 4:** Select one of each type of C/E HST orientation, as shown, and arrange to form the A Block.

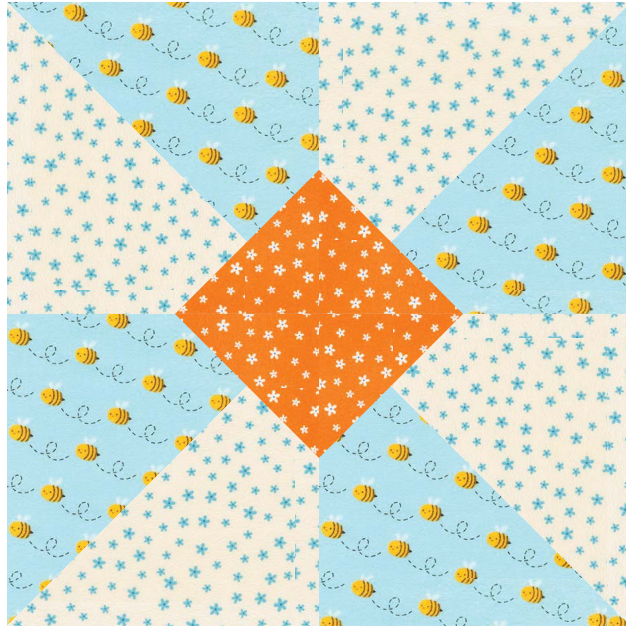


**Step 5:** Place one 3" Fabric B square in the corners, as indicated. Sew from corner to corner, along the diagonal and perpendicular to the seam in the HST. Trim the excess, leaving a 1/4" seam allowance. Press toward the corner of the HST.



Repeat for the remaining three HSTs in the block, carefully checking the orientation of the fabrics and the placement of the Fabric B squares.

**Step 6:** Sew the four HSTs together to form one A Block. Press the seams to the left in the top row and to the right in the bottom row. Sew the two rows together, nesting the seams and pressing the seam open or to one side. The resulting A Block should measure 12-1/2" square. Repeat to make a total of eight A Blocks and eight B Blocks.



*A Block*



*B Block*

## Assemble the Quilt



**Step 7:** Sew the Fabric B top and bottom inner borders to the Fabric A center panel. Press toward the borders. Sew the Fabric B side inner borders to the sides of the quilt center. Press toward the borders.

**Step 8:** Gather two A Blocks and two B Blocks. Sew together, alternating A-B-A-B, noting the orientation so that the animals are facing the right direction, to complete one column of side blocks. Repeat to make the second side column, but use the order B-A-B-A. Sew to the left and right edges of the quilt center, referring to the Quilt Assembly Diagram for proper placement.

**Step 9:** Gather two A Blocks and two B Blocks. Sew together, alternating A-B-A-B, noting the orientation so that the animals are facing the right direction, to complete the top row of blocks. Repeat to make the bottom row, but use the order B-A-B-A. Sew to the top and bottom of the quilt center, referring to the Quilt Assembly Diagram for proper placement.

**Step 10:** Sew the Fabric F top and bottom outer borders to the quilt center. Press toward the borders. Sew the Fabric F side outer borders to the sides of the quilt center. Press toward the borders.

Your quilt top is now complete. Baste, quilt, bind and enjoy!

# INTO THE WOODS - Ivory Colorstory



## Fabric and Supplies Needed

*Fabric amounts based on yardage that is 42" wide.*

Color	Fabric	Name/SKU	Yardage	Color	Fabric	Name/SKU	Yardage
	A	ARHF-17070-15 IVORY	2/3 yard (one full panel)		E	ARHF-17074-213 TEAL	1-1/3 yard
	B	ARHF-17074-16 BROWN	7/8 yard		F	ARHF-17071-15 IVORY	1-1/2 yard
	C	ARHF-17072-70 AQUA	2/3 yard		Binding*	ARHF-17074-16 BROWN <i>*Also used for Fabric B</i>	5/8 yards
	D	ARHF-17073-15 IVORY	2/3 yard	You will also need: 5 yards for backing			

Copyright 2017, Robert Kaufman  
For individual use only - Not for resale